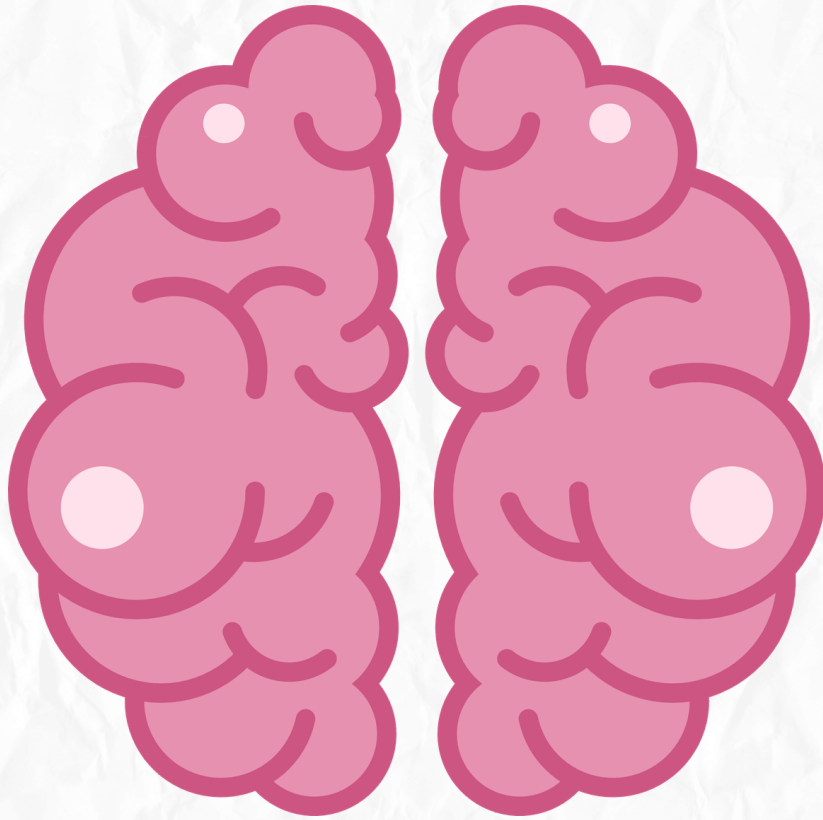


Neuroanatomy

Quiz time



Cerebral White Matter

Lec18



1. Which type of fibers connect different parts of the cerebral cortex within the same hemisphere?

- A) Projection fibers
- B) Commissural fibers
- C) Association fibers
- D) Corona radiata

Answer: C) Association fibers

2. The "Internal Capsule" is a major example of which type of white matter fibers?

- A) Short association fibers
- B) Projection fibers
- C) Commissural fibers
- D) Long association fibers

Answer: B) Projection fibers

3. The largest commissure of the brain, connecting the two cerebral hemispheres, is the:

- A) Anterior commissure
- B) Fornix
- C) Corpus callosum
- D) Posterior commissure

Answer: C) Corpus callosum

4. Which part of the internal capsule lies between the head of the caudate nucleus and the lentiform nucleus?

- A) Posterior limb
- B) Genu
- C) Anterior limb
- D) Retrolentiform part

Answer: C) Anterior limb

5. The "Genu" of the internal capsule contains which specific fibers?

- A) Corticospinal fibers
- B) Corticonuclear fibers
- C) Optic radiation
- D) Auditory radiation

Answer: B) Corticonuclear fibers

6. Which structure connects the hippocampus of one side with the hippocampus of the other side?

- A) Habenular commissure
- B) Commissure of the fornix
- C) Anterior commissure
- D) Corpus callosum

Answer: B) Commissure of the fornix

7. The "Optic Radiation" is found in which part of the internal capsule?

- A) Anterior limb
- B) Genu
- C) Retrolentiform part
- D) Sublentiform part

Answer: C) Retrolentiform part

8. Which association fibers connect the Broca's area in the frontal lobe with the Wernicke's area in the temporal lobe?

- A) Superior longitudinal fasciculus (Arcuate fasciculus)
- B) Uncinate fasciculus
- C) Cingulum
- D) Inferior longitudinal fasciculus

Answer: A) Superior longitudinal fasciculus (Arcuate fasciculus)

9. The fibers of the "Corona Radiata" converge to form which structure?

- A) Corpus callosum
- B) Internal capsule
- C) External capsule
- D) Anterior commissure

Answer: B) Internal capsule

10. Which part of the corpus callosum is the most posterior and thickest part?

- A) Genu
- B) Body
- C) Splenium
- D) Rostrum

Answer: C) Splenium