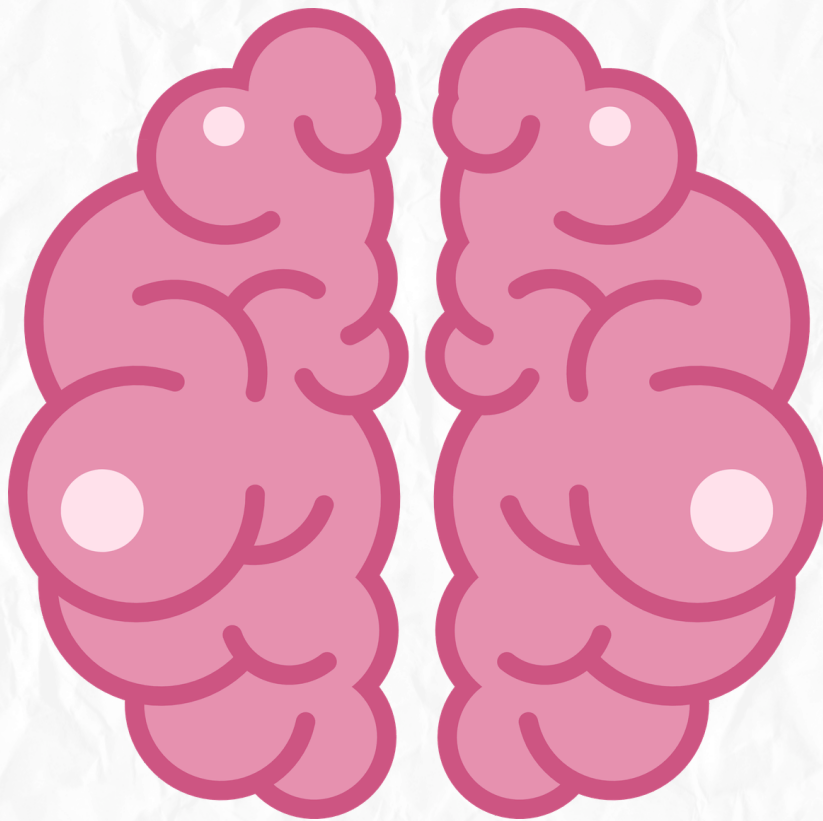


# Neuroanatomy

Quiz time



CEREBRAL  
HEMISPHERES Cerebral  
cortex Sulci and  
Gyri  
Lec16



1. The deep median cleft that partially separates the two cerebral hemispheres is called the:

- A) Transverse fissure
- B) Lateral sulcus
- C) Longitudinal cerebral fissure
- D) Central sulcus

Answer: C) Longitudinal cerebral fissure

2. Which pole of the hemisphere is described as being more pointed than the others?

- A) Frontal pole
- B) Temporal pole
- C) Occipital pole
- D) Parietal pole

Answer: C) Occipital pole

3. The sulcus that separates the frontal lobe from the parietal lobe is the:

- A) Lateral sulcus
- B) Central sulcus
- C) Parieto-occipital sulcus
- D) Calcarine sulcus

Answer: B) Central sulcus

4. Broca's area (motor speech area) is located in which gyrus?

- A) Superior frontal gyrus
- B) Middle frontal gyrus
- C) Inferior frontal gyrus
- D) Precentral gyrus

Answer: C) Inferior frontal gyrus

5. The "Primary Auditory Area" is located in which part of the temporal lobe?

- A) Superior temporal gyrus
- B) Middle temporal gyrus
- C) Inferior temporal gyrus
- D) Parahippocampal gyrus

Answer: A) Superior temporal gyrus

6. Which gyrus arches over the posterior end of the lateral sulcus?

- A) Angular gyrus
- B) Supramarginal gyrus
- C) Cingulate gyrus
- D) Gyrus rectus

Answer: B) Supramarginal gyrus

7. On the medial surface, the wedge-shaped area between the parieto-occipital and calcarine sulci is the:

- A) Precuneus
- B) Cuneus
- C) Paracentral lobule
- D) Cingulate gyrus

Answer: B) Cuneus

8. The olfactory bulb and tract are located in which sulcus on the orbital surface? \*\*

- A) Orbital sulcus
- B) Collateral sulcus
- C) Olfactory sulcus
- D) Rhinal sulcus

Answer: C) Olfactory sulcus

9. The paracentral lobule surrounds the upper end of which sulcus?

- A) Lateral sulcus
- B) Central sulcus
- C) Cingulate sulcus
- D) Postcentral sulcus

Answer: B) Central sulcus

10. Which gyrus lies immediately above the corpus callosum on the medial surface?

- A) Lingual gyrus
- B) Cingulate gyrus
- C) Precuneus
- D) Medial frontal gyrus

Answer: B) Cingulate gyrus