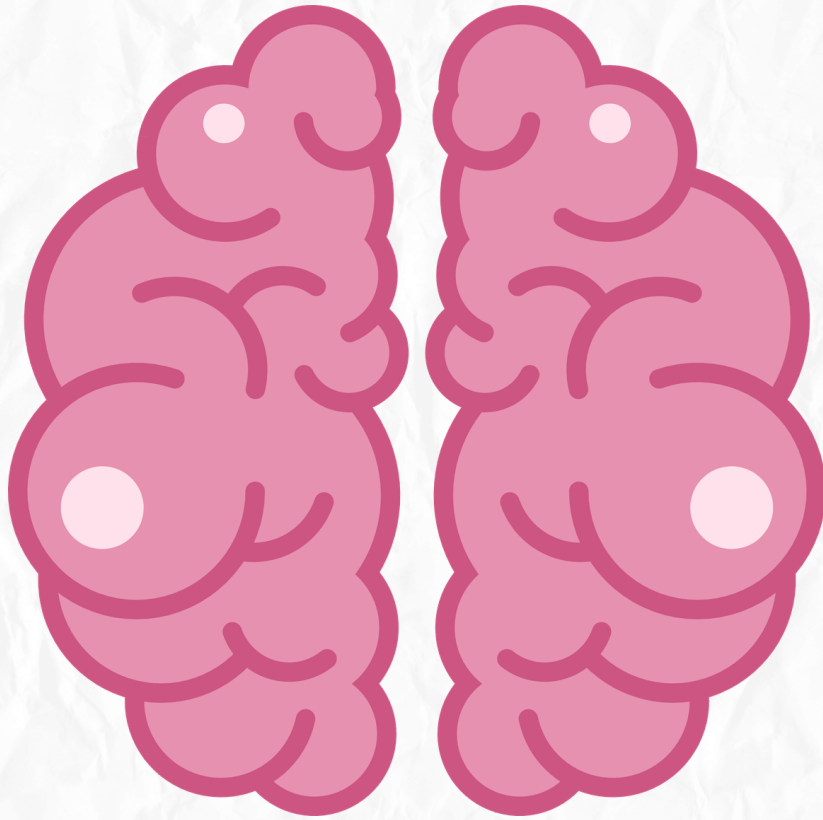


Neuroanatomy

Quiz time



Diencephalon

Lec 15



1. The anterior end of the thalamus is narrow and lies just behind which structure?

- A) The pulvinar
- B) The interventricular foramen
- C) The optic tract
- D) The pineal gland

Answer: B) The interventricular foramen

2. Which surface of the thalamus is covered by the tela choroidea of the lateral ventricle?

- A) Lateral surface
- B) Medial surface
- C) Superior surface (medial portion)
- D) Inferior surface

Answer: C) Superior surface (medial portion)

3. The thalamus is separated from the hypothalamus by the:

- A) Internal medullary lamina
- B) Inter-thalamic adhesion
- C) Hypothalamic sulcus
- D) Internal capsule

Answer: C) Hypothalamic sulcus

4. Which part of the thalamus acts as a relay station for visual impulses?

- A) Medial geniculate body
- B) Pulvinar
- C) Lateral geniculate body
- D) Anterior nucleus

Answer: C) Lateral geniculate body

5. Which nucleus is responsible for relaying auditory (hearing) impulses?

- A) Medial geniculate body
- B) Lateral geniculate body
- C) Ventral posterolateral nucleus
- D) Subthalamic nucleus

Answer: A) Medial geniculate body

6. The pineal body is a part of the:

- A) Thalamus
- B) Hypothalamus
- C) Epithalamus
- D) Metathalamus

Answer: C) Epithalamus

7. Which structure forms the floor and lower part of the lateral wall of the third ventricle?

- A) Thalamus
- B) Hypothalamus
- C) Subthalamus
- D) Pineal gland

Answer: B) Hypothalamus

8. Which hormone is secreted by the pineal body and helps regulate sleep quality?

- A) Oxytocin
- B) Vasopressin
- C) Melatonin
- D) Growth hormone

Answer: C) Melatonin

9. The subthalamus is located between the thalamus and the:

- A) Corpus callosum
- B) Tegmentum of the midbrain
- C) Pons
- D) Optic chiasma

Answer: B) Tegmentum of the midbrain

10. Which of the following is NOT part of the epithalamus?

- A) Habenular nuclei
- B) Pineal body
- C) Mamillary bodies
- D) Habenular commissure

Answer: C) Mamillary bodies