

وسهلا



أهلا

يُمنع أخذ السلايدات بدون  
إذن المحرر واي اجراء  
يخالف ذلك يقع تحت طائلة  
المسؤولية القانونية  
جميع المعلومات للاستخدام  
التعليمي فقط

الأستاذ الدكتور يوسف حسين

كلية الطب - جامعة مؤتة - الأردن

دكتورة من جامعة كولونيا ألمانيا

Prof. Dr. Youssef Hussein Anatomy - YouTube

اليوتيوب د. يوسف حسين



# Pituitary gland

[Prof. Dr. Youssef Hussein Anatomy - YouTube](#)

## Position

**Tuberculum sellae**

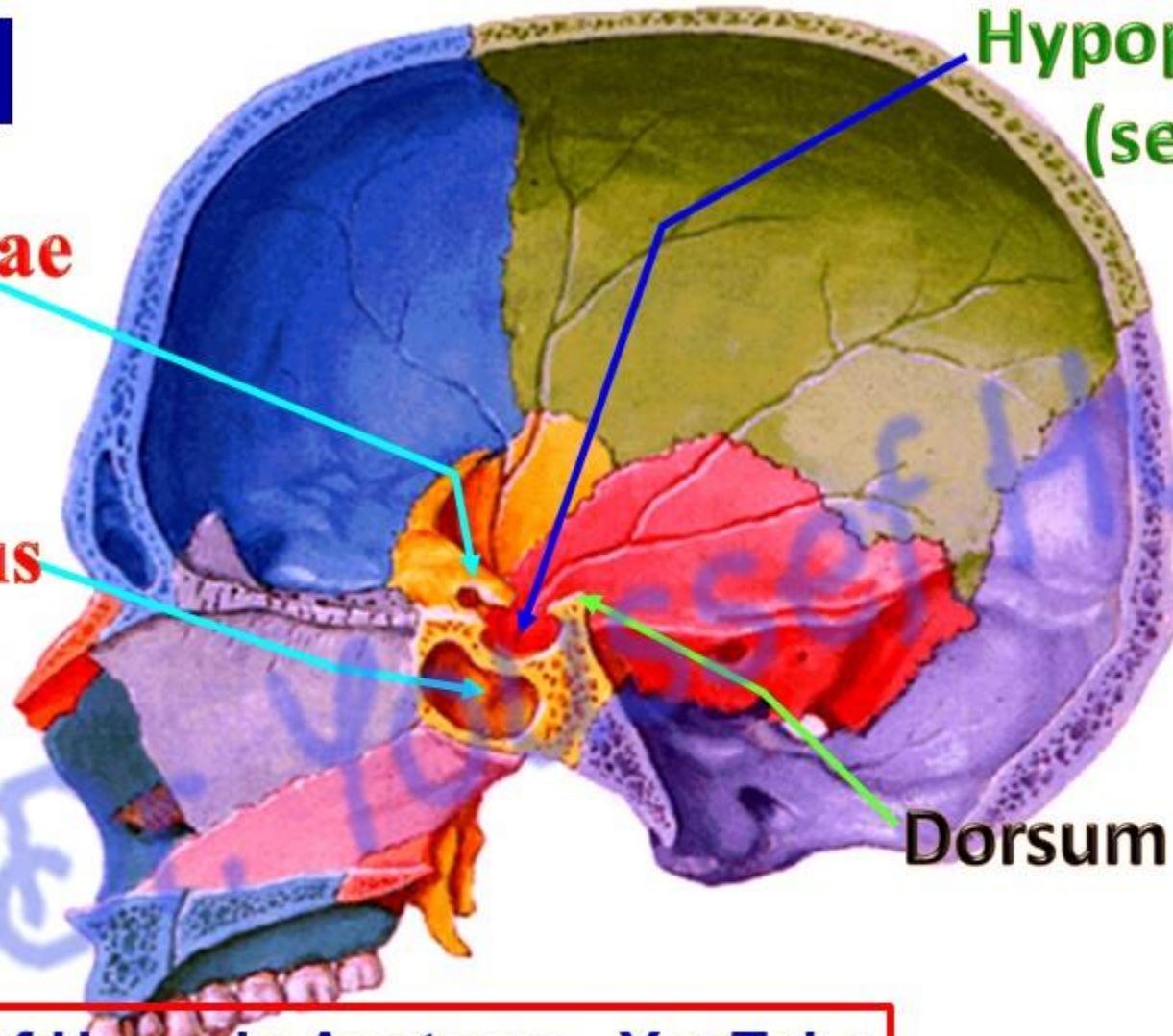
**Sphenoid air sinus**

**Hypophyseal fossa  
(sella turcica)**

**Dorsum sellae**

**Prof. Dr. Youssef Hussein Anatomy - YouTube**

- The pituitary gland is a pea-sized "master gland" located at the base of the brain in the sella turcica

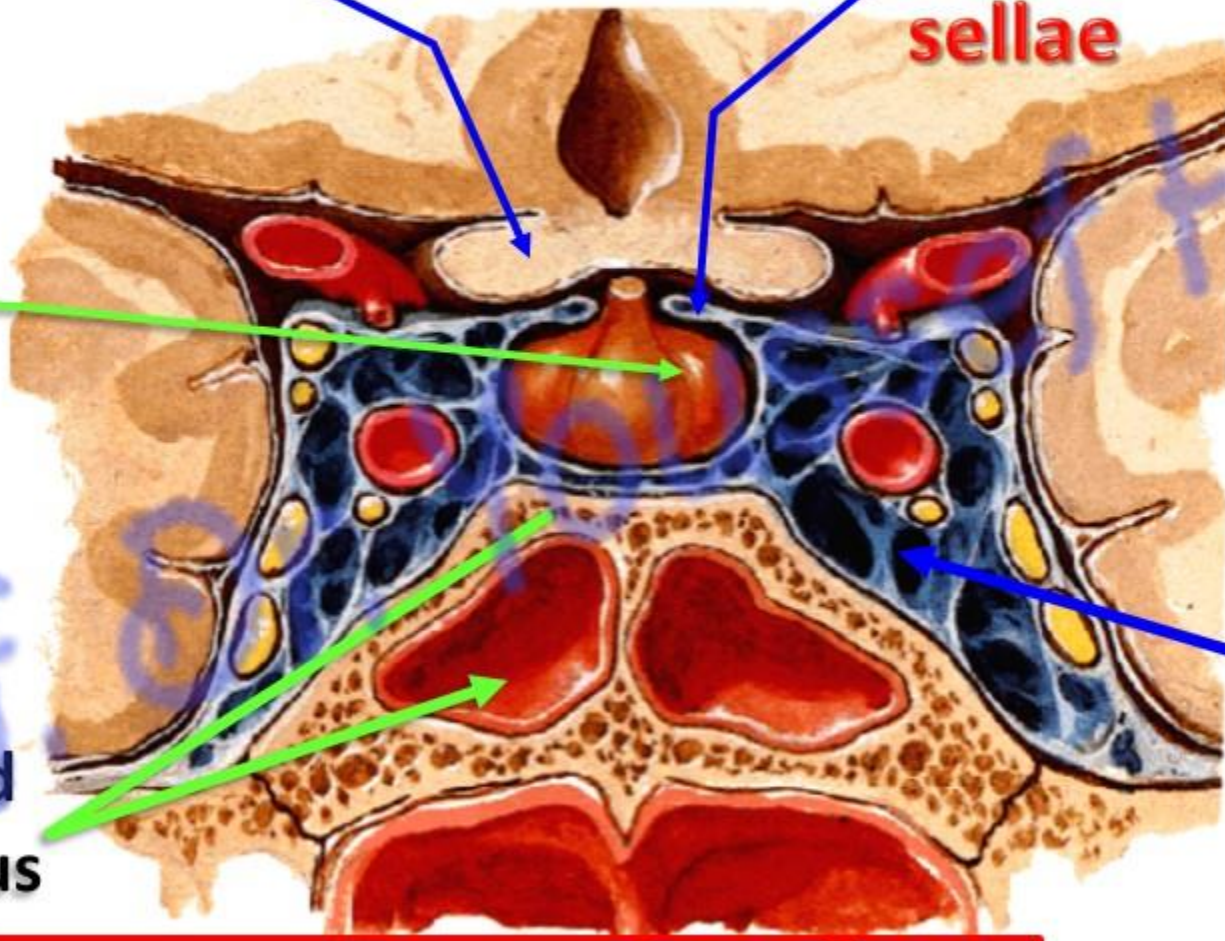


# Relations of pituitary gland

Hypothalamus

diaphragma  
sellae

Pituitary  
gland

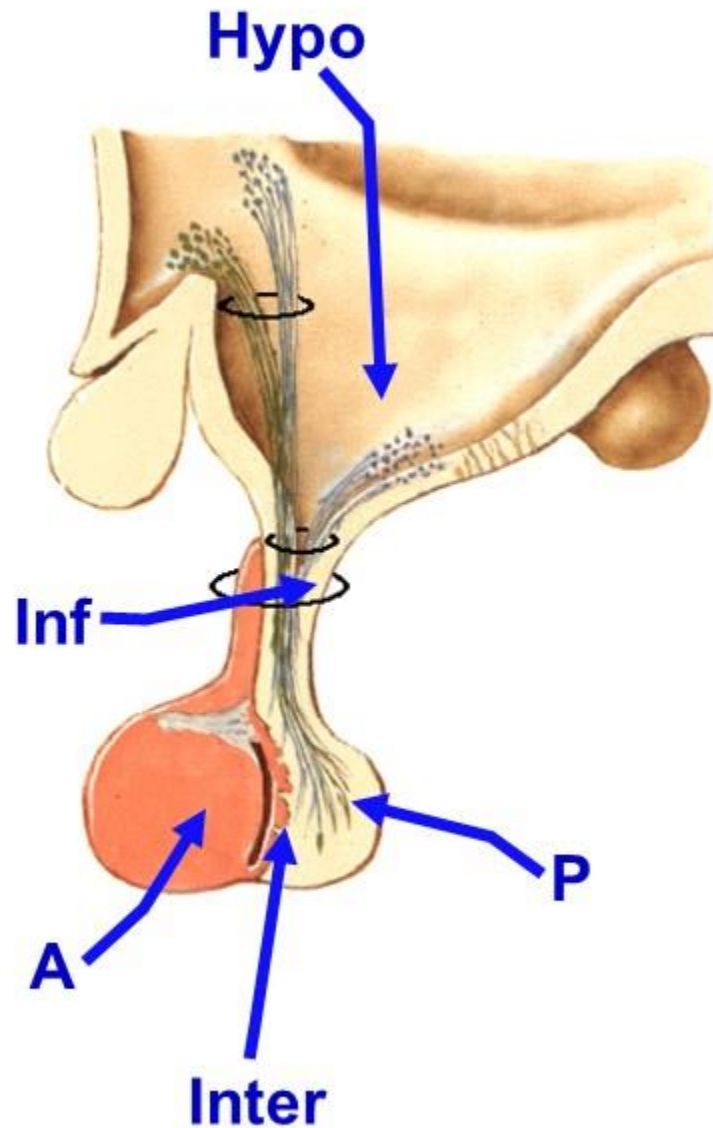


- **Above:** diaphragma sellae separating it from hypothalamus.

- **Below:** body of sphenoid and sphenoidal air sinus.

**Lateral:**  
**Cavernous sinus**

Body of sphenoid  
Sphenoid air sinus



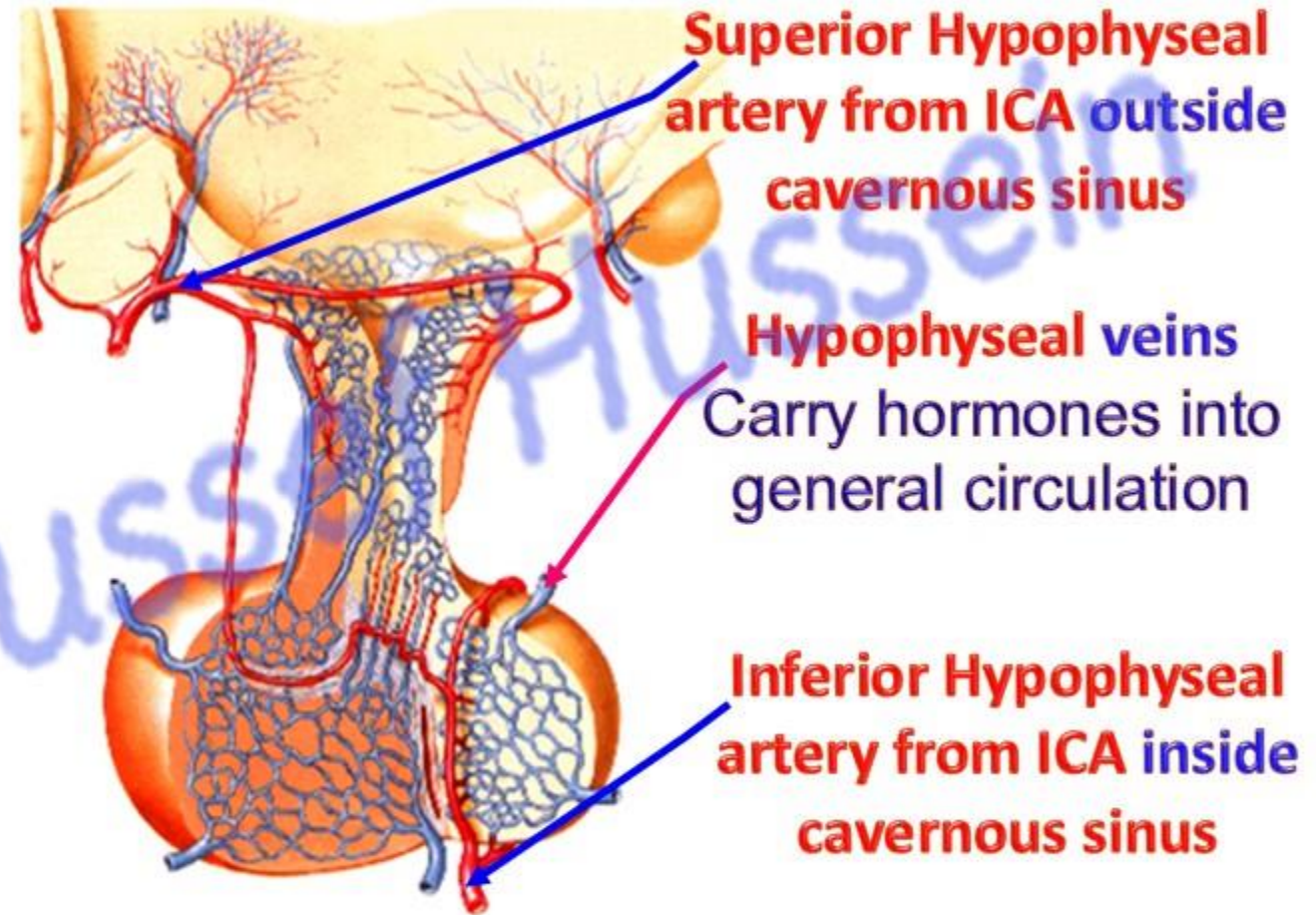
## Lobes and connection of the Pituitary Gland:

- **Anterior Pituitary (Adenohypophysis):** Constitutes roughly 80% of the gland, Communicates with the hypothalamus via a network of blood vessels known as the hypophyseal portal system, receiving signals via blood .
- **Posterior Pituitary (Neurohypophysis):** Consists of nerve fibers connected to the hypothalamus via the hypothalamohypophyseal tract, a direct nerve connection from the hypothalamus, receiving signals via neural axons .
- **Intermediate Lobe (Pars Intermedia):** A small, often indistinct zone located between the anterior and posterior lobes.
- **Infundibulum (Pituitary Stalk):** The structure that connects the posterior pituitary directly to the hypothalamus

## Blood supply

### Hypophyseal Portal System:

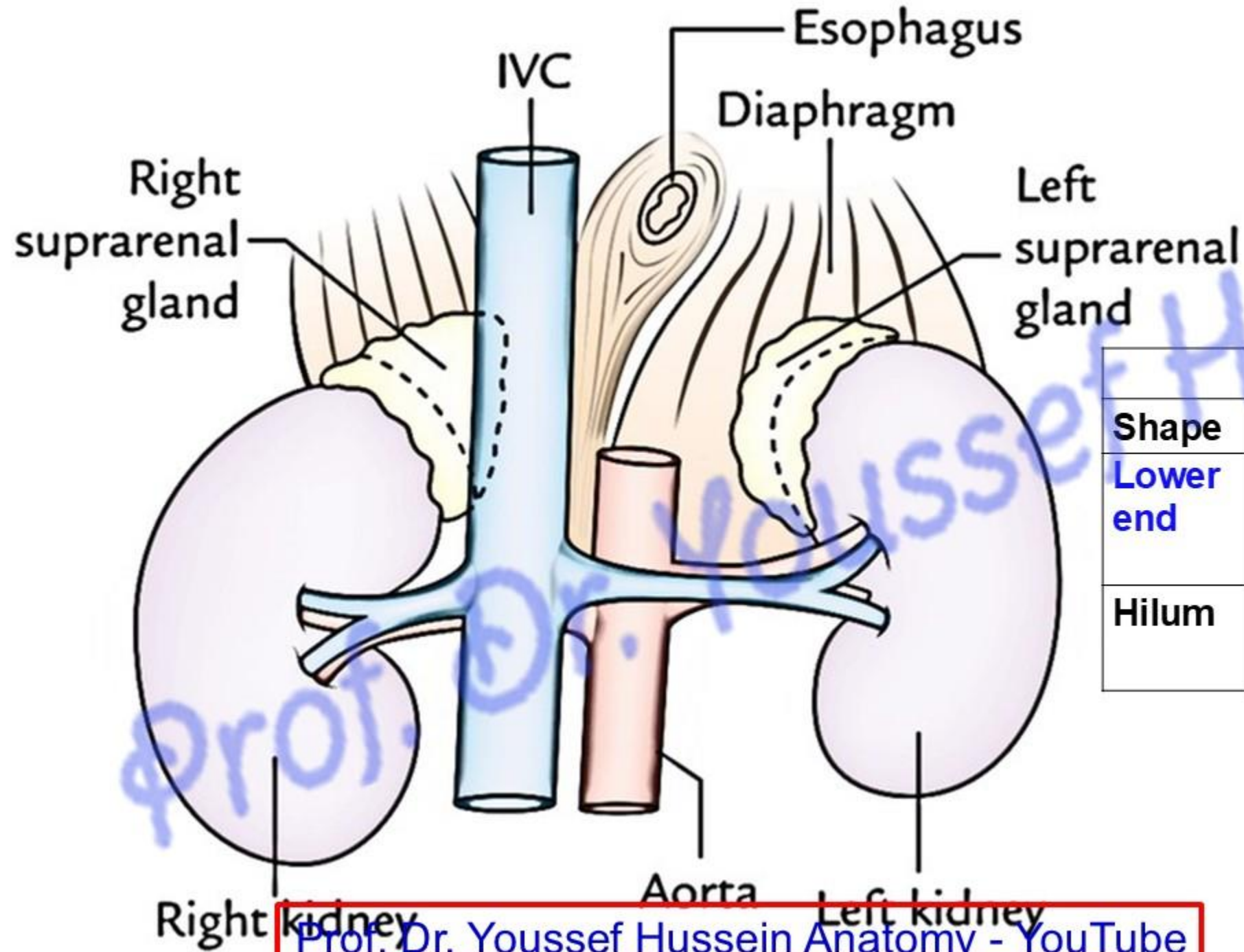
- A two-capillary bed system: the primary plexus in the stalk and the secondary plexus in the anterior lobe.
- This allows high-concentration transport of hypothalamic hormones directly to the anterior pituitary without entering systemic circulation.



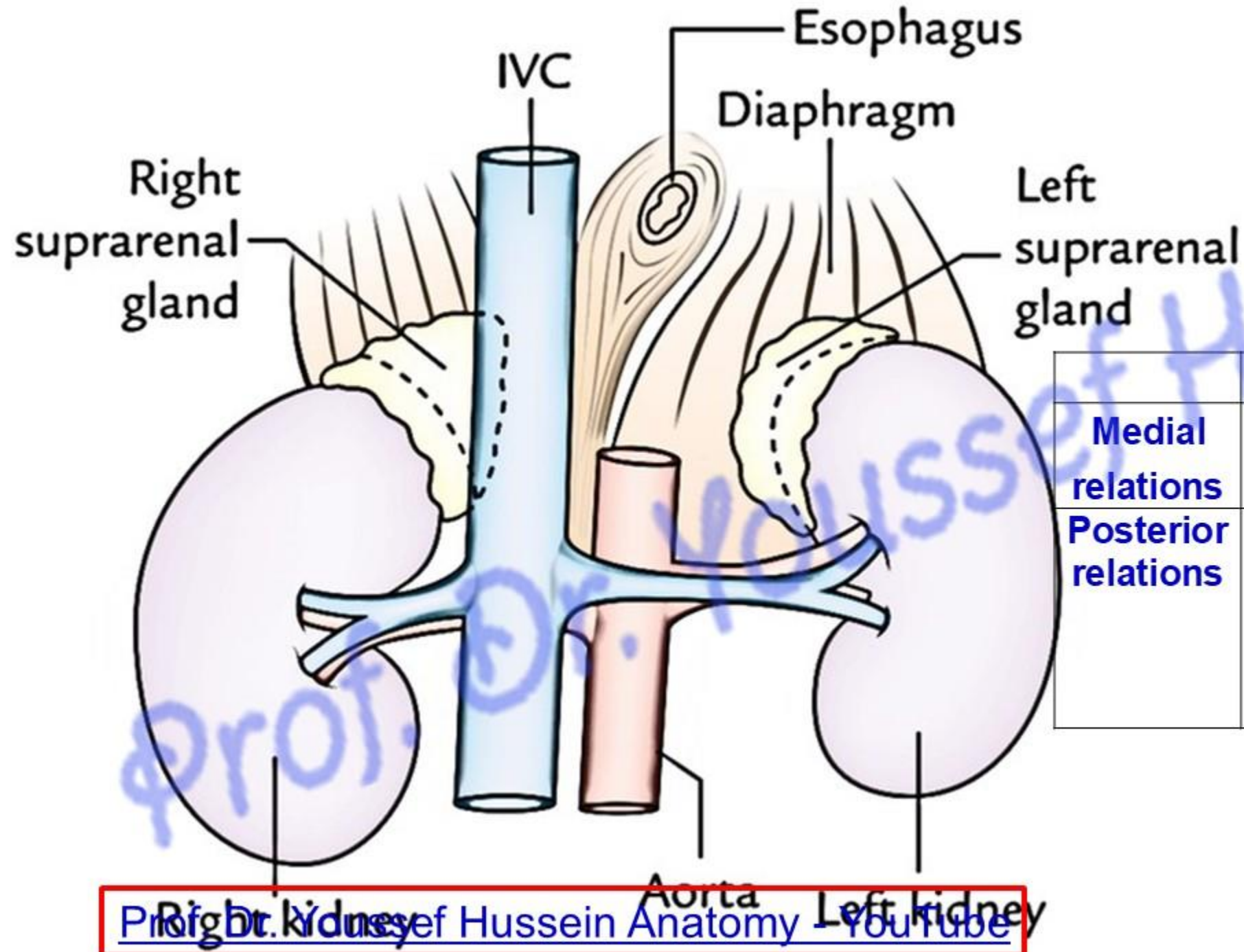


# Suprarenal gland

[Prof. Dr. Youssef Hussein Anatomy - YouTube](#)



	<b>Right</b>	<b>Left</b>
Shape	<b>Triangular,</b>	<b>Semilunar</b>
Lower end	<b>not reaching hilum of kidney</b>	<b>reaching hilum of kidney</b>
Hilum	<b>Directed upward</b>	<b>Directed downward</b>



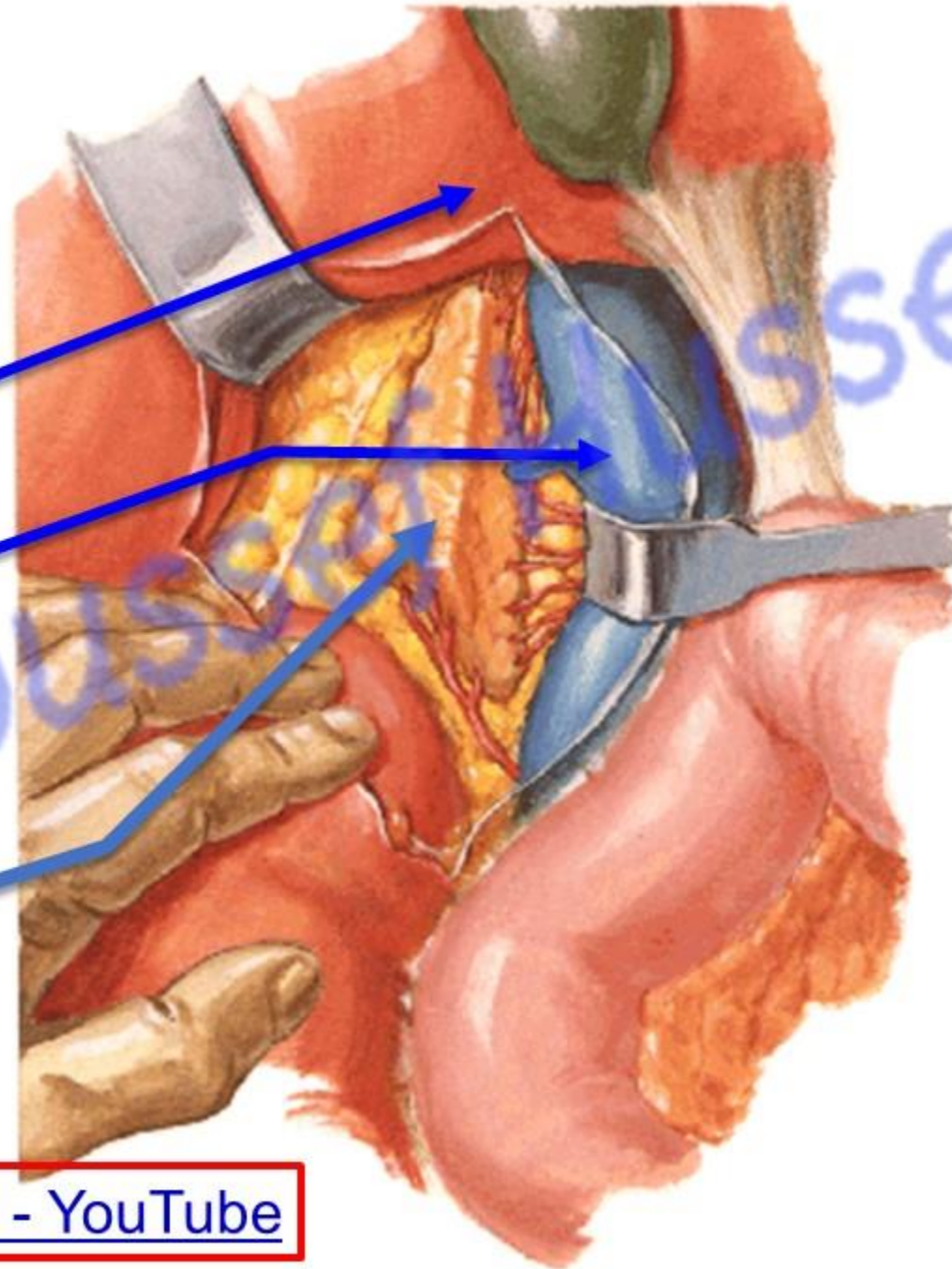
	Right	Left
Medial relations	IVC	Aorta
Posterior relations	- Right kidney - Right crus of diaphragm	- Left kidney - Left crus of diaphragm

# Anterior Relations of Right Suprarenal gland

Bare area of Liver (lateral)

IVC (medial)

Right suprarenal gland



# Anterior Relations of Left Suprarenal gland

[Prof. Dr. Youssef Hussein Anatomy - YouTube](#)

Stomach (upper)



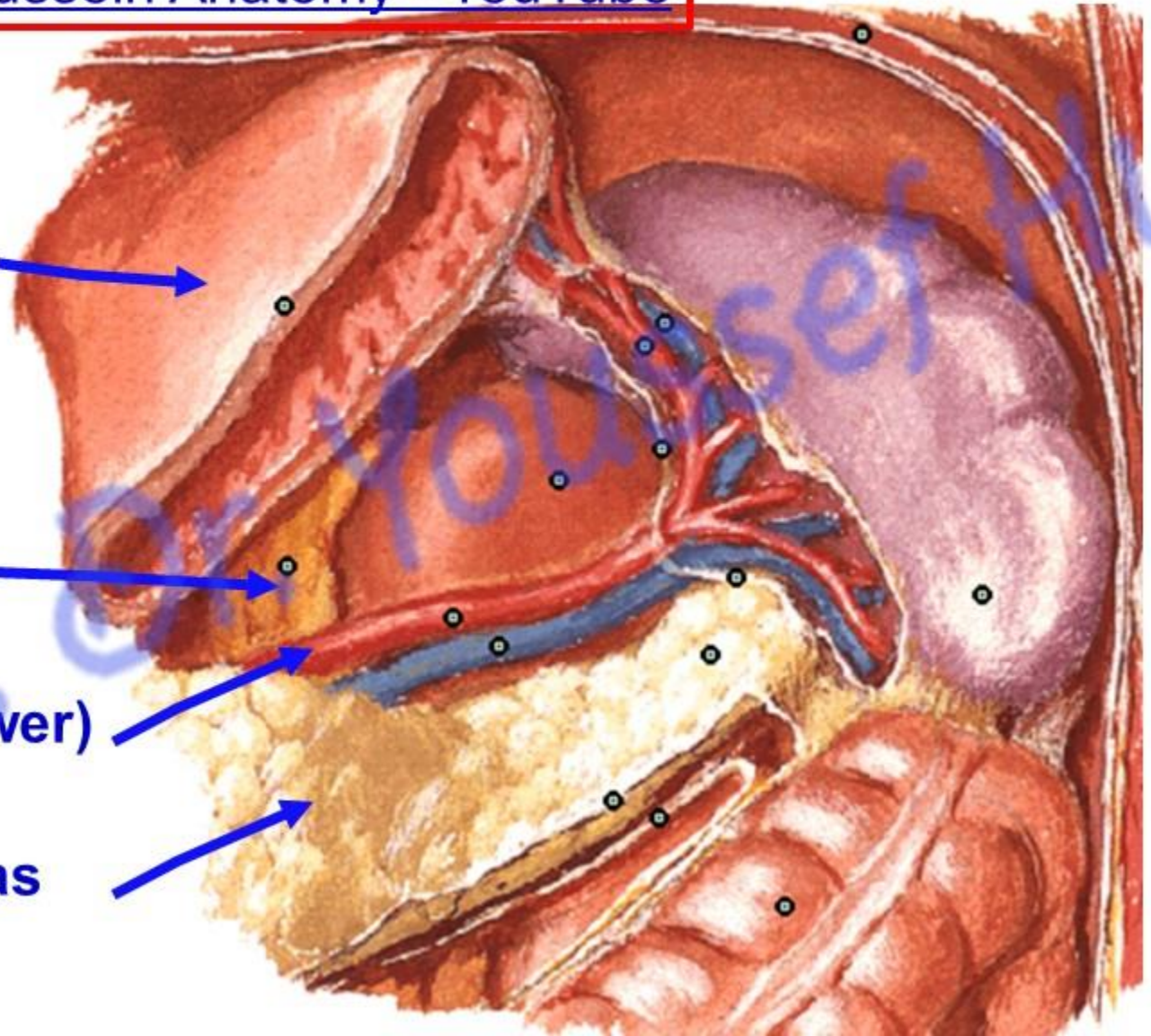
Left suprarenal gland



Splenic artery (lower)

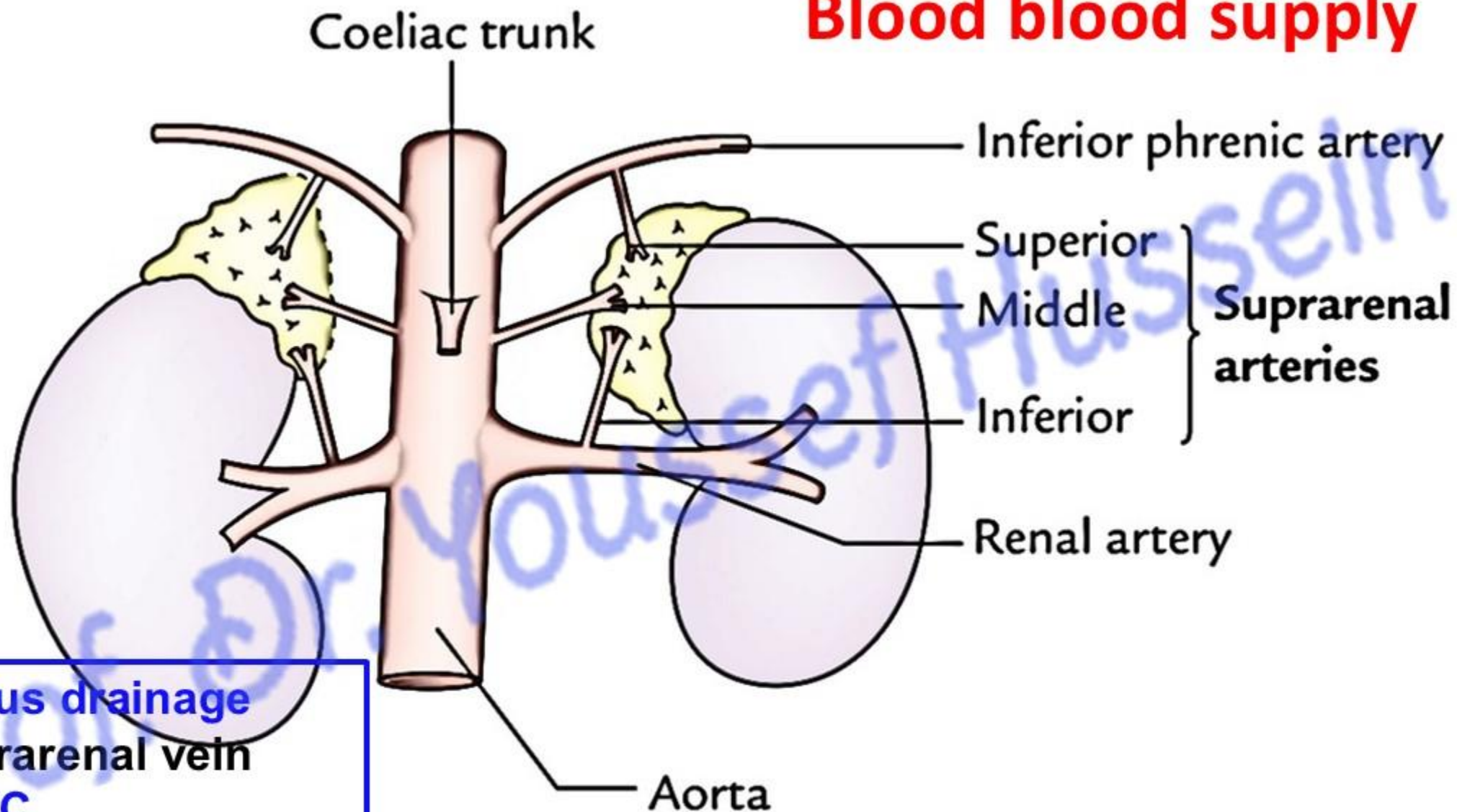


Body of pancreas (lower)



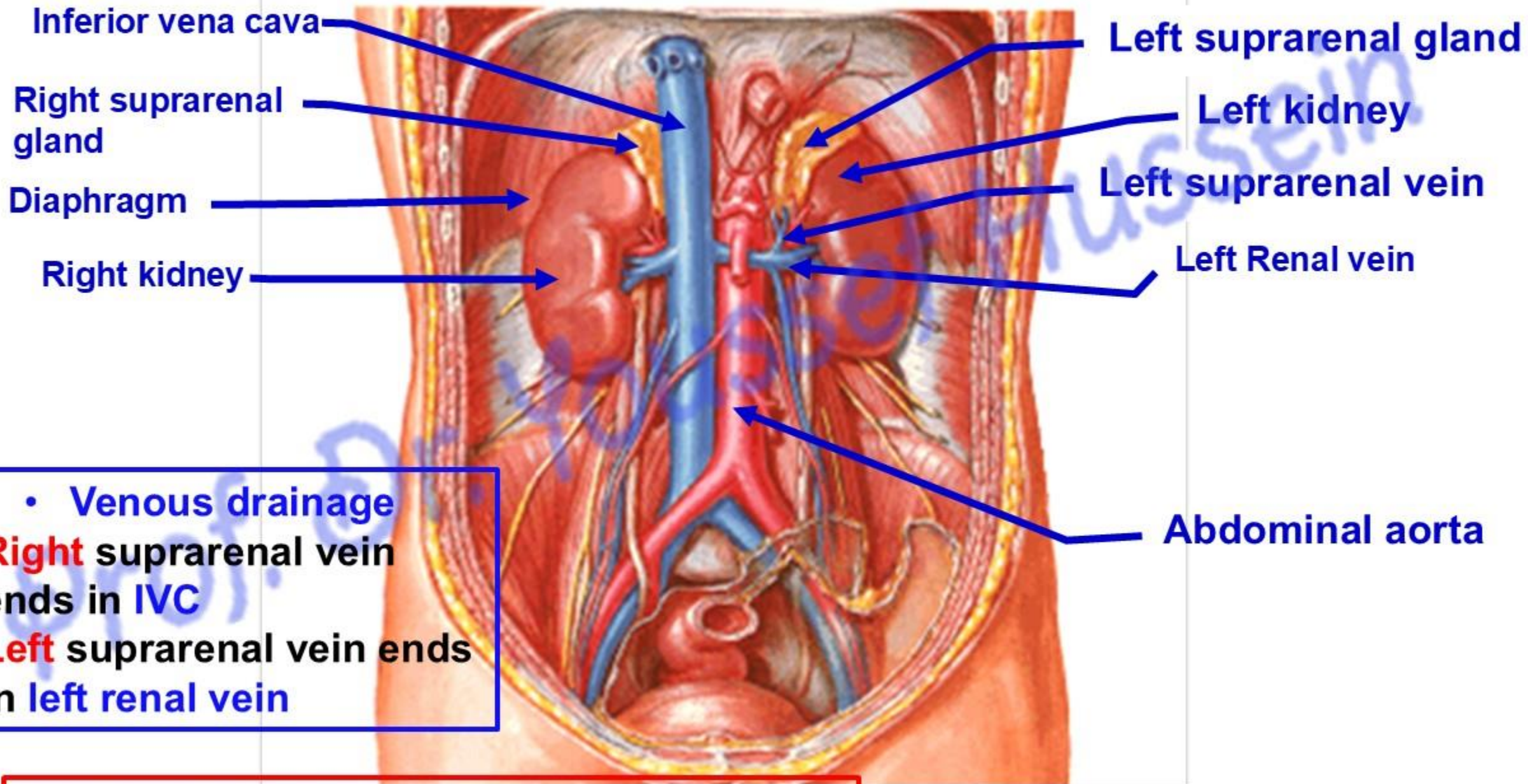
Youssef Hussein

# Blood blood supply



- **Venous drainage**

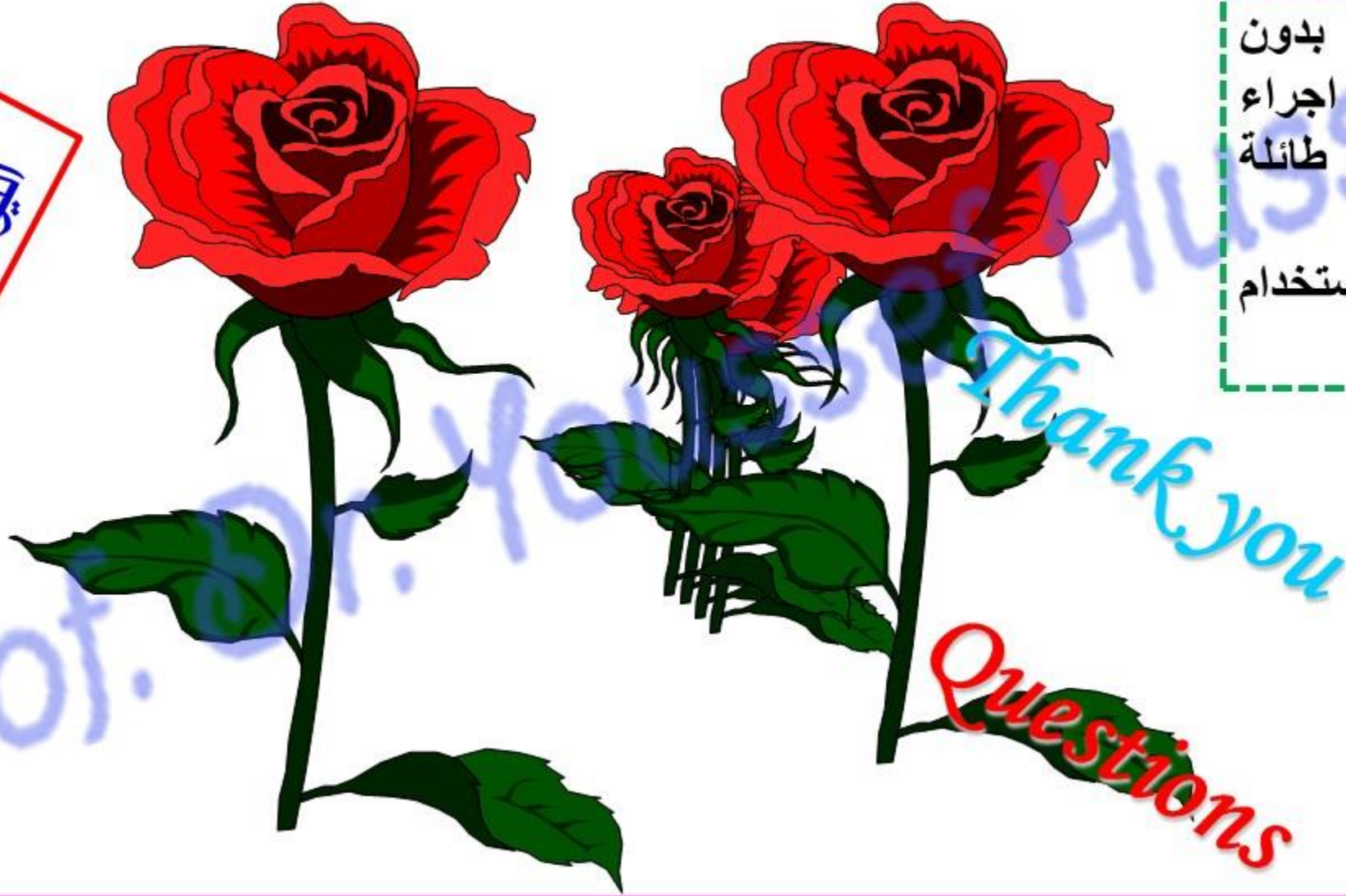
- **Right** suprarenal vein ends in **IVC**
- **Left** suprarenal vein ends in **left renal vein**



[https://www.youtube.com/channel/UCVSNqbibj9UWYaJdd\\_cn0PQ](https://www.youtube.com/channel/UCVSNqbibj9UWYaJdd_cn0PQ)

يُمنع أخذ السلايدات بدون  
إذن المحرر واي اجراء  
يخالف ذلك يقع تحت طائلة  
المسؤولية القانونية  
جميع المعلومات للاستخدام  
التعليمي فقط

اليوتيوب د. يوسف حسين



Thank You  
Questions

<https://www.youtube.com/@ProfDrYoussefHusseinAnatomy/playlists>