

BLOOD VESSELS

(Practical)

Blood vascular system is formed of:

1- Arteries (large elastic – medium sized- arterioles)

2-Veins (large veins – medium sized- veins- venules)

3- Connection between arteries and veins

General structure of blood vessels

A) Tunica Intima:

- 1- Endothelium
- 2- Subendothelium:
- 3- Internal elastic lamina

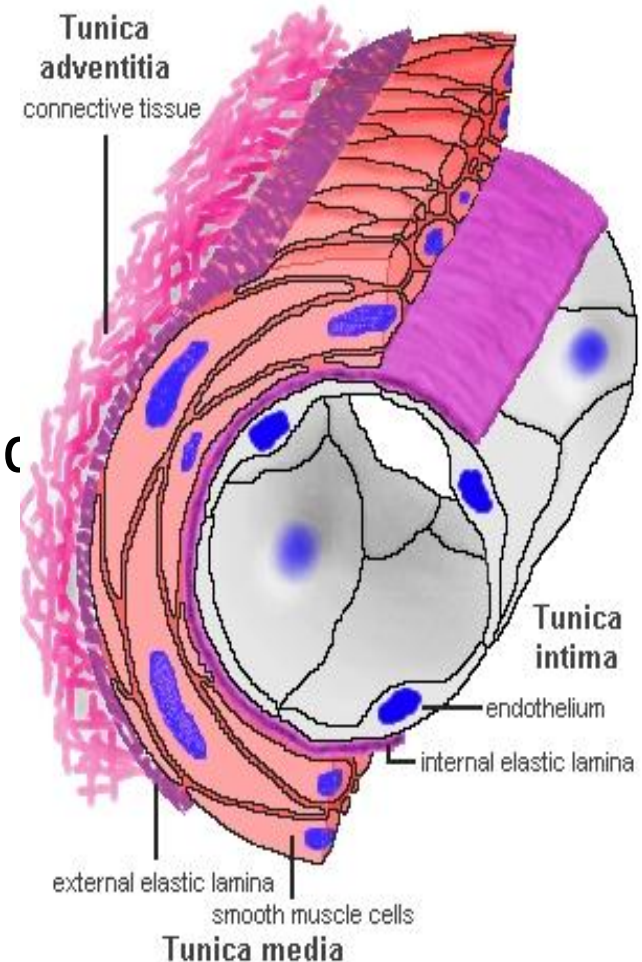
B) Tunica media:

Circularly arranged smooth muscles and elastic fibers

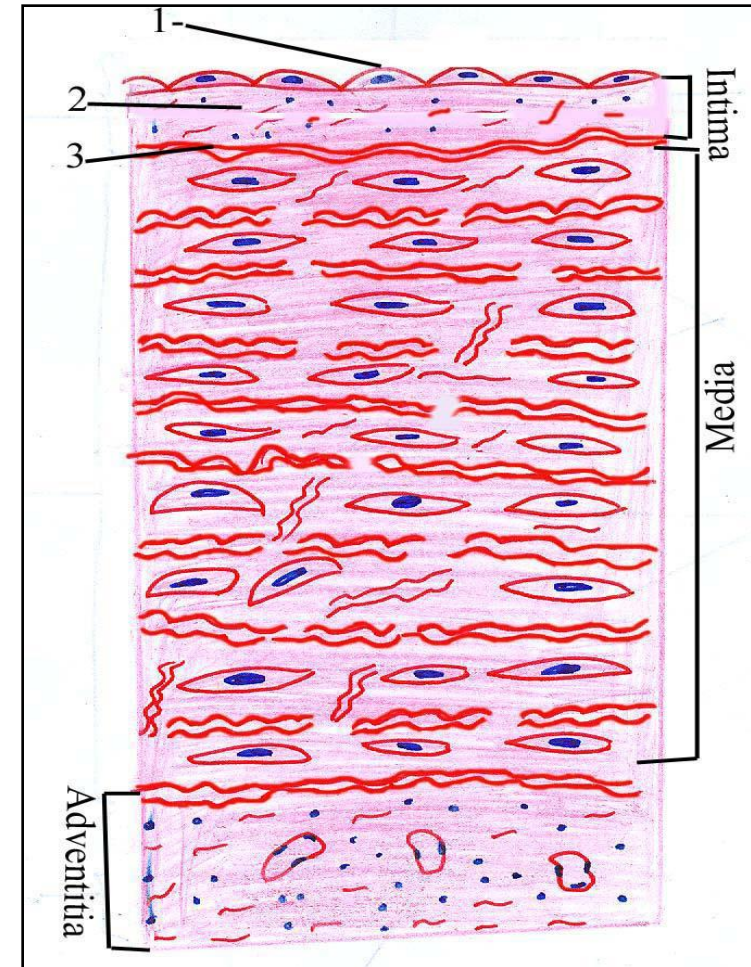
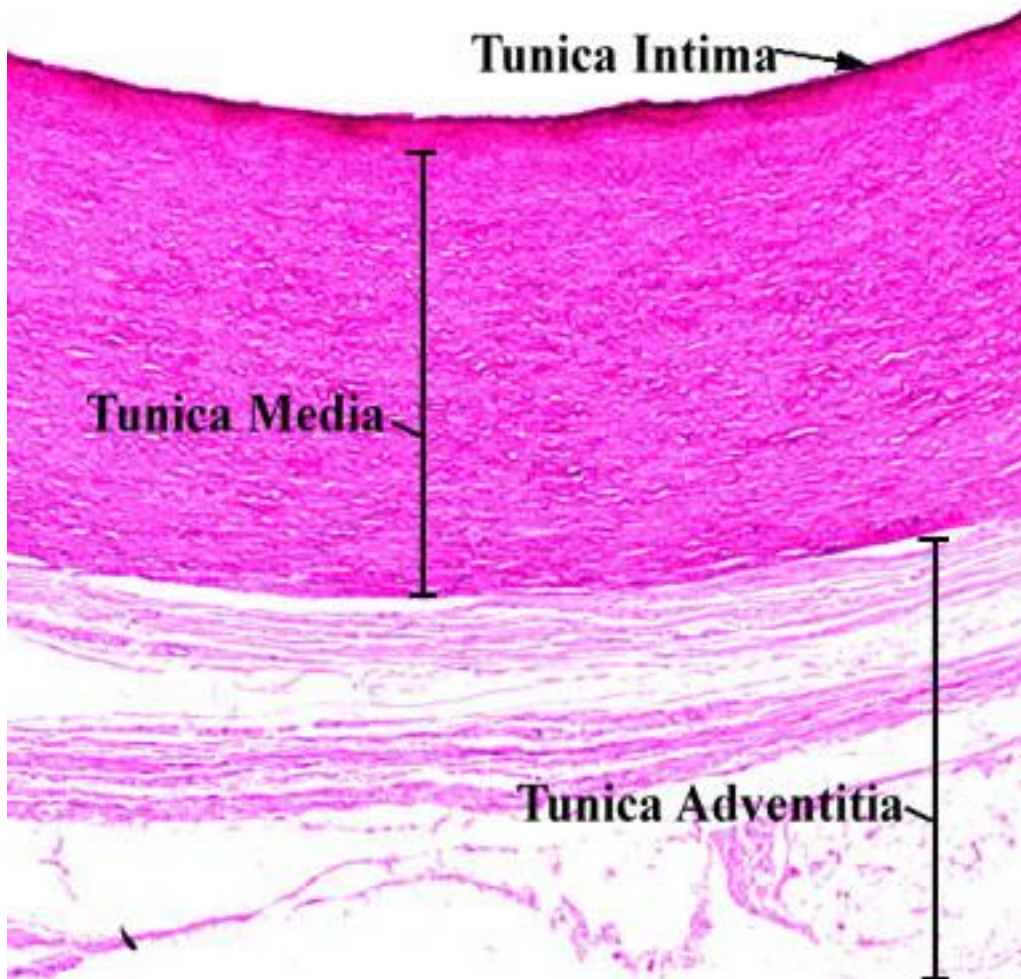
- External elastic lamina.

C) Tunica adventitia:

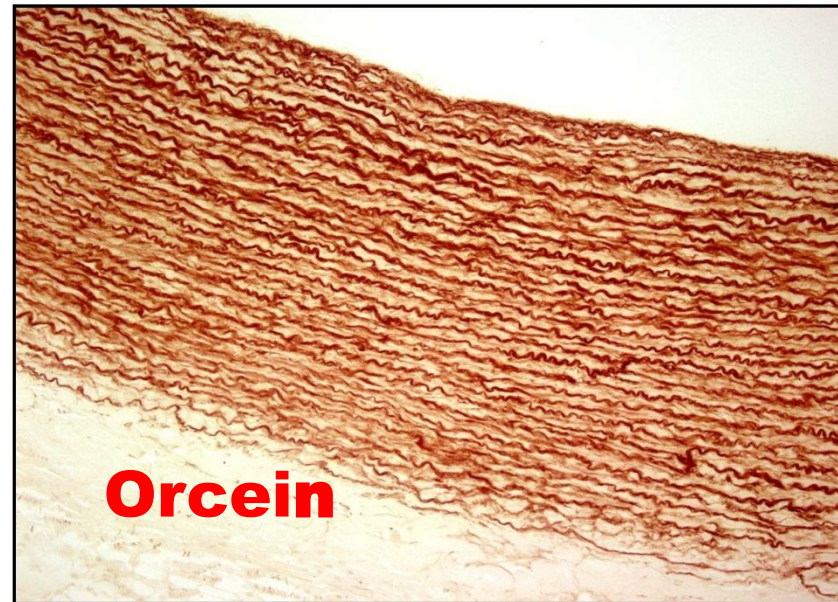
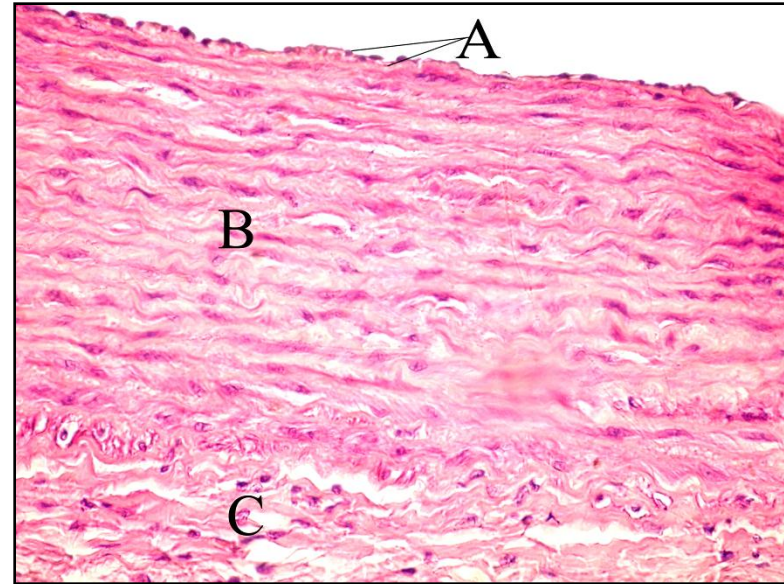
Loose C.T.



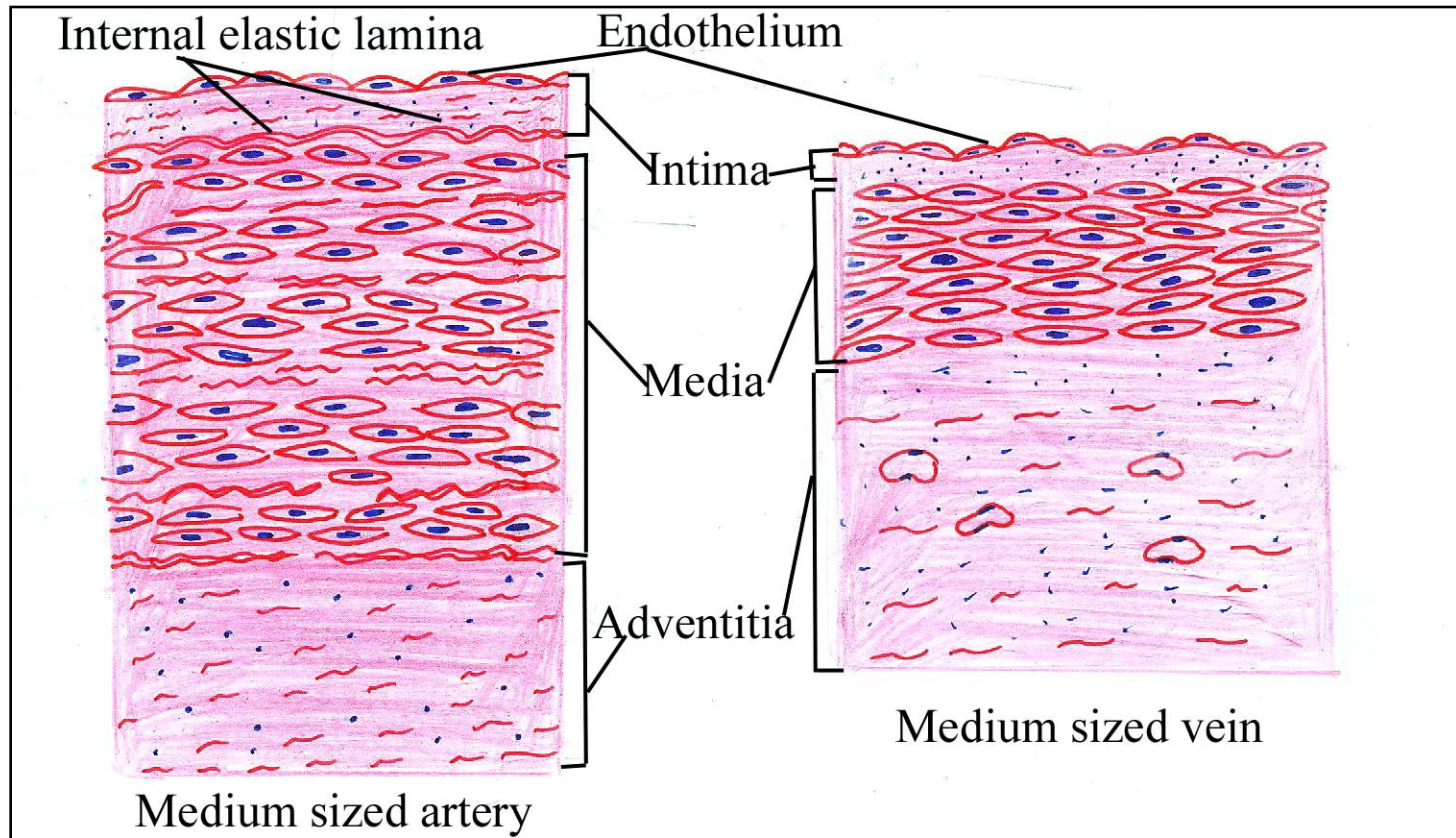
LARGE (ELASTIC) ARTERIES (AORTA)



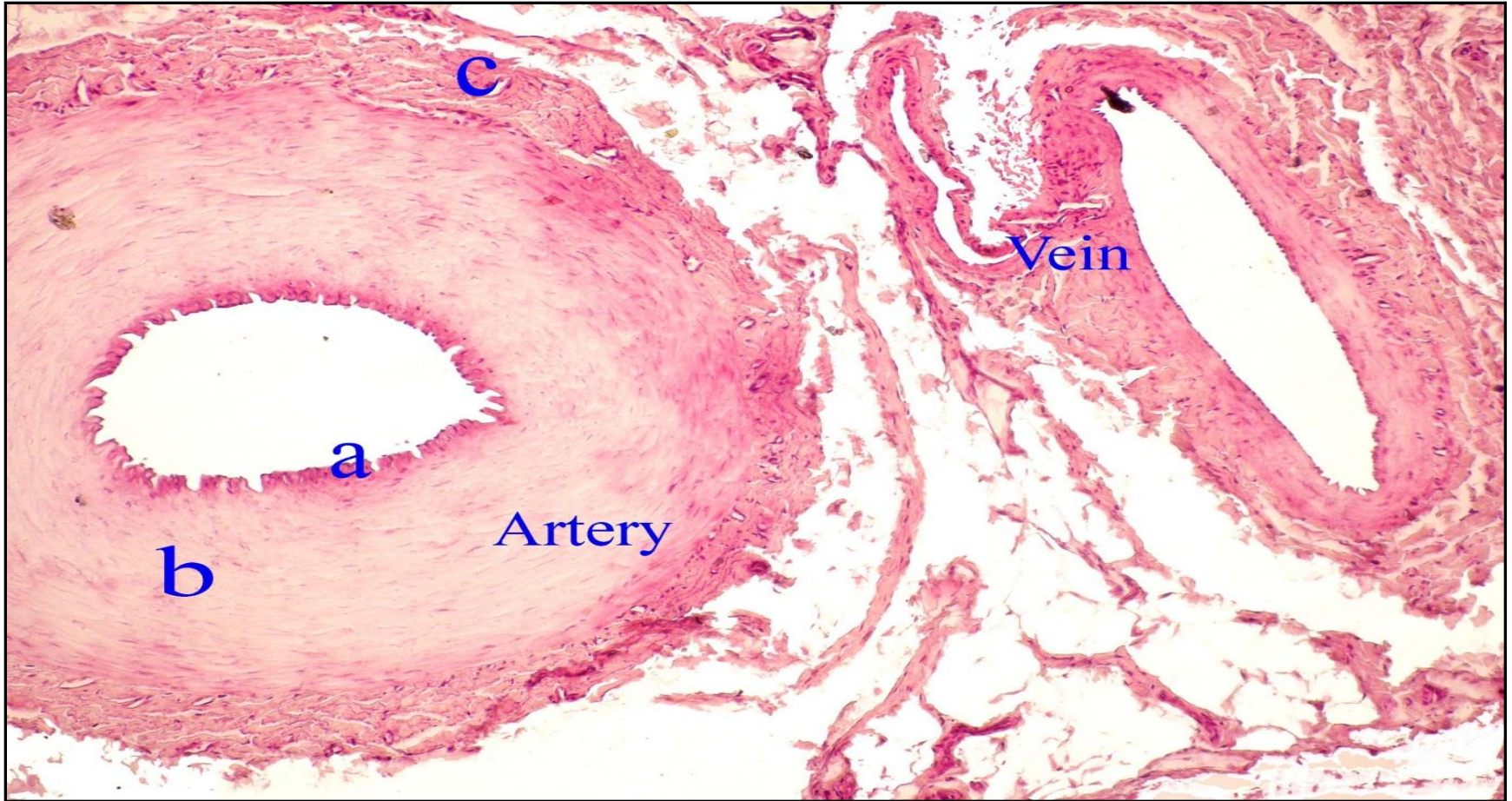
AORTA



MEDIUM – SIZED ARTERY & Vein



MEDIUM – SIZED ARTERY & Vein



THANK

YOU