

Shagaf

Physiology Final

Designed By :

Raneem Dmour



1) cooling leading to:

clonus to tetanus

tetanus to clonus

treppe

none of the above

2) peripheral nervous system:

brain and spinal cord

cranial and spinal nerves

sensory nerve only

brain stem and cranial nerve

3) true statement about sympathetic nervous system :

arises from anterior horn cells

cranio sacral

thoraco lumbar

voluntary control

4) sympathetic that supply thorax:

Increase all properties of cardiac muscle

decrease coronary blood flow

works only in atria

V.C of coronary vessels

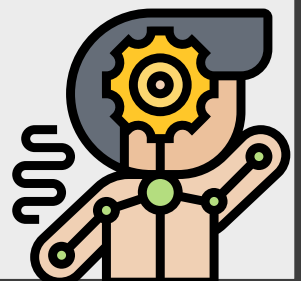
5) sympathetic that supply lesser splanchnic nerve:

erection

micturition

defecation

ejaculation of semen



6) parasympathetic
(Oculomotor)

produce pupillodilation
(mydriasis)

constrictor pupillae muscle
(myosis)

vasoconstriction

All of the above

7) All of the following is true about facial nerve except:

sublingual and salivary glands

anterior 2/3 of tongue

nasal and lacrimal glands

parotid gland

8) Chemical transmitter of parasympathetic nervous system:

Acetylcholine

Adrenaline

Noradrenaline

Glutamine

9) Pacinian corpuscles:

pain receptors

Adapt very rapidly

Adapt very slowly

Never adapt

10) Stereognosis:

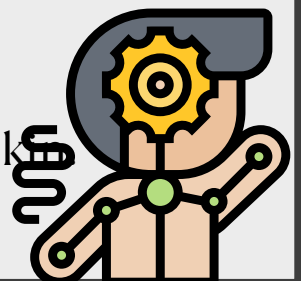
ability to recognize the previously educated objects present in
palms of hand without
vision.

Poorly localized, its receptors are free nerve ending and hair
end organ.

ability of the closed eye

person to determine the previously touched point on skin

Non of the above



11) one of the following is not related to proprioceptive :

Golgi tendon
muscle spindle
spray type ending
hair nerve ending

12) Regulation of body movements:

cerebellum
midbrain
cerebral cortex
medulla

13) Sets the pace at around 60 to about 80 beats per minute:

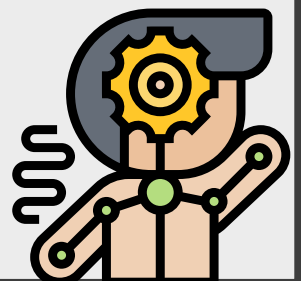
SA
AV
Purkinje
bundle branch

14) If the SA node is damaged
the heart depends on:

Buchmann's bundle
atrial internodal conduction
AV
purkinje

15) The most important factor that affects peripheral resistance:

polycythemia
length of blood vessels
diameter
anemia



16) In ventricular diastole phase, ventricular pressure increase at:

Rapid filling phase
slow filling phase
atrial diastole phase
atrial systole phase

17) One of the following is considered as descending tract:

vestibulo-spinal tract
gracile
cuneate
spino- olivary tract

18) One of the following is not related to lymphatic system:

carcinoma
lymphoma
sarcoma
lymph nodes

19) The volume of air respired in one minute minus dead space?

-Effective Pulmonary Ventilation

20) Velocity of blood flow in aorta?

-36 cm/second.

21) How smooth muscle differs from skeletal muscle?

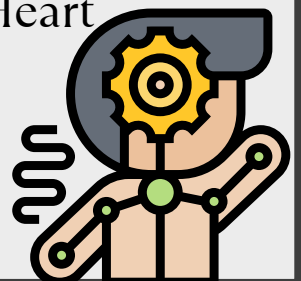
-Smooth muscle does not have a sarcomere.

22) If the frequency increases more and stimuli falls during contraction phase, leading to?

-complete tetanus.

23) What of the following has a relation with The First Heart Sound?

-low pitched.



24)The initiation rushing of blood into the ventricle make:

-The Third Heart Sound.

25)Not related to renal stenosis:

- Increase the GFR.

26)Not related with Frank-Starling Mechanism:

- Tension.

27)Ejection fraction % could be calculated by:

- SV/EDV.

:

27)Which of the following includes motor fibers ? A- gracile

b- cunate

c- lateral

d-medial

e-Vestibulo-spinal

28)If the pressure change from 80 to 100 , determine the TPR constant, the cardiac output (CO) equal?

A- 100-80

B-100/80

C-100*80

D-100+80

29)Dorsal (direct) tract get fiber from ?

A- Conscious

B-un Conscious

.....

30)The tract that carry accurate touch sensation and aware of position sense ?

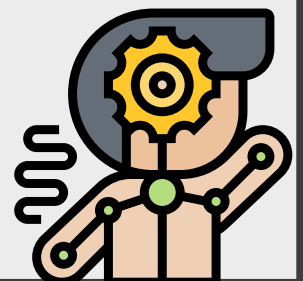
A-pramodial tract

B- extra pramodial tract

C- dorsal column

D- dorsal direct

E- ventral indirect



31) Which of the following is correct regarding first heart sound timing?

A- when p wave in ultrasonicogram

B- fixation atrium pressure

C - a rise in ventricular pressure

D- when A wave in

32) Which of the following sense adapted rapidly ?

A- cold sense

B- touch sense

C- hot sense

D- muscular sense

33) Which of the following receptors doesn't involve in proprioception sense ?

A- free nerve endings

B- Golgi tendon

C- spindle spray

* Which of the following are contractile proteins ? Actin and Myosin

* Which of the following isn't a character for 1st heart sound? It occur during isometric relaxation phase

* If fracture in sternum occur what is the thing that most be damaged? Aortic Arch

* Thin filaments are ? Actin + tropinin + tropomyosin

* Which of the following is a character for sympathetic? it's thoracolumbar division of ANS

* All of the following would increase CO except? TPR

* The area of contact between nerve fiber and muscle fiber called ? MEP

* All of the following affect stair case phenomenon except? Increase Mg^{+2}

* Which of the following is considered as exchange vessels? Capillaries

* The most important factor the affect TPR is ? Diameter

* If you given these pressures what would you expect that is for athletes? 40-50

* The percent of blood that found in systemic circulation is ? 84%

* What's true about H zone ?

It's divided by M line

