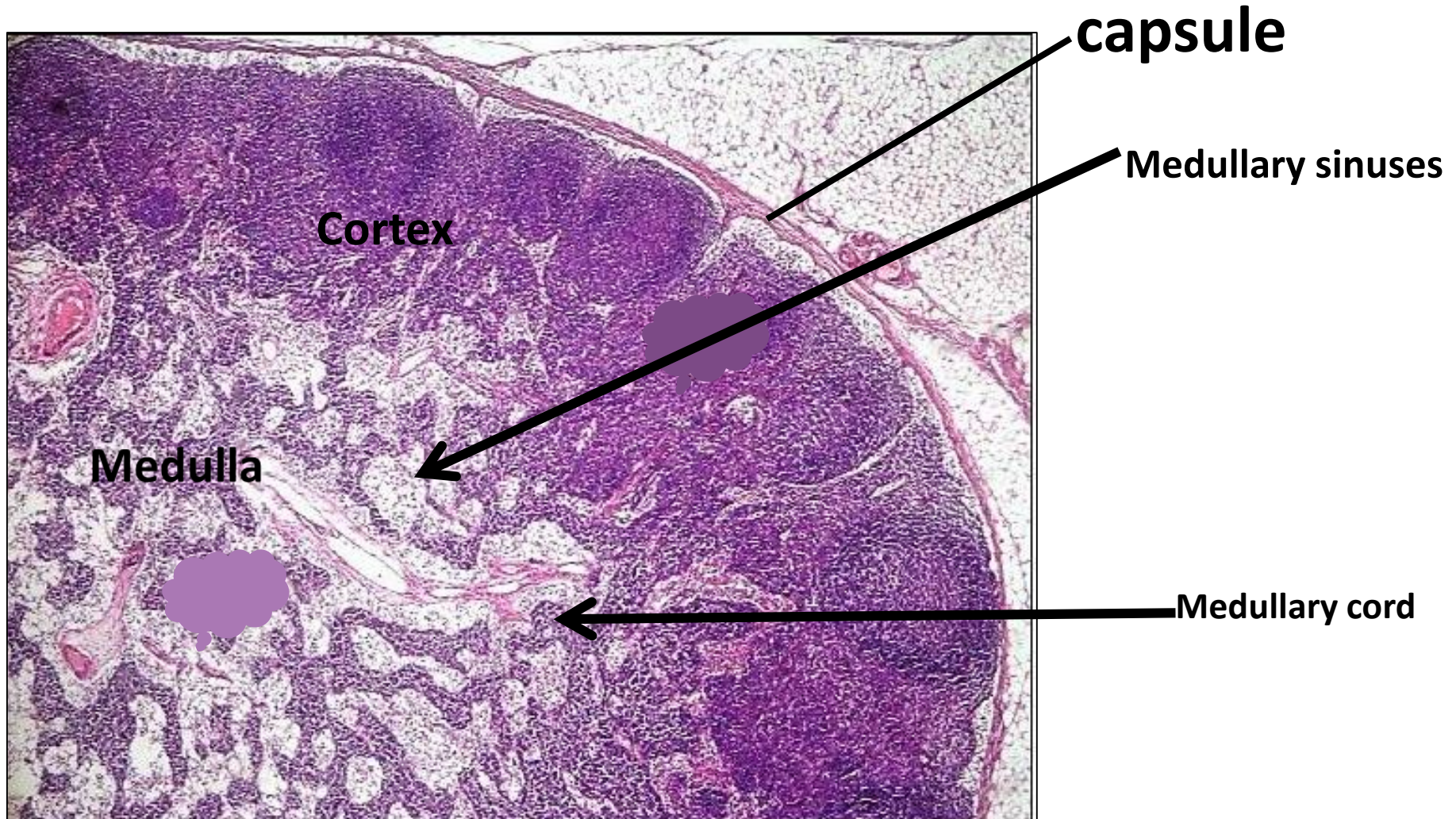


# Section in Lymph node showing medullary cords & sinuses

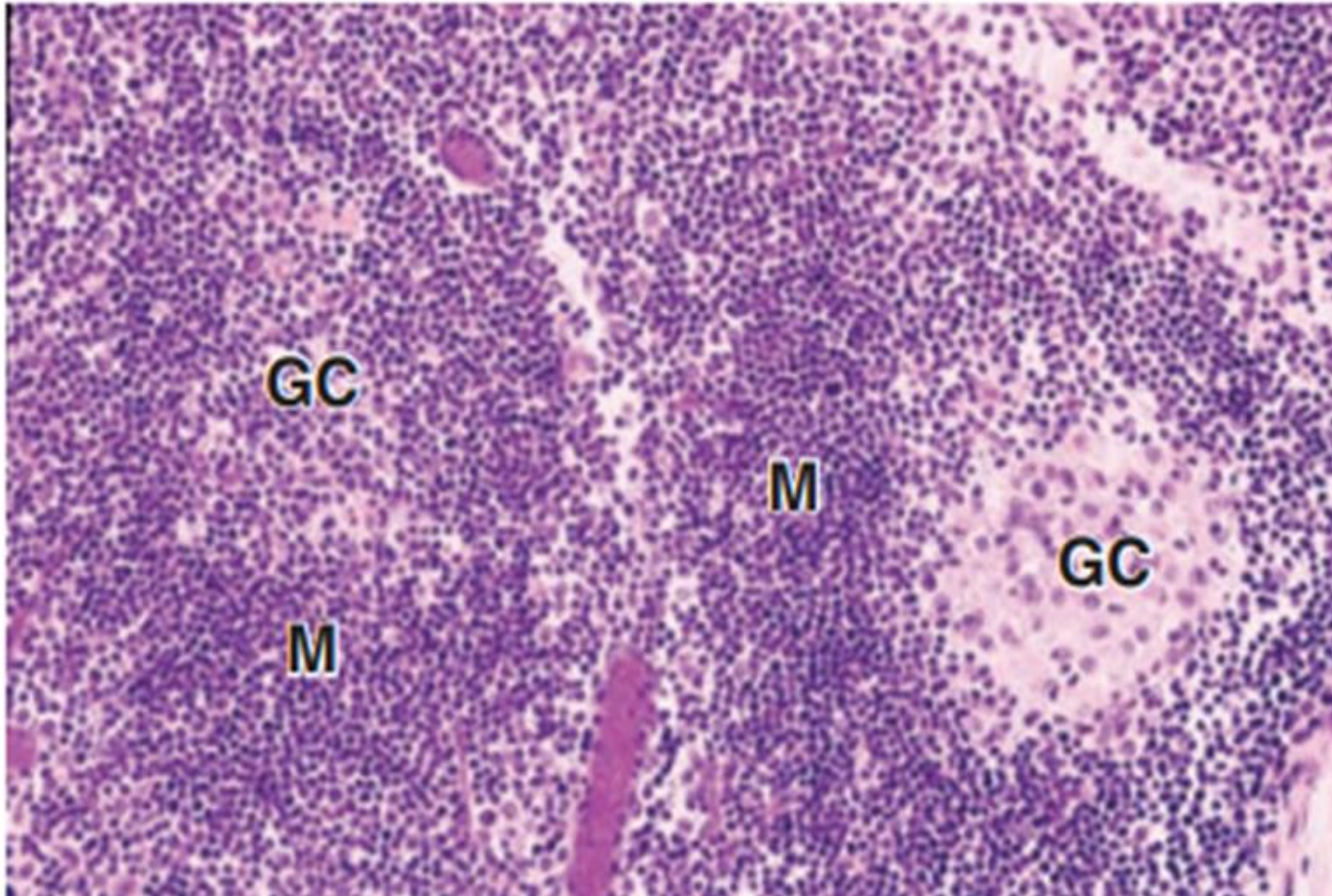




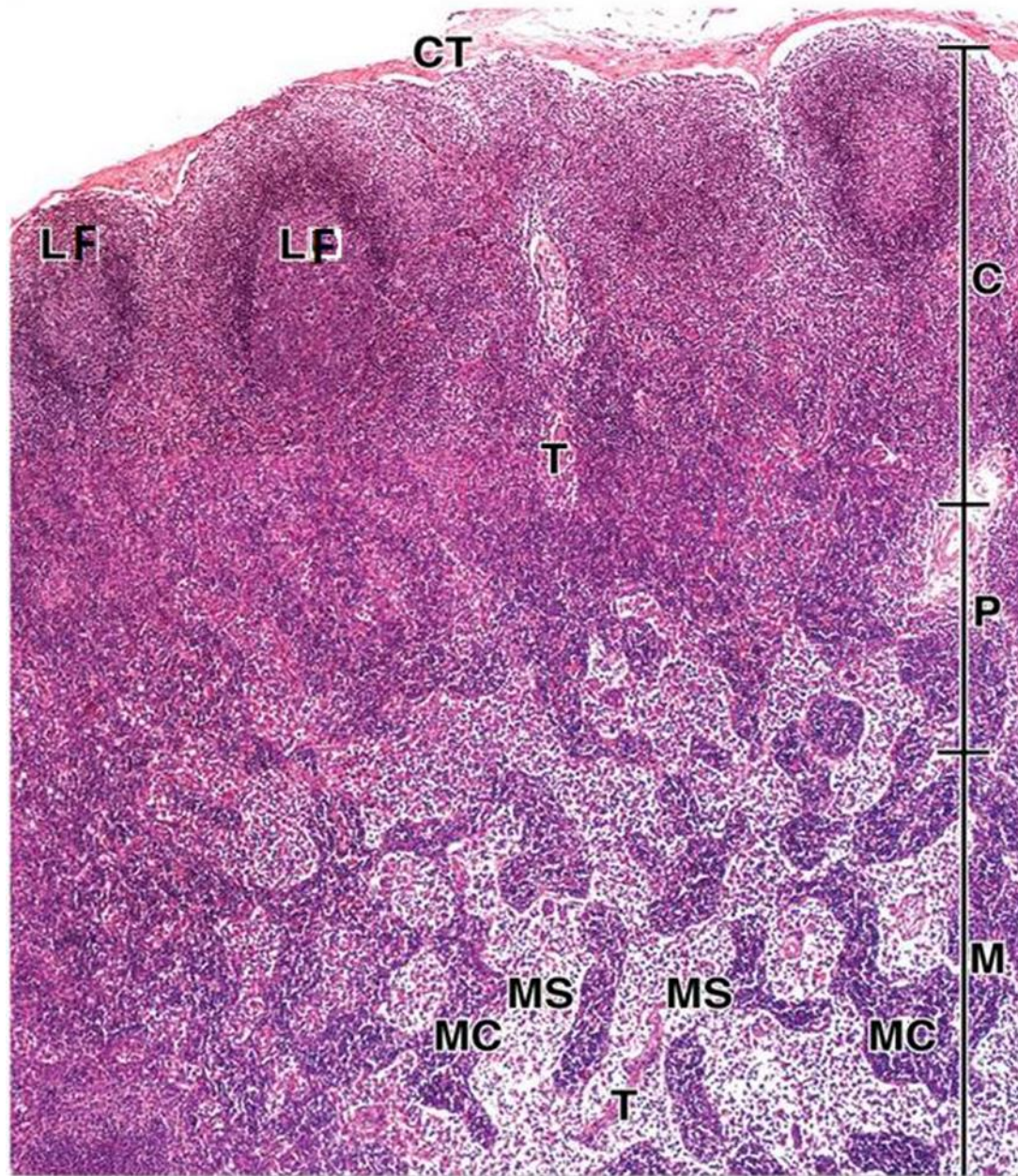
# Lymphatic nodule

**M=Mantle zone**

**GC= germinal centre**







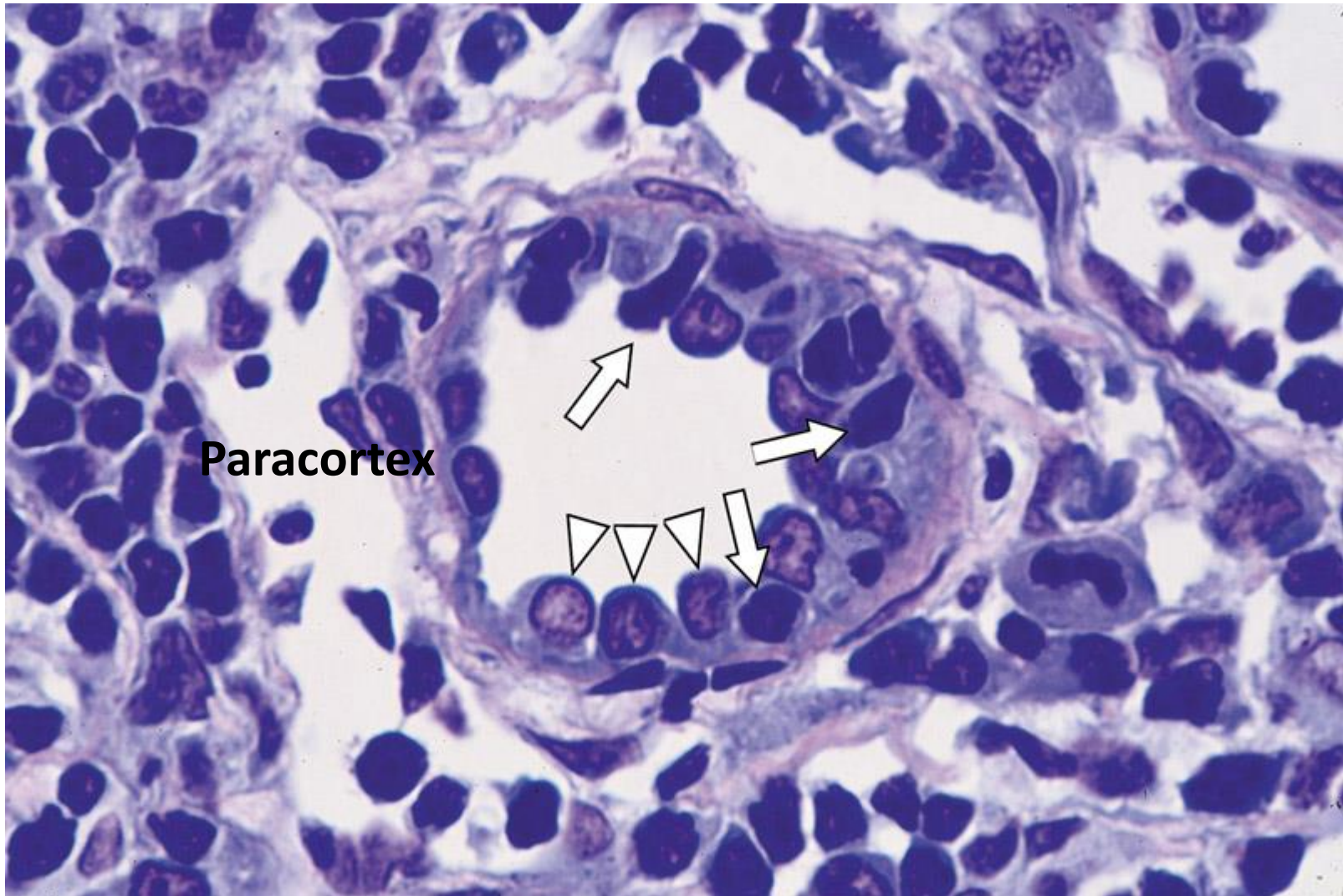
## Lymph node

- CT --- Connective tissue
- C --- Cortex
- M --- Medulla
- P --- Paracortex
- LF --- Lymph **F**ollicle
- T --- Trabeculae
- MS --- Medullary Sinus
- MC --- Medullary Cords



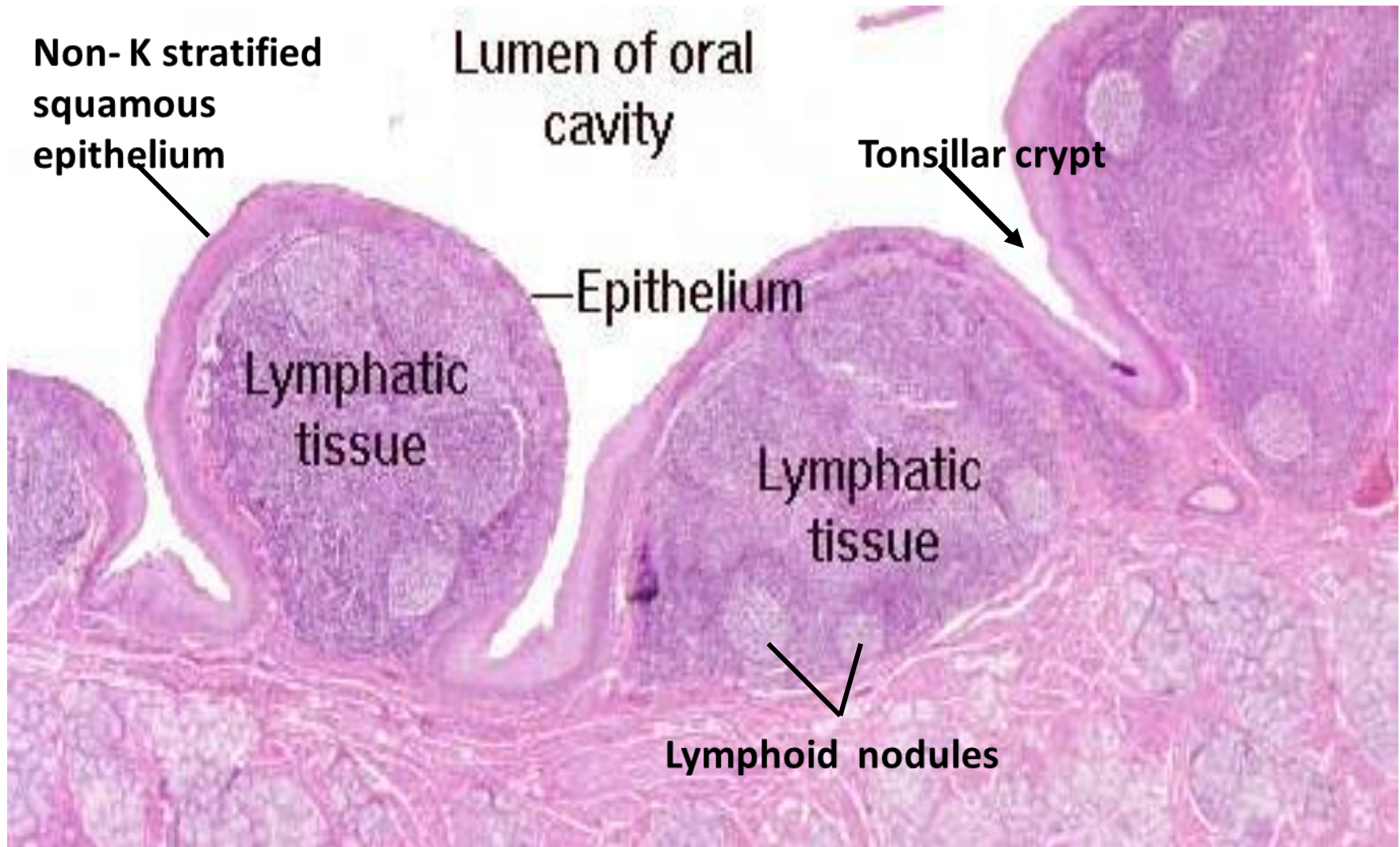


The lining epithelium is cuboidal rather than the usual flat squamous



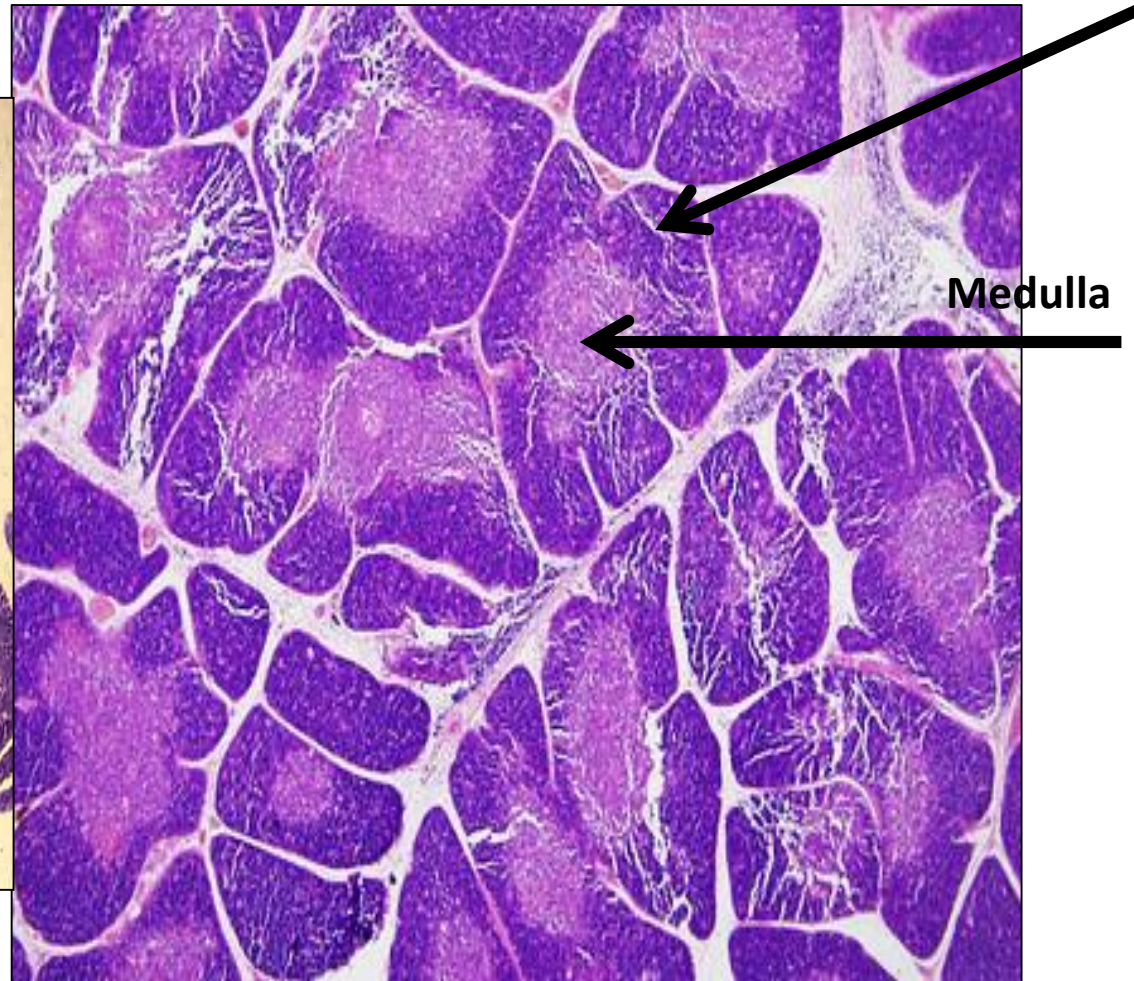
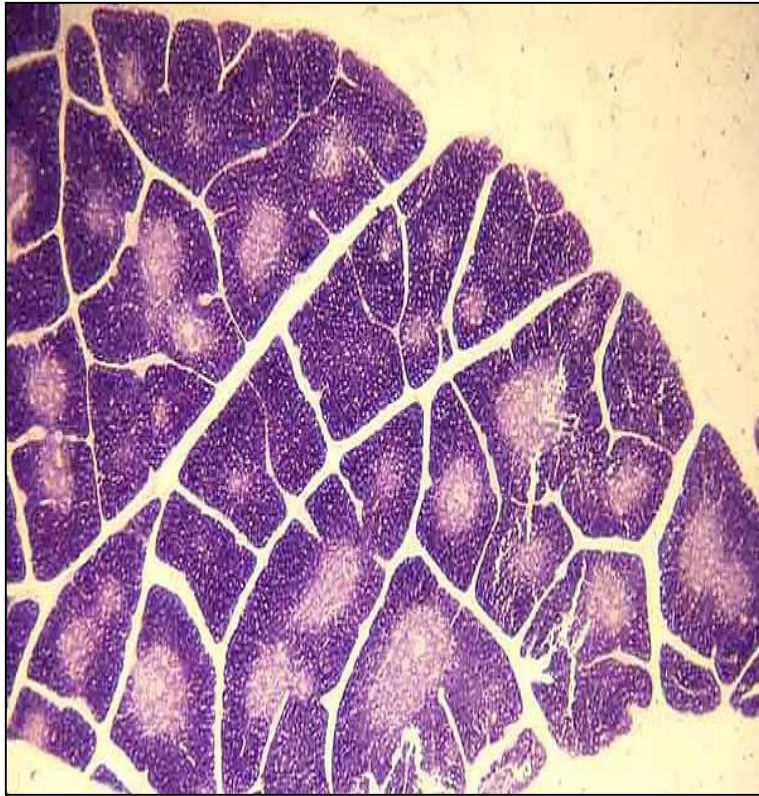
High endothelial venule in a lymph node.  
High endothelial cells (arrowheads).  
The venule is crossed by lymphocytes (arrows).

# Palatine tonsil

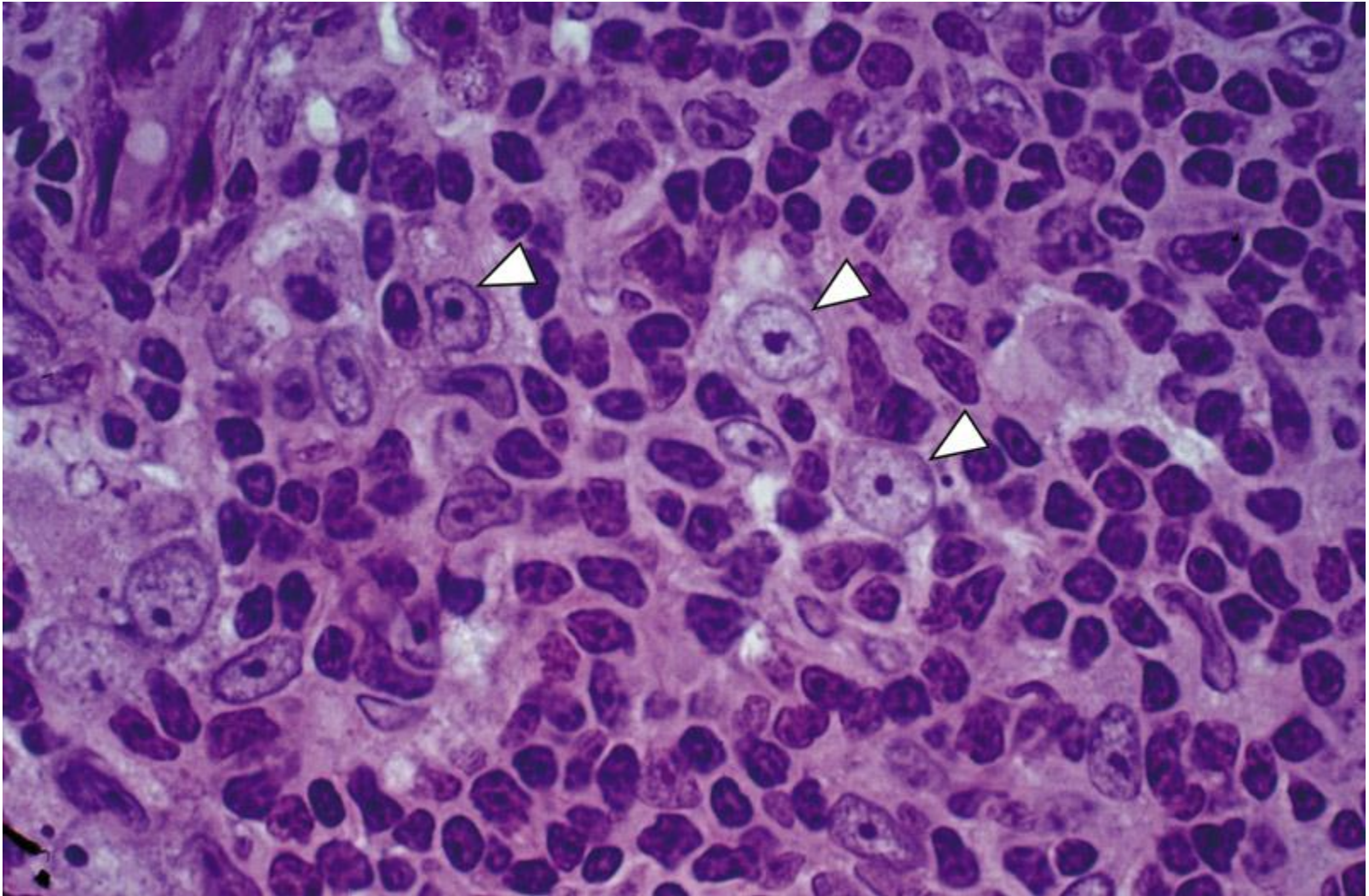




# Thymus gland



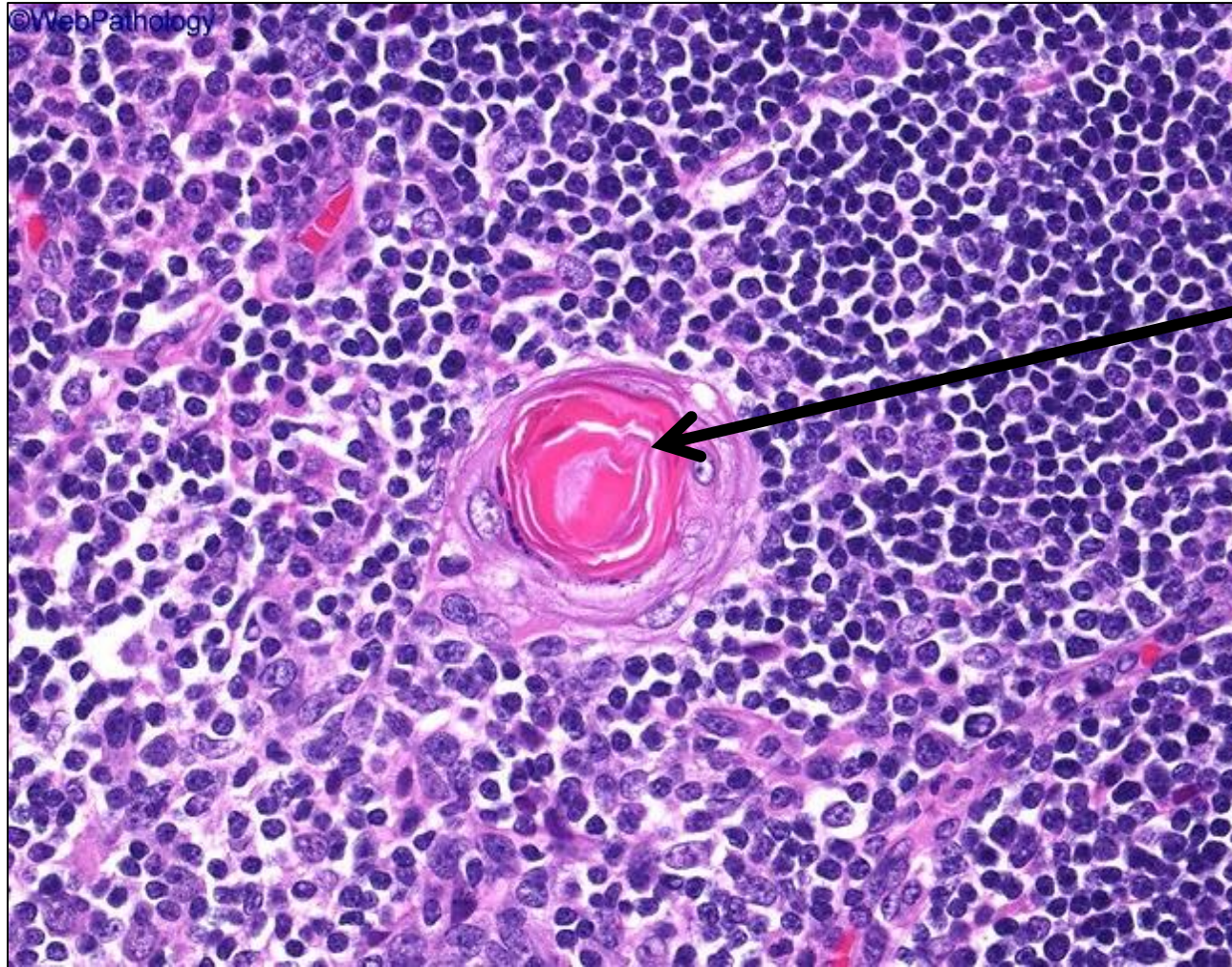




**Cortex:** Epithelial reticular cells (arrowheads) surrounded by dark-stained T lymphocytes.



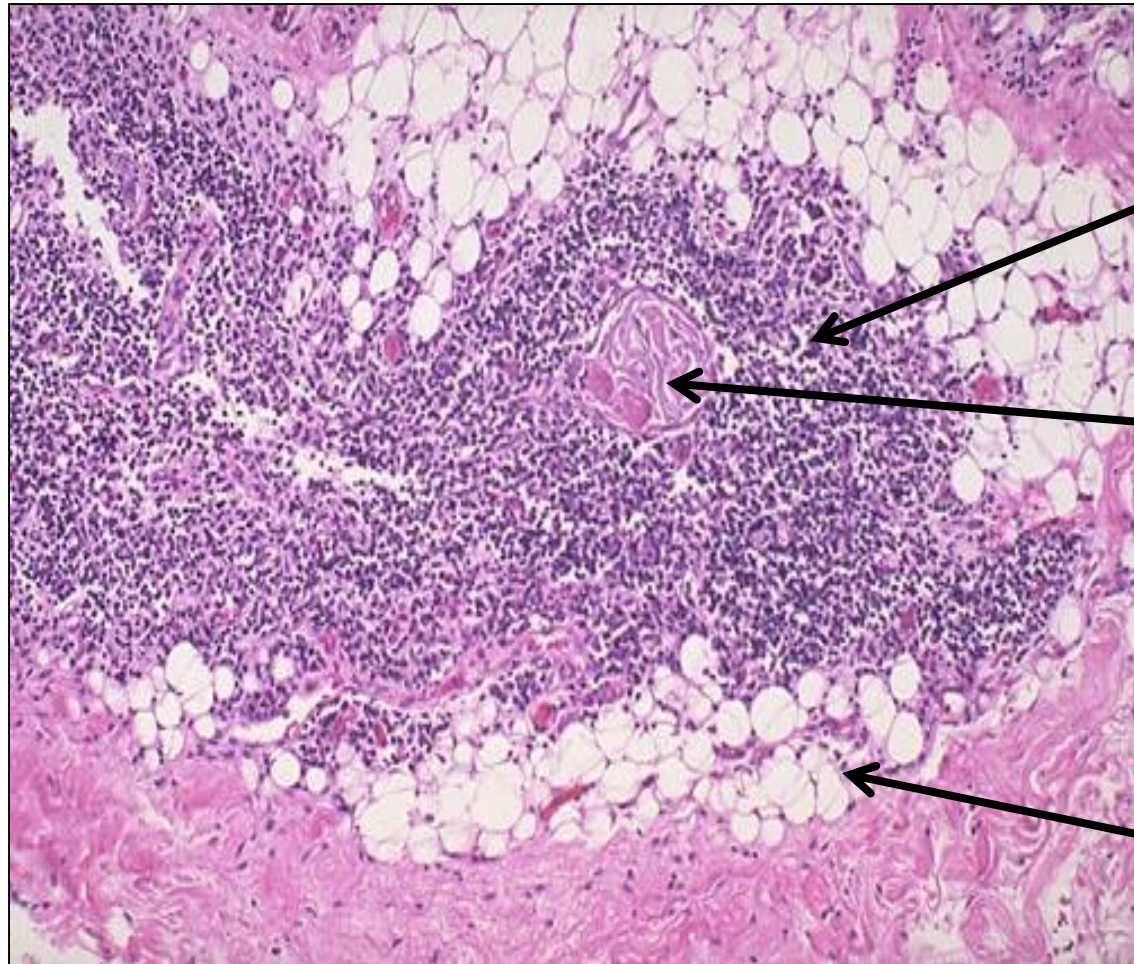
# Thymus/ Hassall's corpuscle



**Acidophilic mass of  
degenerated reticular  
cells ,  
surrounded  
By concentric layers of  
epithelial reticular  
cells**



# Adult thymus (involuting)



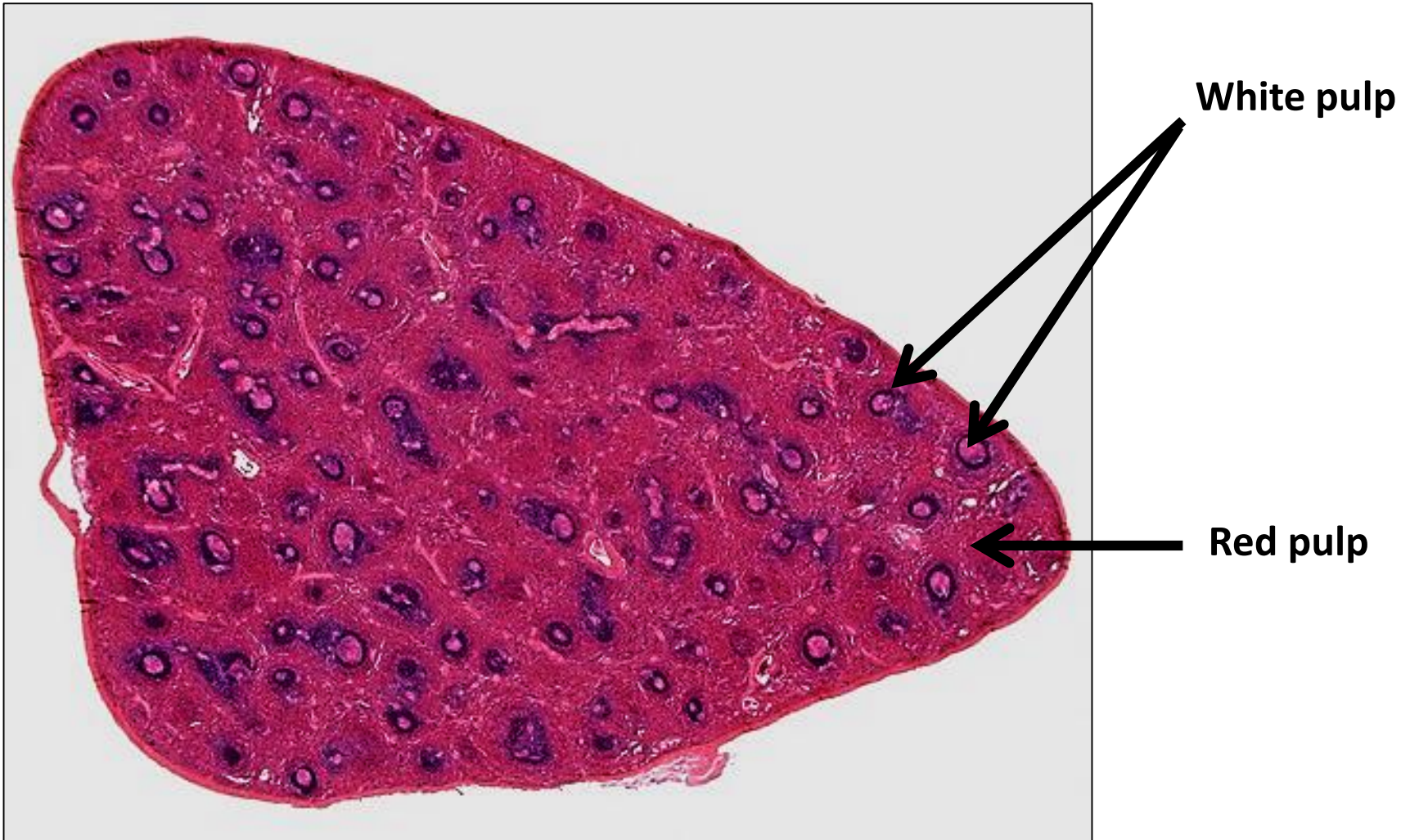
Remnant of thymic  
tissue

Hassall's corpuscles

Fatty tissue

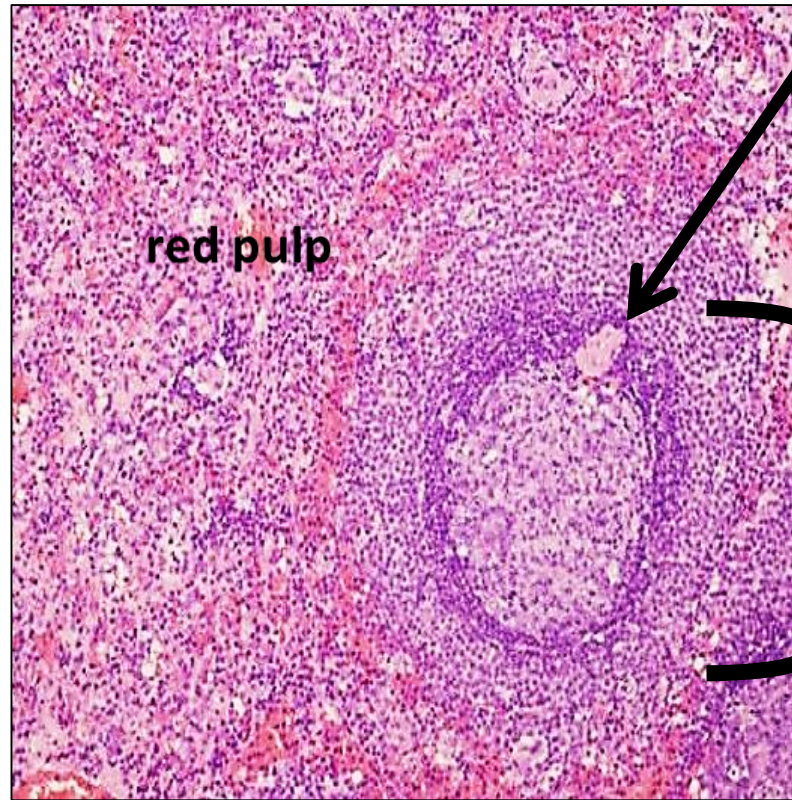
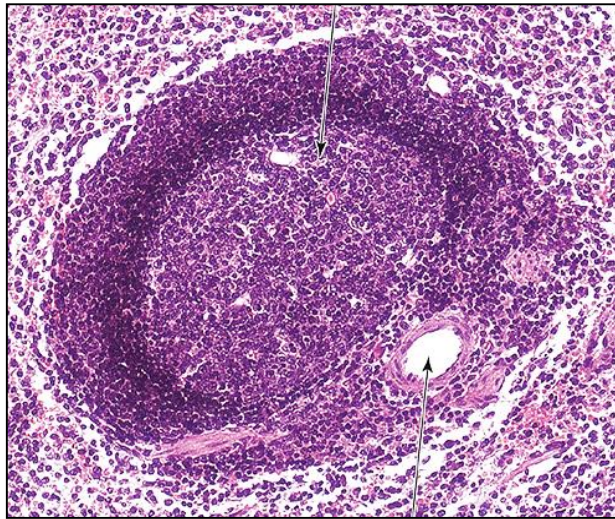


# Spleen showing white & red pulps





# Splenic nodule

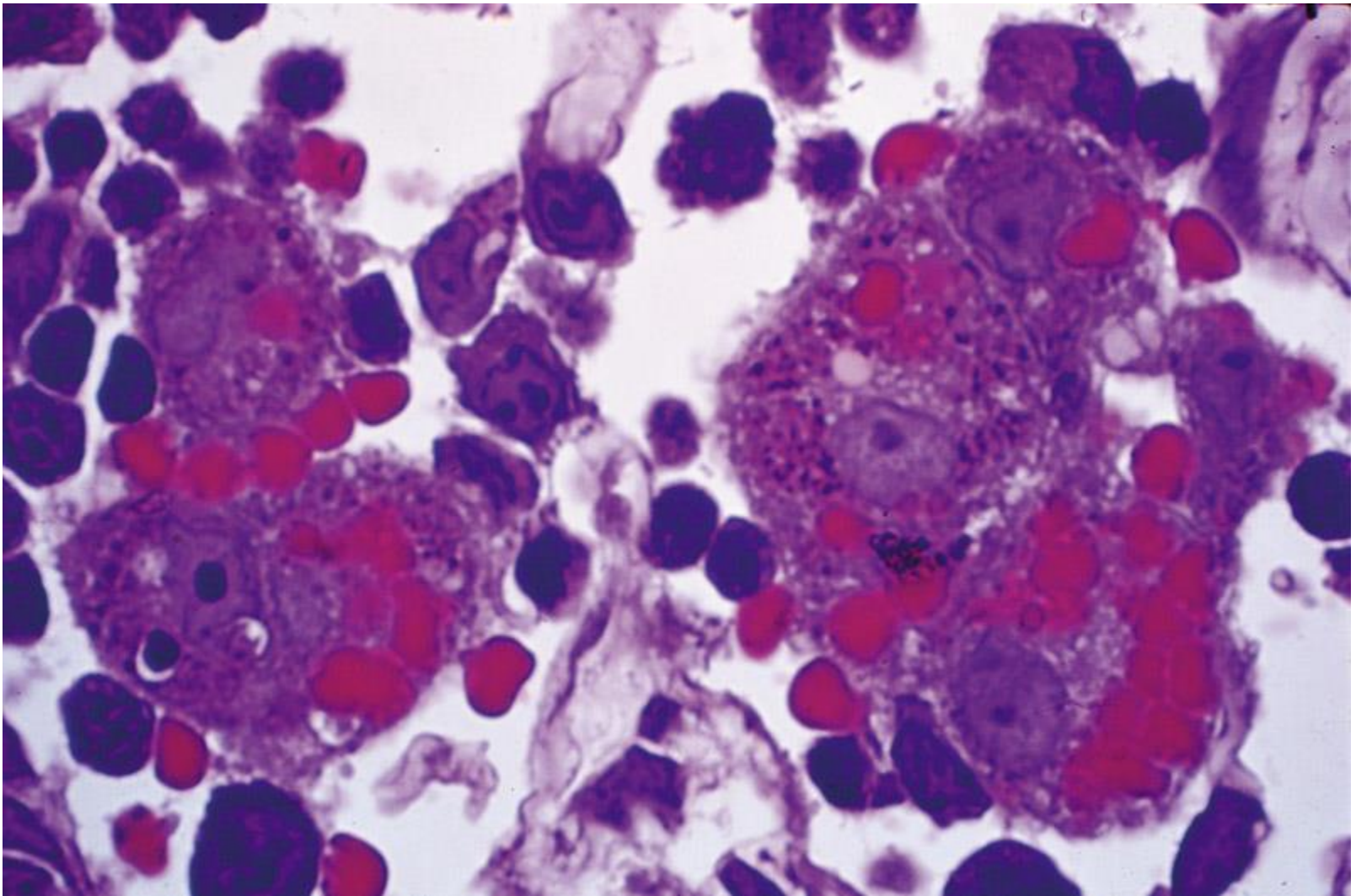


Central arteriole

red pulp

White pulp  
composed of  
lymphoid  
aggregates  
surrounded with  
red pulp

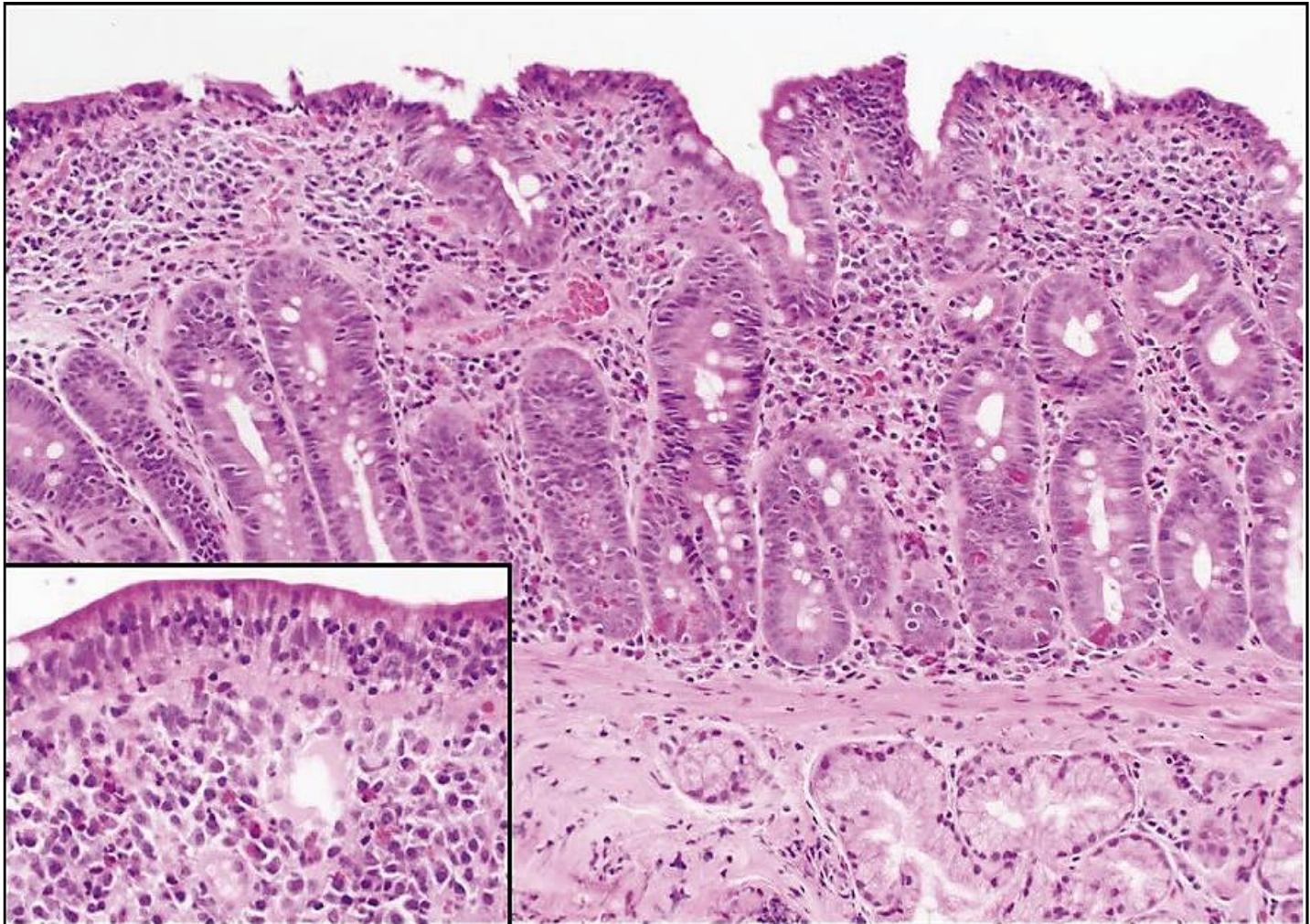




5 spleen macrophages in active phagocytosis of erythrocytes  
in different stages of degradation.

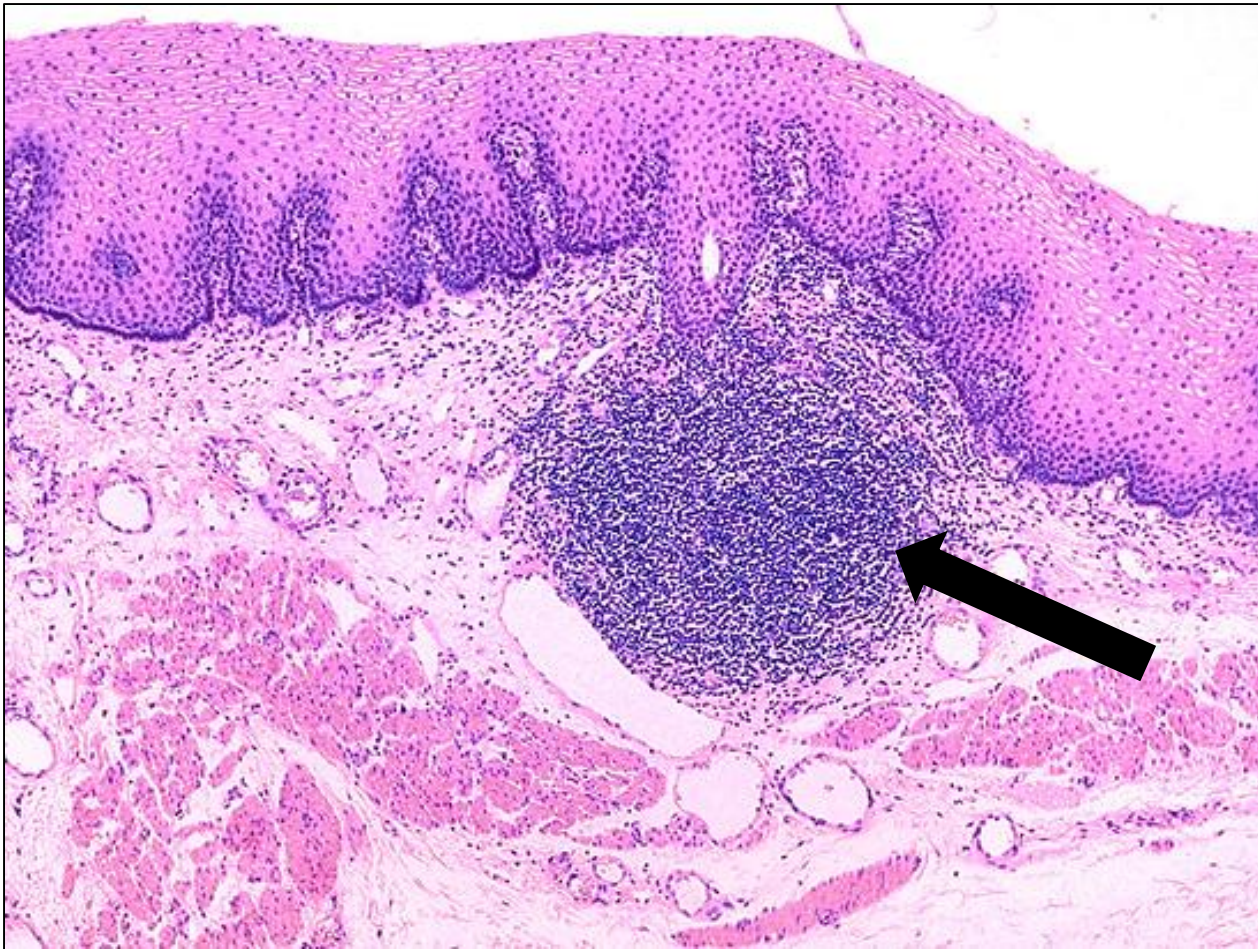


# Gut associated lymphoid tissue/ GALT/ diffuse lymphoid tissue





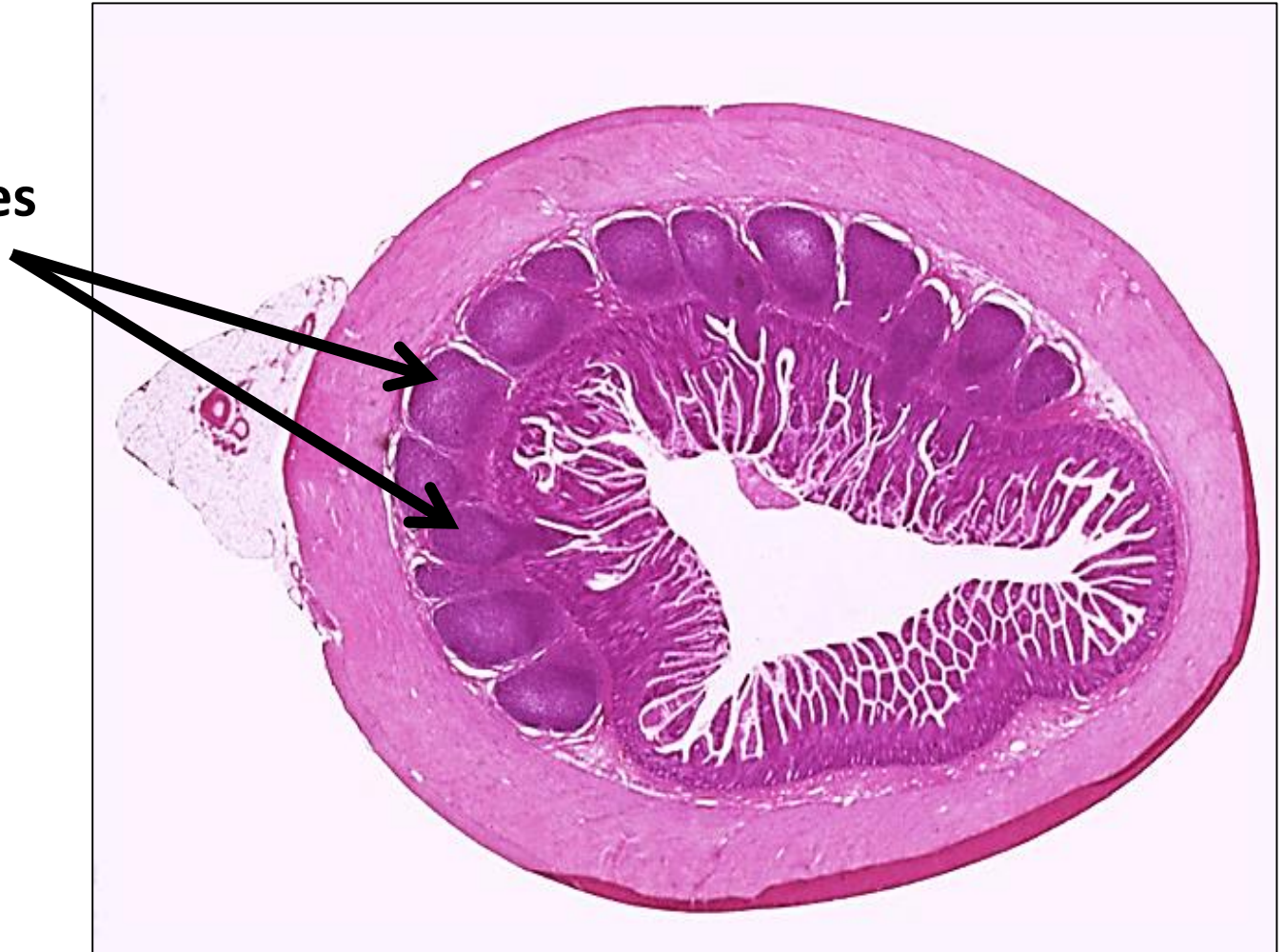
# Esophagus / 1ry lymphatic nodule/ no germinal center





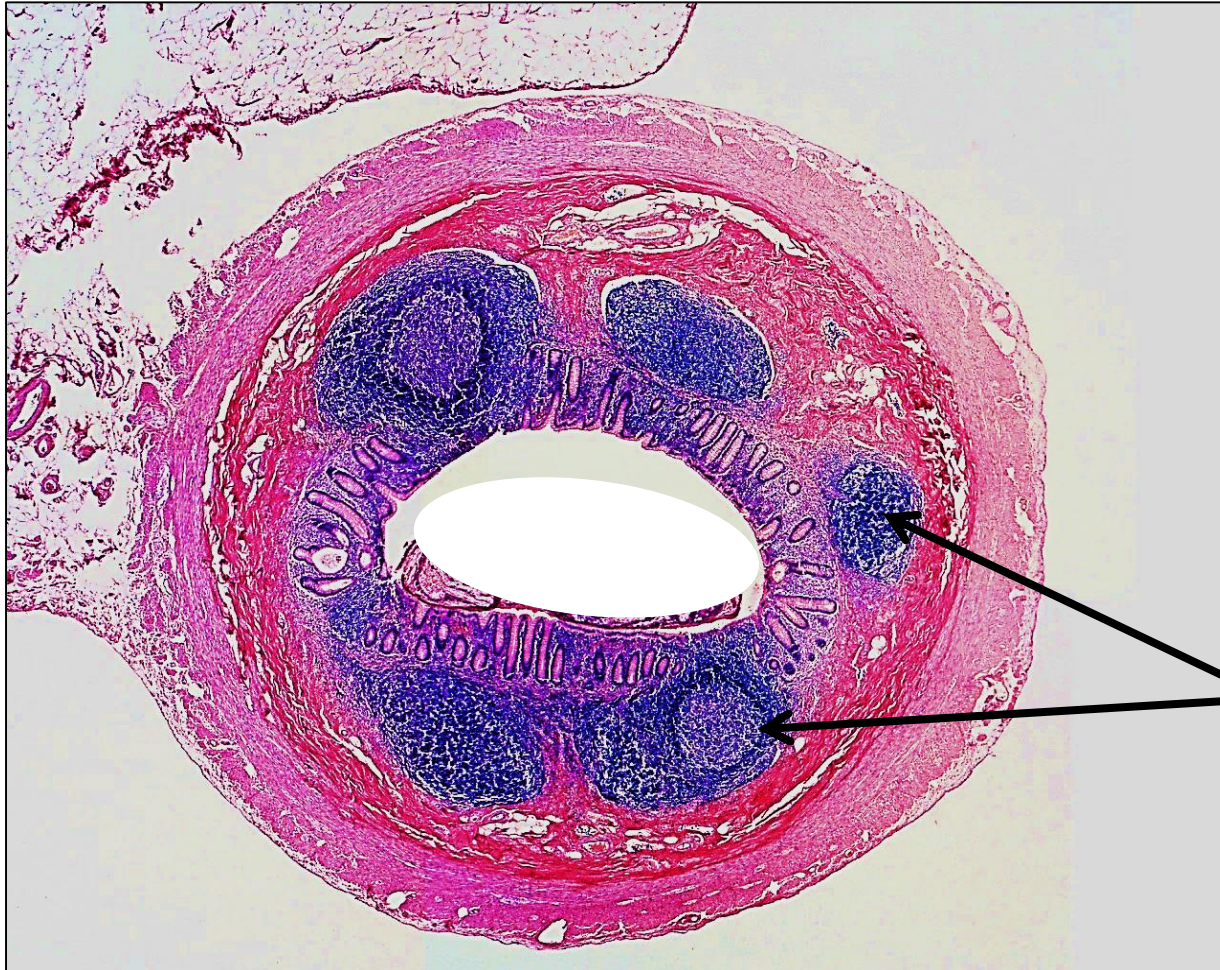
# MALT/ mucosa associated lymphoid tissue/ ileum

Peyer's patches





# MALT/ Appendix



Lymphoid follicles