



One is true ?

A-erect position

B- large bowel dilatation

C- small bowel obstruction and
apperance of haustra

D- obstruction and the x-ray
demonstrate the cause

12:35 PM



زي هاي تقريبا

One is true?

A- gallstone with no evidence of cholecystitis

B-acute calculas cholecystitis

C-acute acalculas cholecystitis

D-chronic calcaulas cholecystitis

12:35 PM



هذول الصورتين مع بعض

One is false?

A- target sign

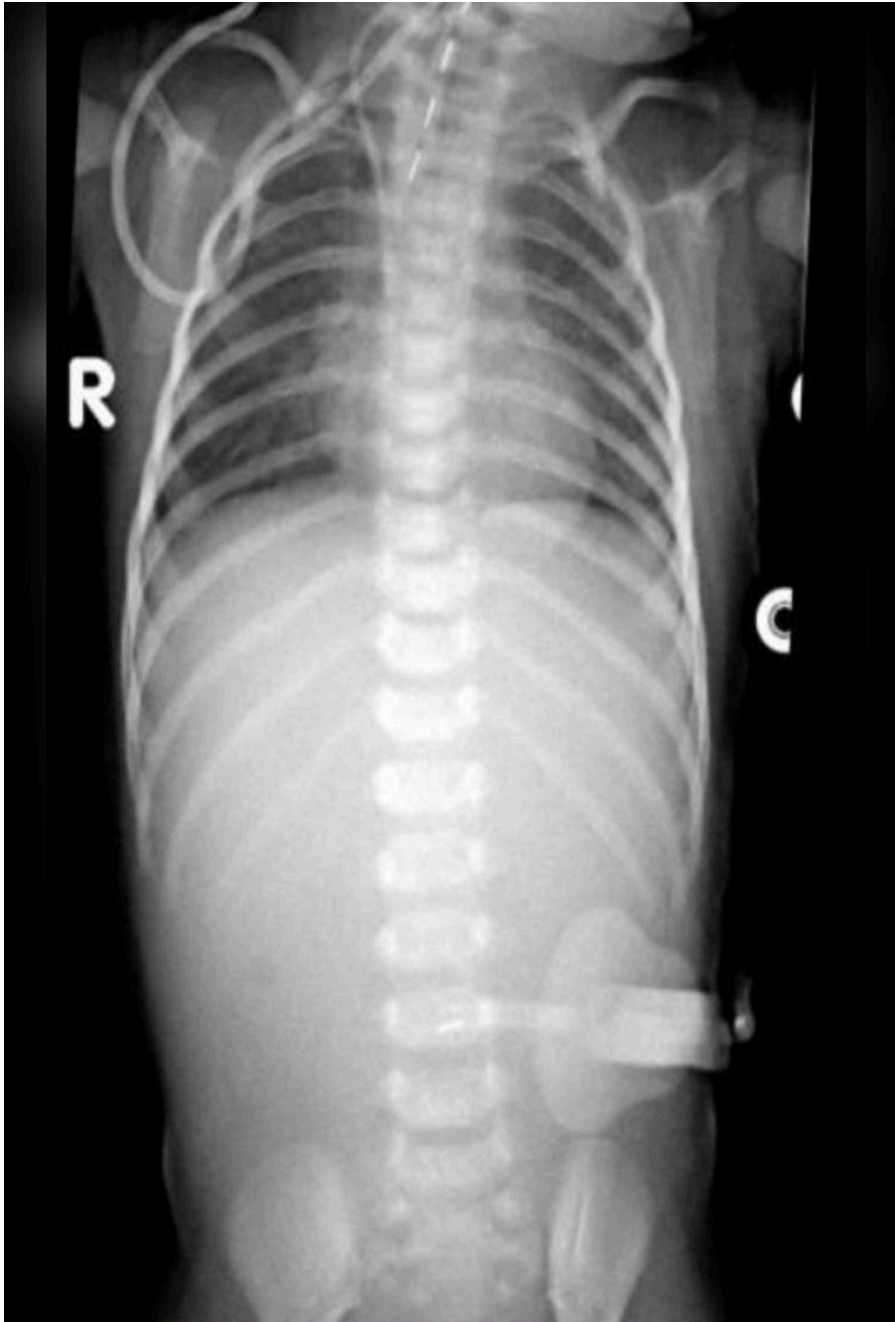
B- claws sign

C- riglers sign

D- no apple core sign

E- coil spring sign

12:35 PM



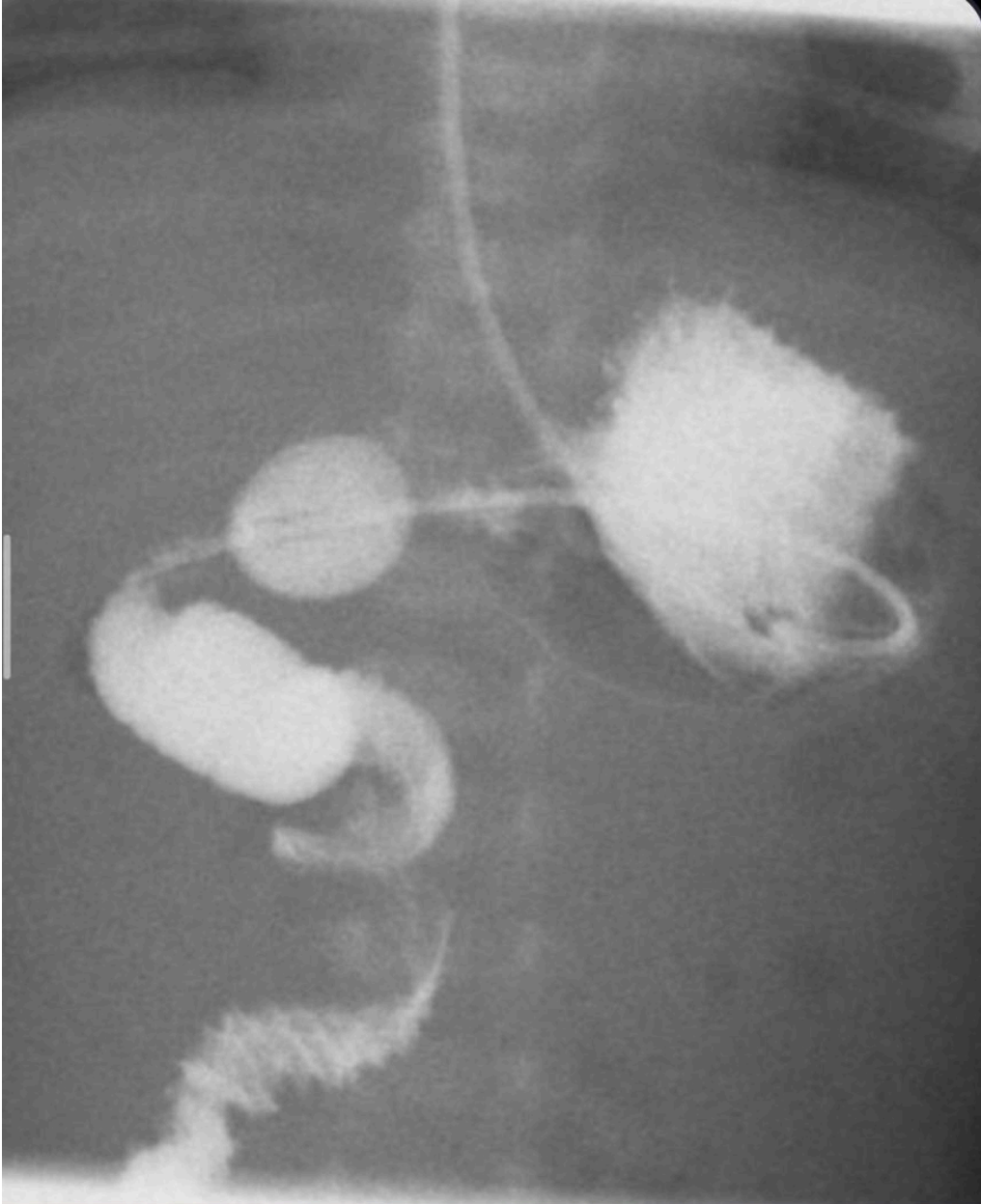
One is true?

A-normal

B- atresia with fistula

C- atresia without fistula

12:35 PM

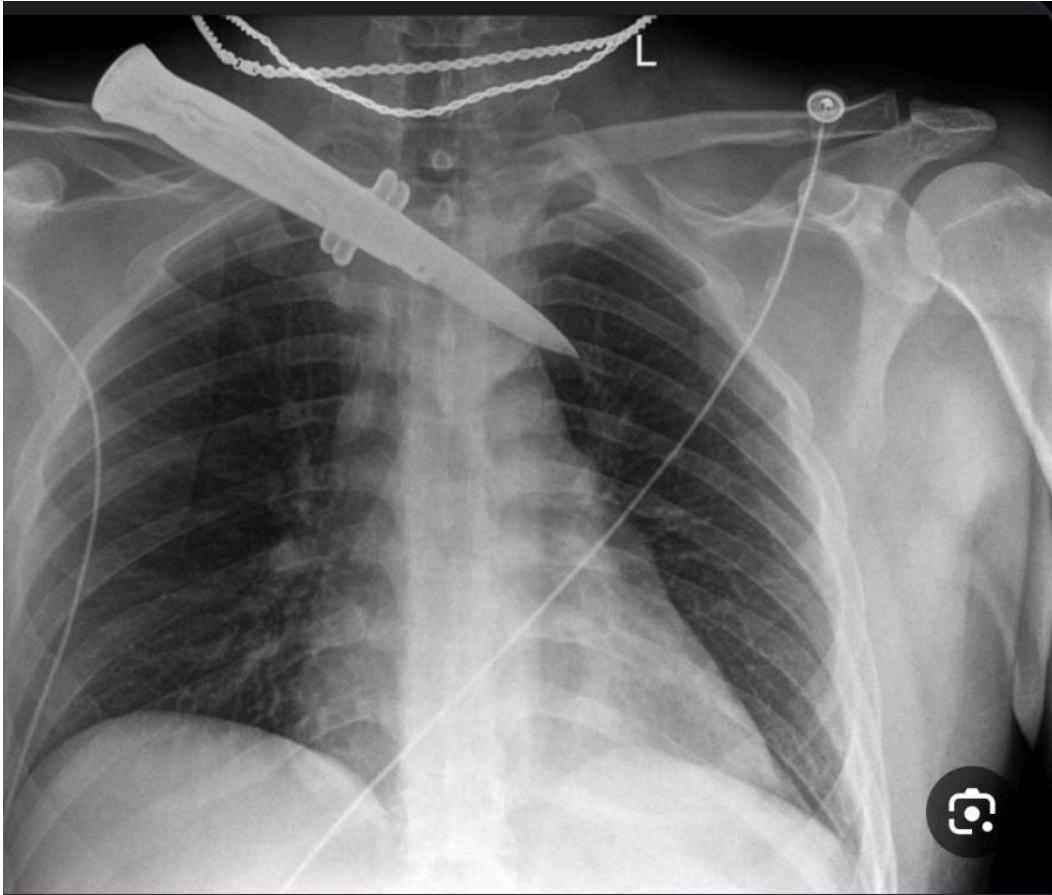


One is false ?

A- lead to ischemic if not treated surgically

B-first presentation in first 48 hours of life

12:35 PM



About this picture one is true?

A- pneumothorax

B- hemothorax

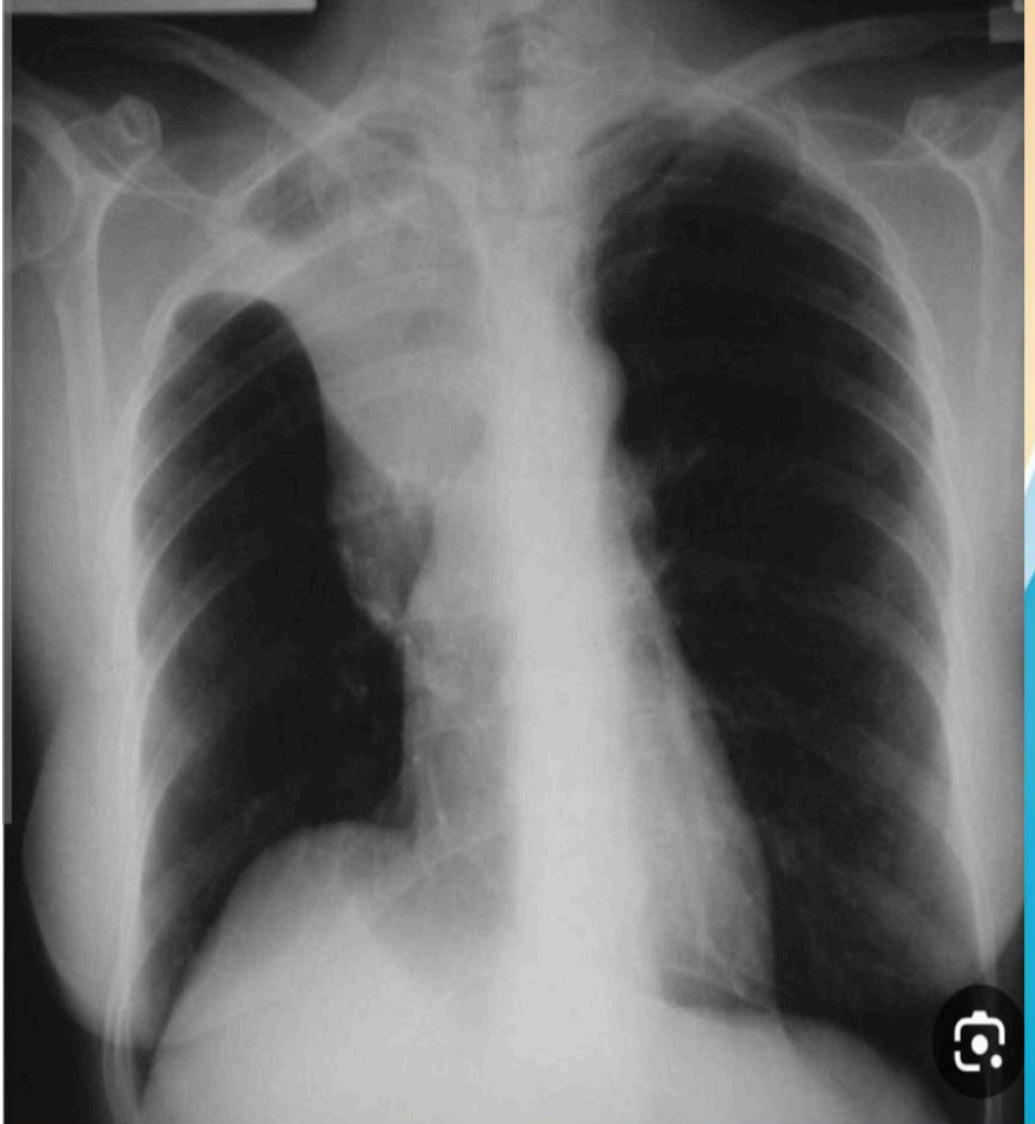
C-normal

كان معها صورتين

edited 12:35 PM

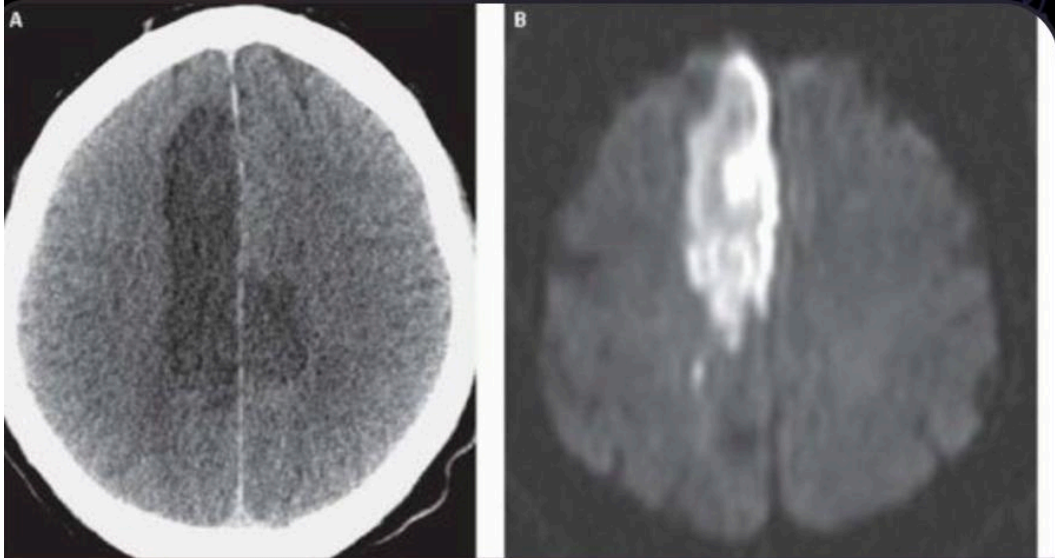


One of the following is false?
A- rt pulmonary thrombus
B- lt pulmonary thrombus
C- pulmonary trunk thrombus
D- aspirin is enough for treat



About this picture one is true?
Rt upper collaps

12:35 PM



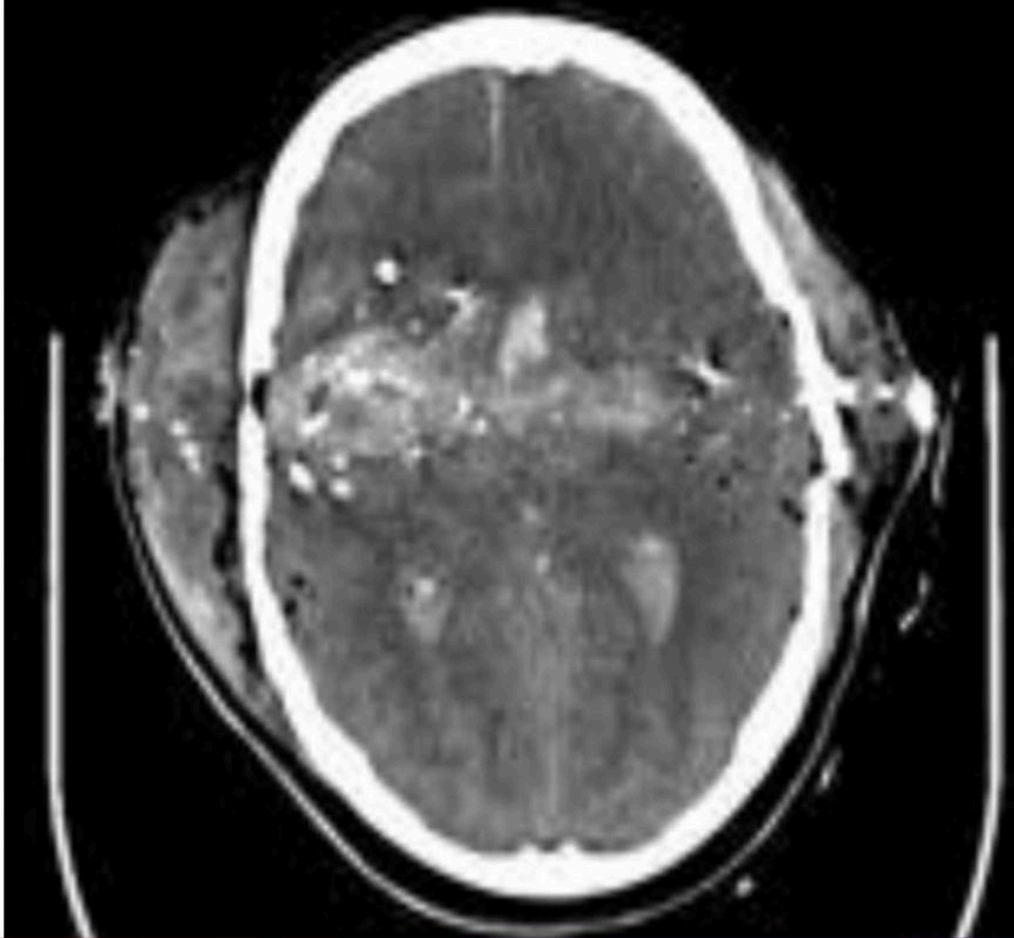
About this picture one is true?
Acute ACA infarction

12:35 PM



True match ?
D lentiform

12:35 PM



One of the following is false?

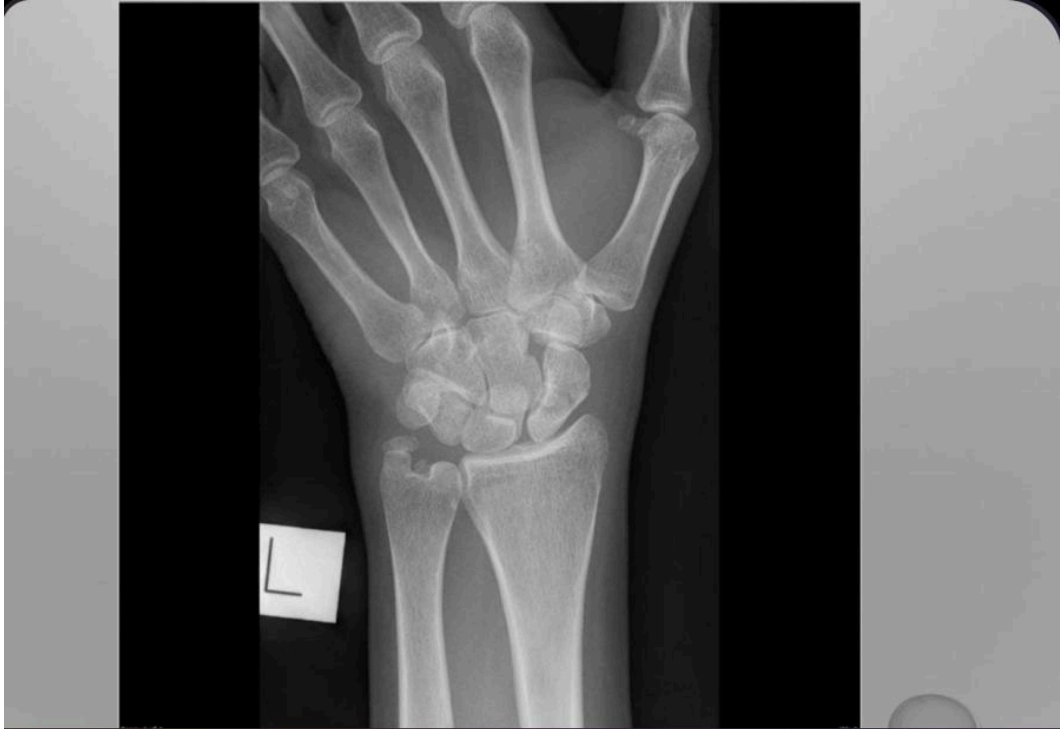
A-bilateral subglial hematoma

B-bilateral bone fracture and
fragmenation

C- there is no pneumocephalus

D-interventricular hemorrhage

12:35 PM



About this picture one is true?

- A- no fracture
- B- distal radius fracture
- C- distal ulnar fracture
- D- scaphoid fracture
- E- metacarpal fracture

12:35 PM



About this picture one is true?

- A- no fracture
- B- distal radius fracture
- C- distal ulnar fracture
- D- scaphoid fracture
- E- metacarpal fracture

12:35 PM

