



Male

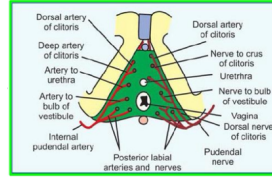
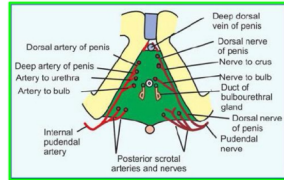


Female



◆ 1. Structures Piercing the Perineal Membrane

- * Membranous urethra
- * Ducts of bulbourethral glands
- * Artery of the urethra
- * Artery of the bulb (of penis)
- * Deep artery of the penis
- * Dorsal artery of the penis
- * Dorsal nerve of the penis



- * Urethra
- * Vagina (posterior to urethra)
- * Artery of the urethra
- * Artery of the bulb (vestibule)
- * Deep artery of the clitoris
- * Dorsal artery of the clitoris
- * Dorsal nerve of the clitoris

◆ 2. Superficial Perineal Pouch Contents

A. Root of Penis

- * Bulb of penis (corpus spongiosum)
- * Right & left crura (corpora cavernosa)
- * Penile urethra (inside bulb)

B. Muscles

- * Superficial transverse perineal muscles
- * Bulbospongiosus muscle
- * Ischiocavernosus muscle

C. Blood Vessels

- * Posterior scrotal artery
- * Deep artery of penis
- * Dorsal artery of penis
- * Artery of bulb of penis

D. Nerves

- * Posterior scrotal nerve (from perineal branch of pudendal nerve)
- * Dorsal nerve of penis

A. External Genital Structures

- * Root of clitoris (crura + bulbs of vestibule)
- * Vestibule of vagina
- * Greater vestibular glands

B. Muscles

- * Superficial transverse perineal muscles
- * Bulbospongiosus muscle
- * Ischiocavernosus muscle

C. Blood Vessels

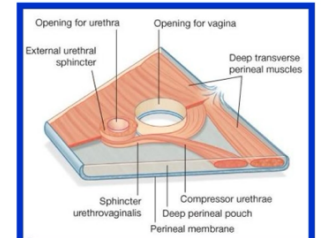
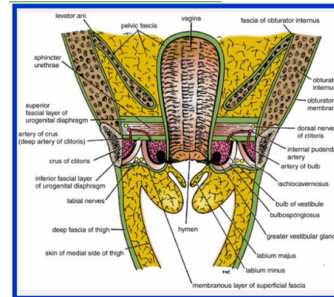
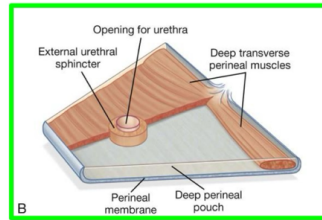
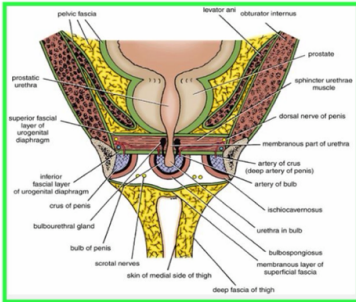
- * Posterior labial artery
- * Artery of vestibule of vagina
- * Deep artery of clitoris
- * Dorsal artery of clitoris

D. Nerves

- * Posterior labial nerve
- * Dorsal nerve of clitoris

◆ 3. Deep Perineal Pouch Contents

- * Membranous urethra
- * Sphincter urethrae muscle
- * Bulbourethral glands
- * Deep transverse perineal muscles
- * Internal pudendal vessels & branches
- * Dorsal nerve of penis
- * Urethra (anterior)
- * Vagina (posterior to urethra)
- * Sphincter urethrae (pierced by urethra & vagina)
- * Deep transverse perineal muscles
- * Internal pudendal vessels & branches
- * Dorsal nerve of clitoris



◆ 4. Perineal Body (Important Attachments)

- * Located between anal canal & bulb of penis
- * Located between anal canal & lower vagina

◆ Muscles attached (same in both) ♂ ♀

- * External anal sphincter
- * Sphincter urethrae
- * Superficial transverse perineal muscles (R & L)
- * Deep transverse perineal muscles (R & L)
- * Levator ani (anterior fibers)
- * Bulbospongiosus

◆ 5. Important Clinical Note (Applies to Both)

- * Rupture of urethra → urine extravasation into superficial perineal pouch
- * Spread:
 - * Anterior abdominal wall
 - * Scrotum (male) / labia (female)
 - * Front of thigh (limited by fascia attachment)