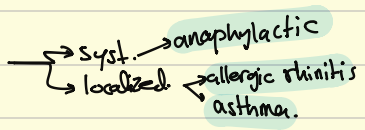


Hypersensitivity of \rightarrow Allergic disorders.

\downarrow autoimmunity

I
immediate
"allergy"



ag \rightarrow Th2 \rightarrow plasma cell \rightarrow IgE

Allergen
pollen
pet dander
Food

IgE

H1s

Symptoms

mild \rightarrow severe

II
cytotoxic

IgG / IgM \leftrightarrow ag \rightarrow cell \Rightarrow complement system

ex. \rightarrow Transfusion reaction
hemolytic dis.

\therefore direct damage
to cell surface

III

3-16 hrs

ICM immune complex mediated

ags \rightarrow exogenous / endogenous.

ex. \rightarrow serum sickness

IV

Delayed / cell mediated

T-lymphocyte not ab!

ex. \rightarrow mycobact. Tb.

Allergic Rhinitis → nasal congestion

Rhinorrhoea

itching

+

sneezing

conjunct. infl.

Intermittent (acute)

< 4 days / week ^{Per} < 4 consecutive weeks

persistent (chronic)

>

المزم ما بين تأثيره ولا التأثير الحاد
* mild → mod → severe . بتأثيره

sequela

○ elongated face

shiners saluti

ω septal deviation

polyps hyponasality

turbinate hypertrophy

○ adduction of oropharynx

◁▷ wheezing

Ⓟ skin testing

Nasal smear

In vitro testing → Serum IgE level.

✓ anti-histamine cetirizine

anti-cholinergic ipratropium

Decongestant xylometazoline

mast cell stabilizer Na cromoglycate

oo wheals
red halo.

Urticaria / Anjoedema.

hives

vascular reaction

* pruritis *

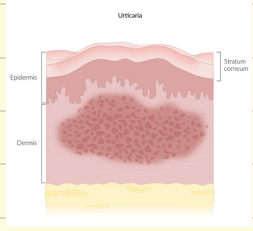
upper dermis swelling

تقرین
بواسیر
عنف
↓

not pruritic

* swelling *

deep dermis + SC.



acute

new onset
< 6w

Chronic. recurrent > 6w.

* Idiopathic 50%

Physical →
dermatographism (rubbed)
Cholinergic → heat/emotion

drugs → NSAIDs
sulphonamide
Penicilin

* IgE med food allergy.

over hrs < 12hr.

Clinical Dx.

* anti histamin

1st
2nd

* epinephrine IM
rare.

* Cyclosporine.
chronic.

HAE

Hereditary angioedema.

AD.

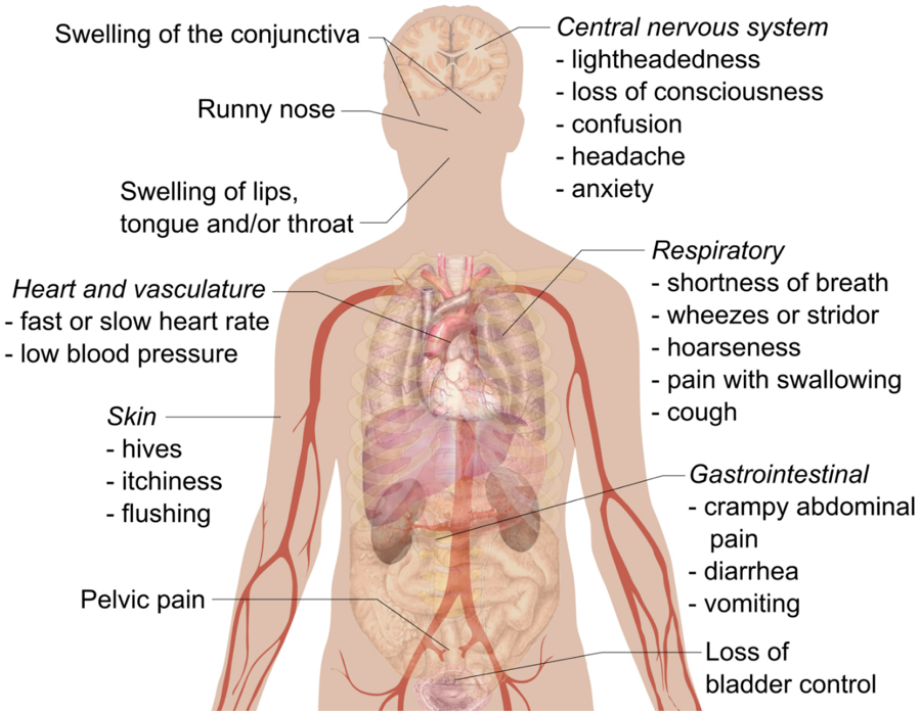
↓ C1-esterase ↓

- ① ↓ production
- ② dysfunctional

Cy ↓

✓ → bradykinin.

Signs and symptoms of Anaphylaxis



Criteria:-

Mins → hrs

- ① acute onset illness + skin on.m + ≥ 1 →
 - Resp. compromise
 - BP↓ + symp. of EoD
- ② ≥ 2 rapidly after allergen exposure.
 - Resp. compromise
 - BP↓ + symp. of EoD
 - persistent GI symp.

Chronic
relapsing
infancy/childhood →

Atopic dermatitis

exclusive breast feed
↓ incidence (Family Hx)
عائلا

- pruritis -
- severely dry skin -

* asthma

allergic rhinitis -

AD.

infant

ill defined

edematous
papules & vesicles

childhood:

→ drier

scalp face

الوجه ← Extensor

flexors

neck.

Infra orbital
(Morgan lines)

⊙ RASTs

• radioallergo sorbent test

blood test

Eosinophilia ↑ IgE.

• skin prick/scratch test.

upper back ← الظهر

Forearm ← الذراع

↓ calcineurin ↓