



Archive Wateen -Surgery
6th year
5/5/2026

Done by ; Salsabeel Aldahamsheh



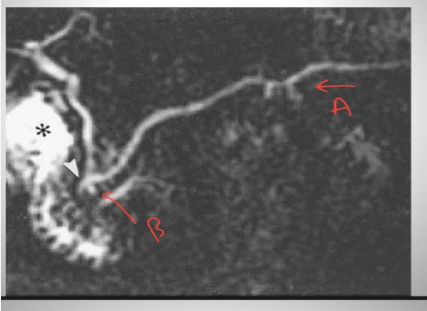


- Thyroglossal duct : 13yo pt came with neck mass dx
- surgical management?
- pathophysiology behind it?
- 2 complications of it?
- most common thyroid Cancer that develop from it?



- Pancreatic divisim: 35 y pt with episodic attacks of epigastric pain +wt loss +vomiting
- dx?
- type of scan in the pic?
- pathophysiology?
- 2 ducts names?

MRCP of pancreas divisum

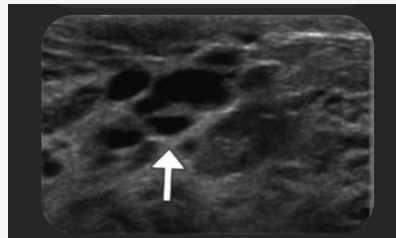
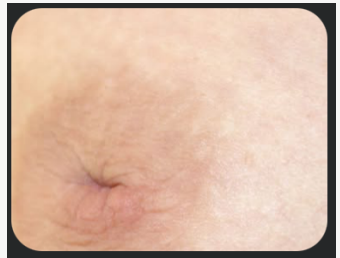




- air under diaphragm pic ,70 y old female pt with sudden epigastric pain
- dx?
- 3 findings on physical examination?
- suggestive surgical treatment ?



- 47 y old female with right sided nipple retraction and discharge
- BIRADS 2+US preductal dilatation of ducts
- dx?
- 2 characteristics of discharge?
- type of cell predominately in ducts?
- what nipple retraction characteristic suggests non malignant cause ?
- daily habit ass with it ?





- dx?
- main cause of death ?
- most common ass congenital anomaly ?
- Is the surgery immediate and why ?



- diabetic foot ulcer
- name of classification and what the stage (acc to the pic) ?
- deformity name in X-ray?
- surgical management for it ?

