

Neuroanatomy practical 7

Dr. Rasha Abdelaziz Abdellatif

**Associate professor of human anatomy and
Embryology**

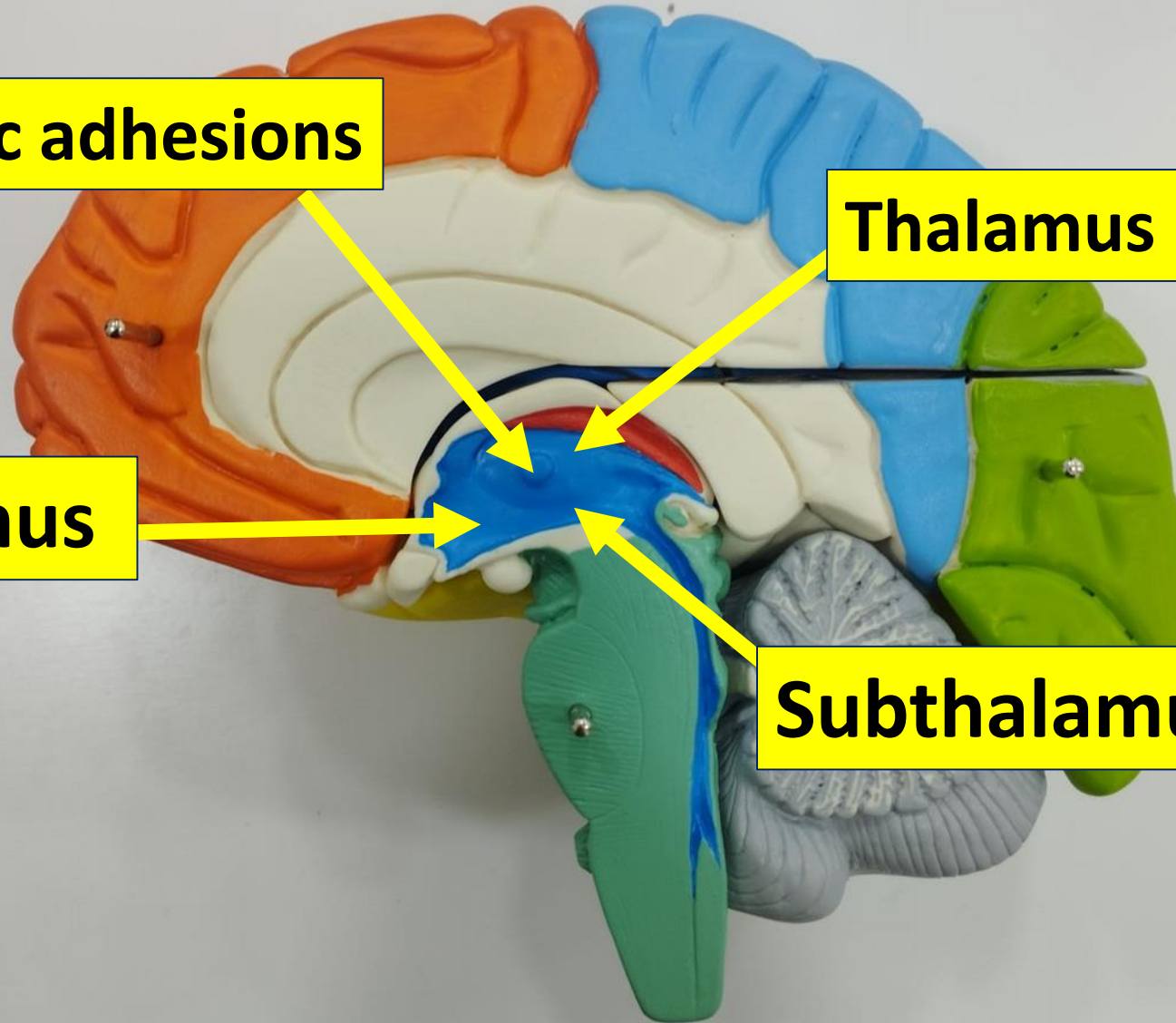
Diencephaon

Interthalamic adhesions

Thalamus

Hypothalamus

Subthalamus

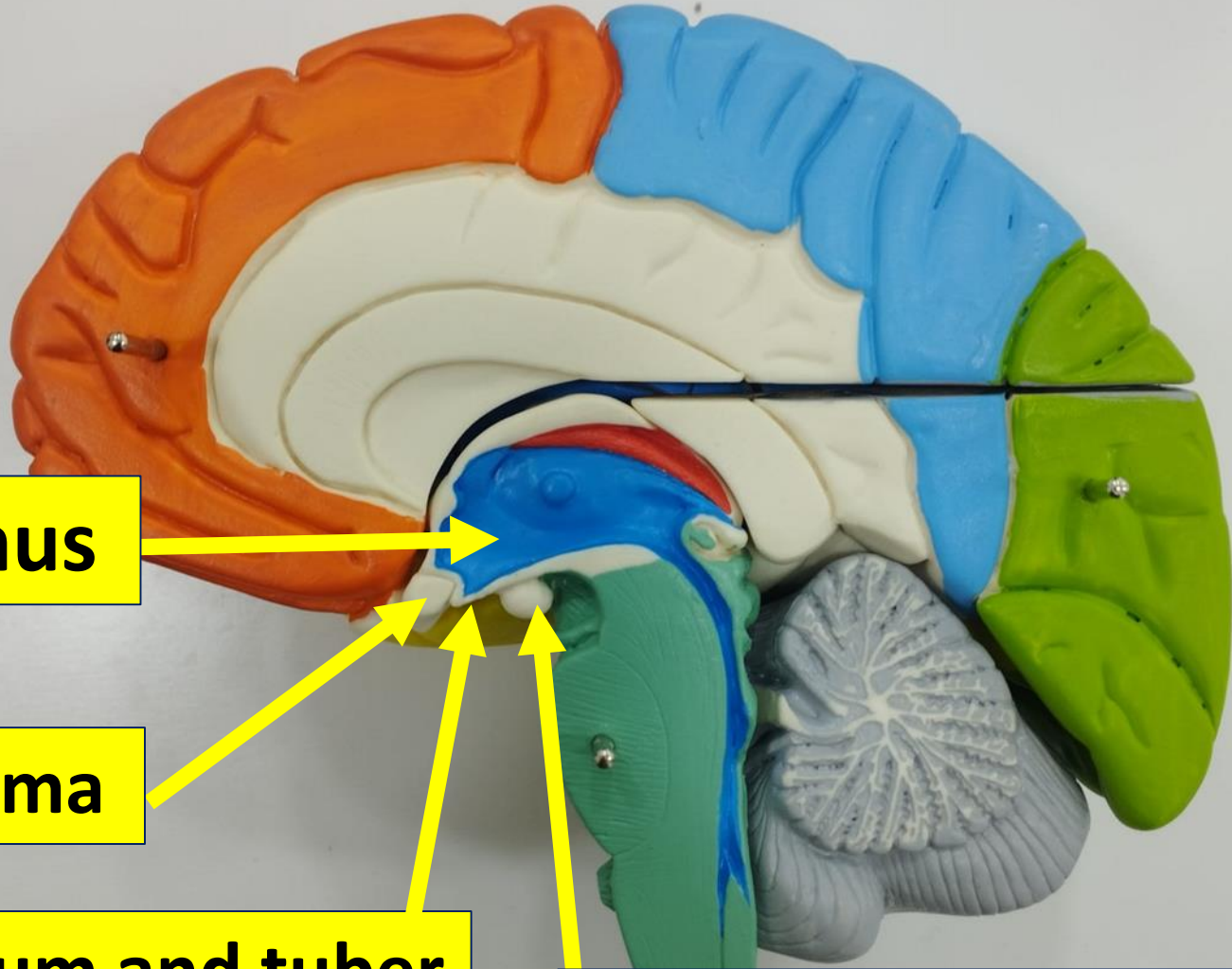


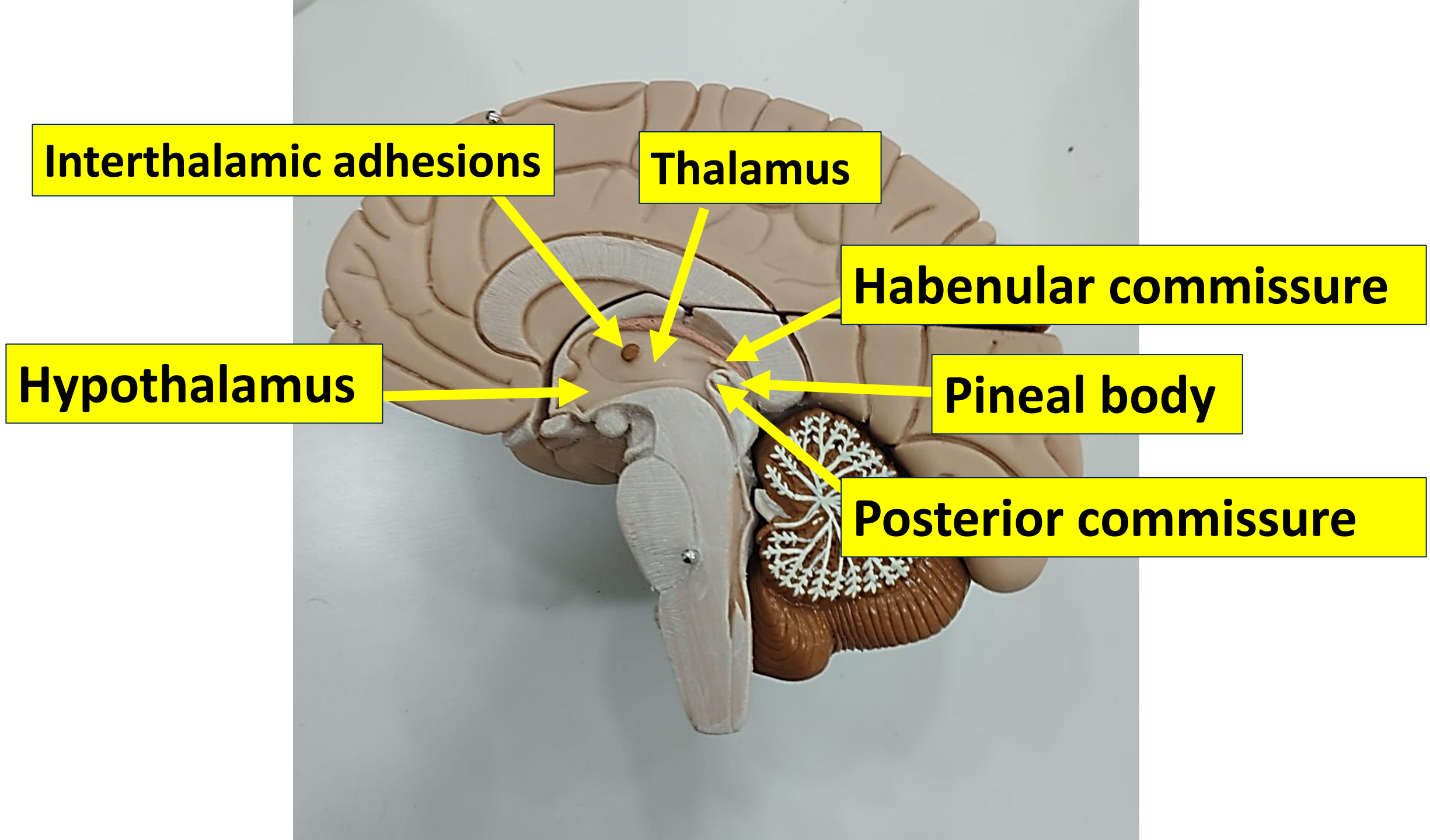
Hypothalamus

Optic chiasma

Infundibulum and tuber cinereum

Mamillary body





Interthalamic adhesions

Thalamus

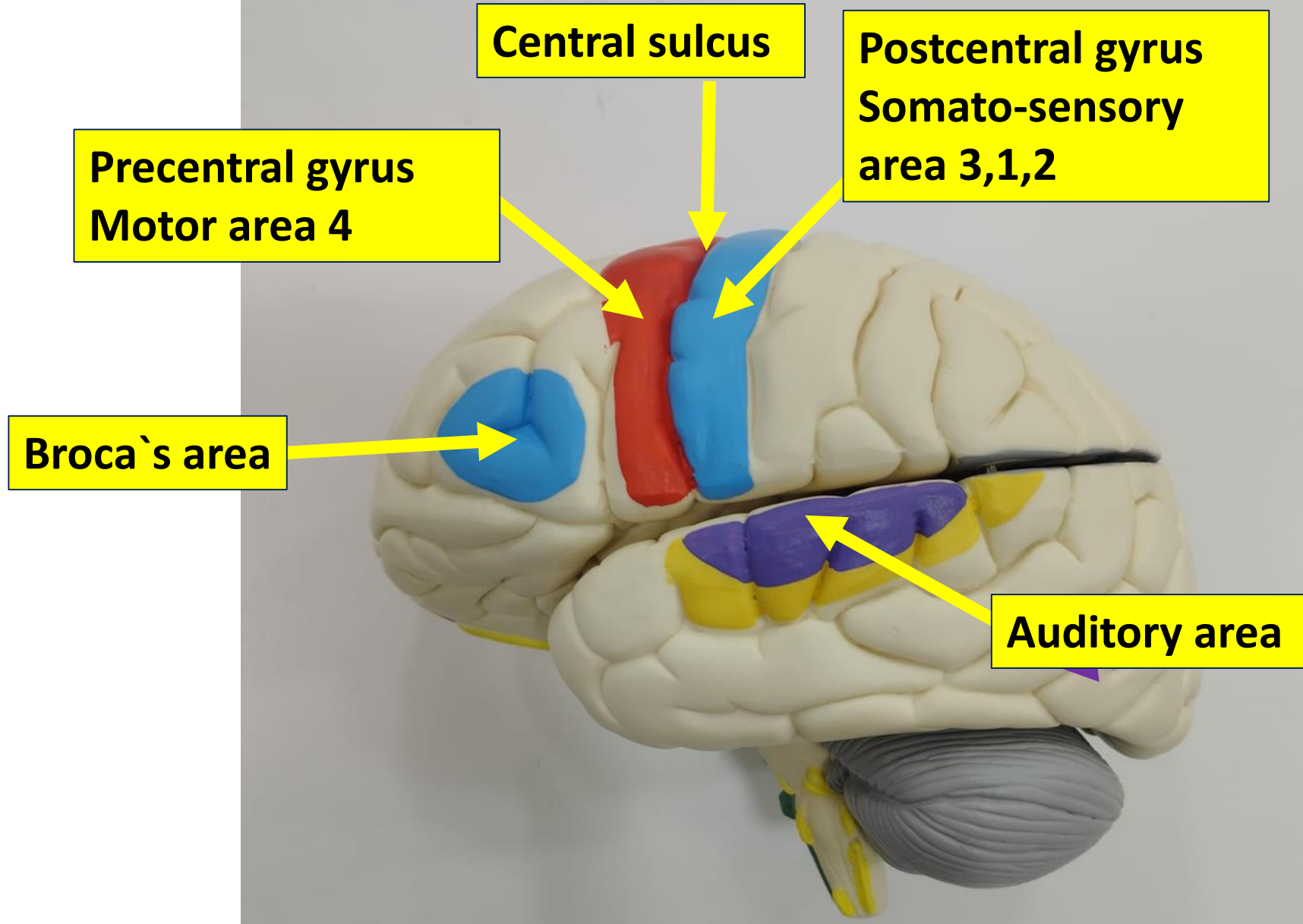
Habenular commissure

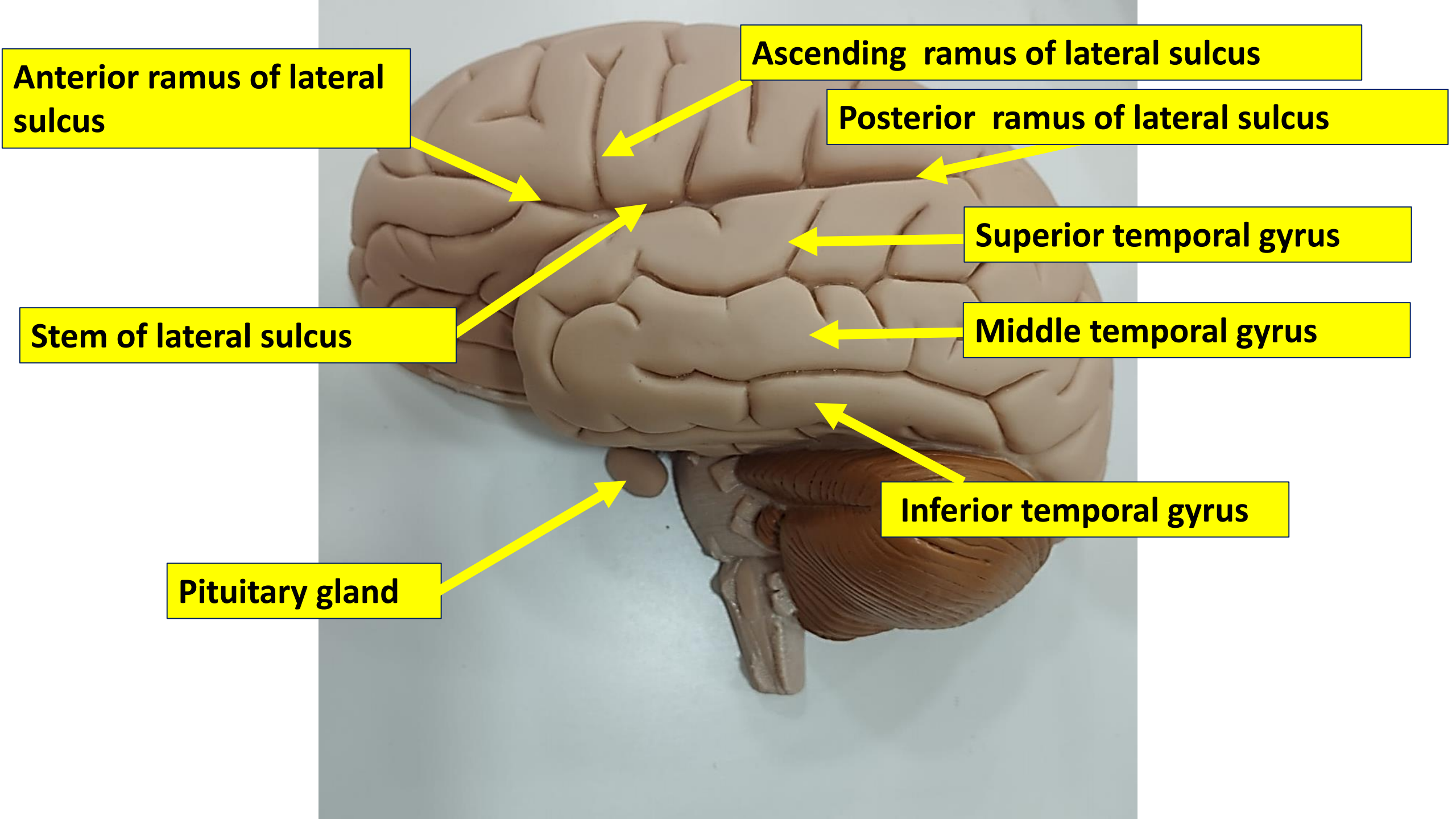
Hypothalamus

Pineal body

Posterior commissure

Cerebral cortex





Anterior ramus of lateral sulcus

Ascending ramus of lateral sulcus

Posterior ramus of lateral sulcus

Superior temporal gyrus

Stem of lateral sulcus

Middle temporal gyrus

Pituitary gland

Inferior temporal gyrus

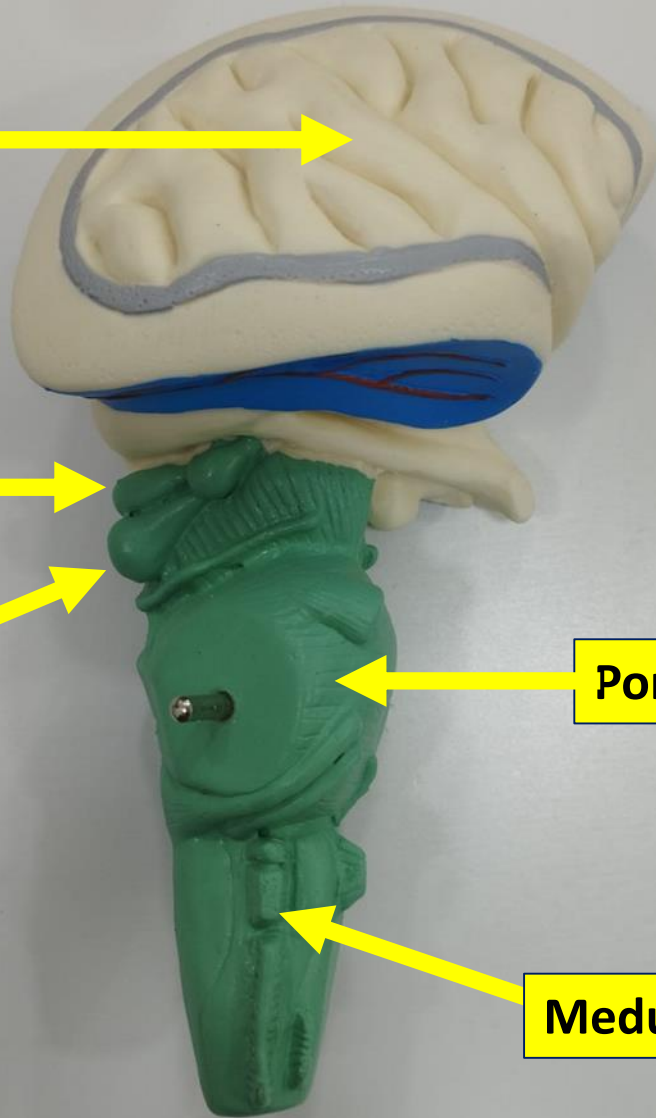
Cortex of insula

Superior colliculus

Inferior colliculus

Pons

Medulla oblongata



Cingulate sulcus

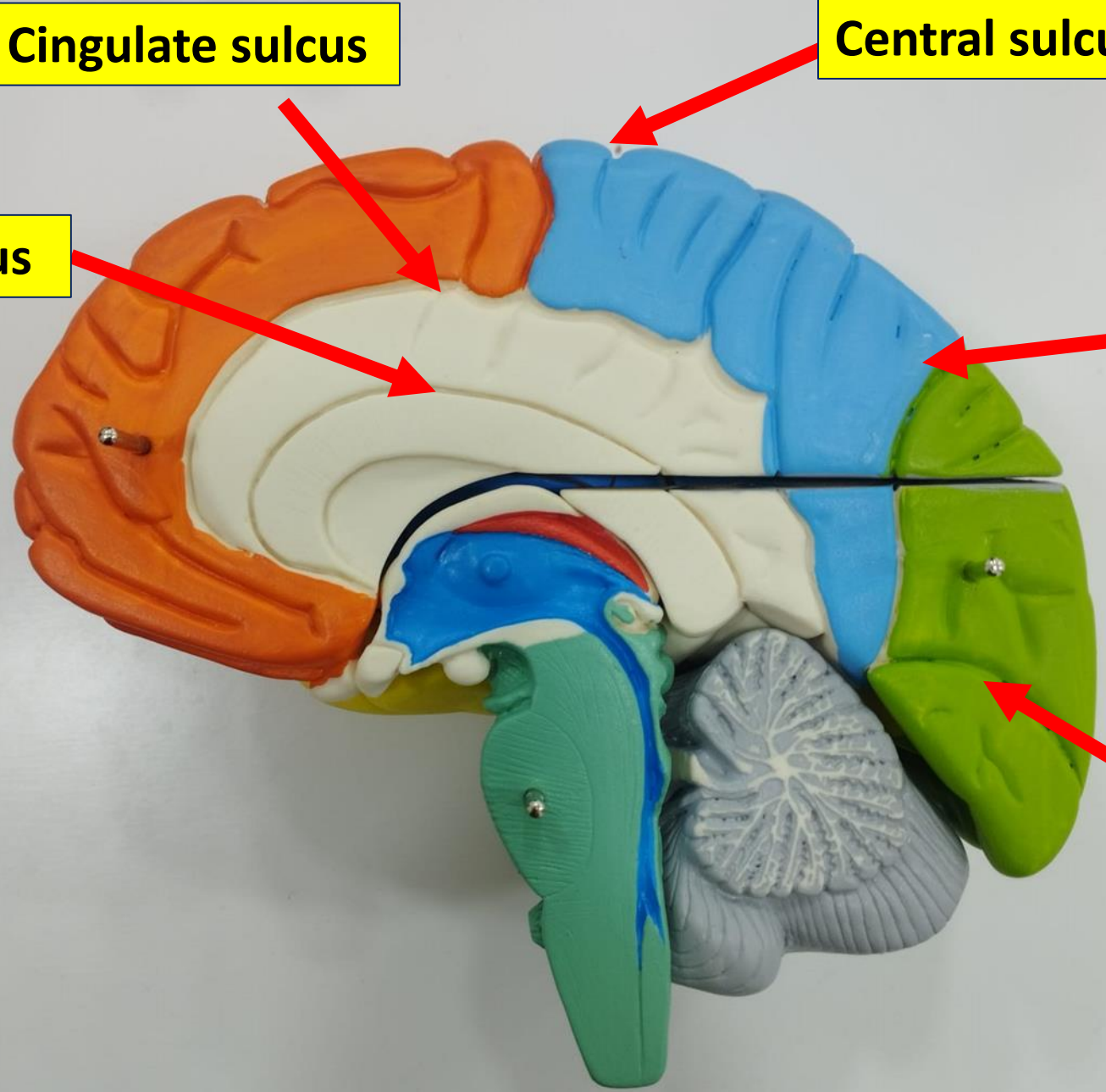
Central sulcus

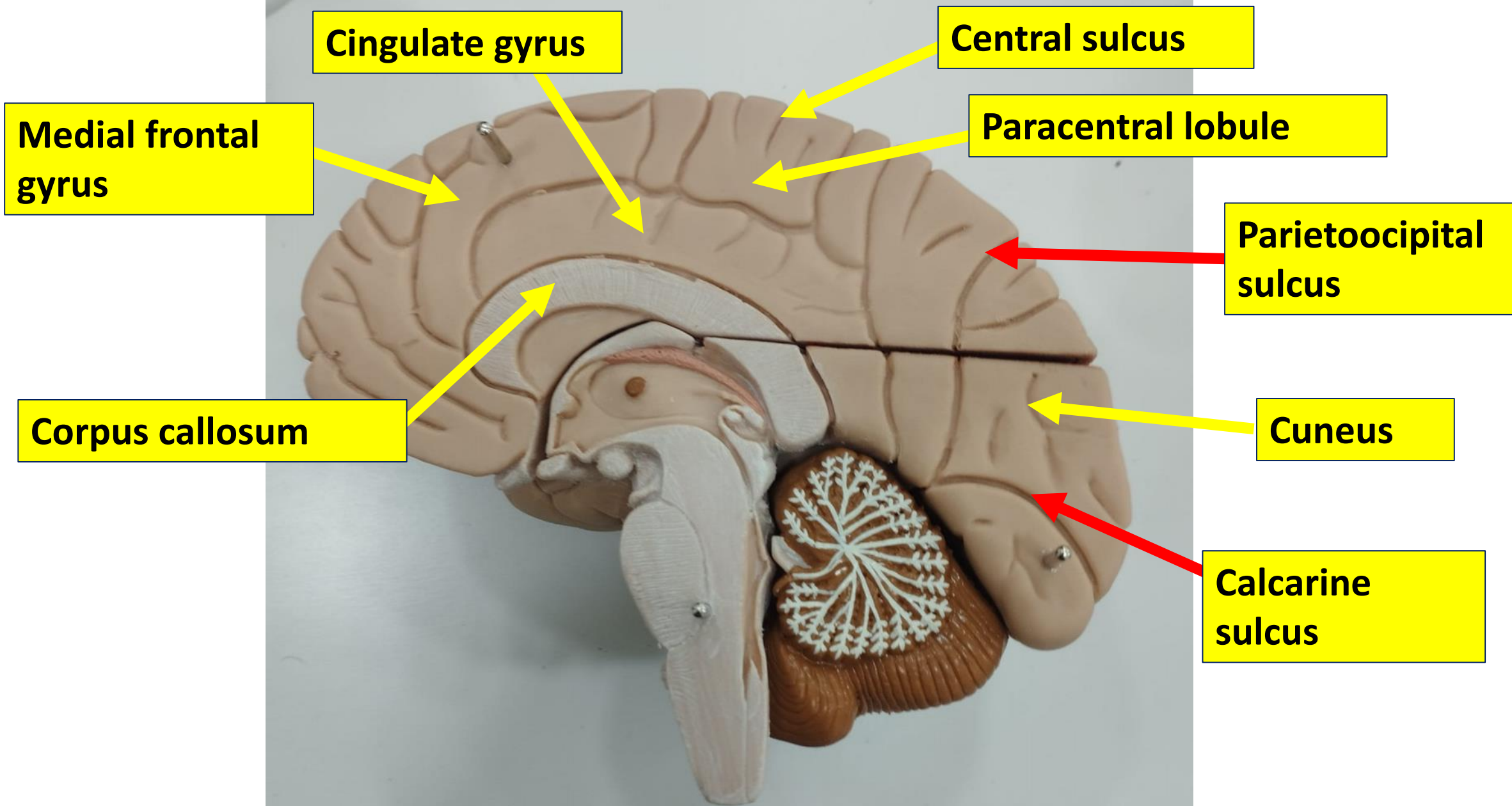
Callosal sulcus

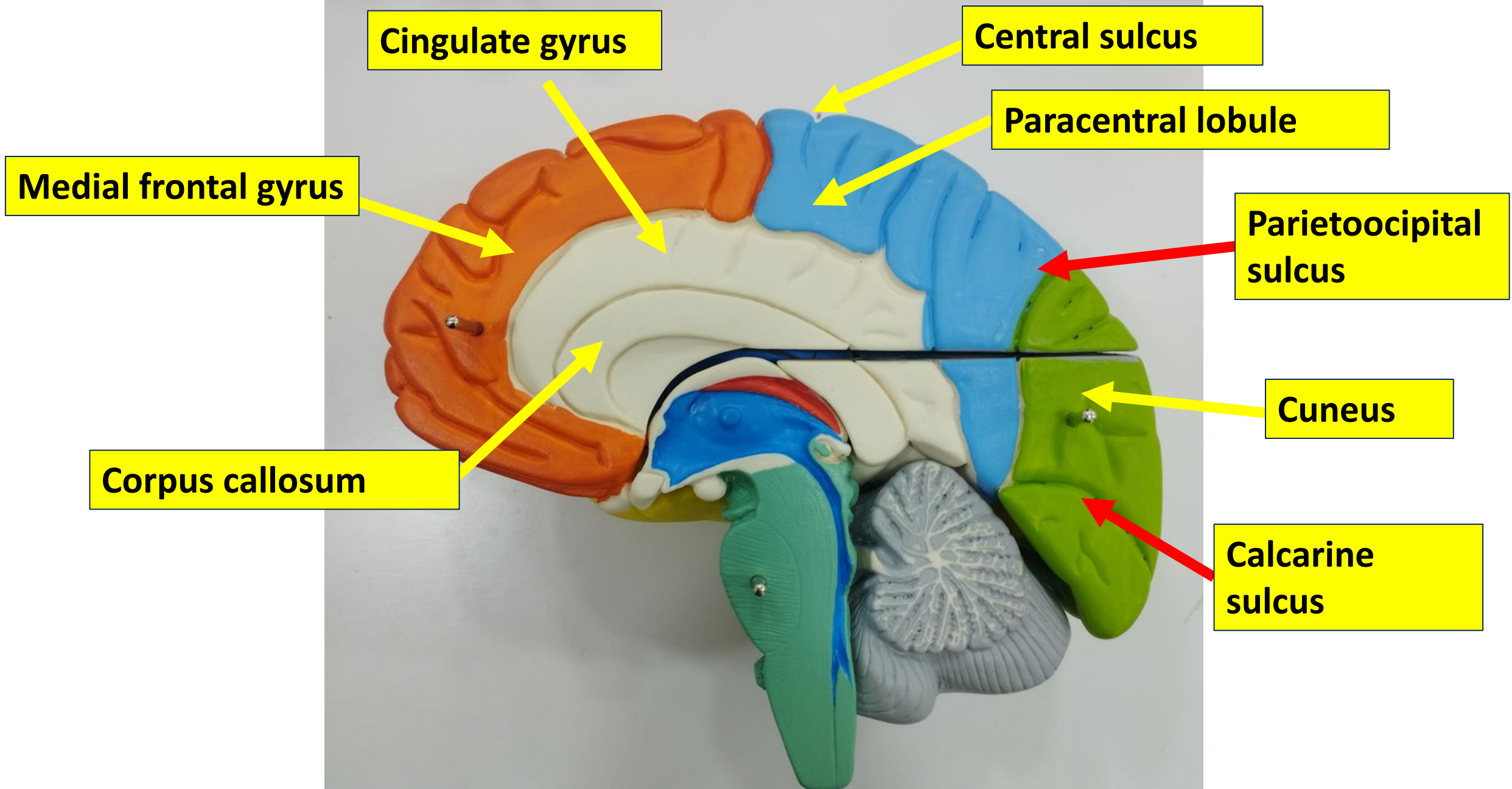
Parietooccipital sulcus

Cuneu

Calcarine sulcus







Cingulate gyrus

Central sulcus

Medial frontal gyrus

Paracentral lobule

Parietooccipital sulcus

Corpus callosum

Cuneus

Calcarine sulcus

Gyrus rectus

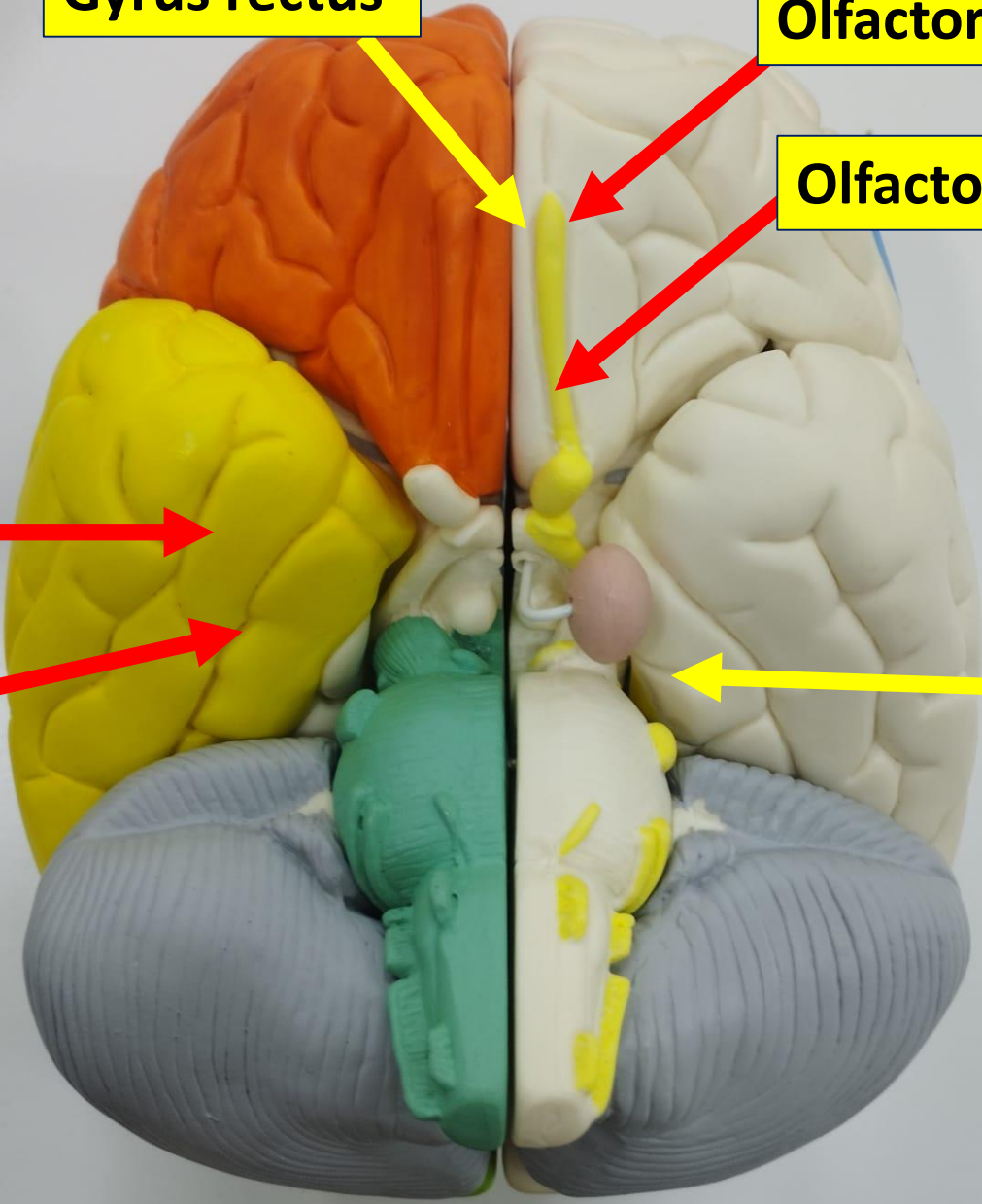
Olfactory Bulb

Olfactory tract

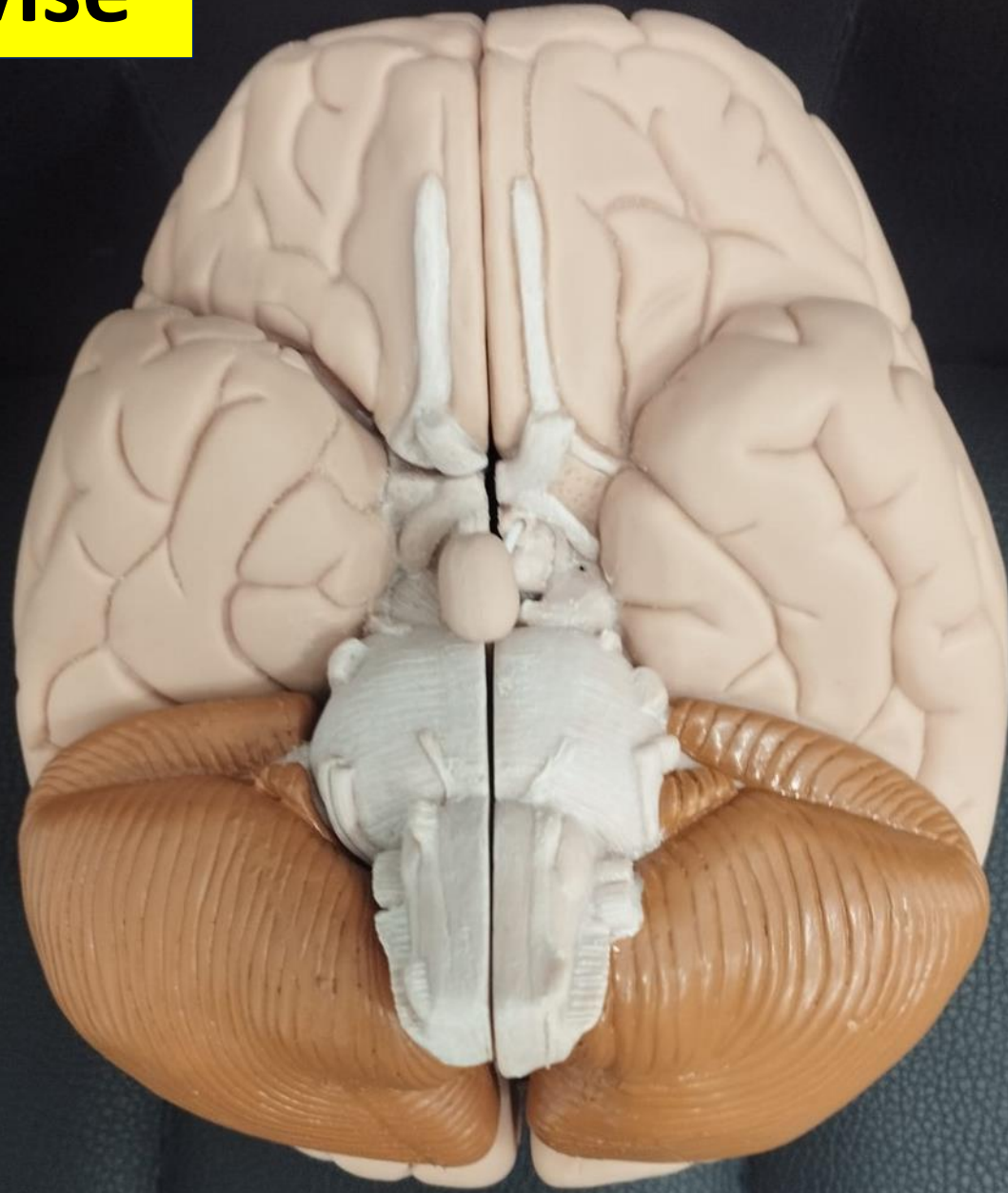
Occipitotemporal sulcus

Collateral sulcus

Parahippocampal gyrus



Revise



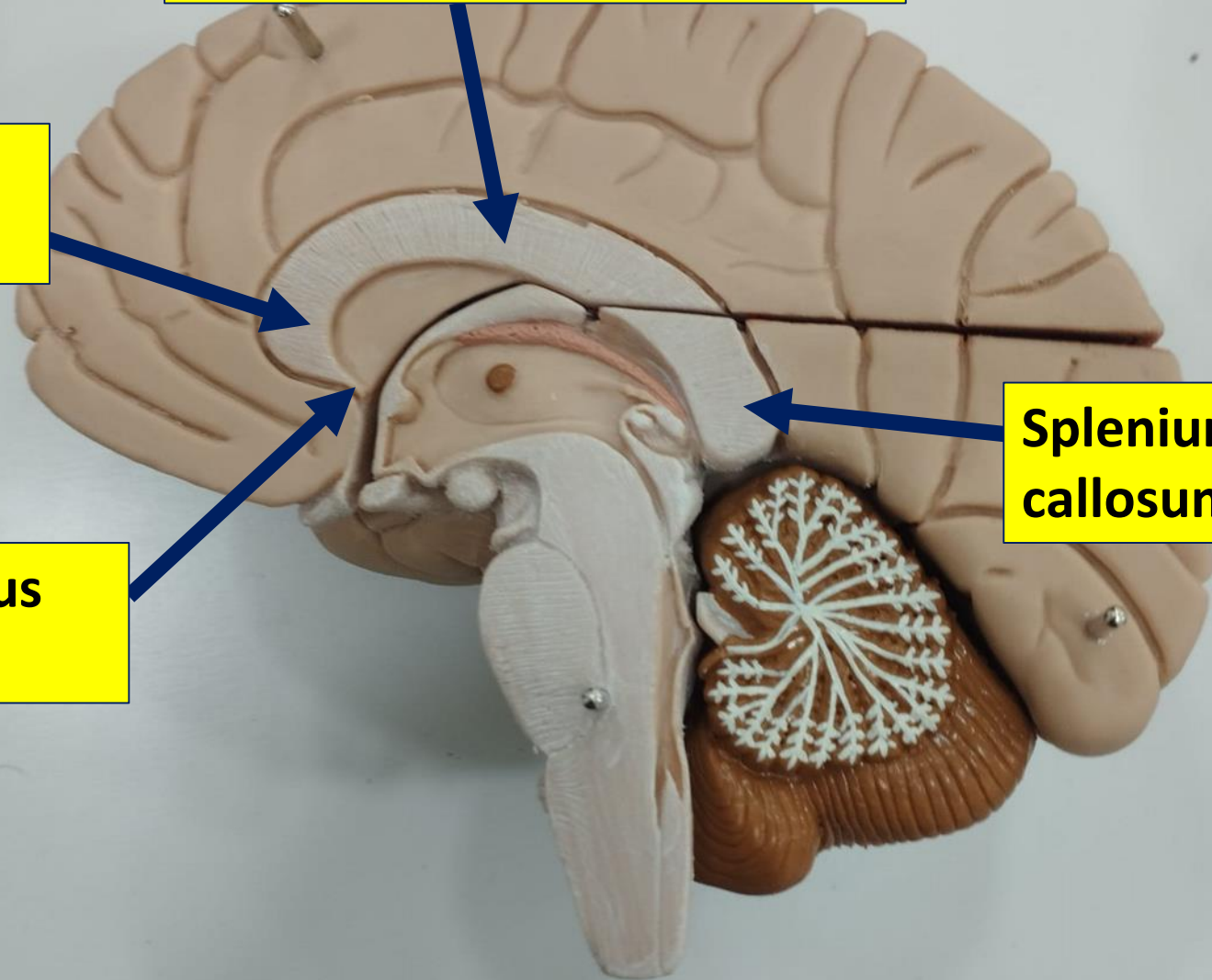
Basal ganglia and cerebral white matter

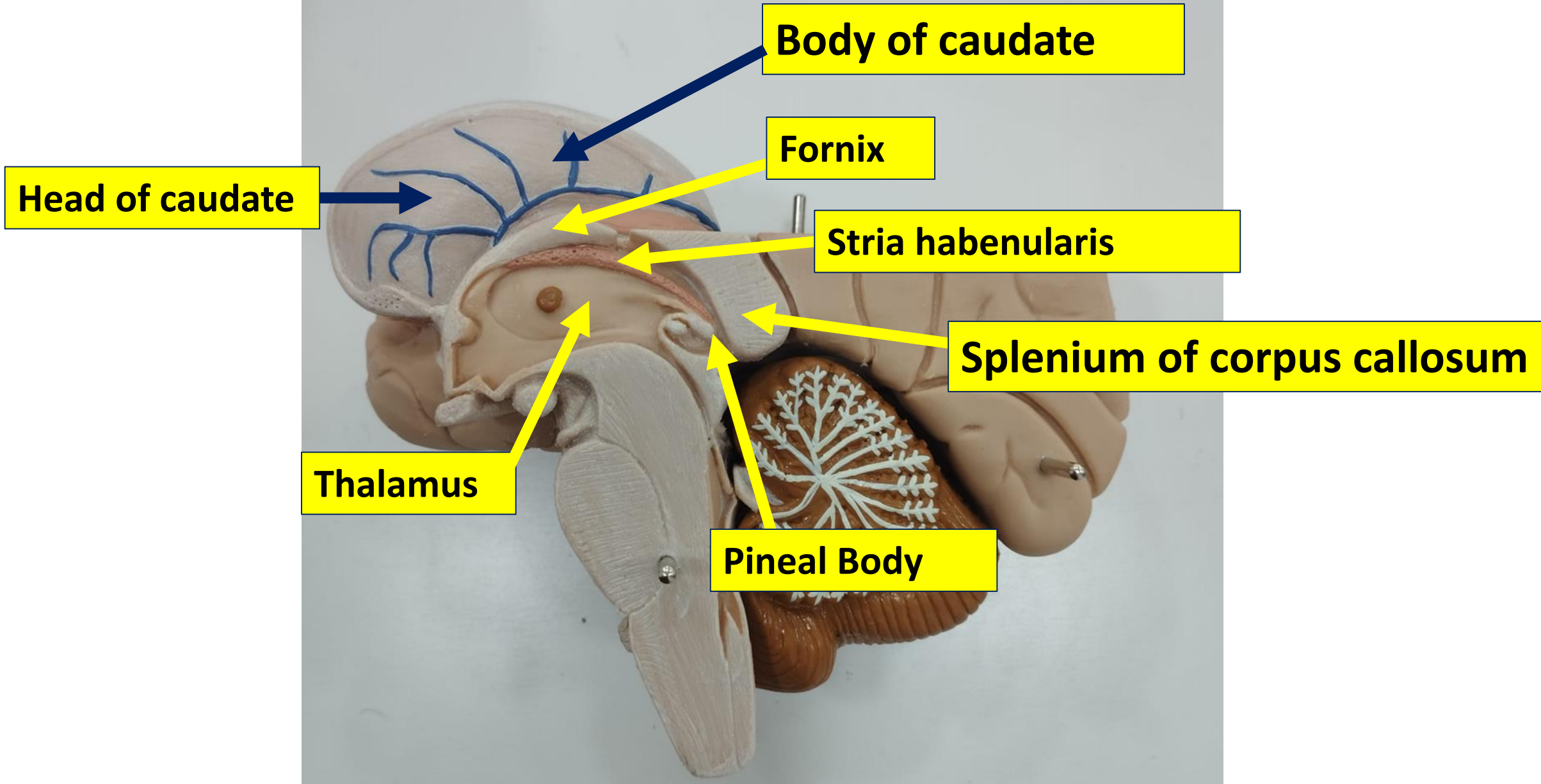
Body of Corpus callosum

Genu of Corpus callosum

Rostrum of Corpus callosum

Splenium of Corpus callosum





Head of caudate

Body of caudate

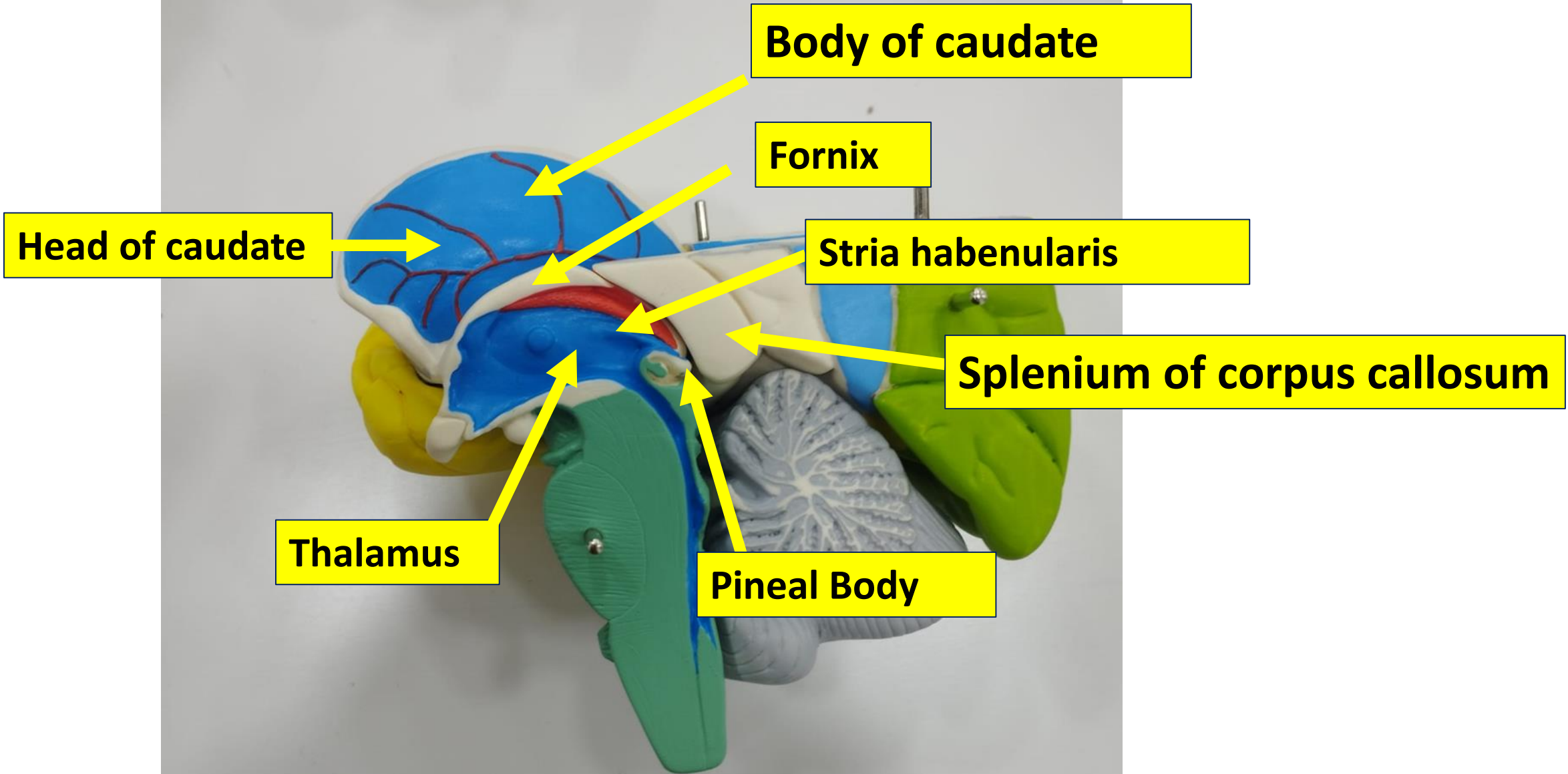
Fornix

Stria habenularis

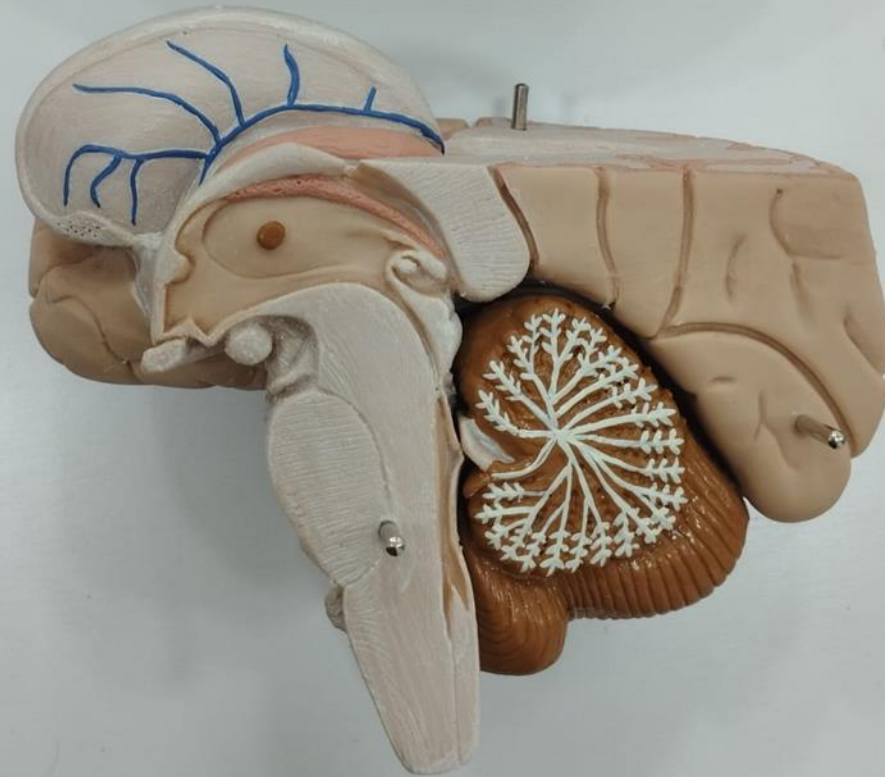
Splenium of corpus callosum

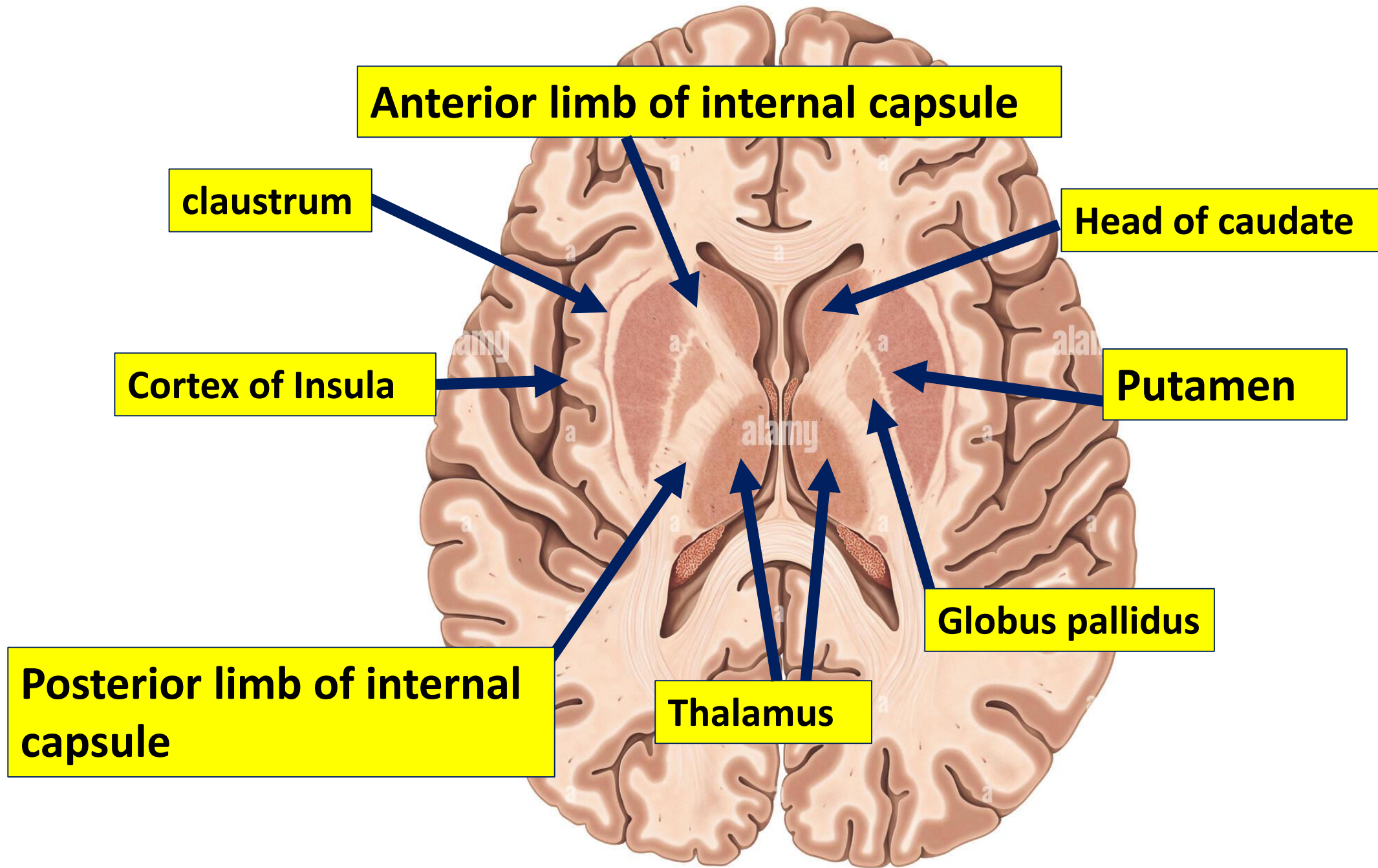
Thalamus

Pineal Body

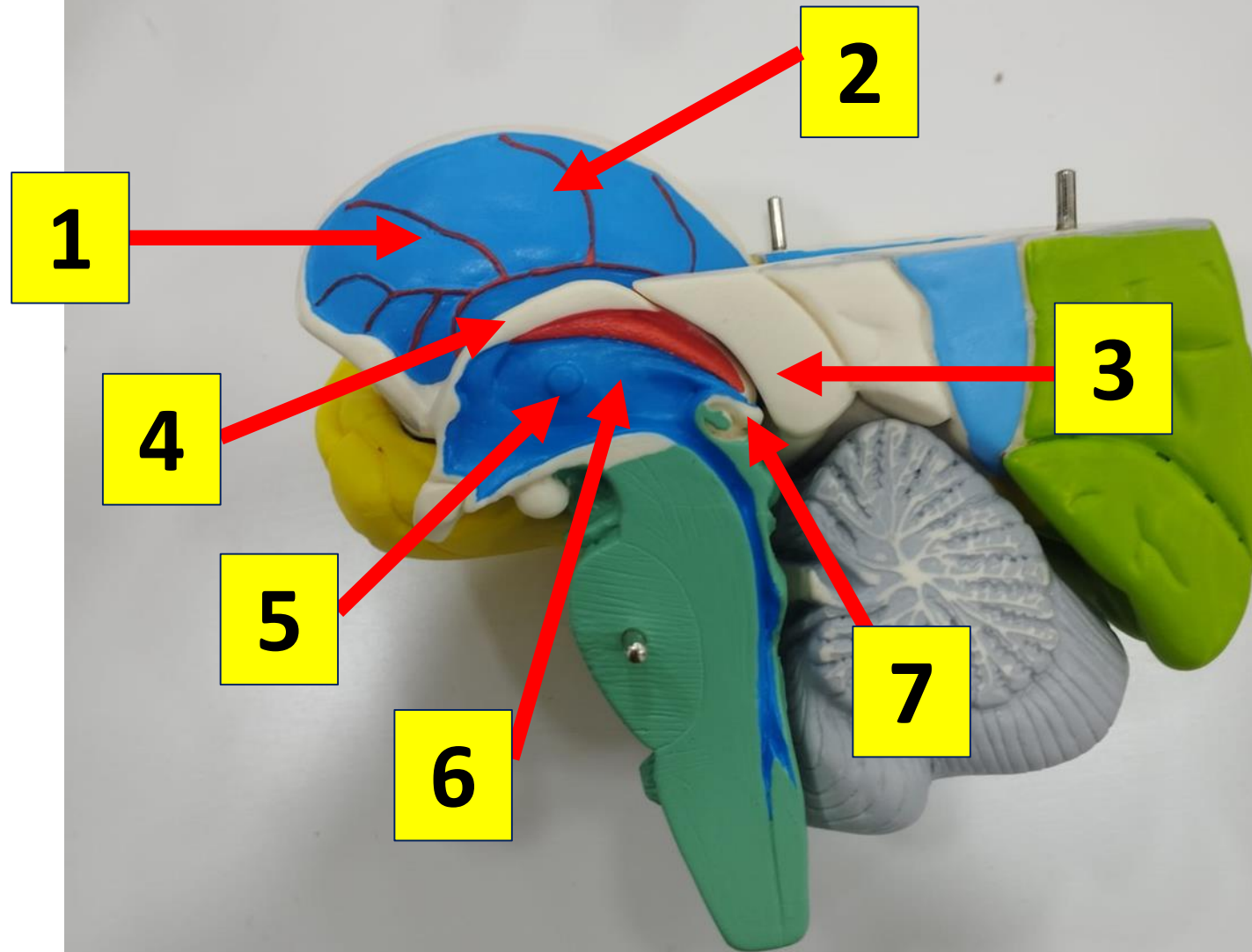


Revise

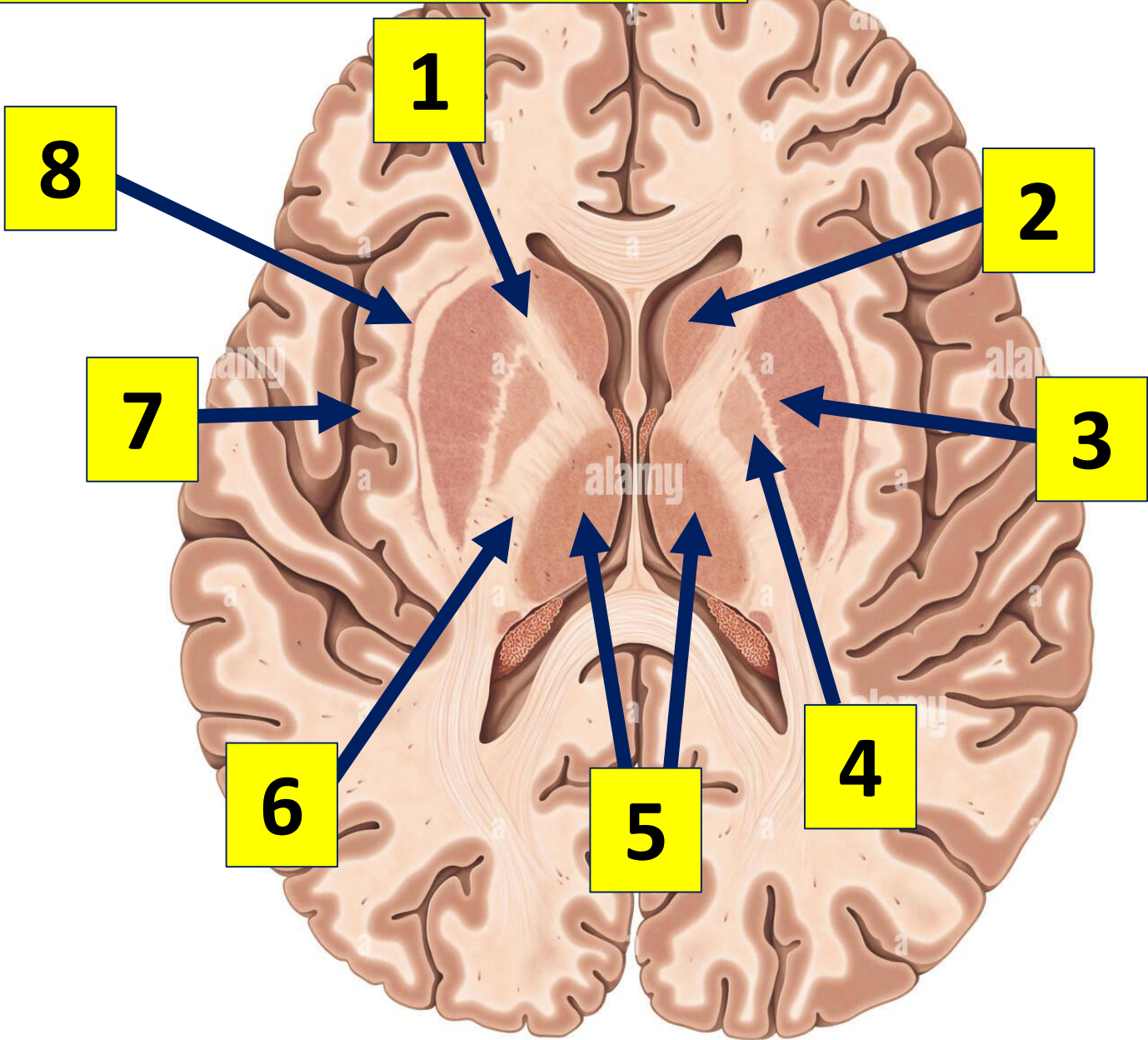




Label the following diagram



Label the following diagram



THANK

YOU!

