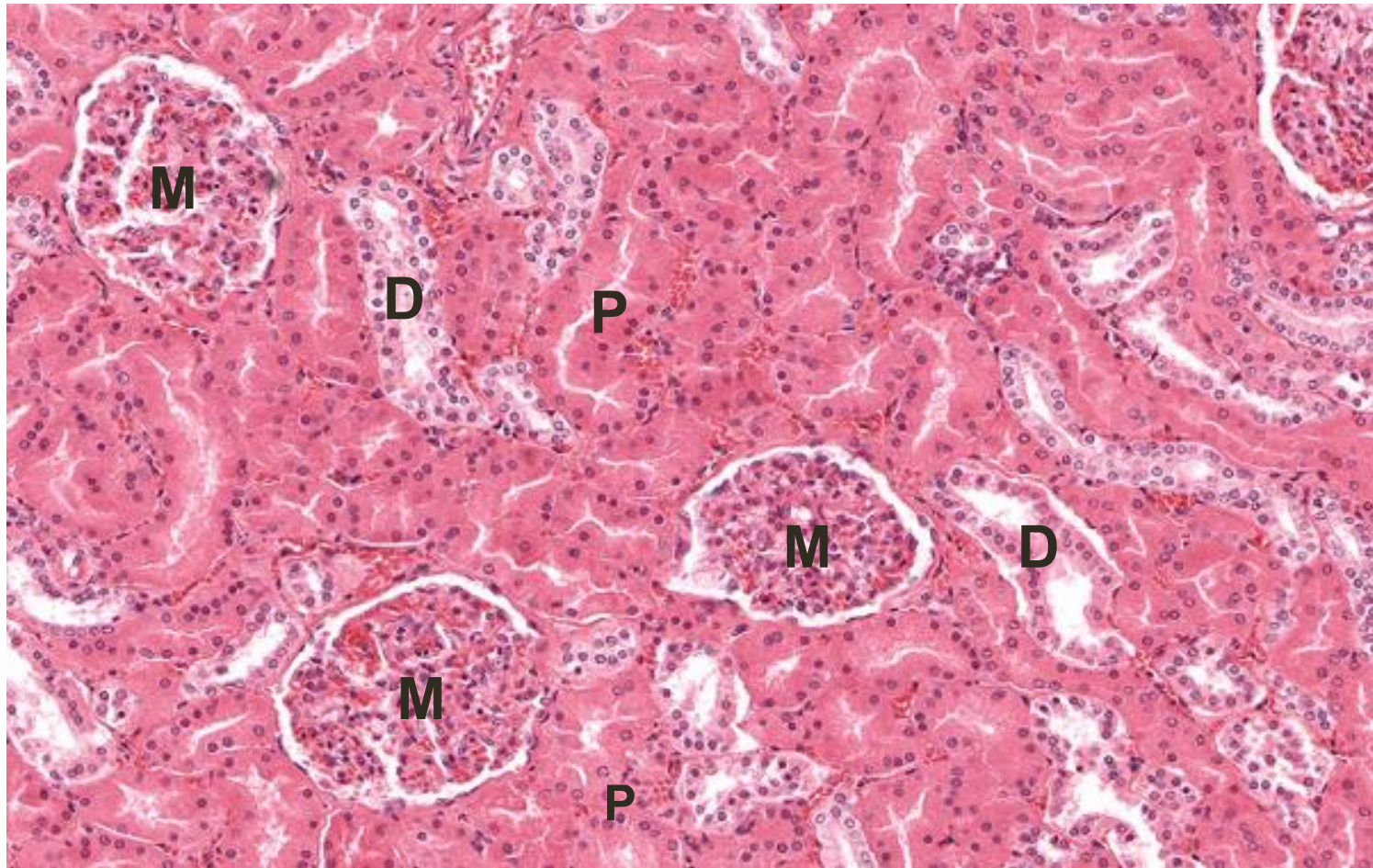
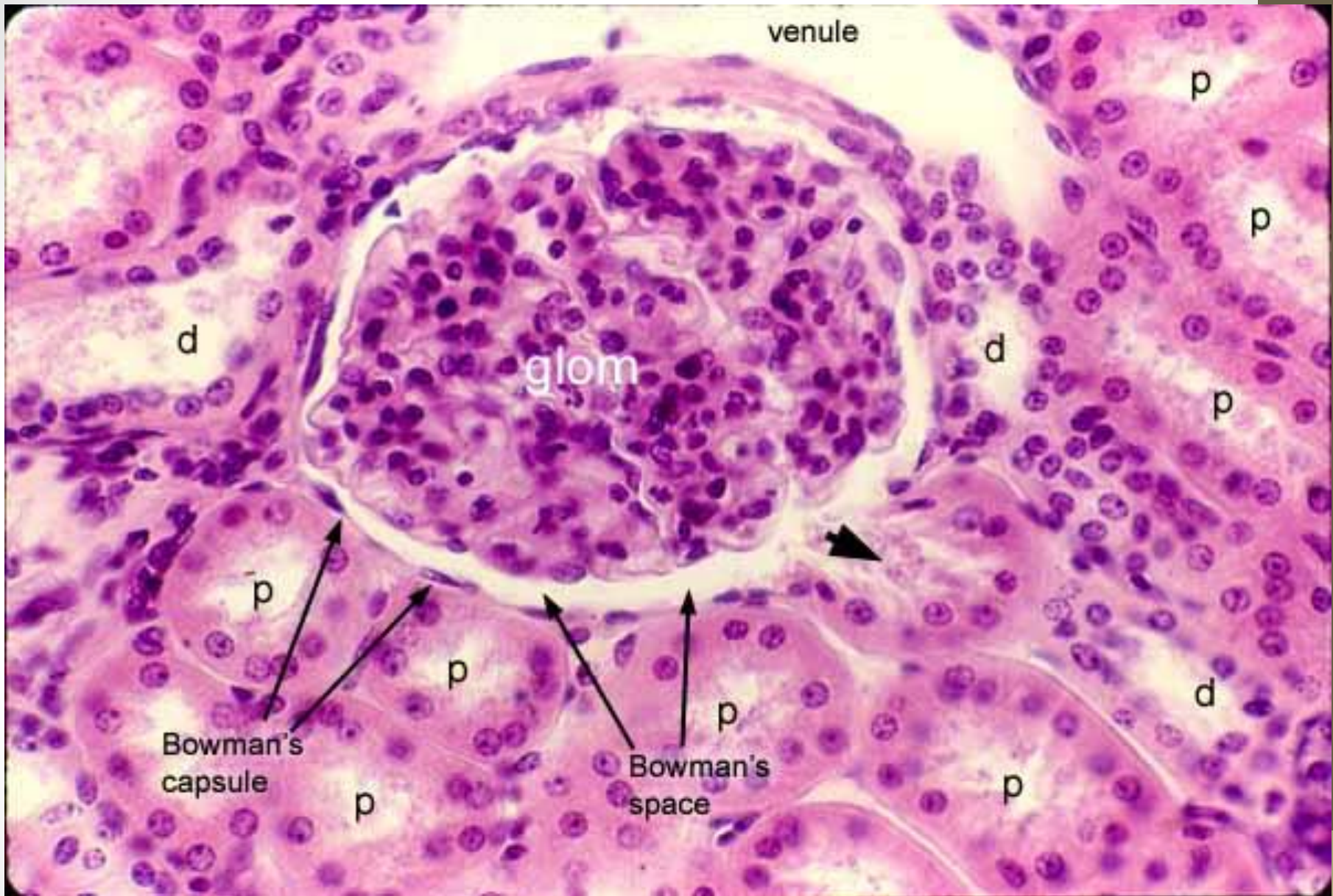


# Cortex of the kidney

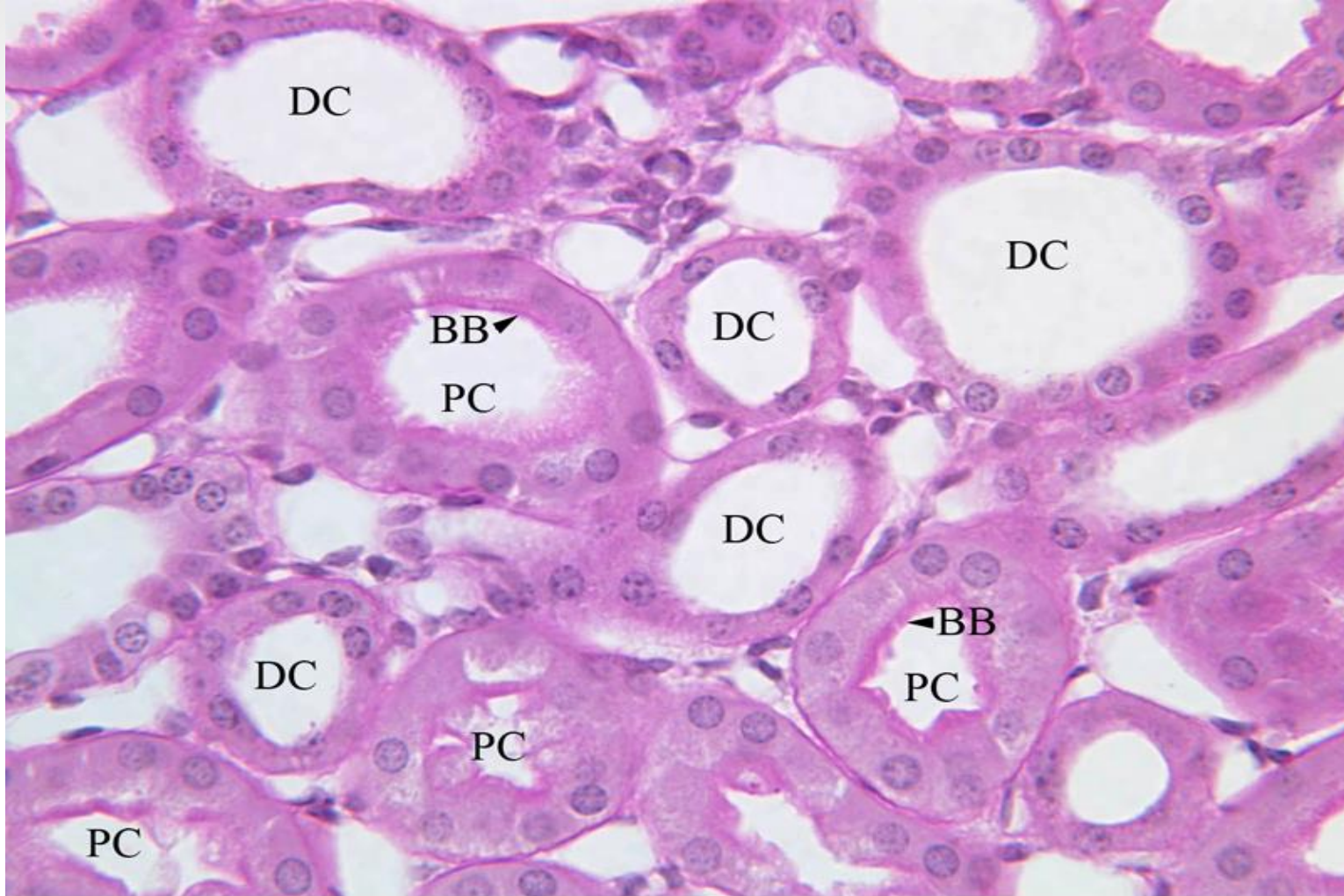


**M:** Malpighian renal corpuscle

**P:** Proximal convoluted tubules **D:** distal C tubules



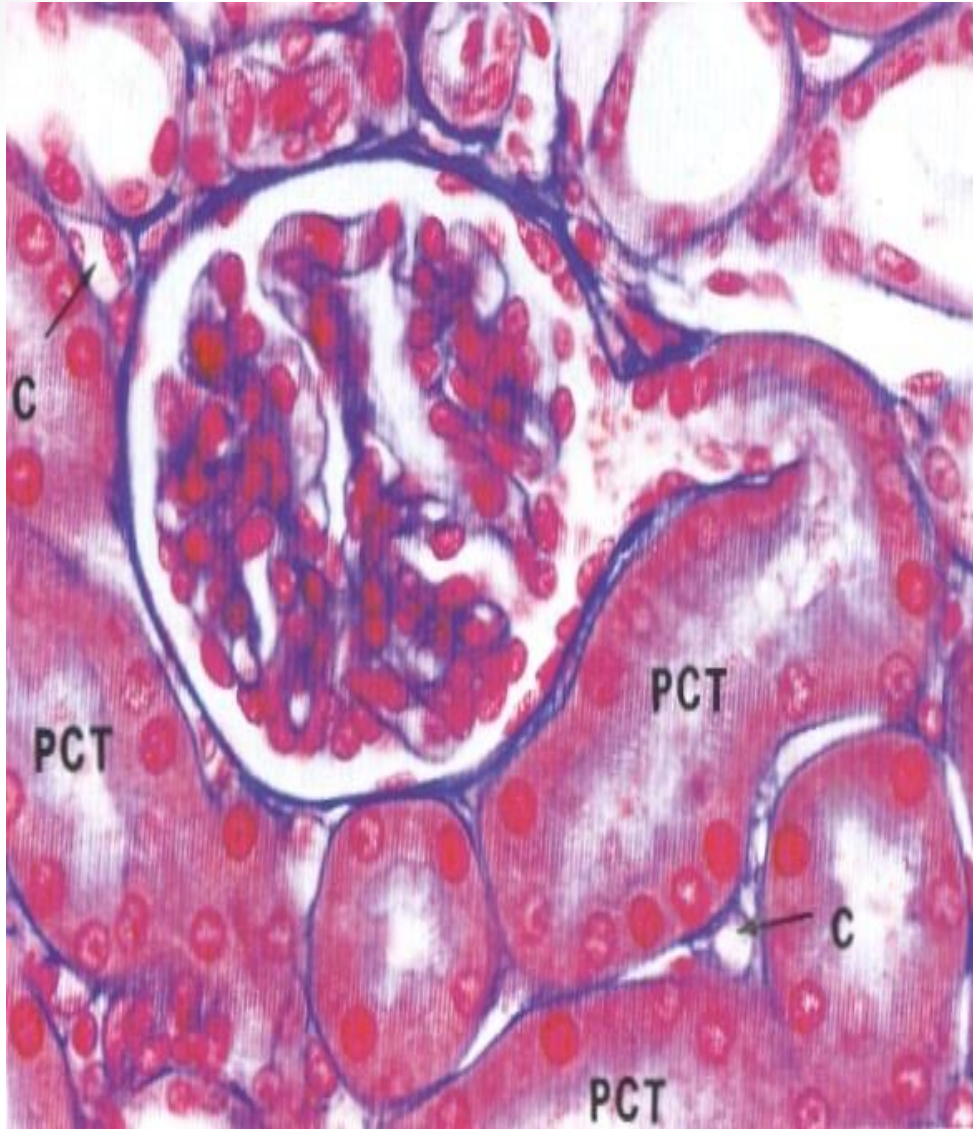
Cortex of the kidney **glom:** glomerulus  
**P:** proximal convoluted tubules **d:** distal convoluted tubules



DC - distal convoluted tubule    PC - proximal convoluted tubule    BB - brush border

**PC:** Proximal convoluted tubules have narrow lumen, lined with high cuboidal cells, deeply acidophilic cytoplasm, apical brush border **BB**.

**DC:** Distal convoluted tubules have wide lumen, lined with cubical cells .less acidophilic cytoplasm, no brush border.

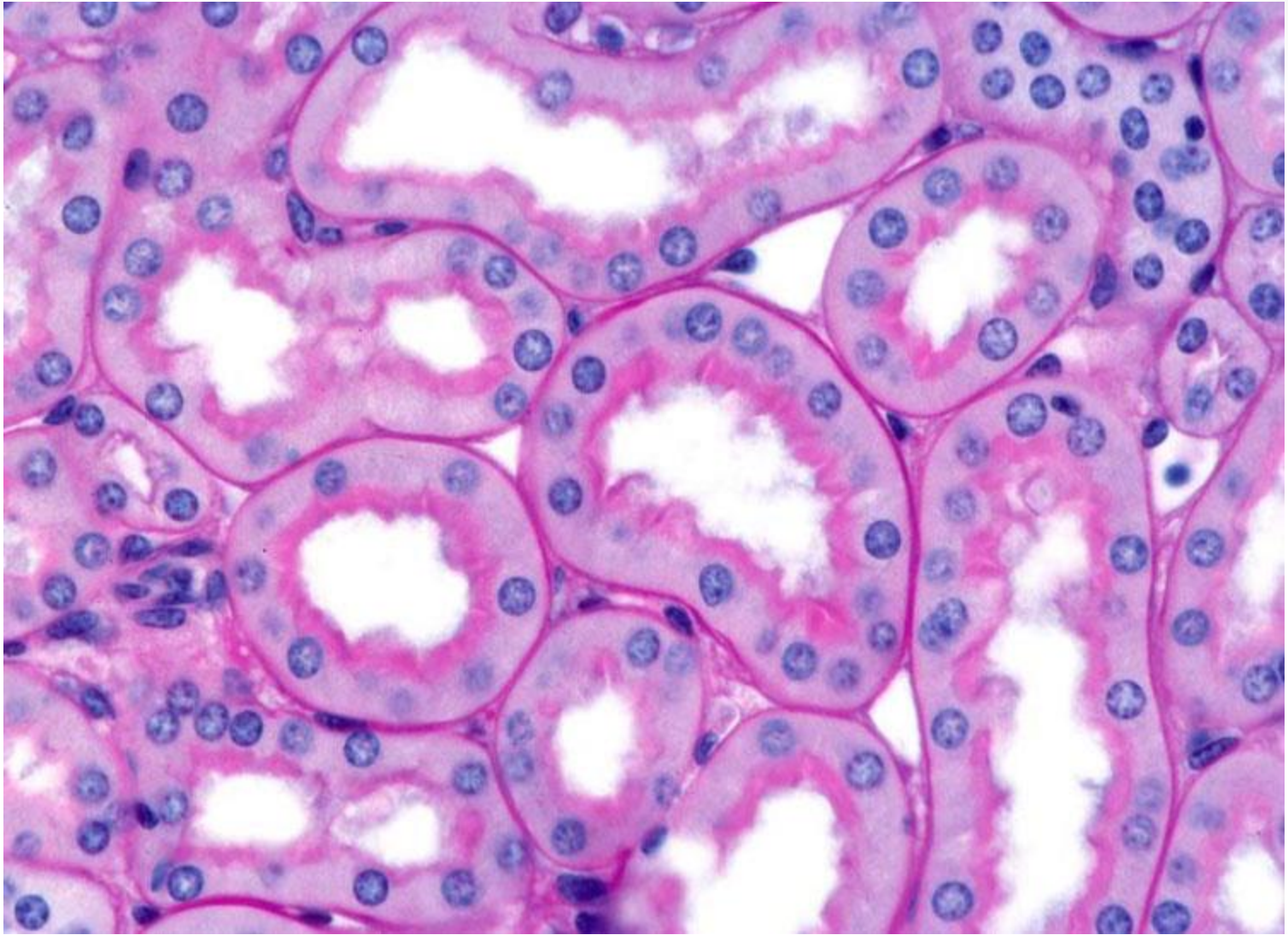


**PCT:** proximal convoluted tubules

**BM:** basement membrane

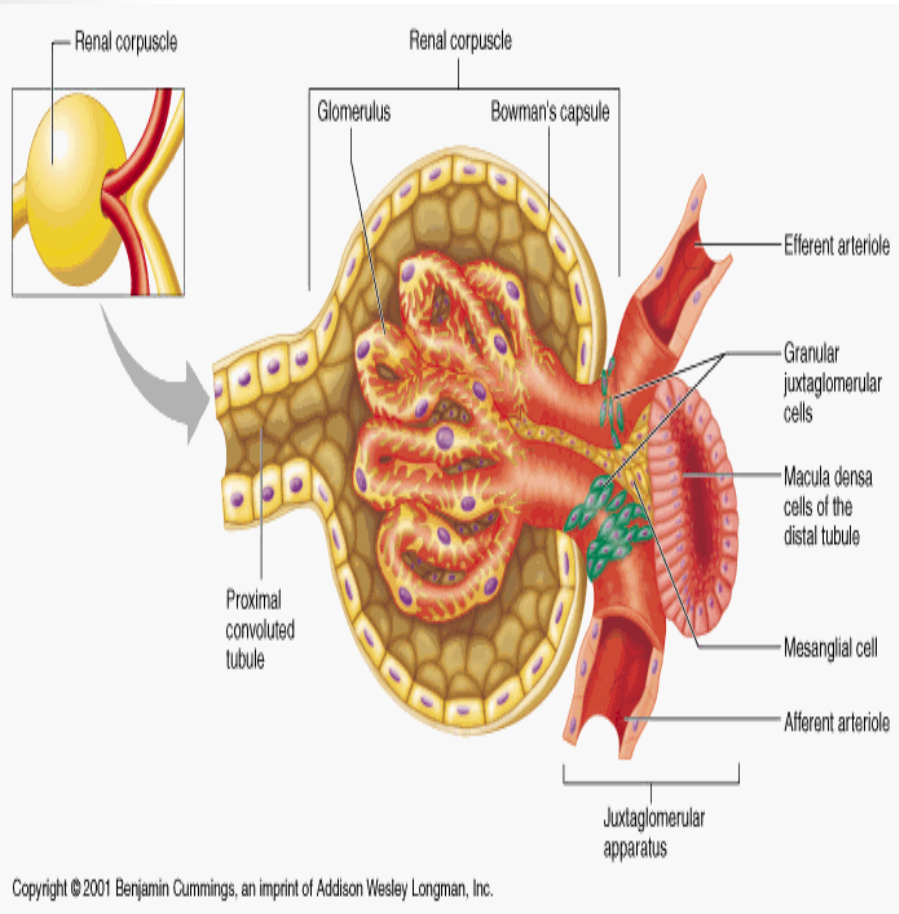
**BB:** brush border

**C:** capillary



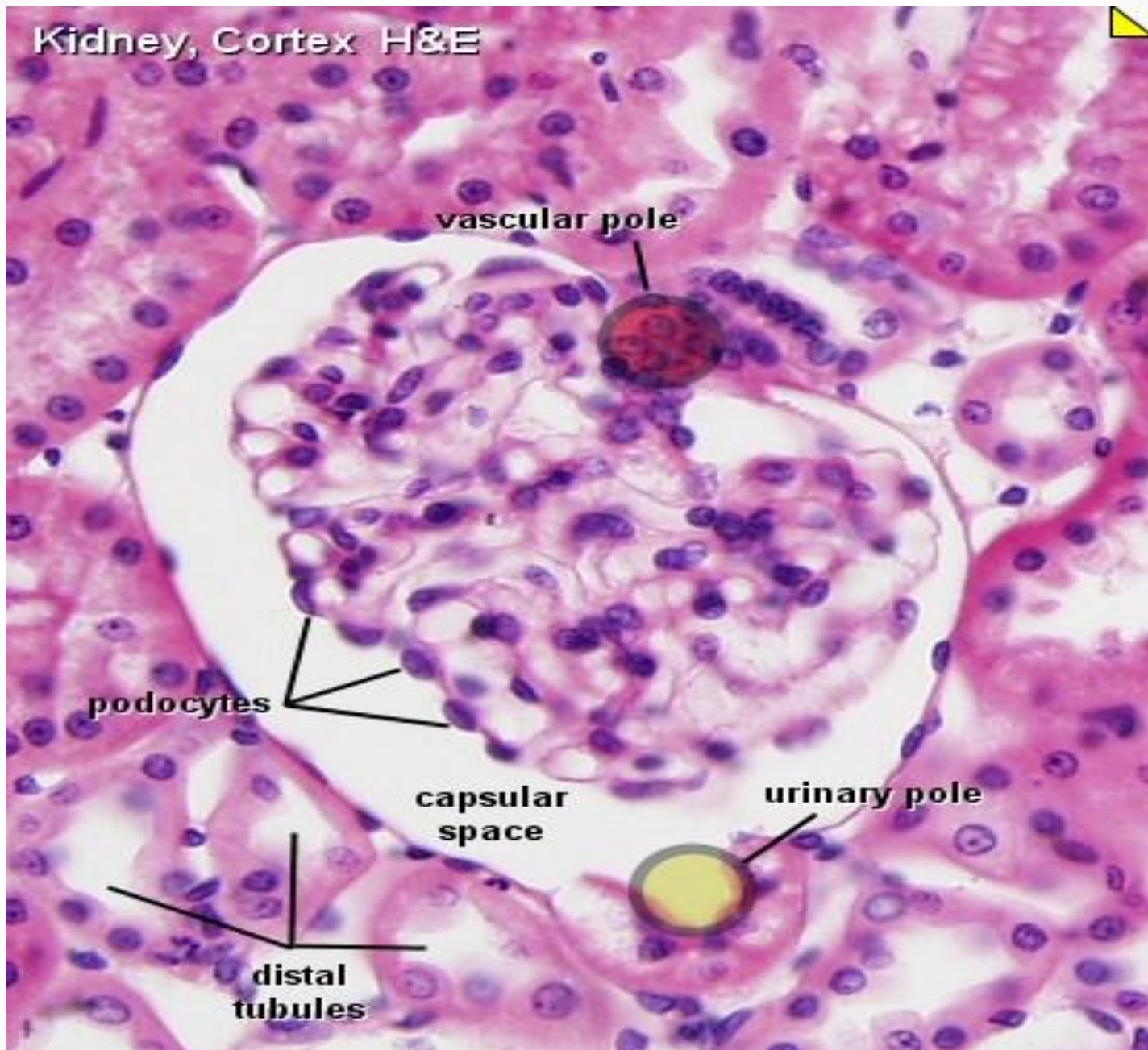
**Proximal convoluted tubule PAS stain**

# Malpighian Corpuscle



BC - Bowman's capsule (parietal layer) BS - Bowman's space  
 Pod - podocyte (visceral layer of Bowman's capsule) G - glomerulus (capillary tuft)

**Kidney, Cortex H&E**





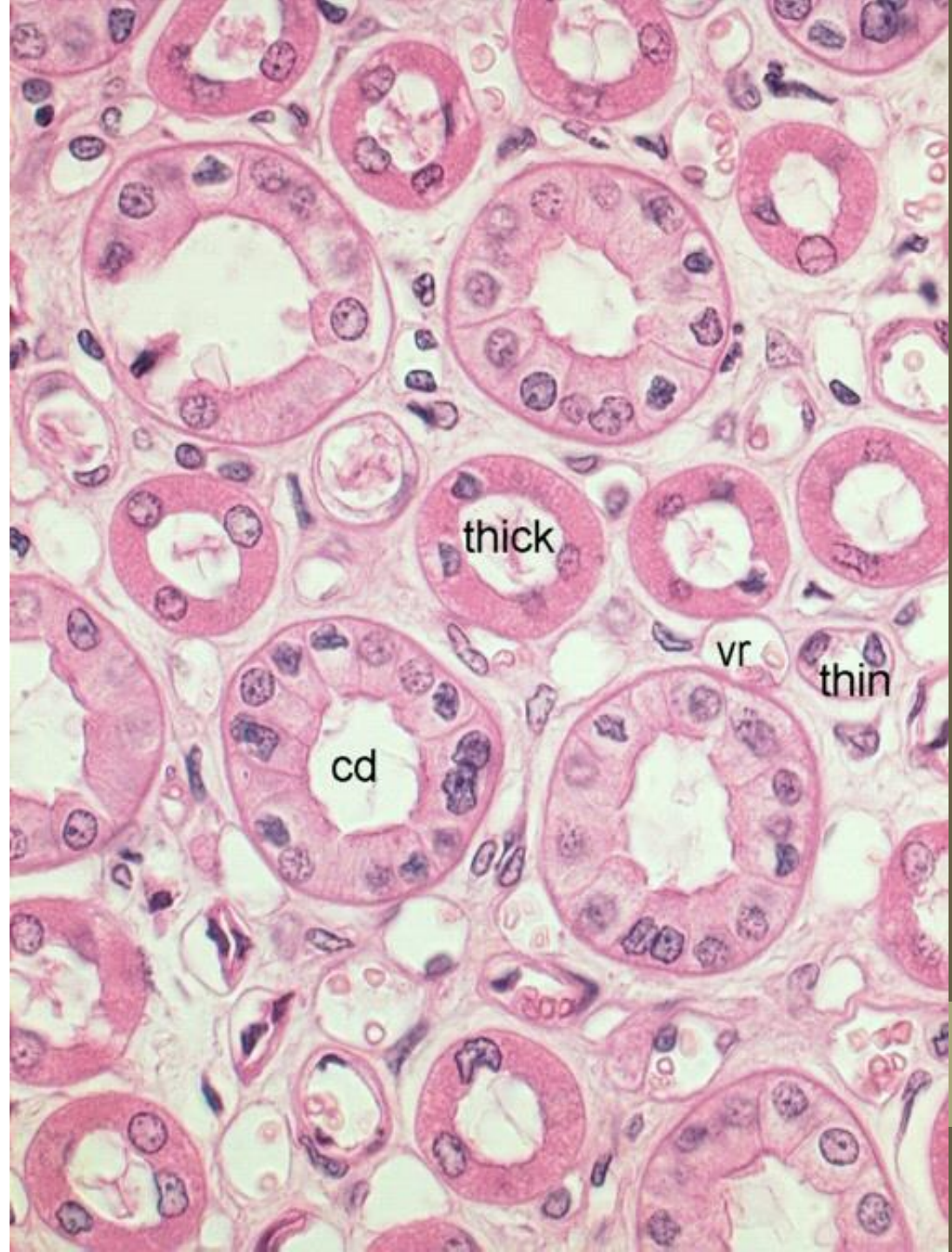
BC - Bowman's capsule (parietal layer) Pod - podocyte (visceral layer of Bowman's capsule)  
MD - macula densa JG - juxtaglomerular cells DC - distal convoluted tubule

## Medulla of the kidney

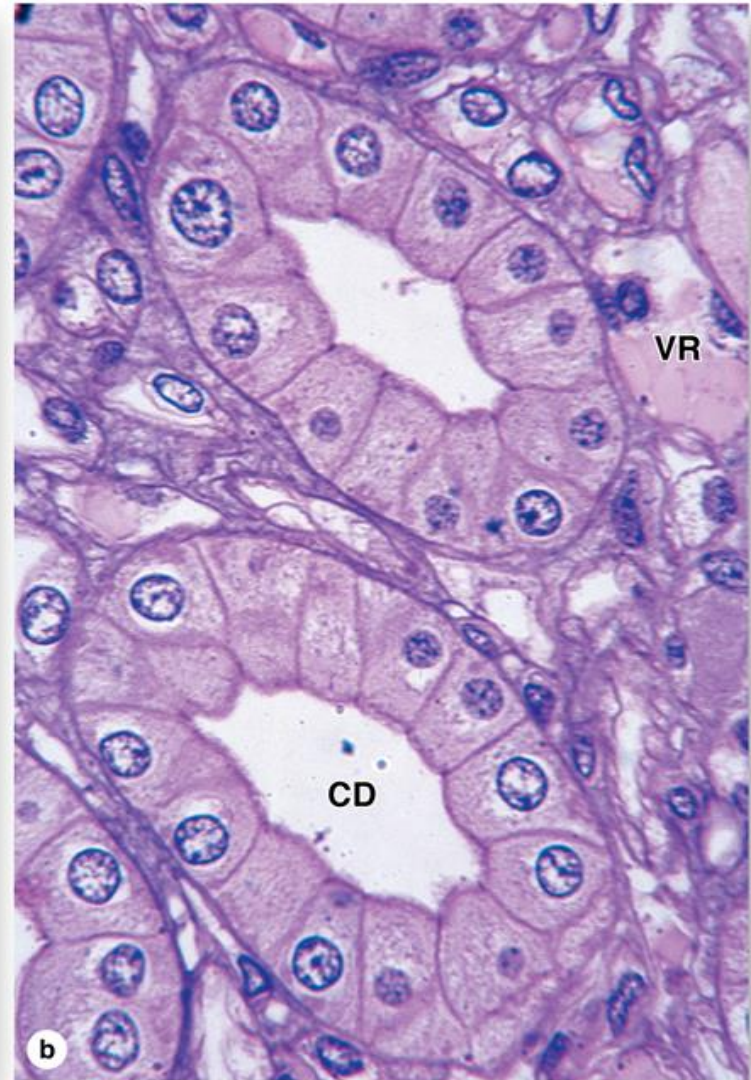
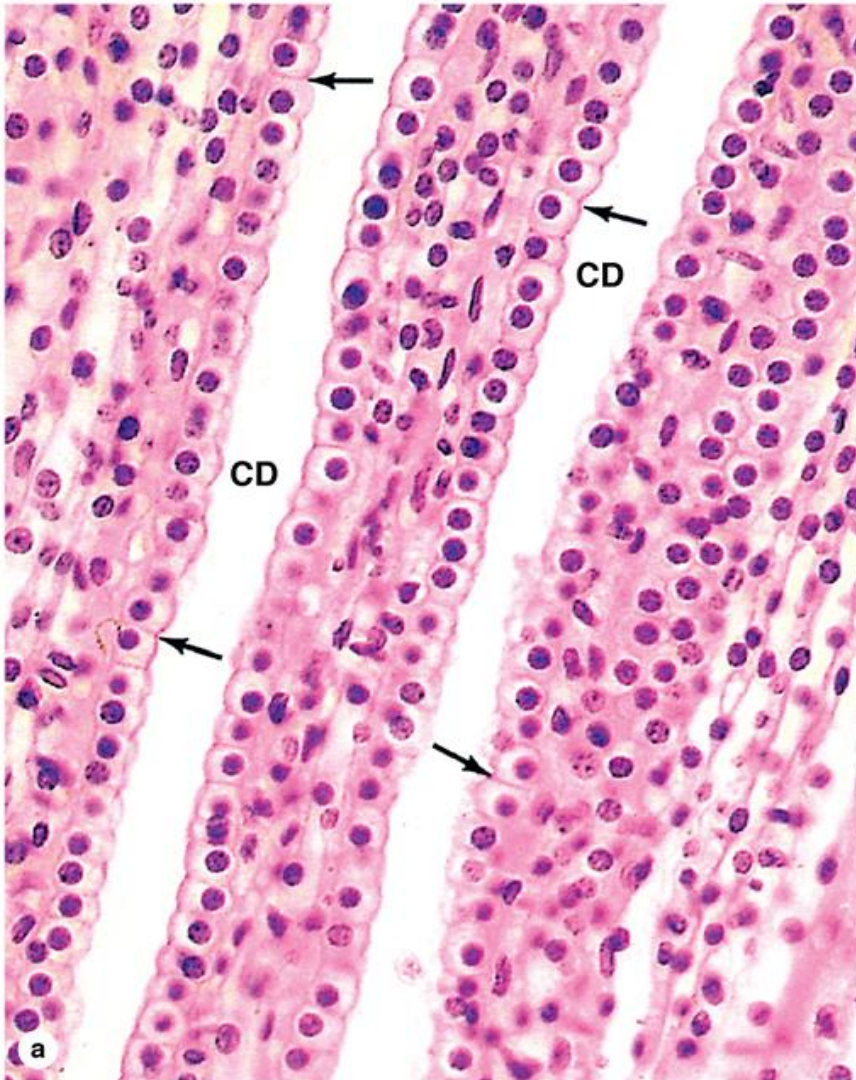
**Cd:** collecting duct

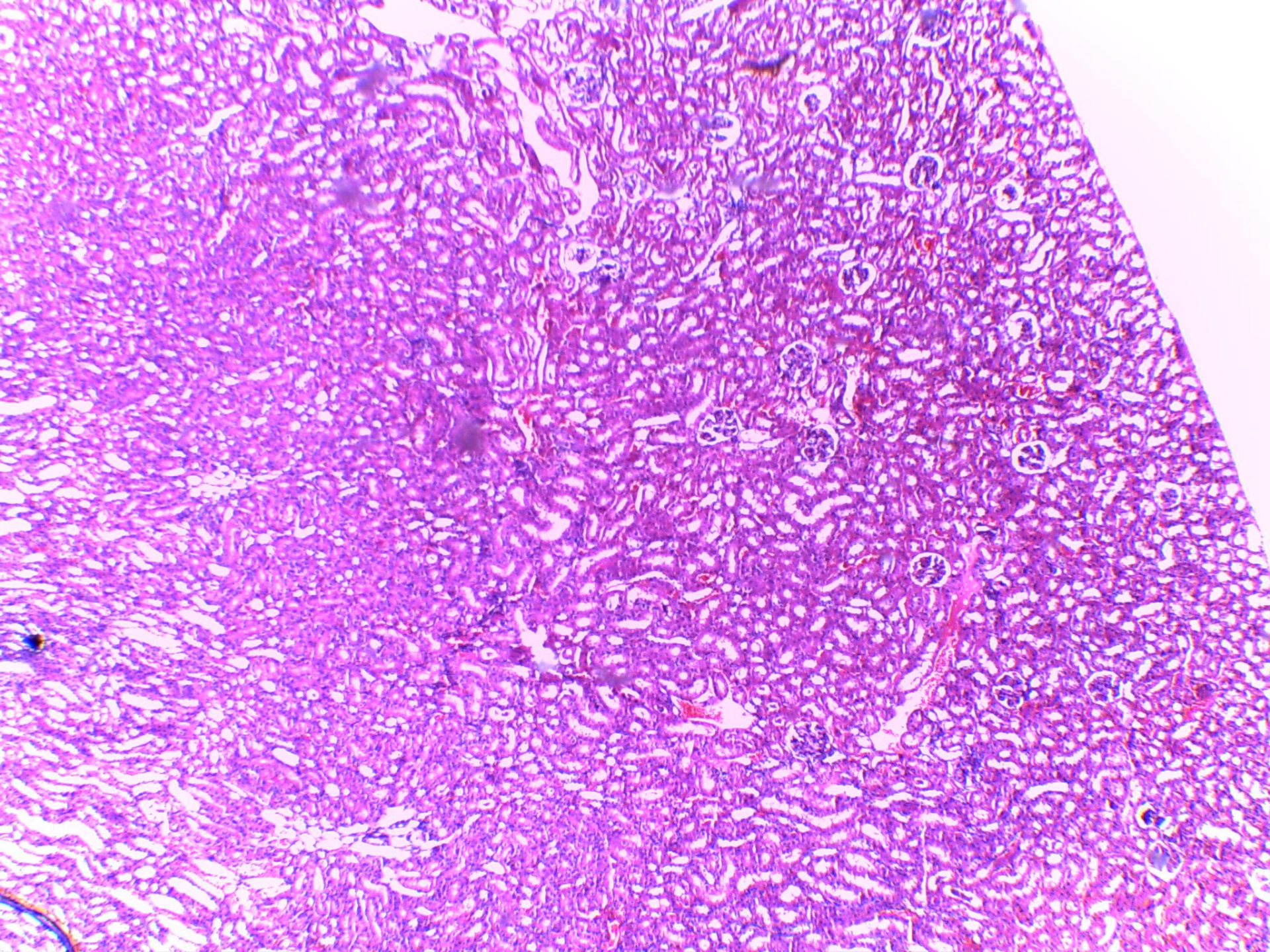
Loop of Henel  
(**Thick ascending and thin**)

**Vr:** vasa recta

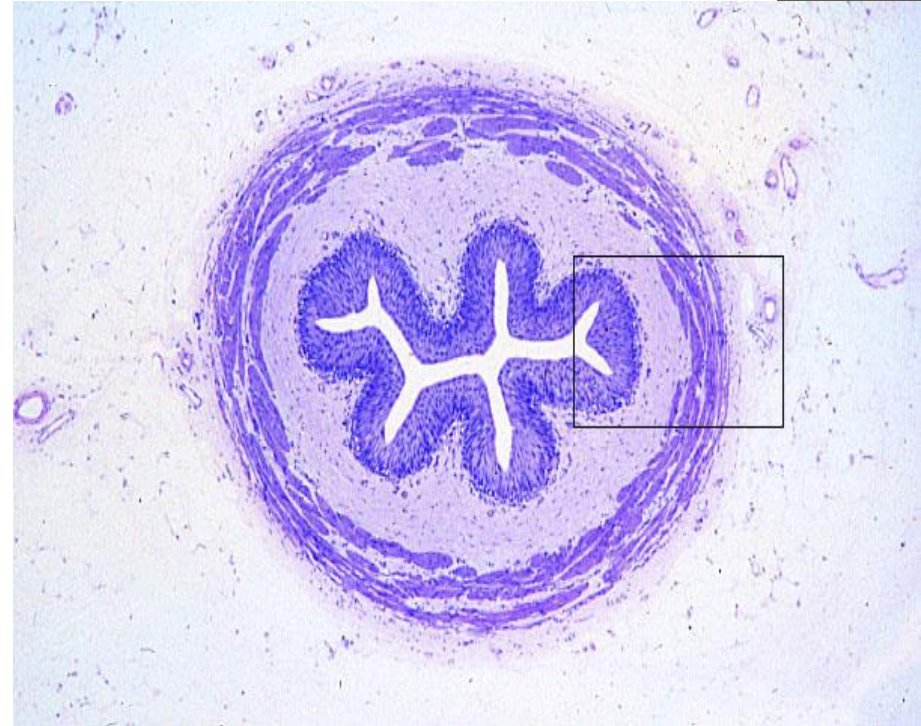
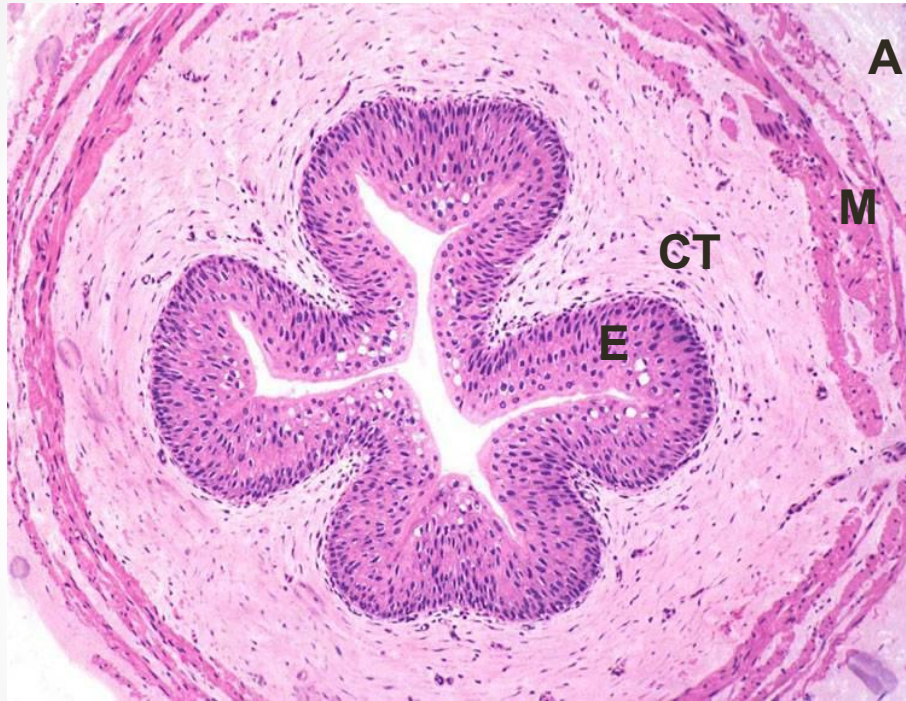


# Collecting Duct





# Ureter

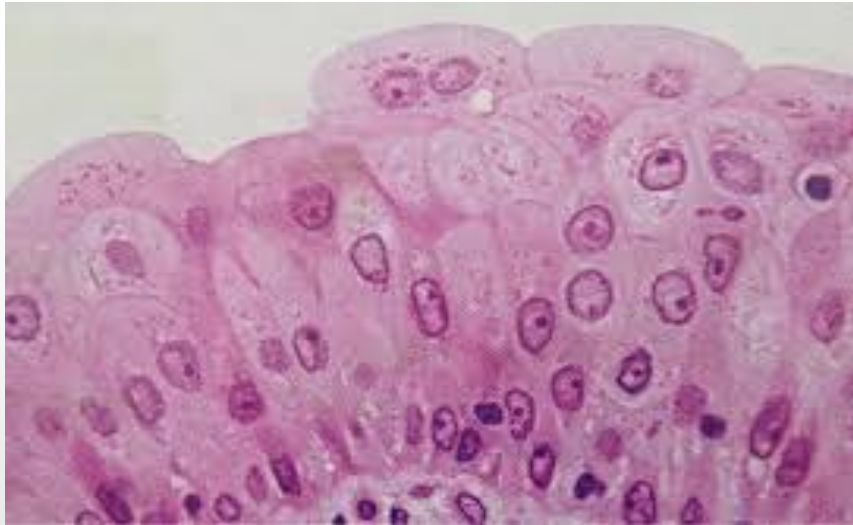
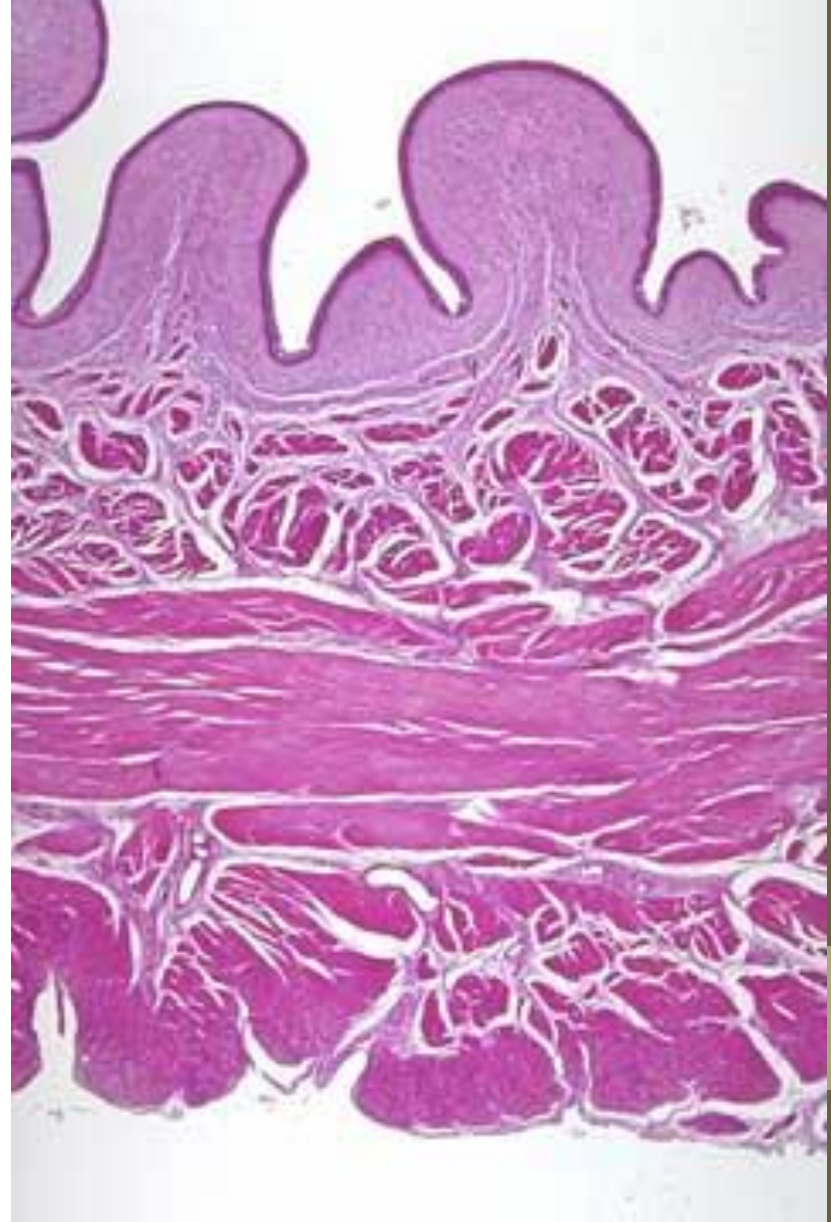
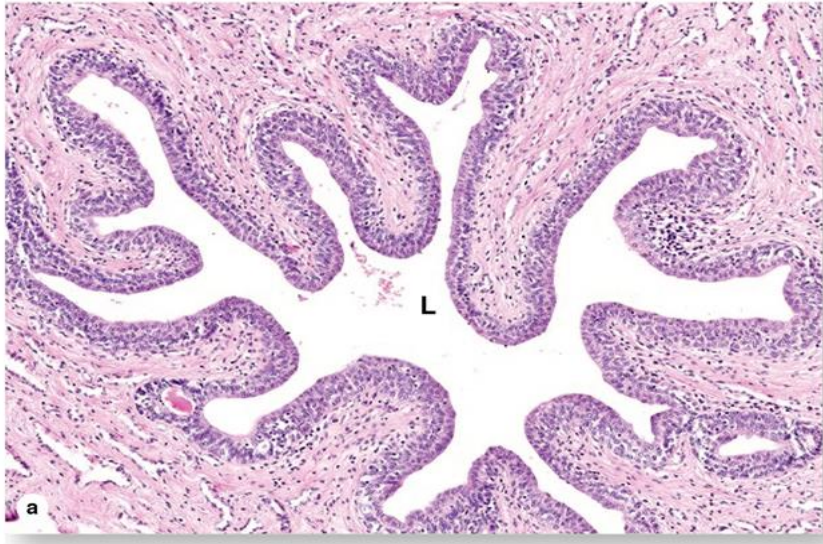


**Mucosa:** It is folded, formed of transitional epithelium (E) and lamina propria (CT).

**Musculosa (M):** thin, formed inner longitudinal & outer circular.

**Adventitia (A).**

# Urinary bladder



Transitional epithelium