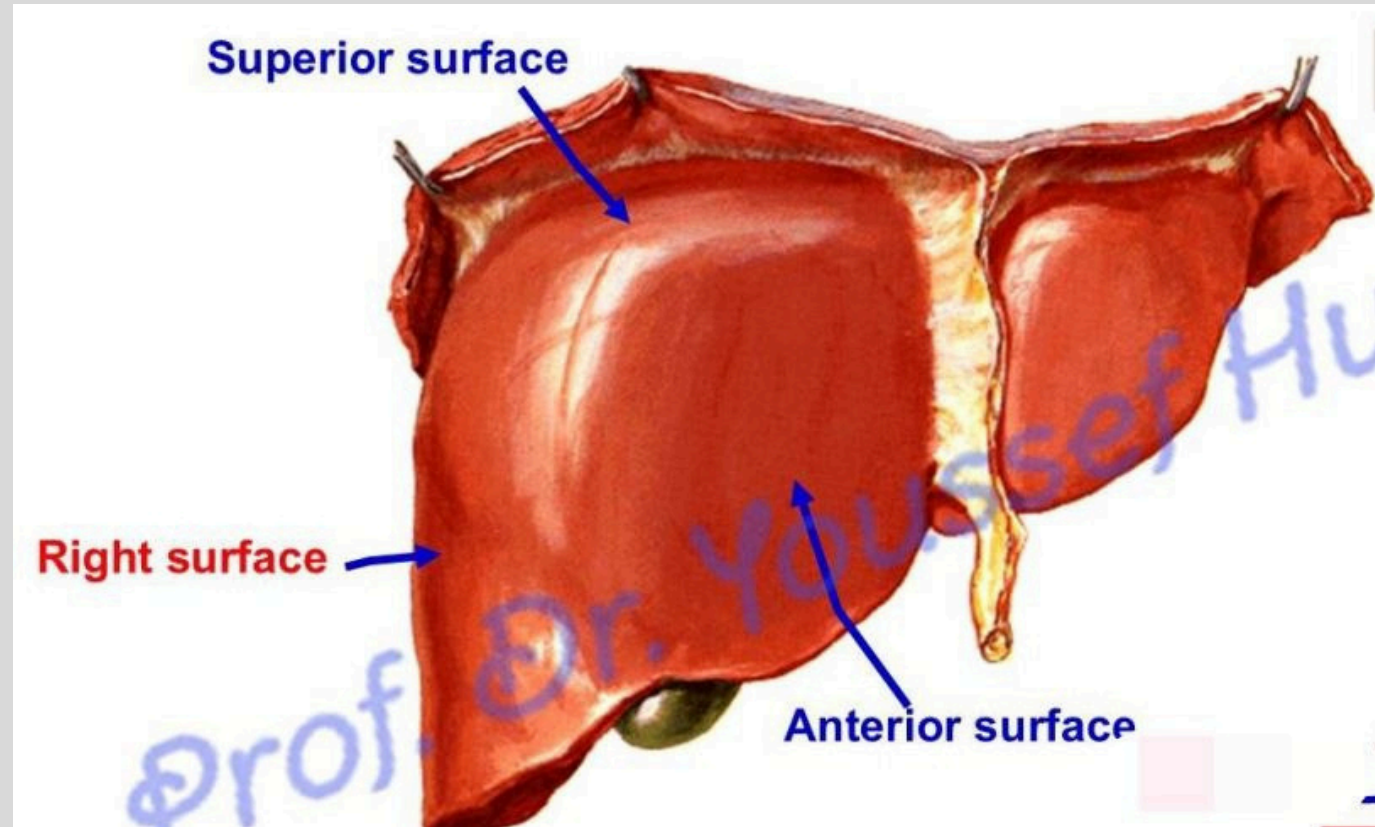
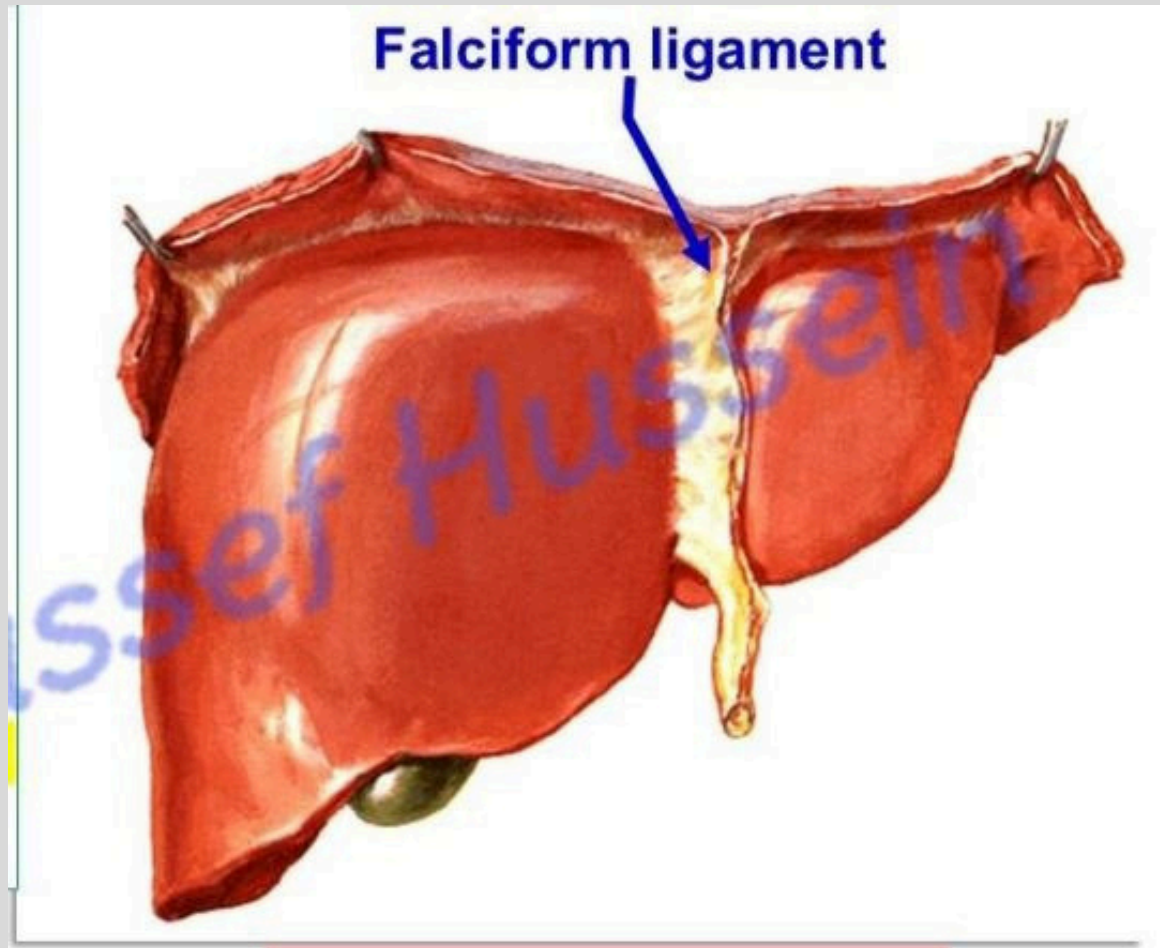
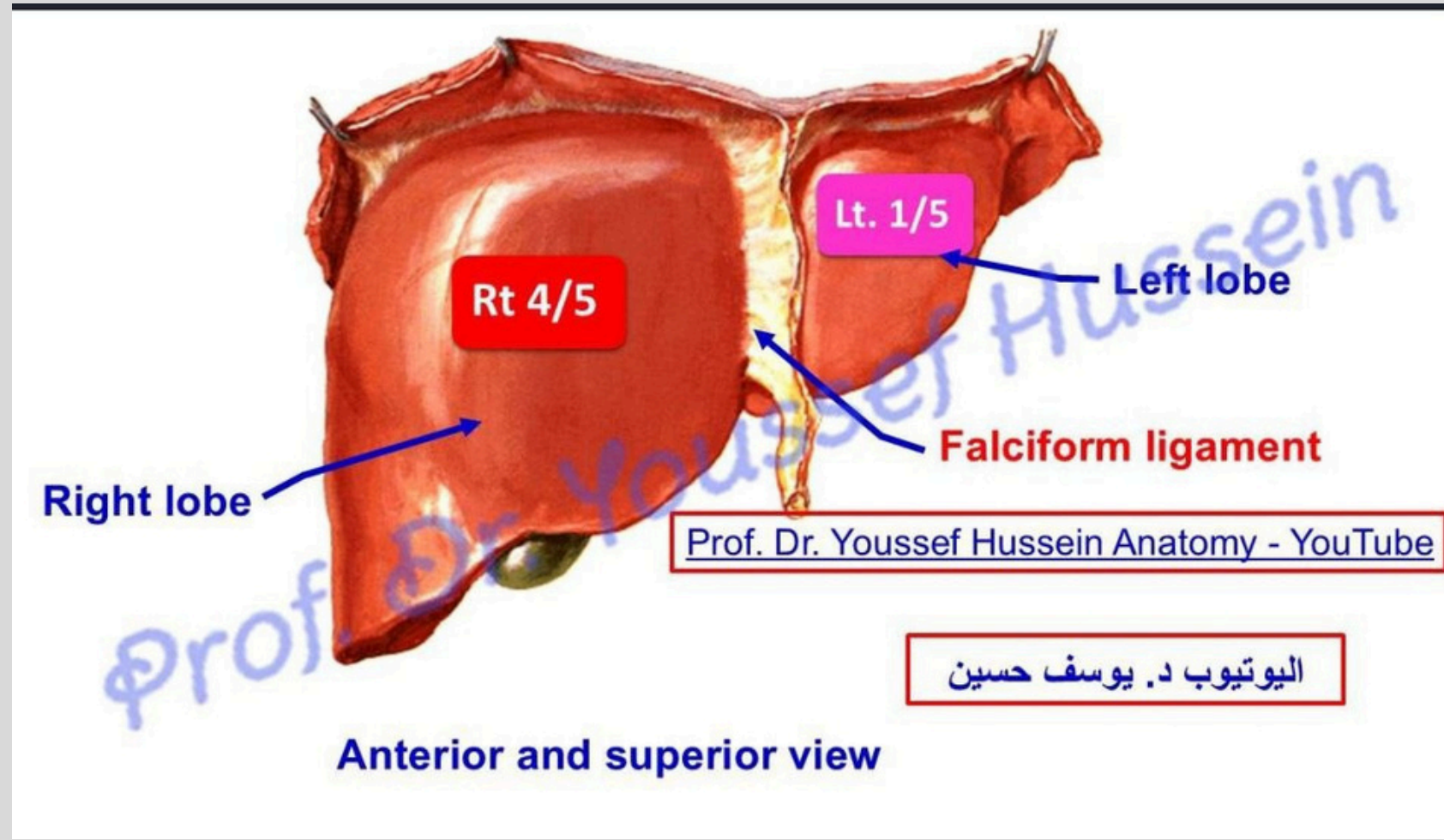
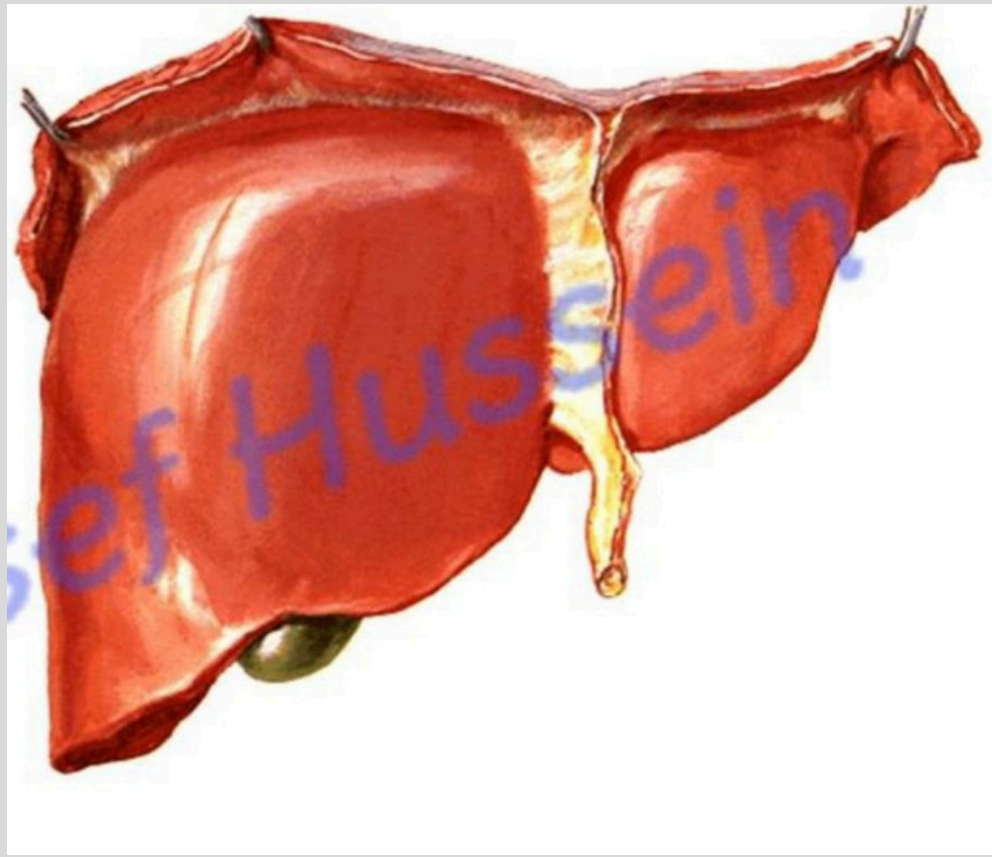


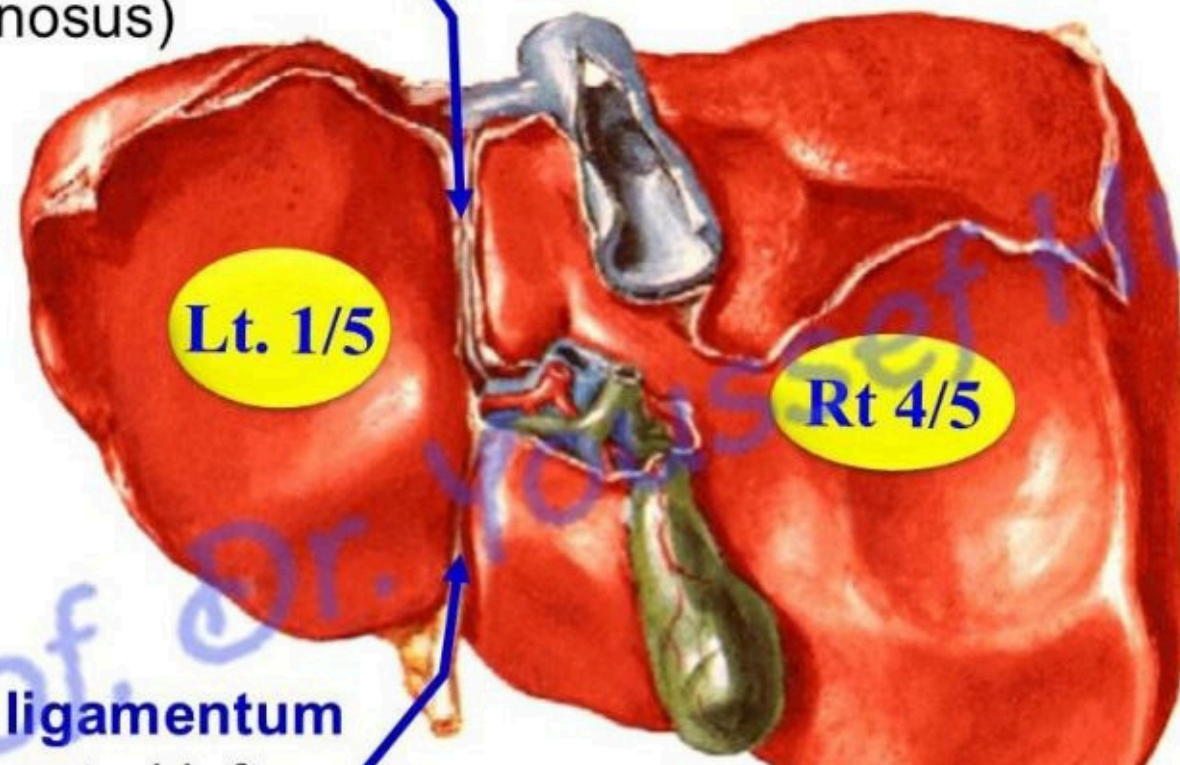
Lab anatomy 14





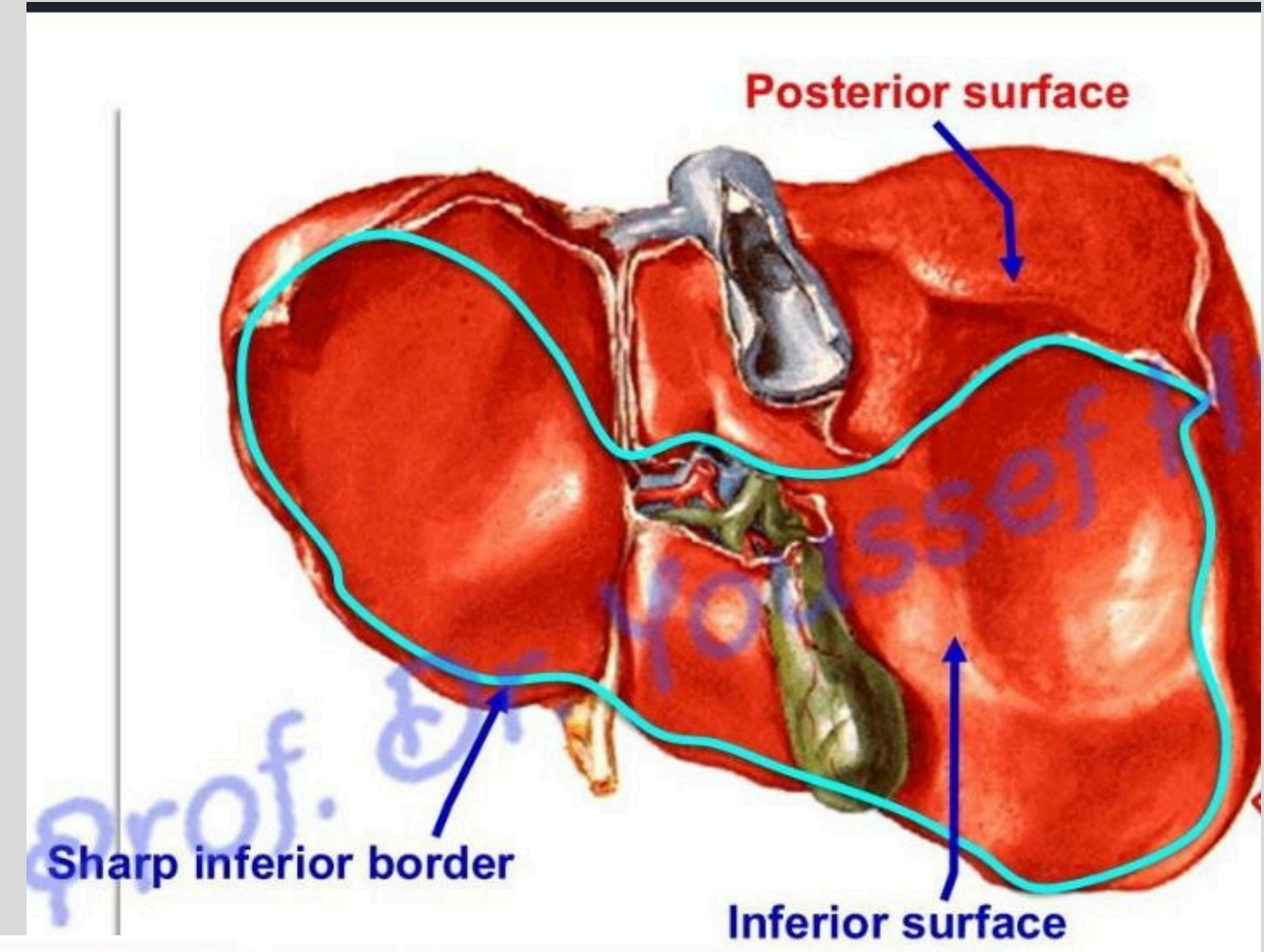
Fissure of ligamentum venosum (obliterated ductus venosus)

Posteroinferior view



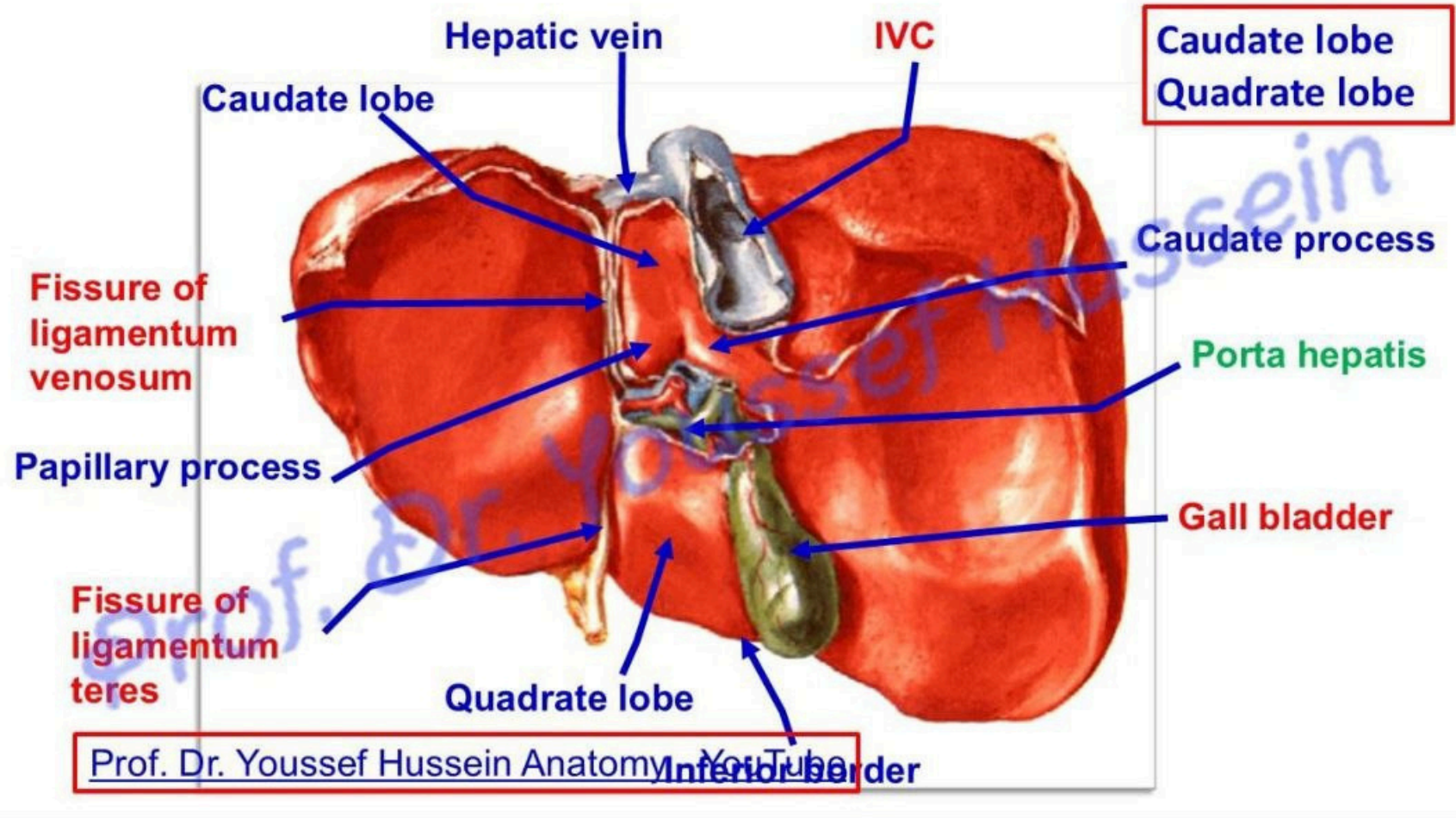
Fissure of ligamentum teres (obliterated left umbilical vein)

اليوتيوب د. يوسف حسين



Sharp inferior border

Inferior surface

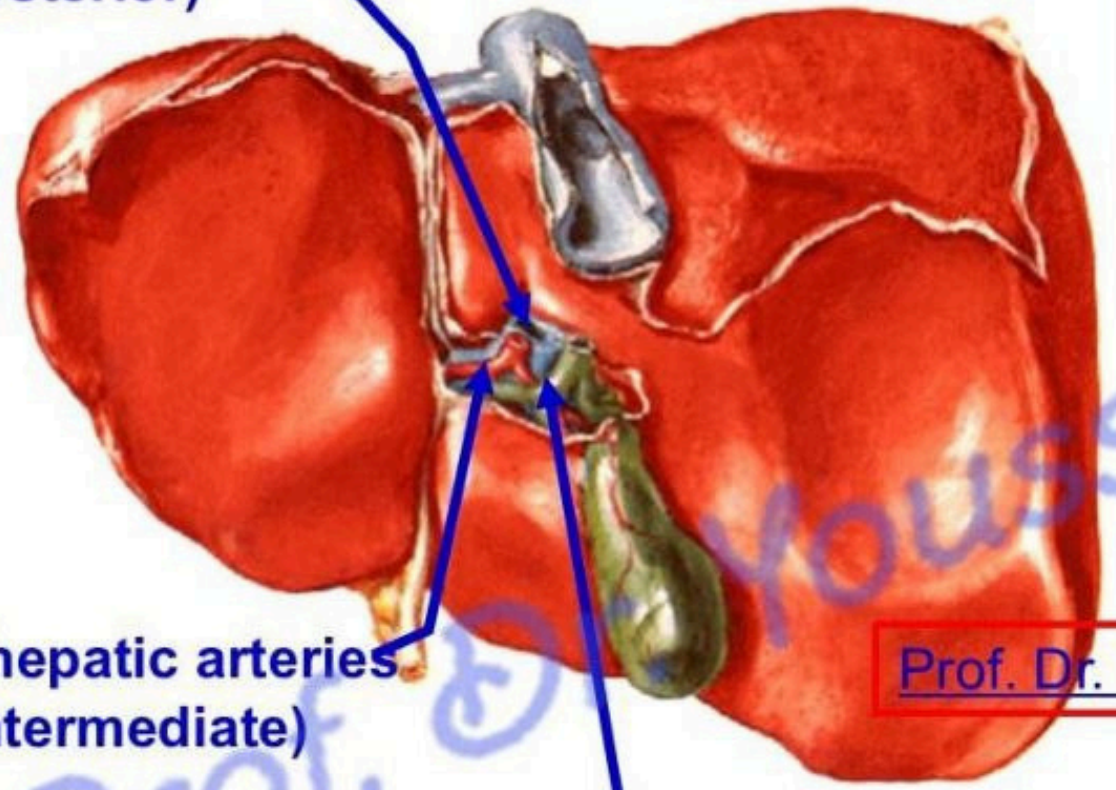


Caudate lobe
Quadrate lobe

Prof. Dr. Youssef Hussein Anatomy YouTube



2 portal veins
(posterior)

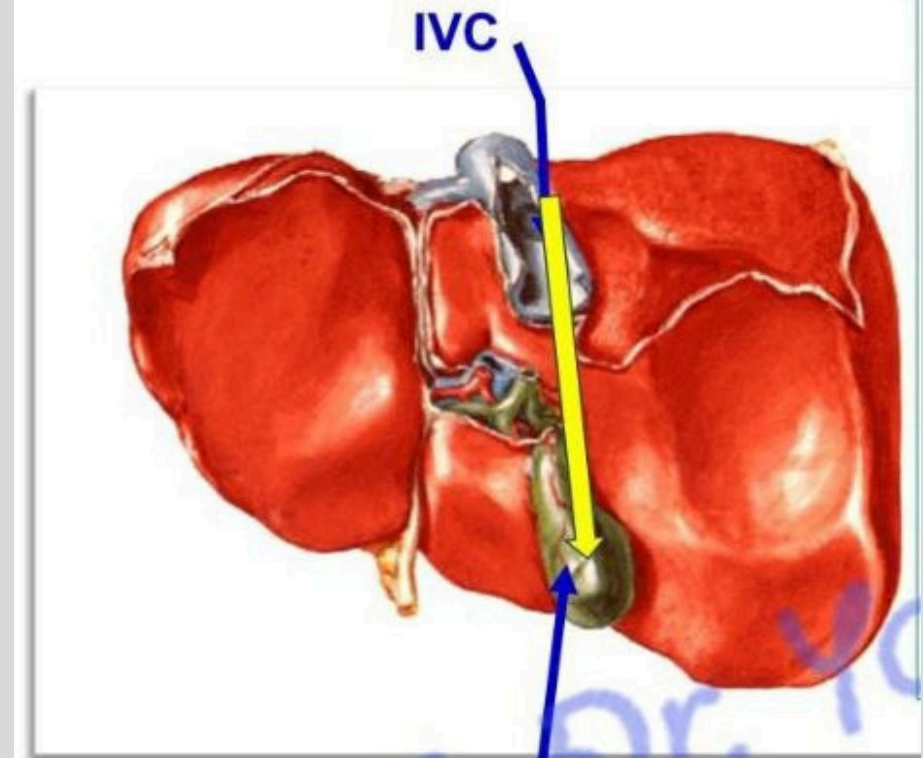


2 hepatic arteries
(intermediate)

2 hepatic ducts
(anterior)

Prof. Dr. Youssef Hussein

- **Porta hepatis** (hilum of the liver) contains **VAD**
- **Portal veins (posterior)**
- **Hepatic arteries (intermediate)**
- **Hepatic ducts (anterior)**
- **Sympathetic plexus around artery**



Gall bladder

Posterior relations of liver

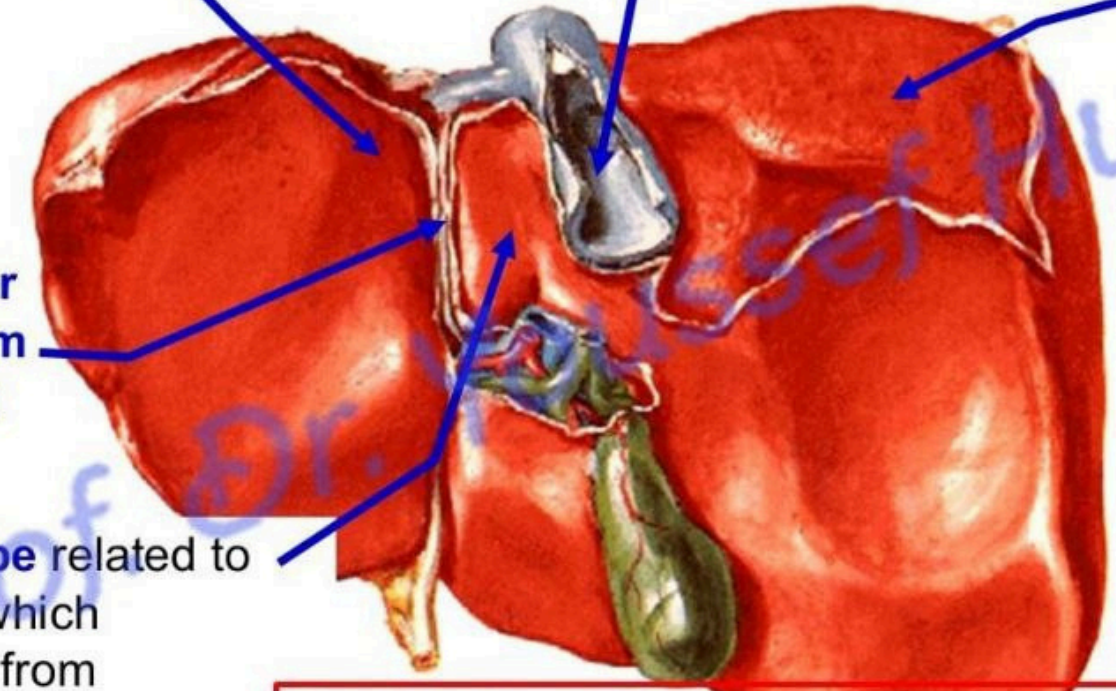
Esophageal impression

IVC

Bare area

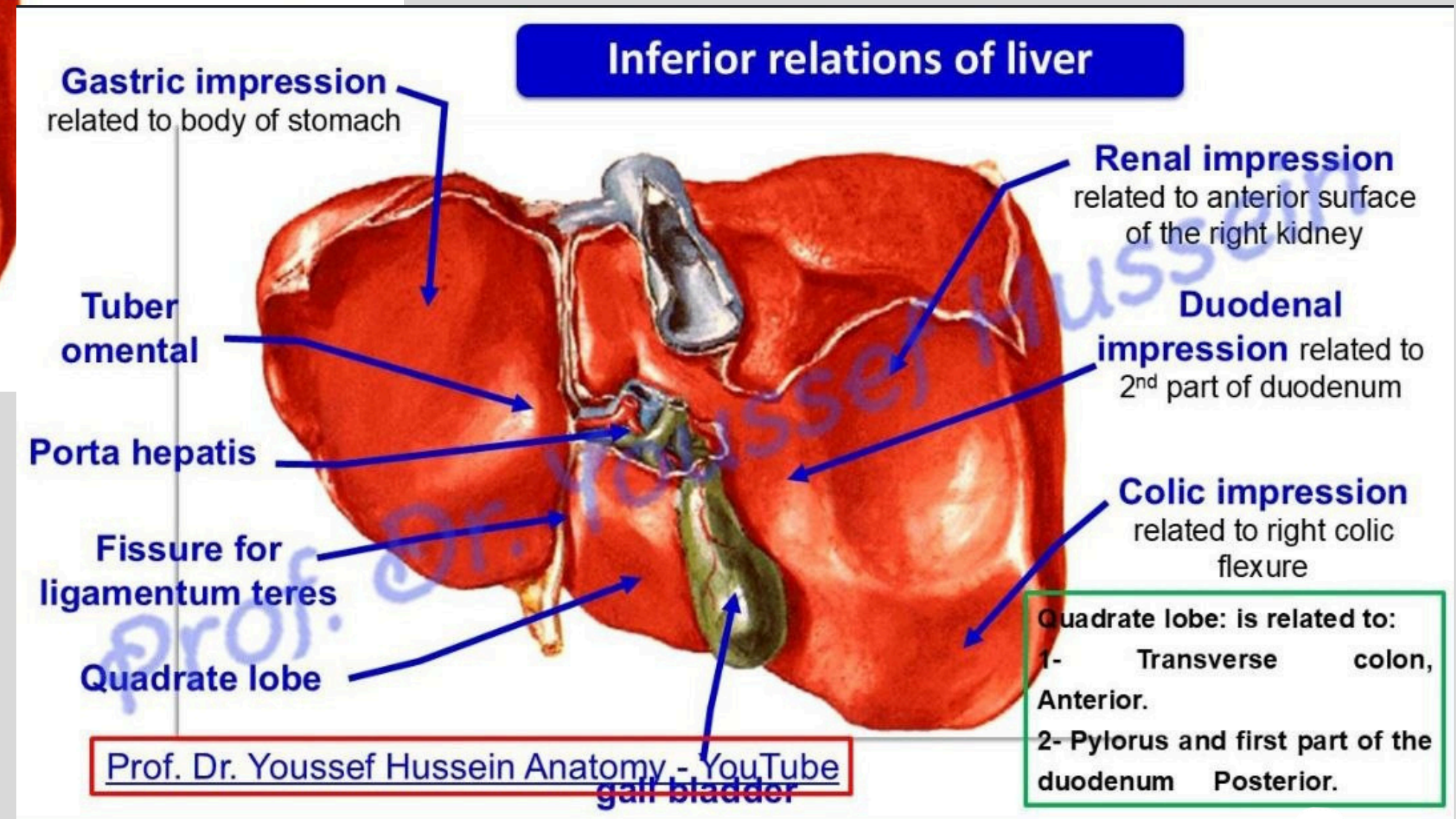
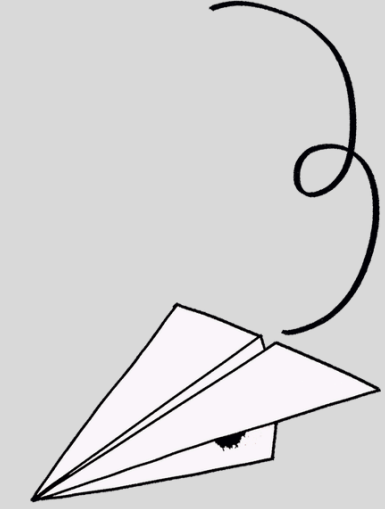
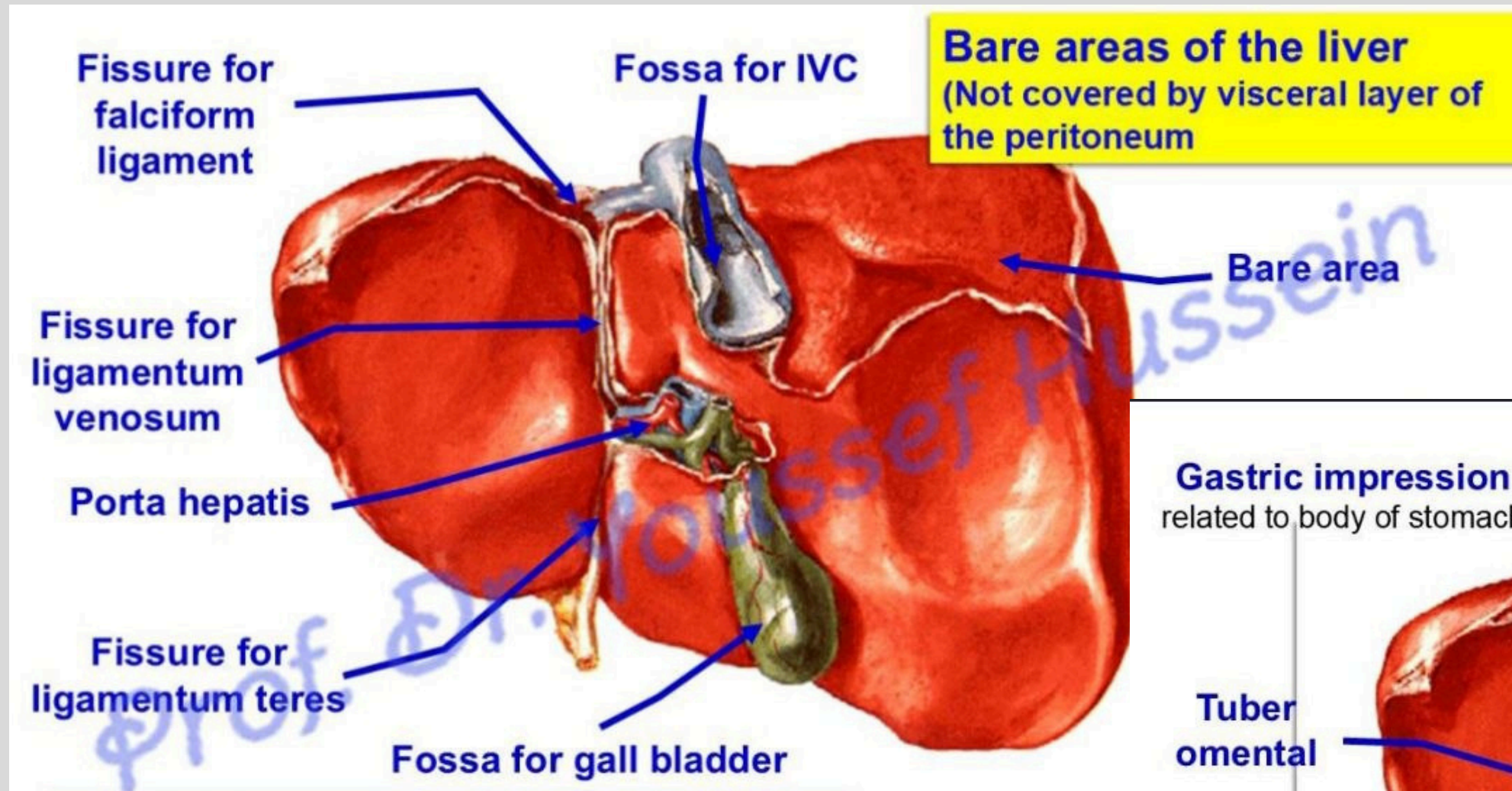
Fissure for ligamentum venosum

Caudate lobe related to diaphragm which separated it from descending thoracic aorta

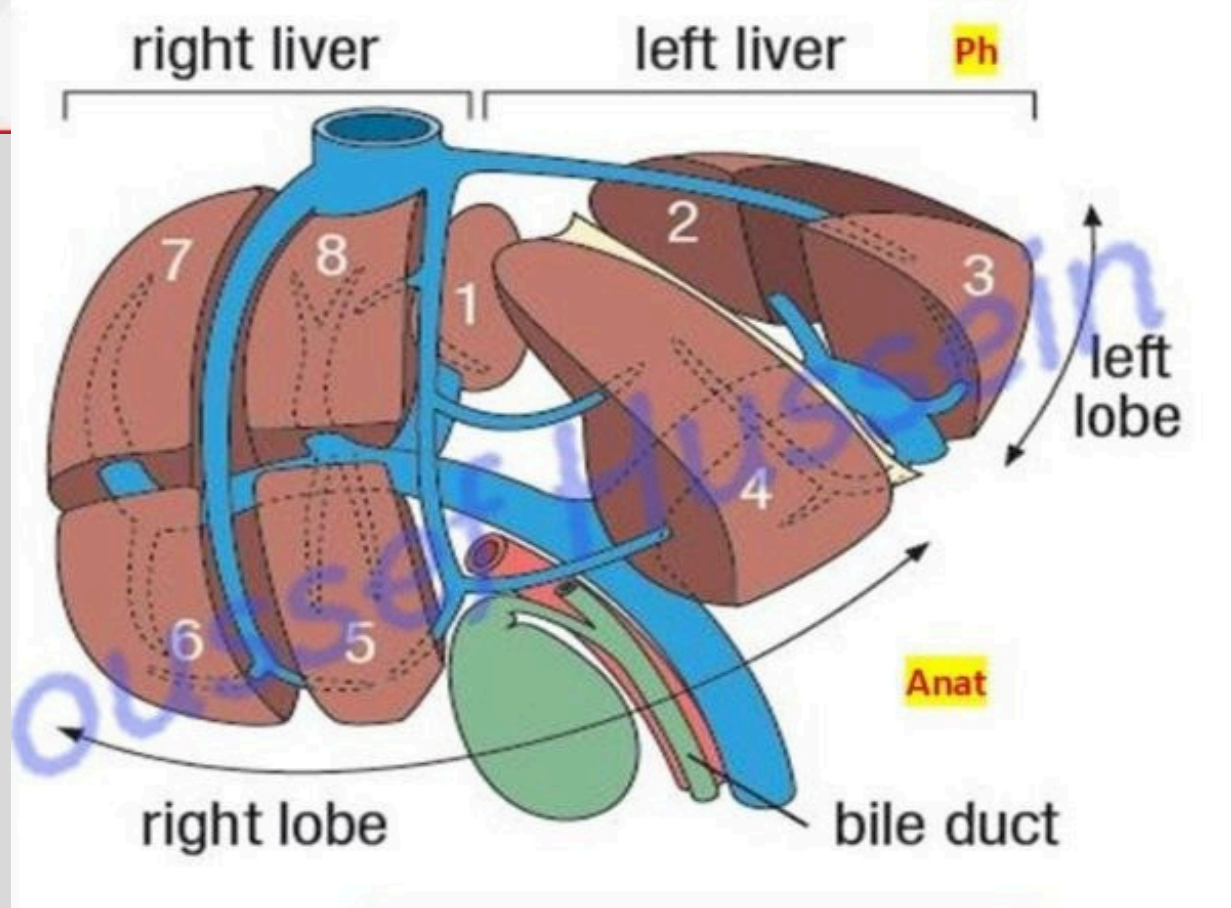
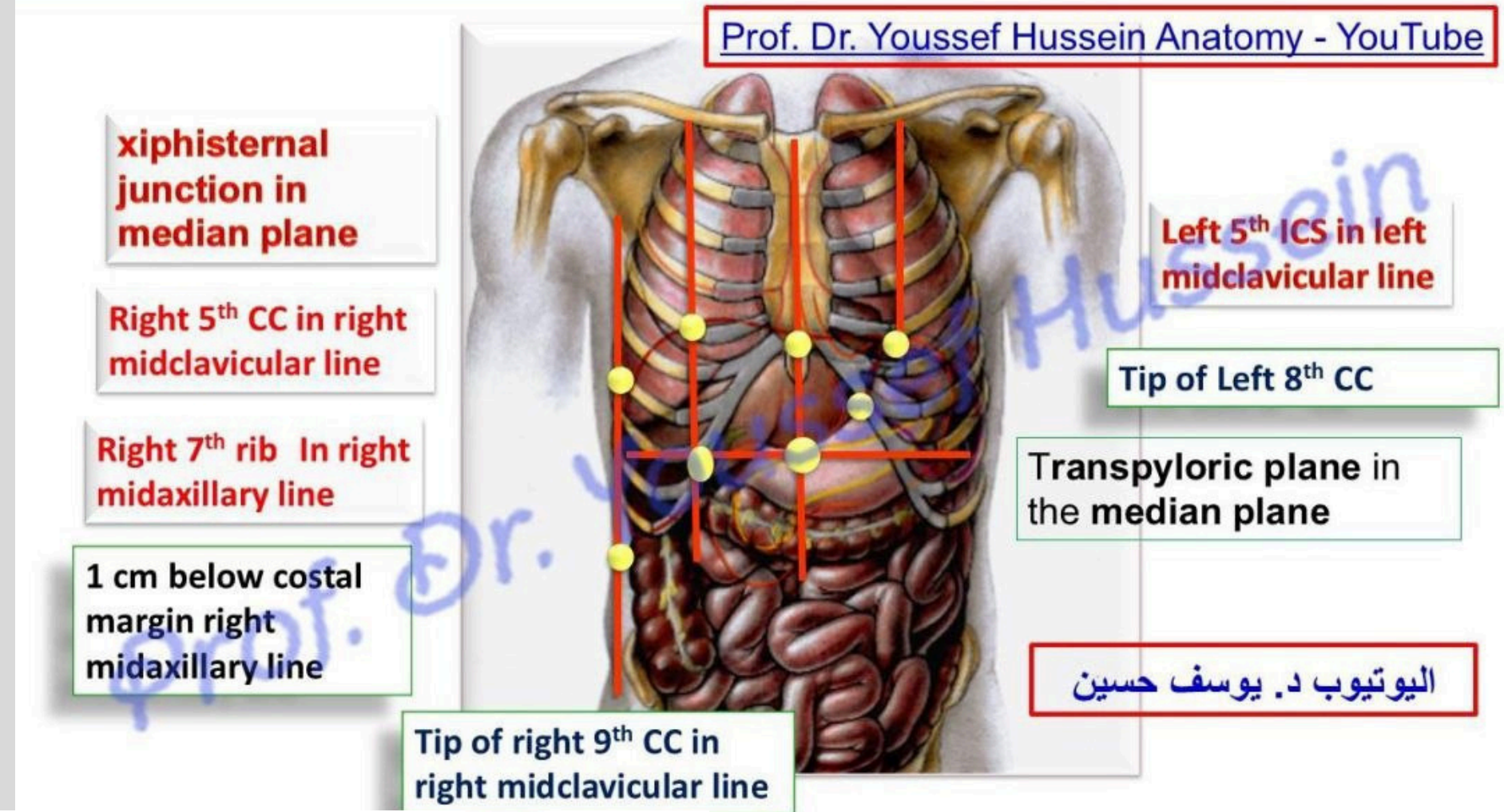
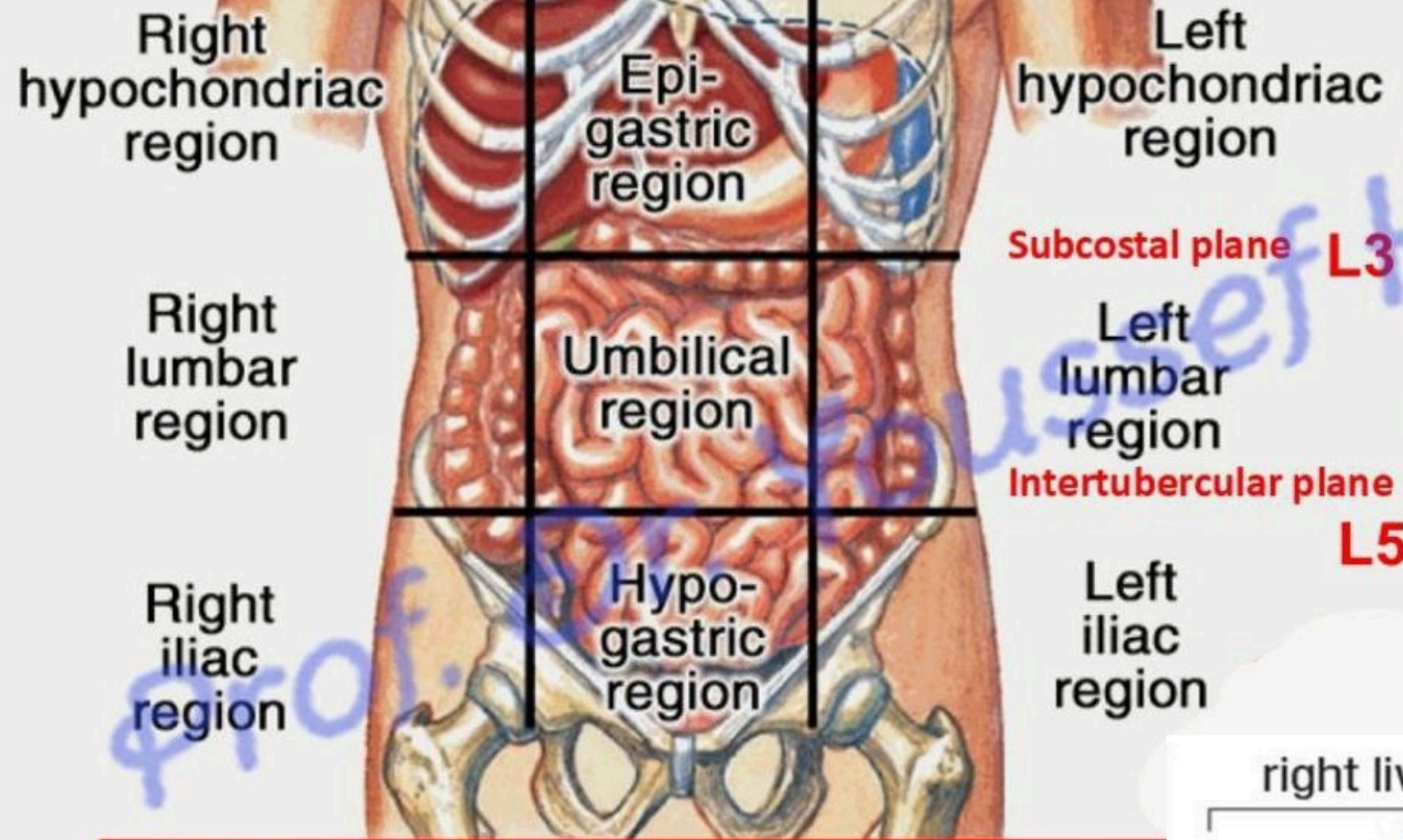


البيوتوب د. يوسف حسين

Prof. Dr. Youssef Hussein Anatomy - YouTube



Regions of Abdominal Area



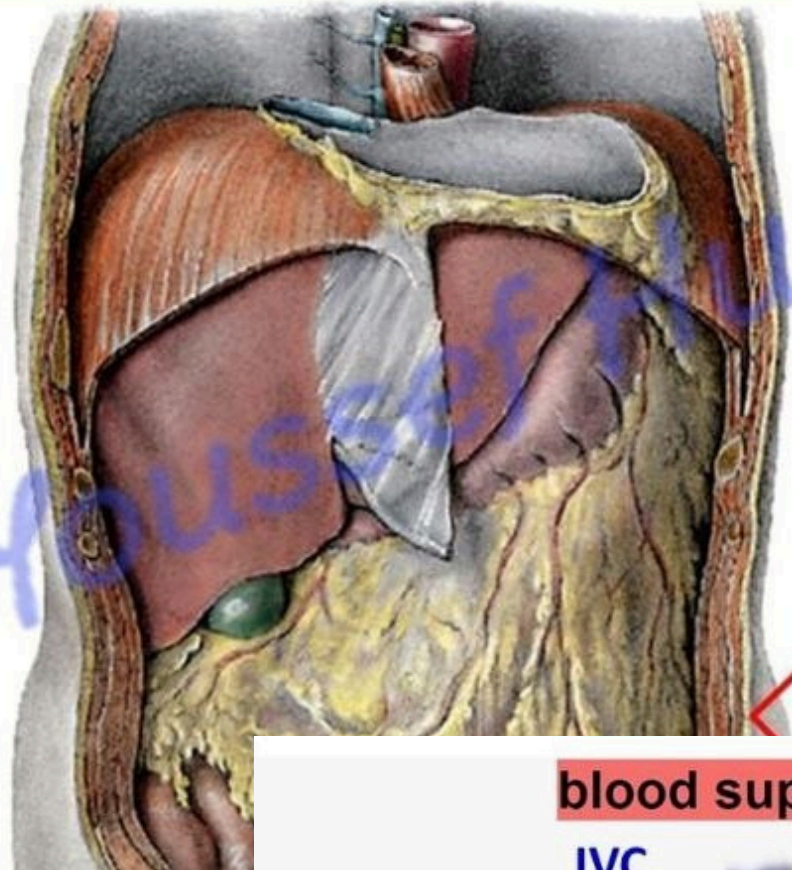
اليوتيوب د. يوسف حسين

Lesser omentum between port hepatis and lesser curvature of stomach

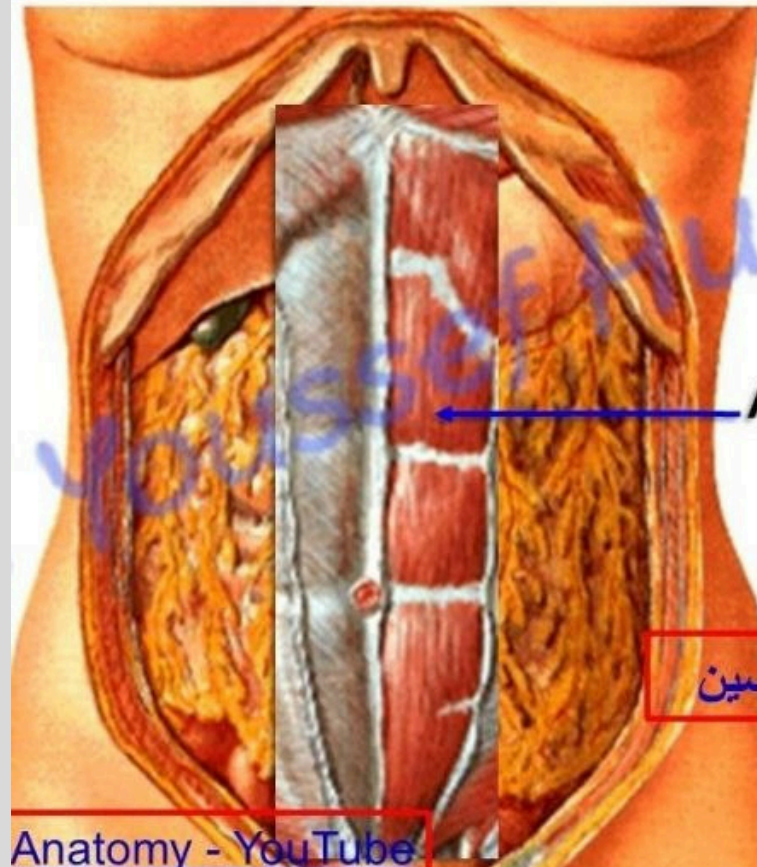
In the right free margin of lesser omentum (VAD)

- 1- Portal vein (post).
- 2- Hepatic artery.
- 3- Bile duct.

Superior relations of liver



Anterior relations of liver

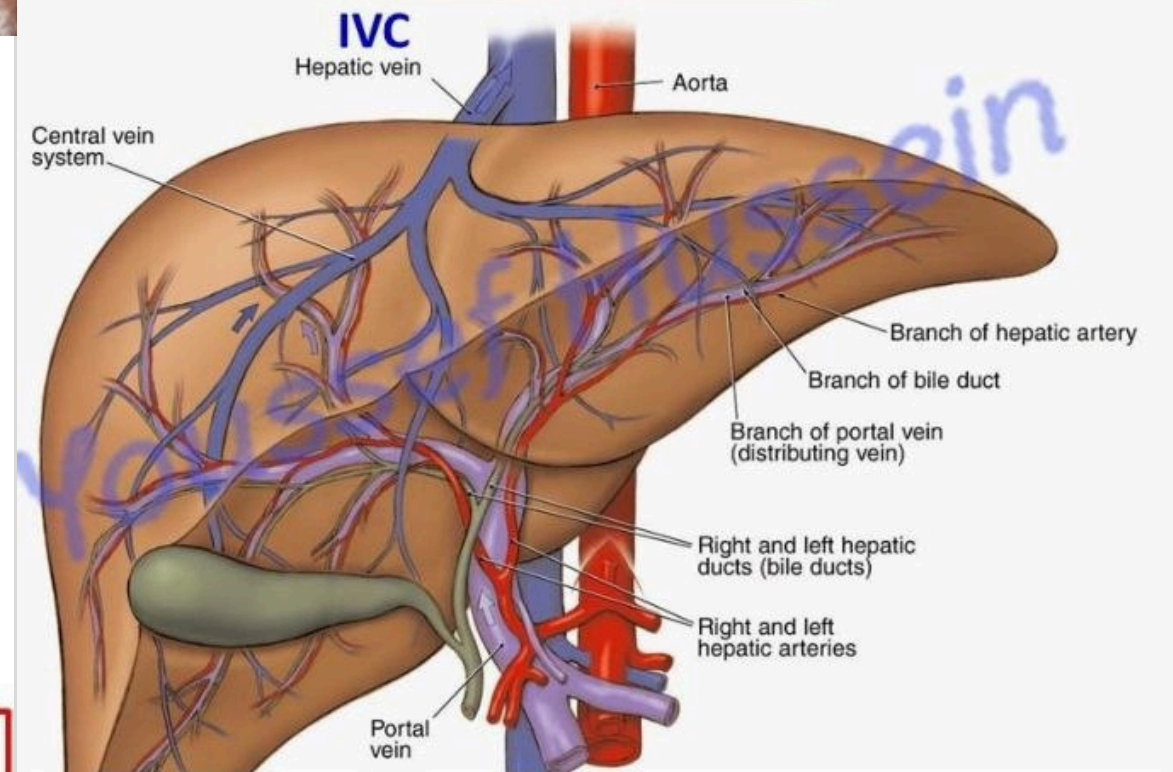


Anterior abdominal wall

اليوتيوب د. يوسف حسين

Anatomy - YouTube

blood supply to liver



بالتوفيق... لا تنسونا من صالح دعائكم