

This image shows?

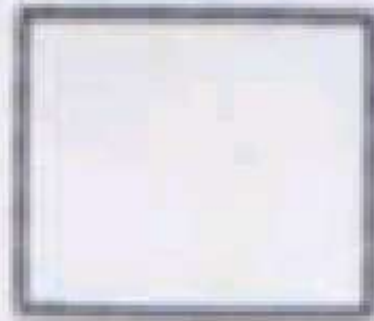


Select one:

- ☐ a. Group A streptococci.
- ☐ b. *N. gonorrhoeae*.
- ☐ c. *T. pallidum*.
- ☐ d. Group B streptococci.
- ☒ e. *Candida*.

This test is used to detect?

**Nitrite  
60 sec**



**neg.**



**pos.**

**Any pink color  
is considered  
positive.**

Select one:

- ☒ a. Bacteria in urine.
- ☐ b. Fungus in urine.
- ☐ c. Sugar in urine.
- ☐ d. Protein in urine.
- ☐ e. Blood in urine.

. This test is positive when the leukocyte count more than ?

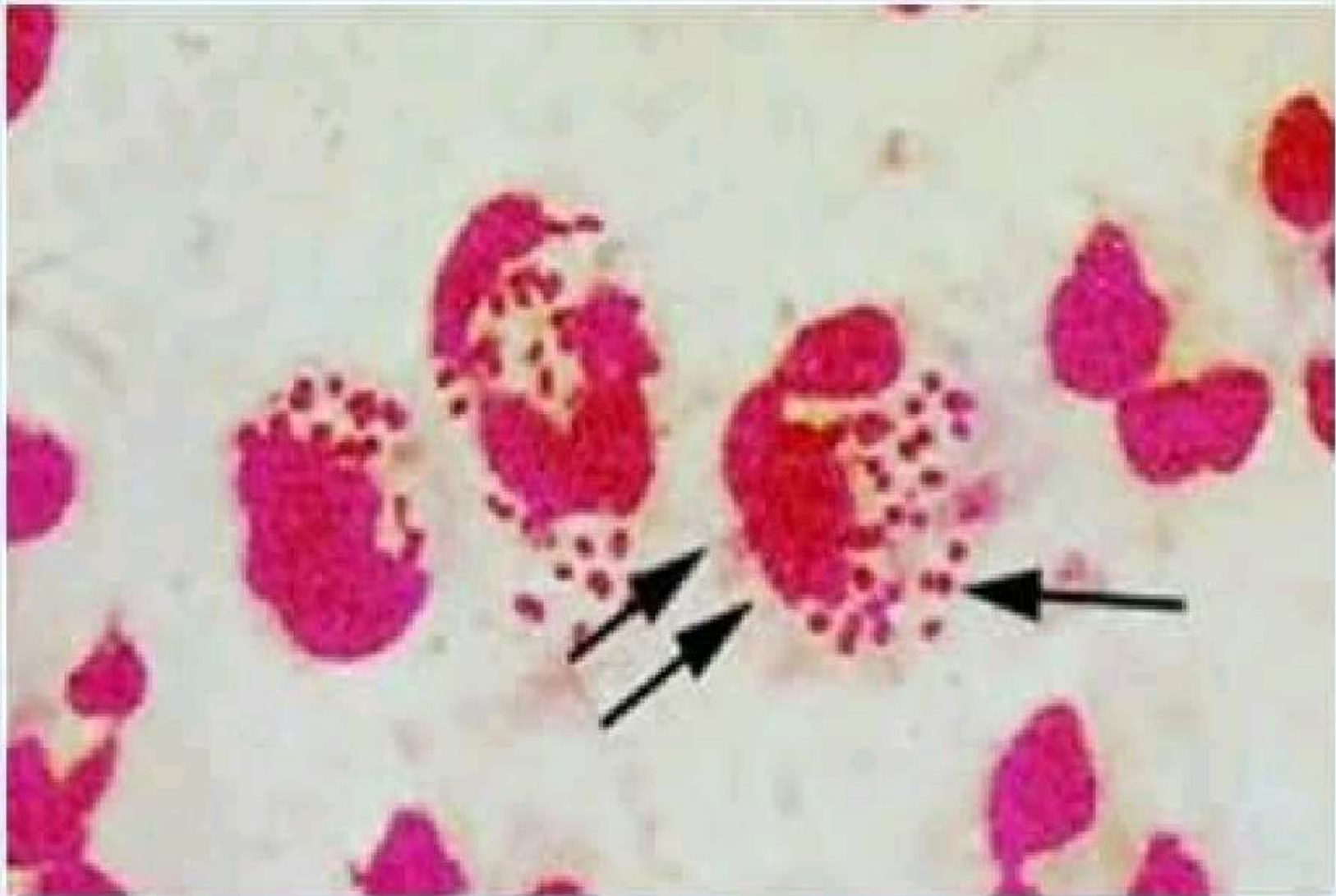


Select one:

- ☐ a. 10 leucocytes/hpf.
- ☐ b. 9 leucocytes/hpf.
- ☐ c. 15 leucocytes/hpf.
- ☒ d. 5 leucocytes/hpf.
- ☐ e. 25 leucocytes/hpf.



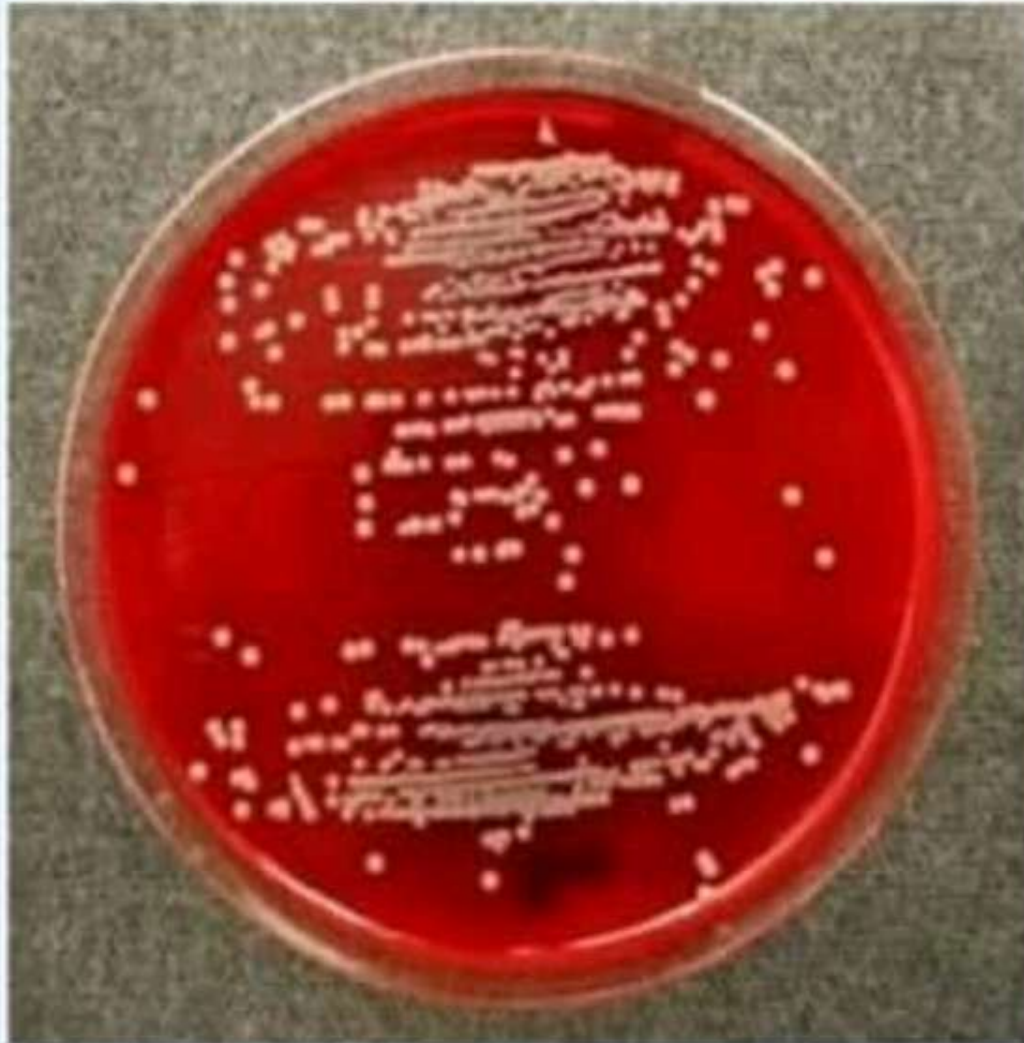
This staining pattern indicates?



Select one:

- ☐ a. Group A streptococci.
- ☒ b. *N. gonorrhoeae*.
- ☐ c. *T. pallidum*.
- ☐ d. Group B streptococci.
- ☐ e. *Candida*.

Which of the following colony counts from a midstream urine sample is indicative for UTI?

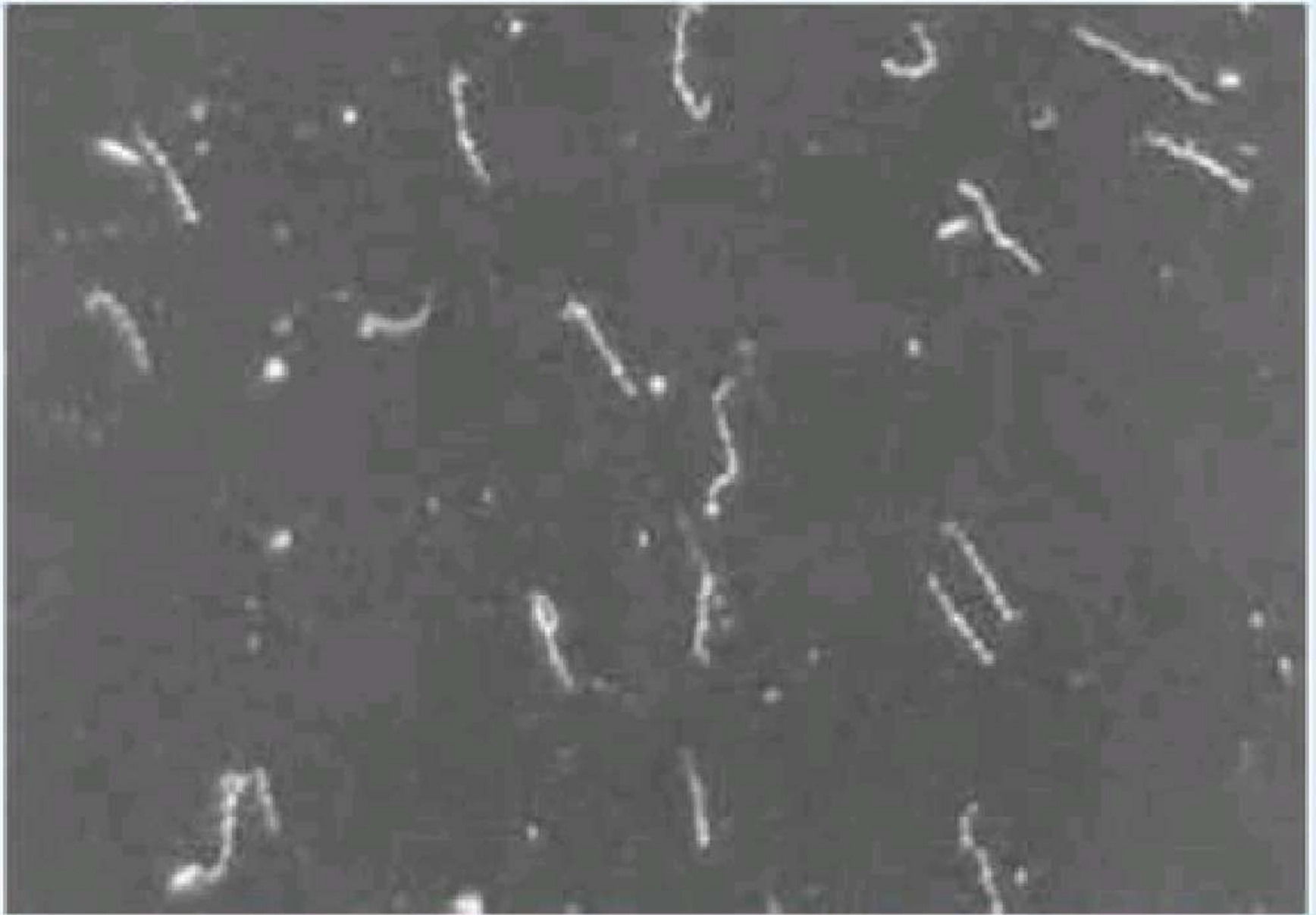


Select one:

- ☒ a.  $\geq 10^5$  CFU/ml.
- ☐ b.  $\geq 10^3$  CFU/ml.
- ☐ c.  $\geq 10^2$  CFU/ml.
- ☐ d.  $\geq 10^8$  CFU/ml.
- ☐ e.  $\geq 10^6$  CFU/ml.

Activate W  
Go to Settings

This image shows?

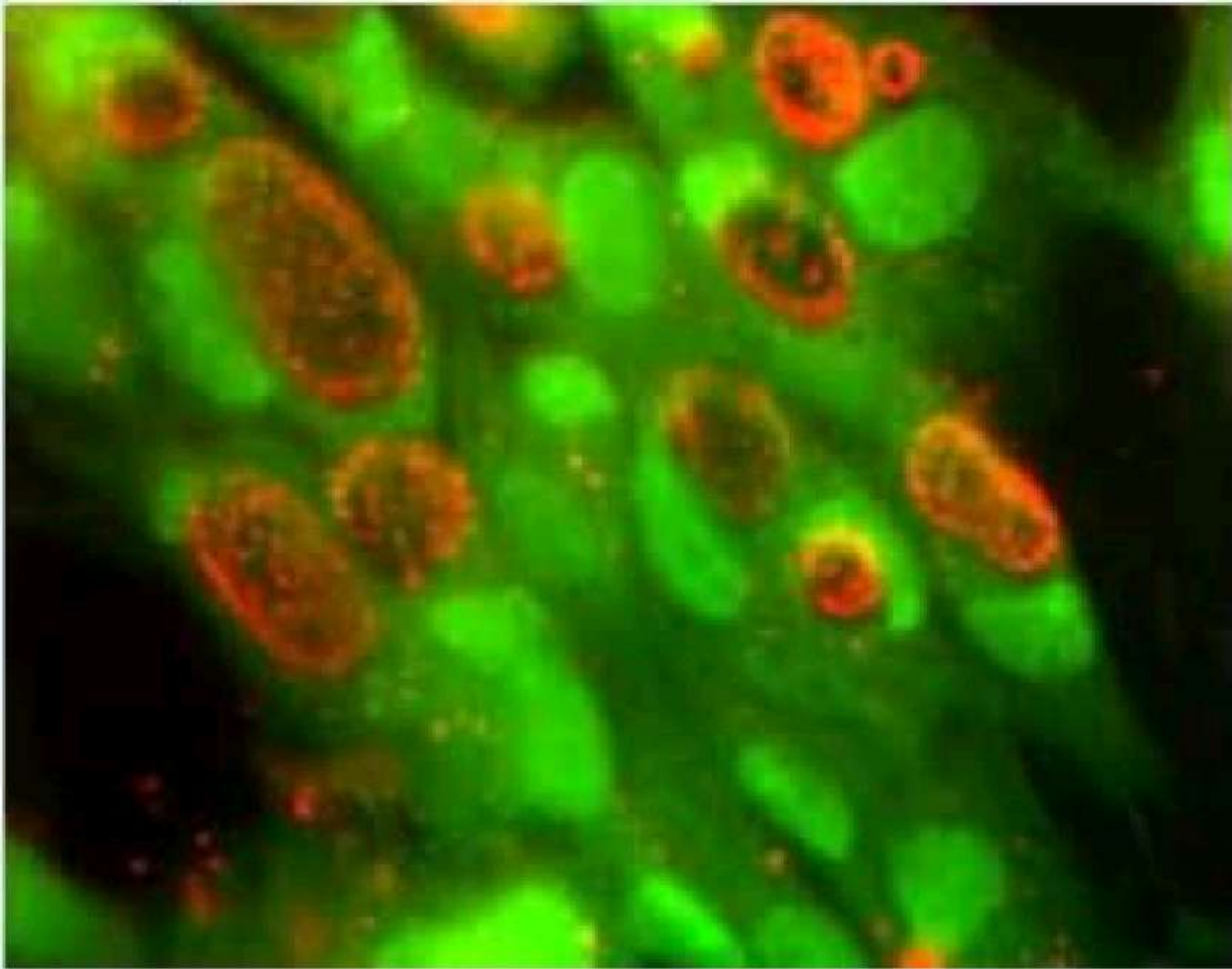


Select one:

- ☐ a. Group A streptococci.
- ☐ b. N. gonorrhoeae.
- ☒ c. T. pallidum.
- ☐ d. Group B streptococci.
- ☐ e. Candida.



This image indicates?



Select one:

- ☐ a. Gonorrhea.
- ☒ b. Chlamydia infection.
- ☐ c. Syphilis.
- ☐ d. Non-gonococcal urethritis.
- ☐ e. Artifact.

This test is used to diagnose?



Select one:

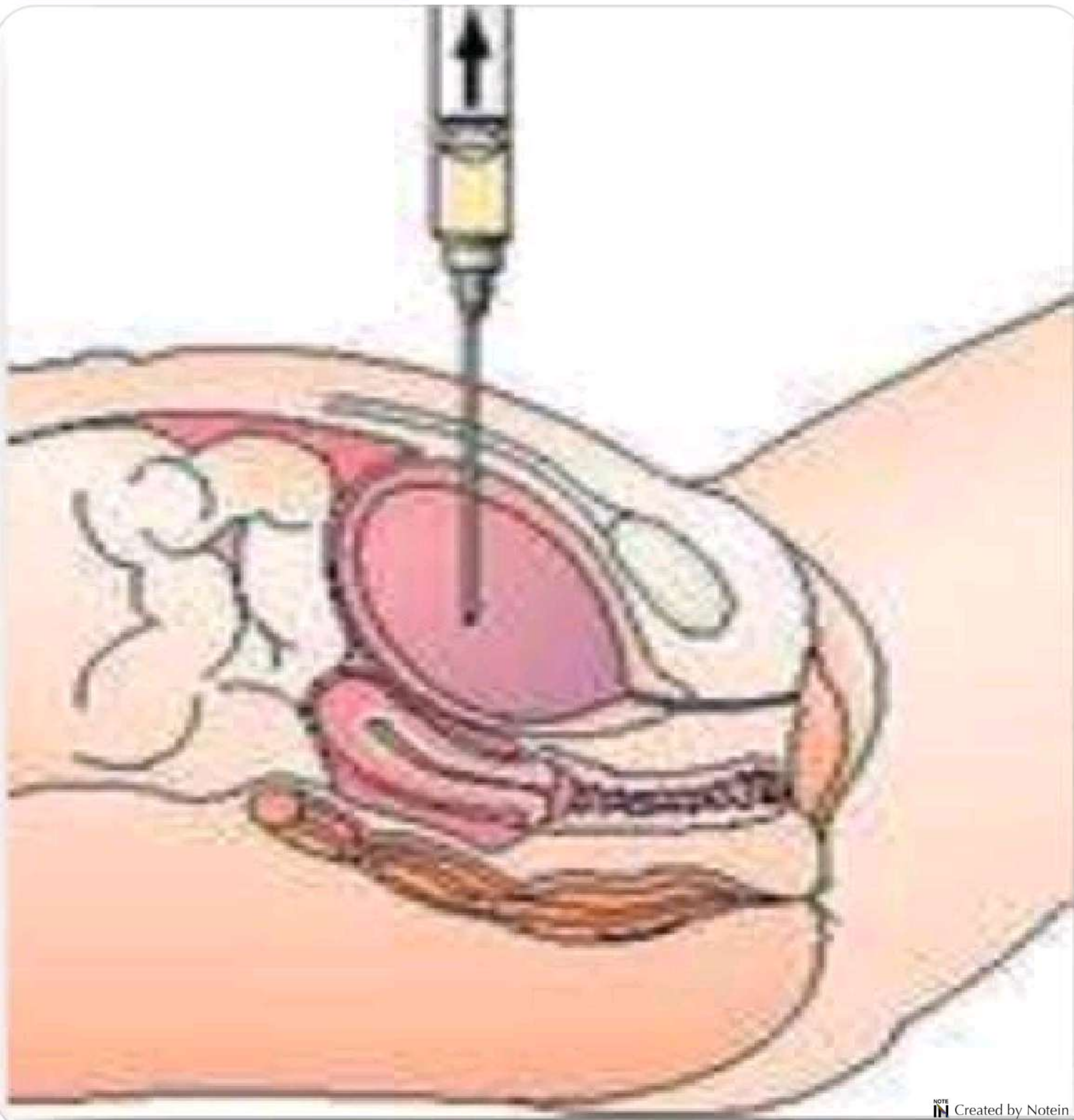
- ☐ a. Group A streptococci.
- ☐ b. *N. gonorrhoeae*.
- ☒ c. *T. pallidum*.
- ☐ d. Group B streptococci.
- ☐ e. *Candida*.



# WBC in urine



Any growth: الجواب



## 15- Bacterial culture from Midstream urine sample



a. > 100000 ✓

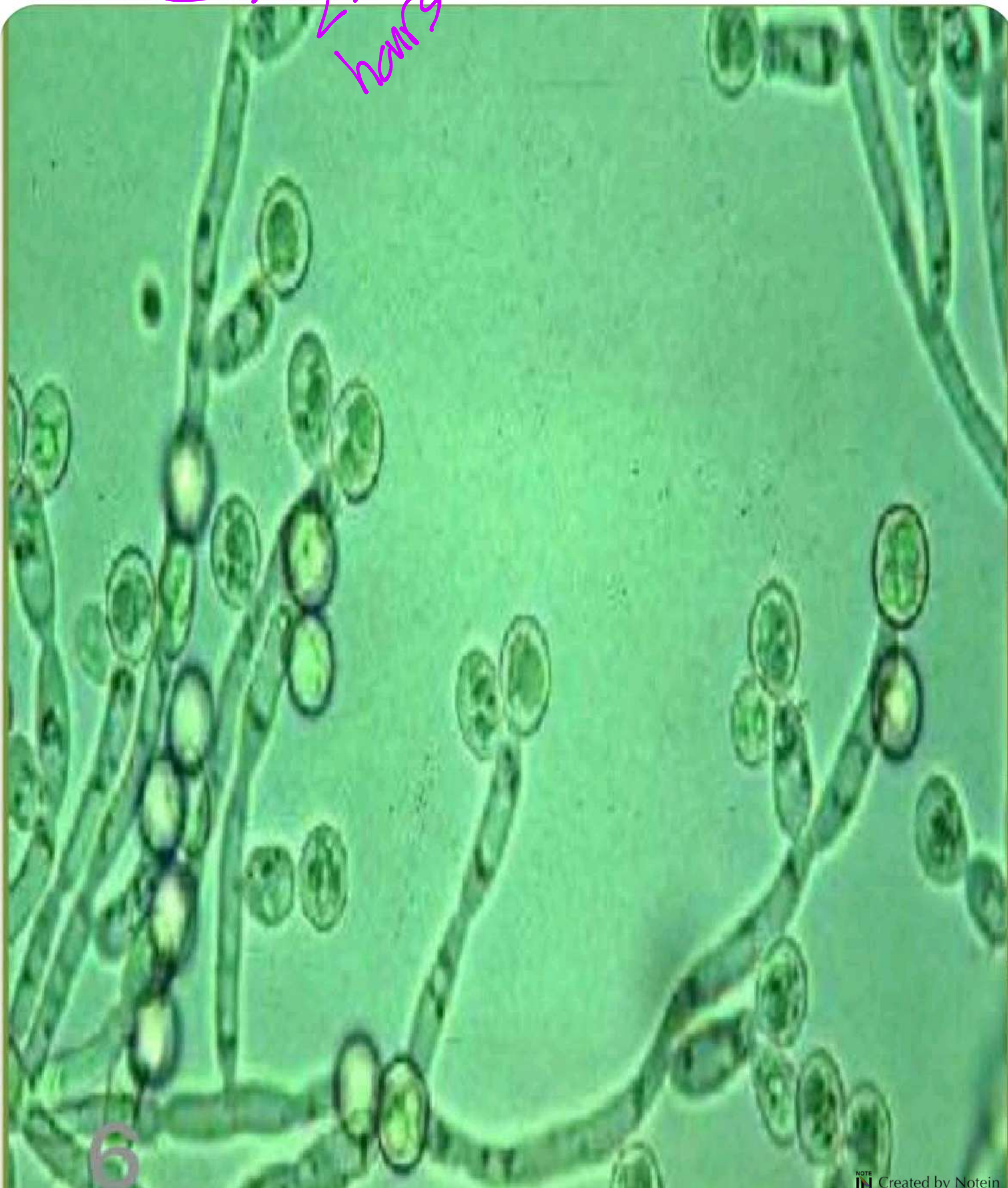
b. > 1000

c. > 100



37°C / 30 min

X 2-3  
hours



6

