

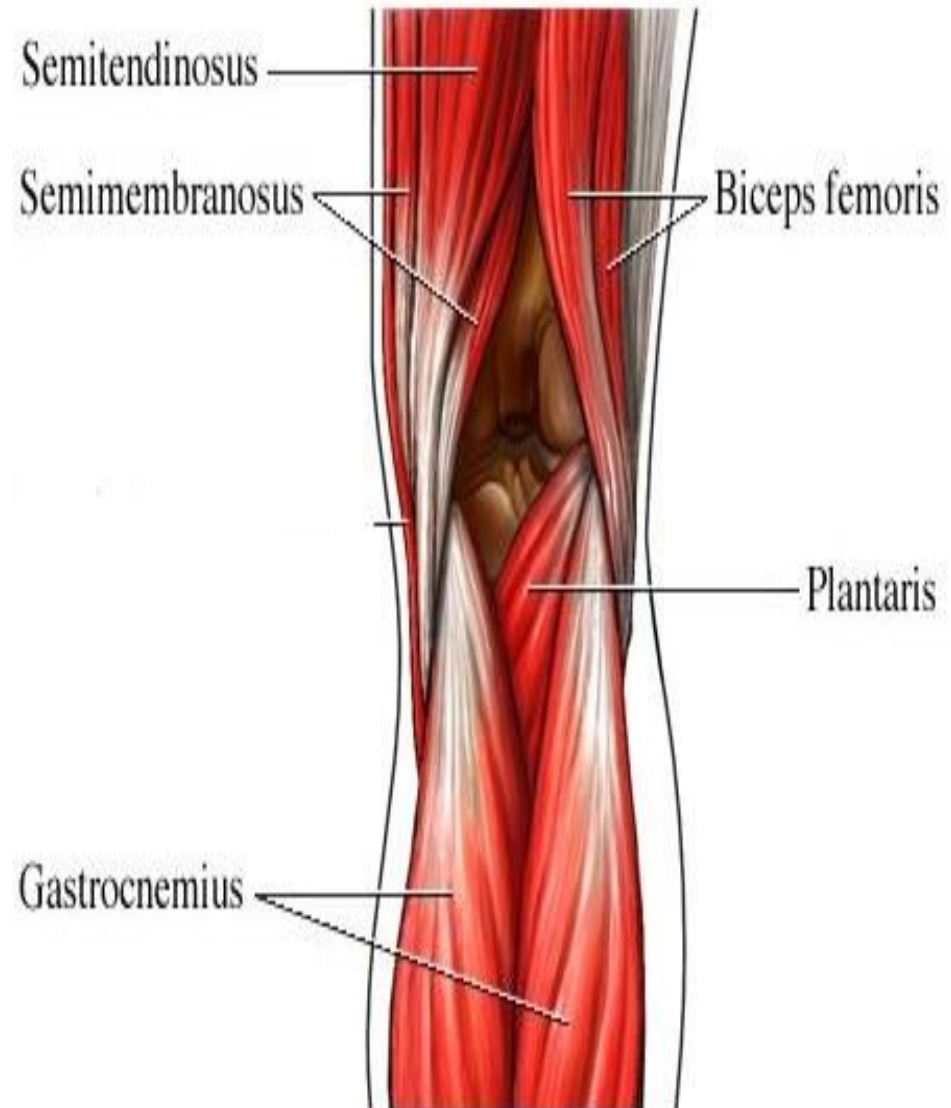
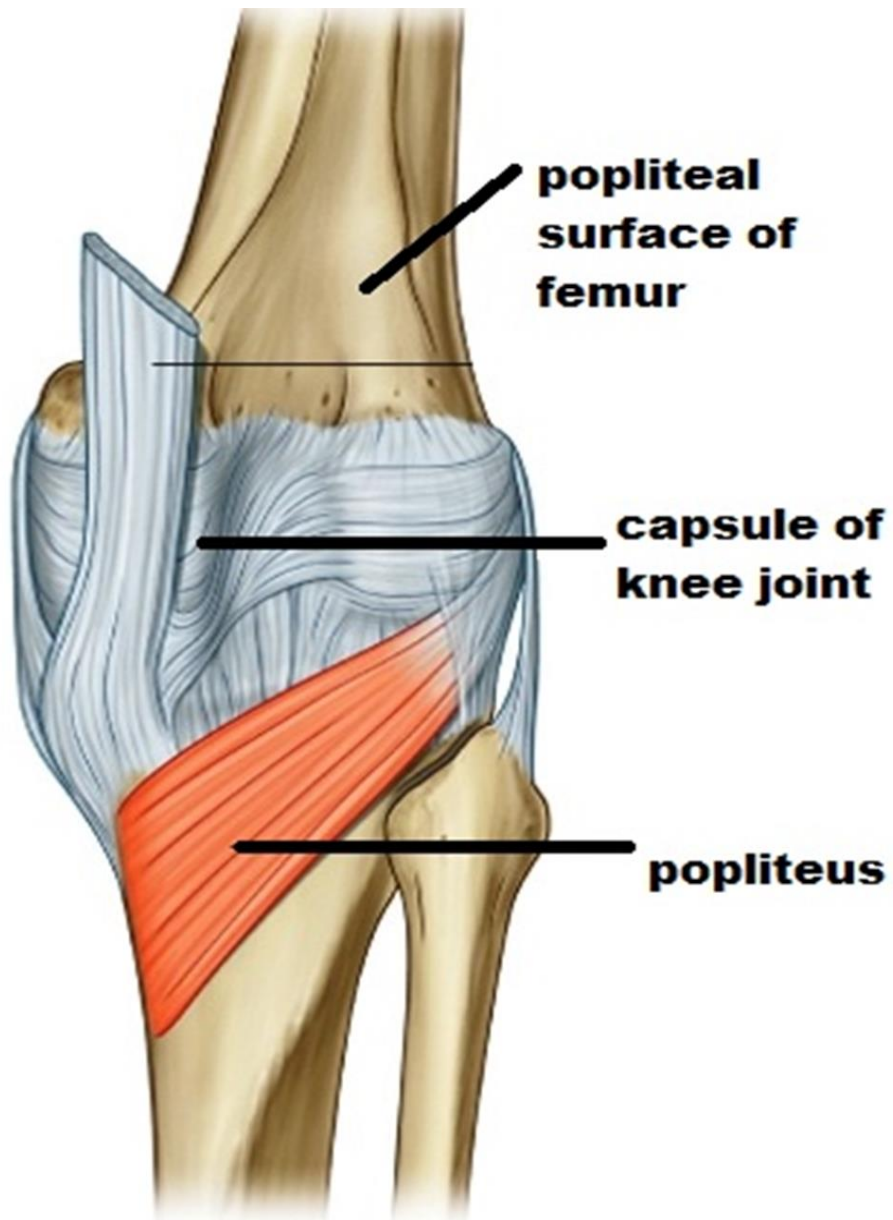
POPLITEAL FOSSA



BY

DR ABULMAATY MOHAMED
ASSISTANT PROFESSOR
ANATOMY & EMBRYOLOGY
MUTAH UNIVERSITY

POPLITEAL FOSSA



POPLITEAL FOSSA

DEF. & SITE:

tissue space behind lower part of thigh, knee & upper part of leg

BOUNDRIES :

diamond shaped with 4 borders

UPPER&MEDIAL

semimembranosus & semitendinosus

UPPER&LATERAL

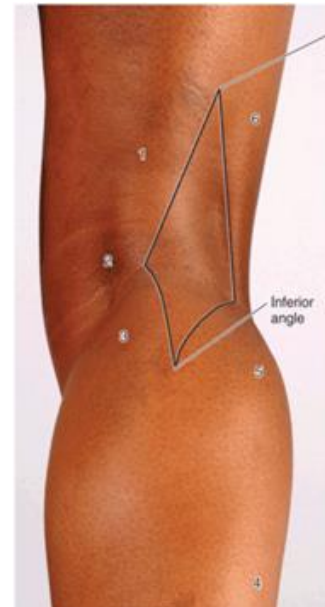
biceps femoris

LOWER& MEDIAL

medial head of gastrocnemius

LOWER&LATERAL

lateral head of gastrocnemius & plantaris



POPLITEAL FOSSA

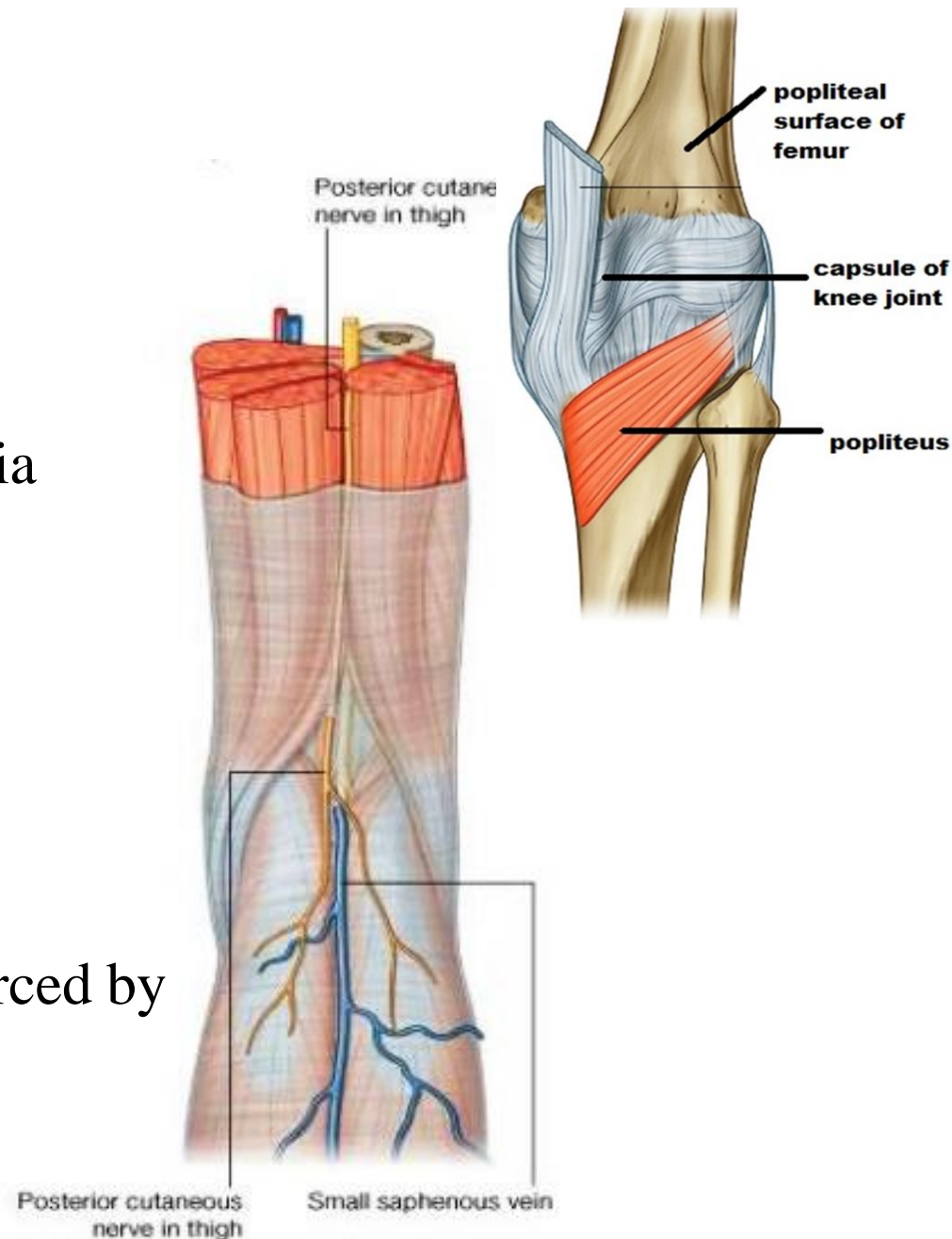
BOUNDRIES :

FLOOR

popliteal surface of femur
capsule of knee joint
popliteus muscle & covering fascia

ROOF

-skin
-superficial fascia: contain
short saphenous v.
post. cut. n. of thigh
-deep fascia (popliteal fascia): pierced by
short saphenous v.
lymphatics to popliteal LNs
post. cut. n. of thigh



POPLITEAL FOSSA

CONTENTS

1-popliteal art. & its branches :
deepest structure

2-popliteal V. & its tributaries:
superficial to the artery

3- popliteal L.Ns

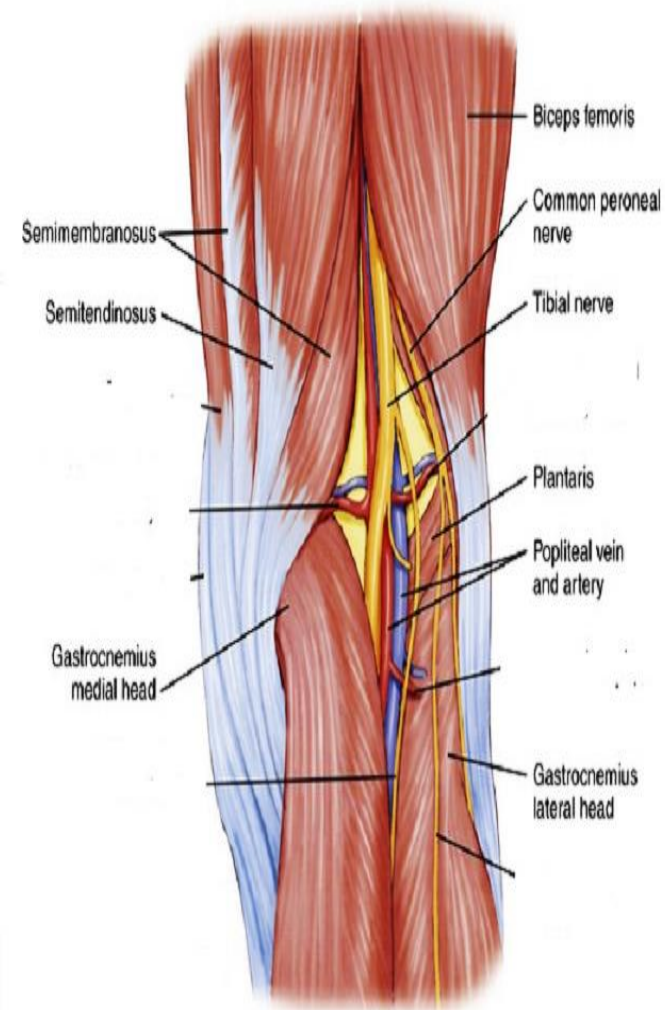
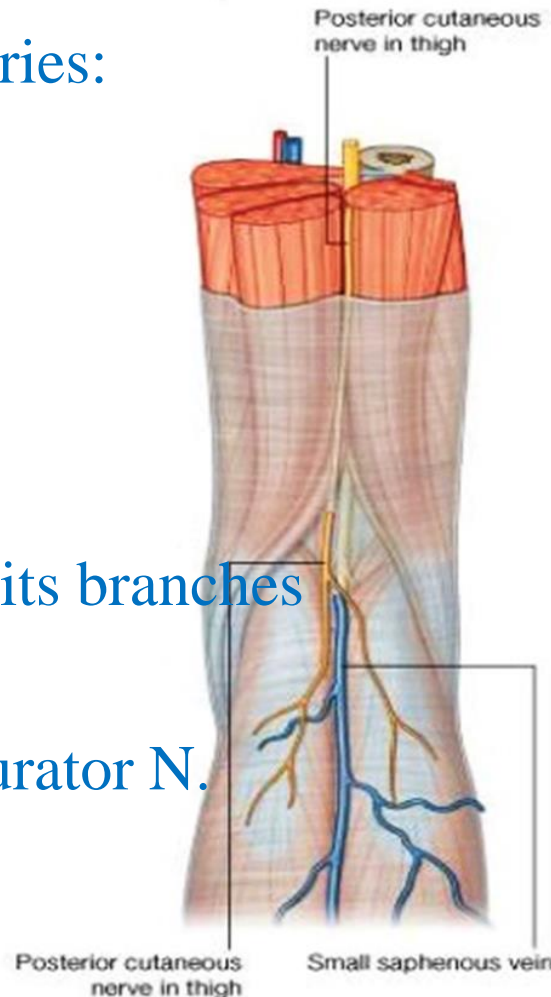
4- popliteal fat

5-tibial n. & its branches:
superficial to the vein

6-Common peroneal n. & its branches

7- post. cut. n. of thigh

8- Articular branch of obturator N.



POPLITEAL ARTERY

O : -continuation of femoral art
-at adductor opening

C : descends in popliteal fossa as deepest structure

E : -at lower border of popliteus
-give ant. & post tibial arteries

relations :

crossing over

popliteal surface of femur

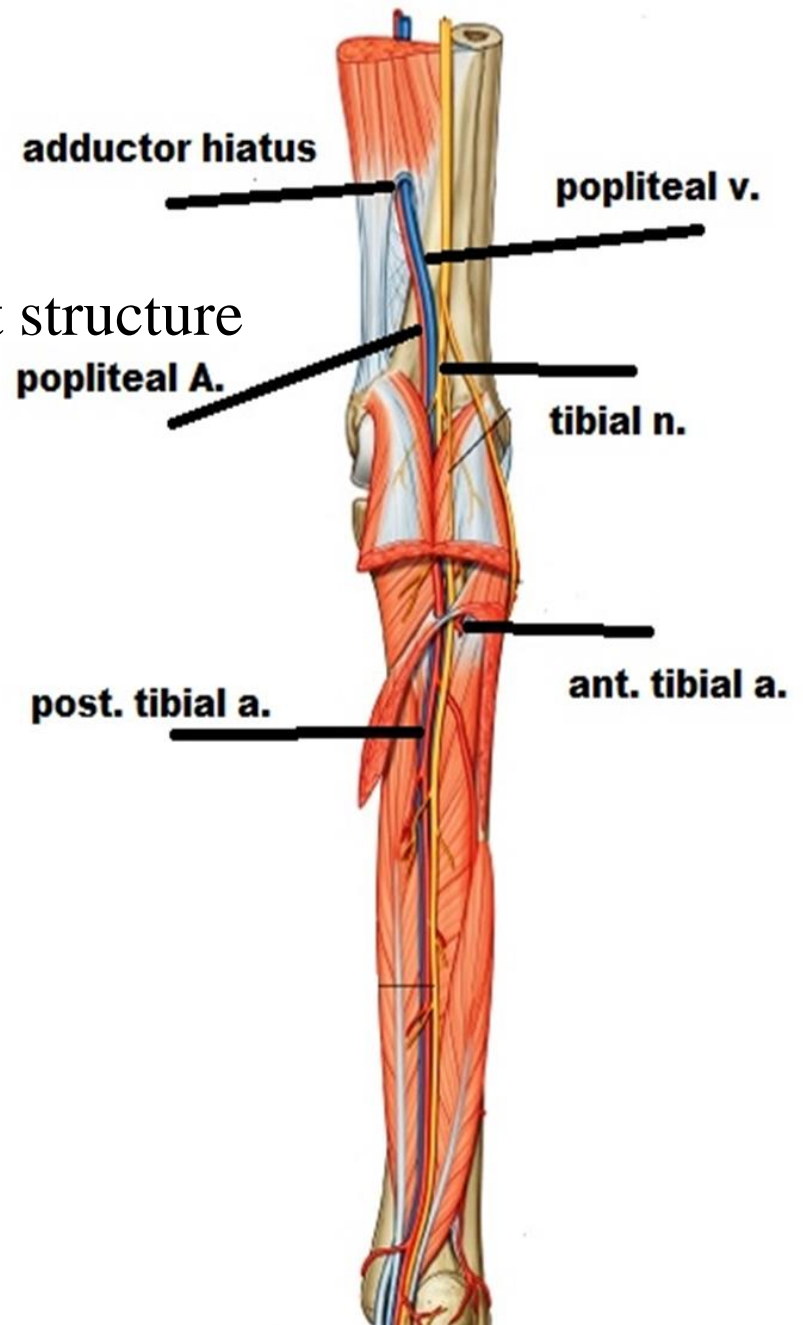
capsule of knee joint

popliteus muscle & covering fascia

crossed superficially by

popliteal v & tibial n

fasciae & skin



POPLITEAL ARTERY

branches :

A-muscular : to near muscles

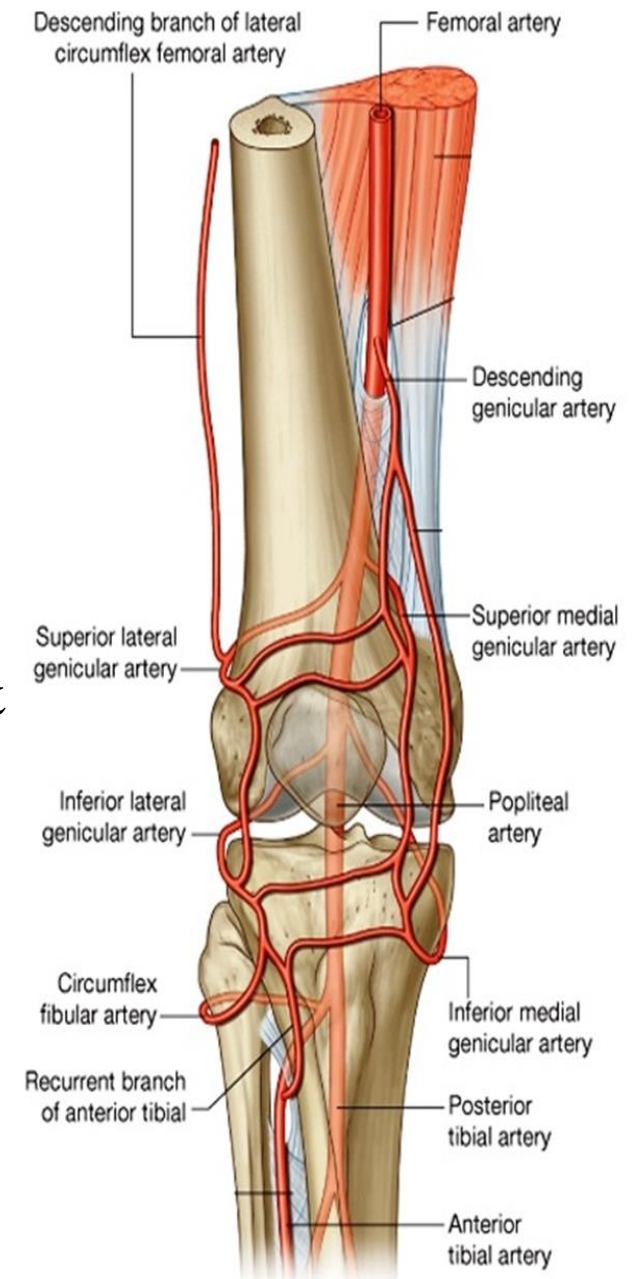
B-genicular : 5

superomedial , superoLateral

inferomedial , inferolateral

middle

they share in anastomosis around knee joint &
the middle br pierce oblique popliteal lig.
to supply cruciate lig.



TIBIAL NERVE IN POPLITEAL FOSSA

O: larger terminal division of sciatic N

C & r:

- enter fossa at upper angle
- descends vertically lateral, superficial then medial to popliteal vessels
- Leave fossa at lower angle to enter back of leg (deep to soleus) as post. tibial n..

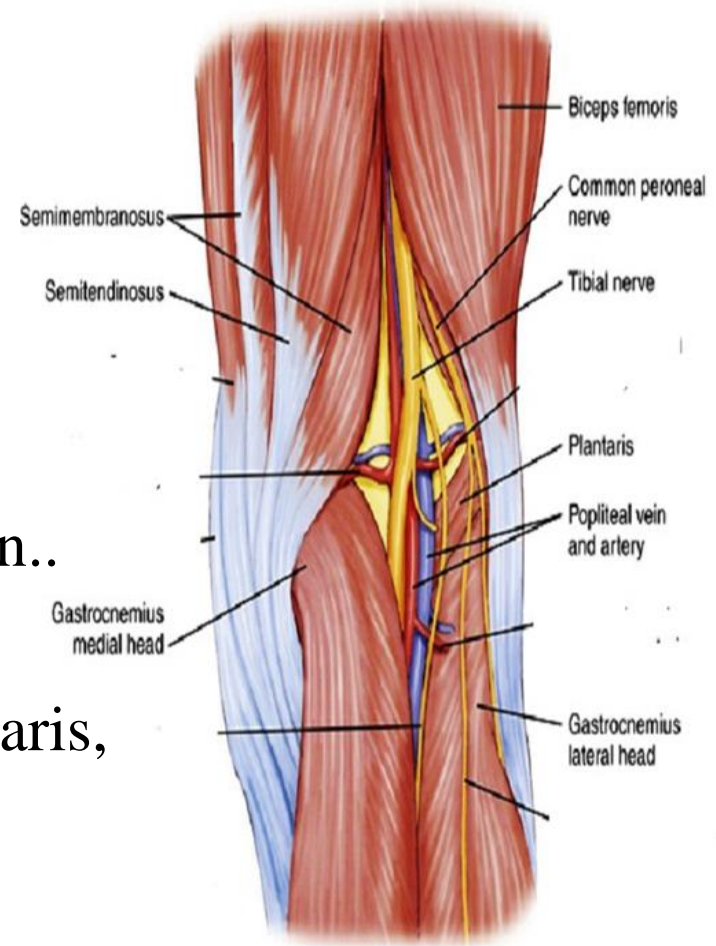
branches :

A-muscular: 2 heads of gastrocnemius, plantaris, popliteus & soleus

B-articular : 3 genicular

supero medial , inferomedial and middle

→ knee joint & middle pierce oblique popliteal lig → cruciate lig



TIBIAL NERVE IN POPLITEAL FOSSA

branches :

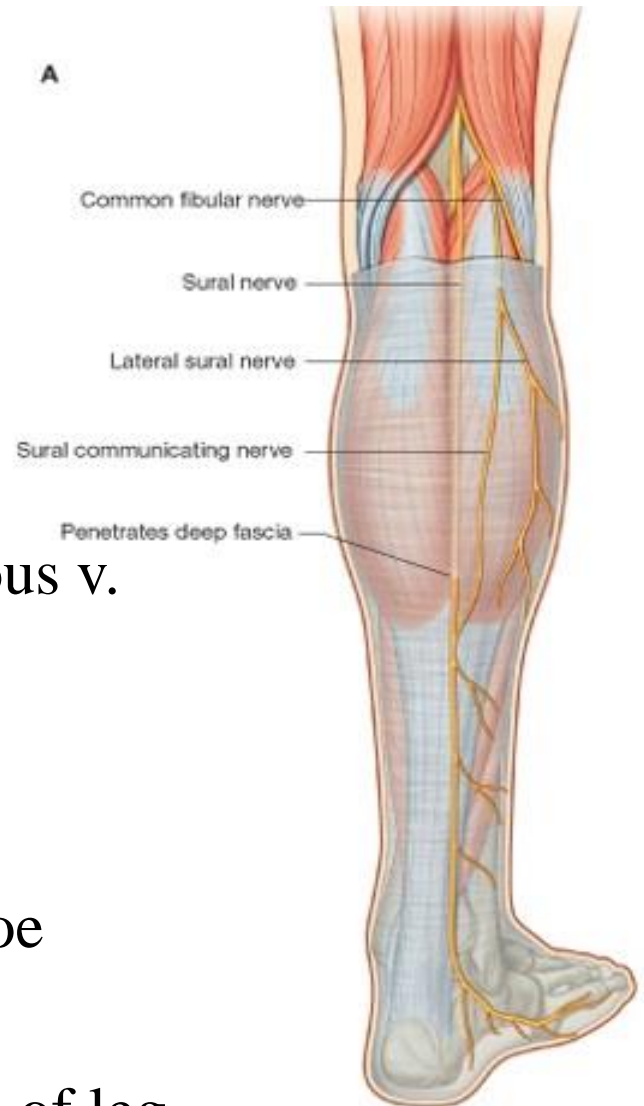
C-cutaneous : sural n.

C & r:

- descend () 2 heads of gastrocnemius then superficial to its belly
- In middle of leg it pierce deep fascia to be in superficial fascia with small saphenous v.
- joined by sural communicating of common peroneal N.
- Curve behind and below lateral malleolus
- Pass forward on lateral side of foot & little toe

Distribution: supply skin of calf,

Lower part of back & lateral side of leg
lateral side of foot & little toe

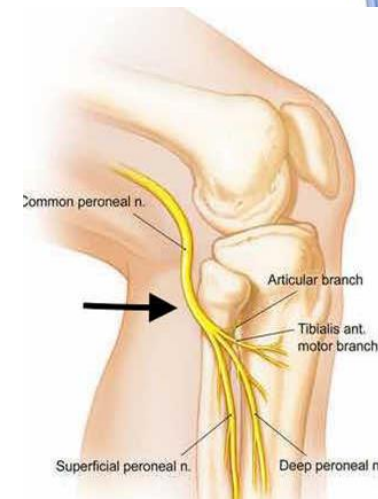
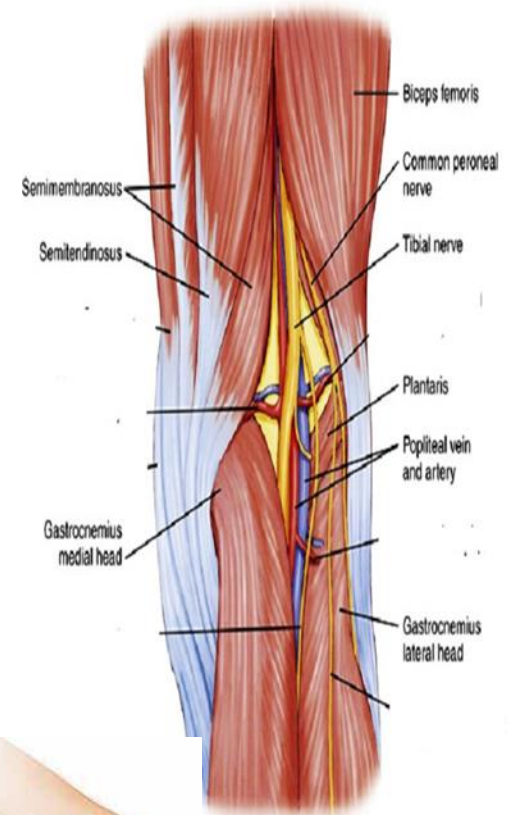


COMMON PERONEAL NERVE

O: smaller terminal division of sciatic N.

C & r:

- enter popliteal fossa at upper angle
- descend downward & laterally
medial to biceps femoris
- Leave fossa at lateral angle
crossing plantaris & lateral head of gastrocnemius
- Curve around neck of fibula (could be rolled)
& end on its lateral side deep to peroneus longus
giving 2 terminal brs
deep peroneal n.
superficial peroneal n.



COMMON PERONEAL NERVE

branches :

A-articular : 3 genicular

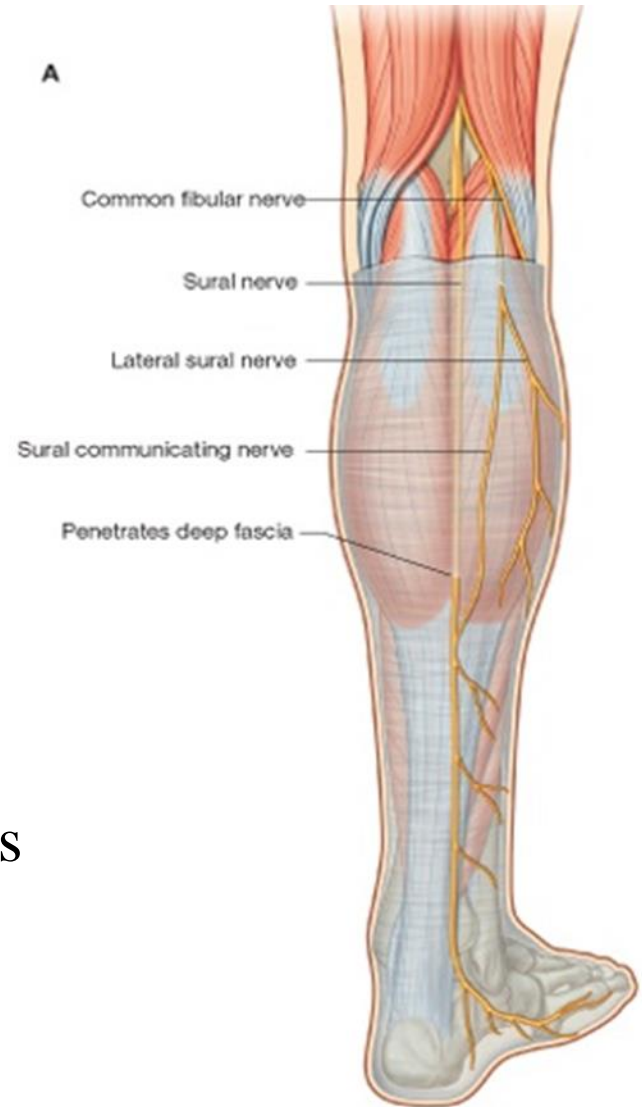
supero lateral , inferolateral and
recurrent genicular

B-cutaneous :

1-sural communicating N.
that joining sural N.

2-lateral cutaneous n. of calf :
supply upper part of lateral side of leg.

C- muscular : to short head of biceps femoris
(arise high up in popliteal fossa)



THANK