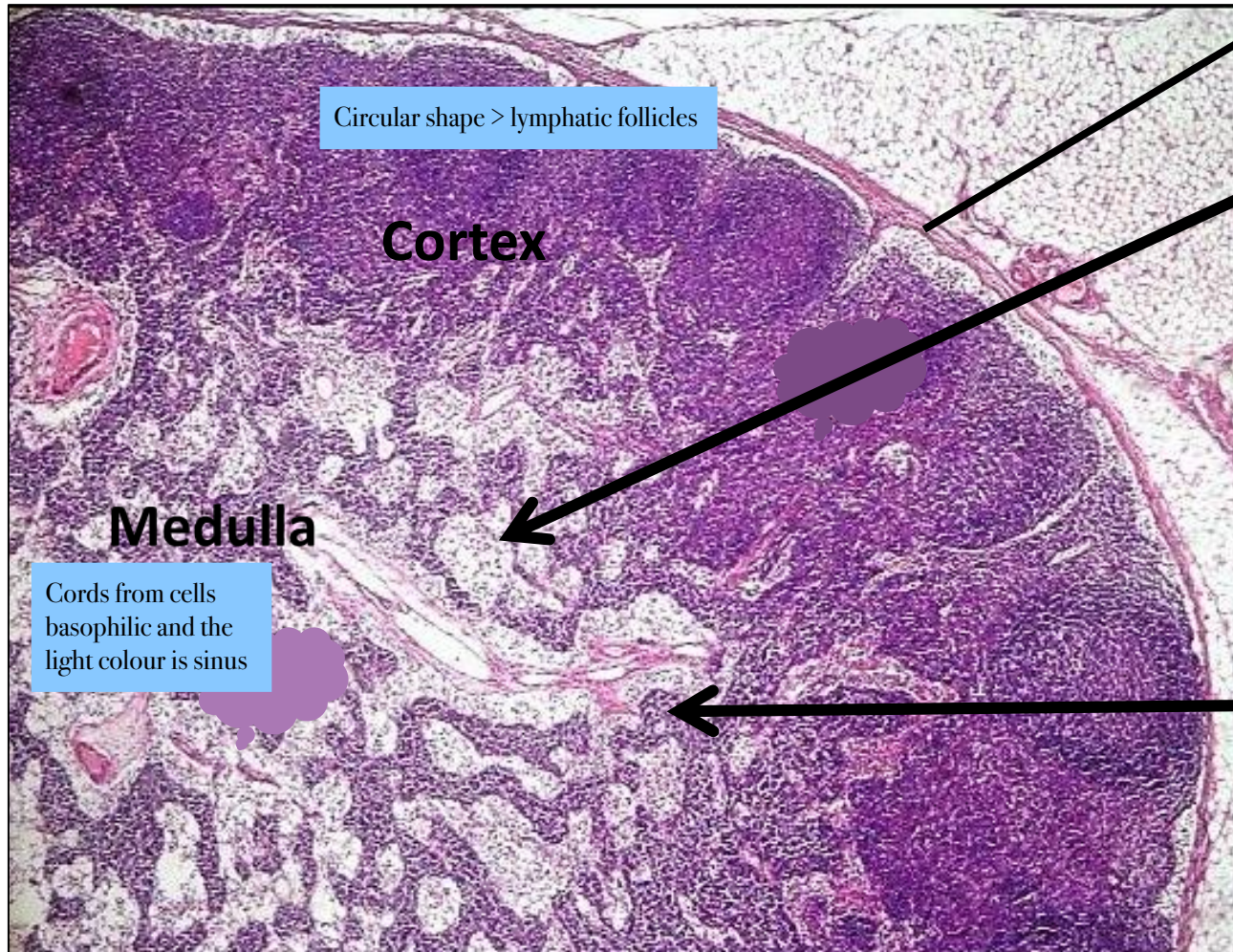


The questions will be:
Identify the slide
Or arrowed part

Section in Lymph node showing medullary cords & sinuses

Kidney, bean shaped

capsule Acidophili CT



Circular shape > lymphatic follicles

Cortex

Medulla

Cords from cells
basophilic and the
light colour is sinus

Medullary sinuses

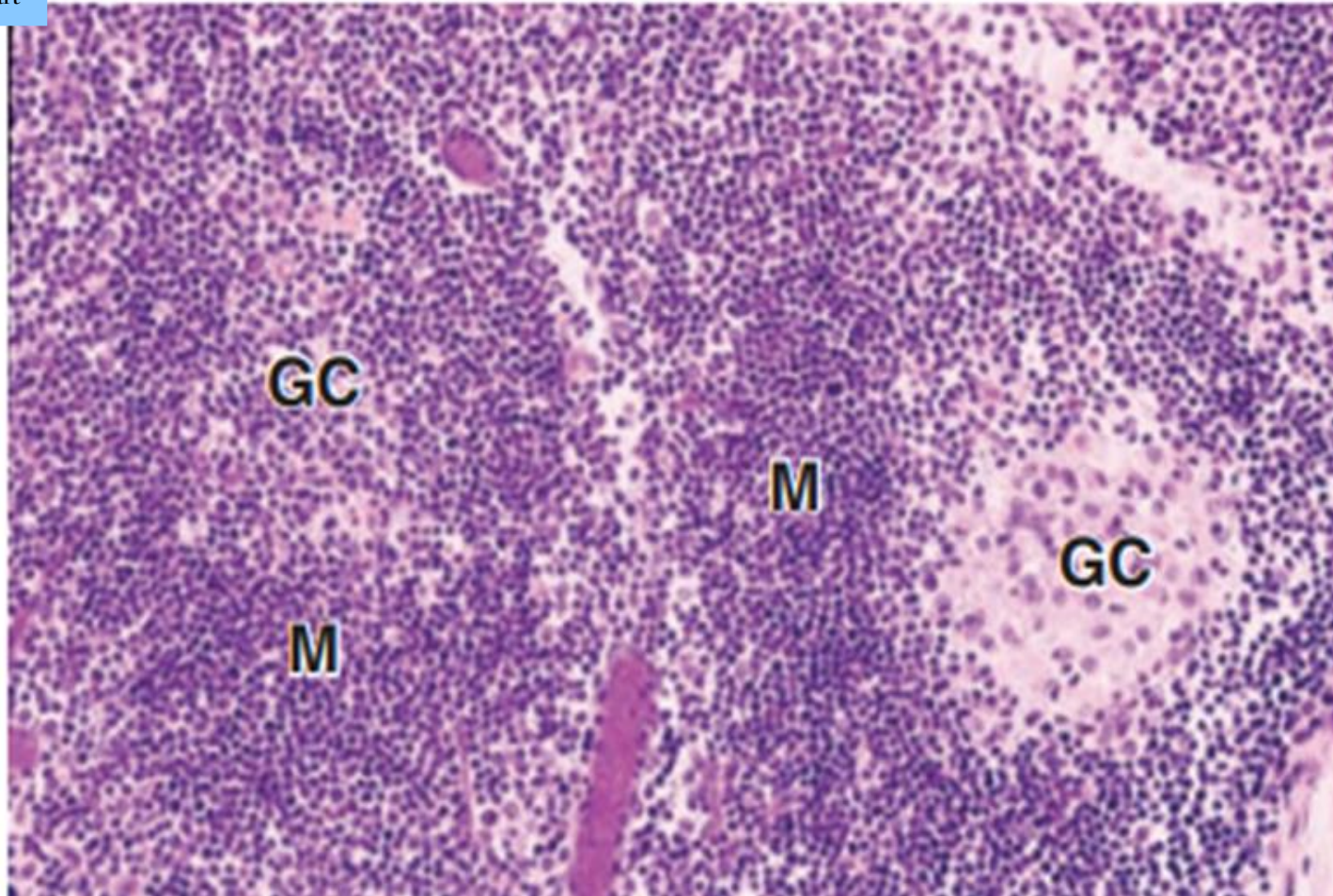
Medullary cord

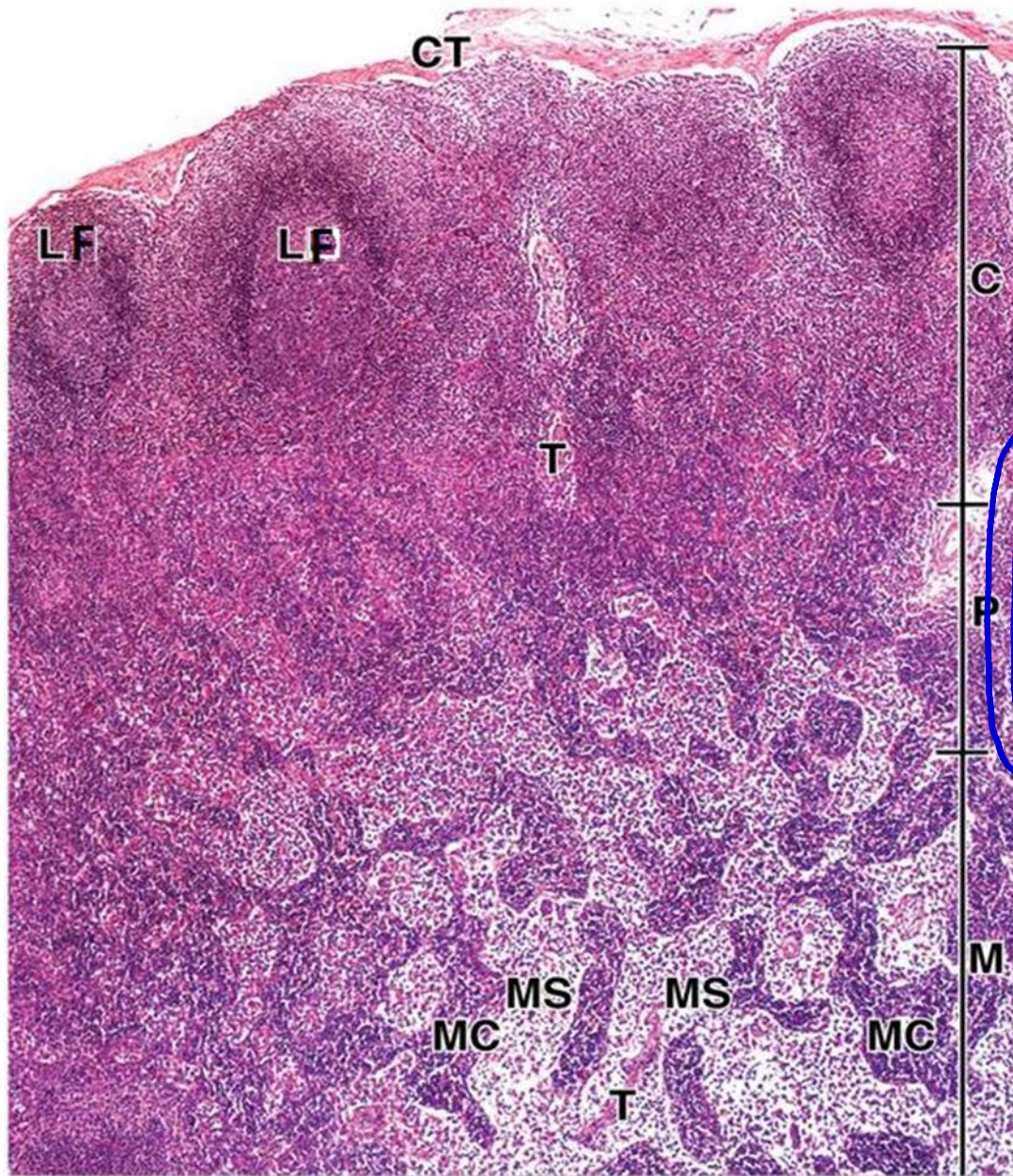
Lymphatic nodule

M=Mantle zone

GC= germinal centre

Dark part





Lymph node

CT --- Connective tissue

C --- Cortex

M --- Medulla

P --- Paracortex

LF --- Lymph Follicle

T --- Trabeculae

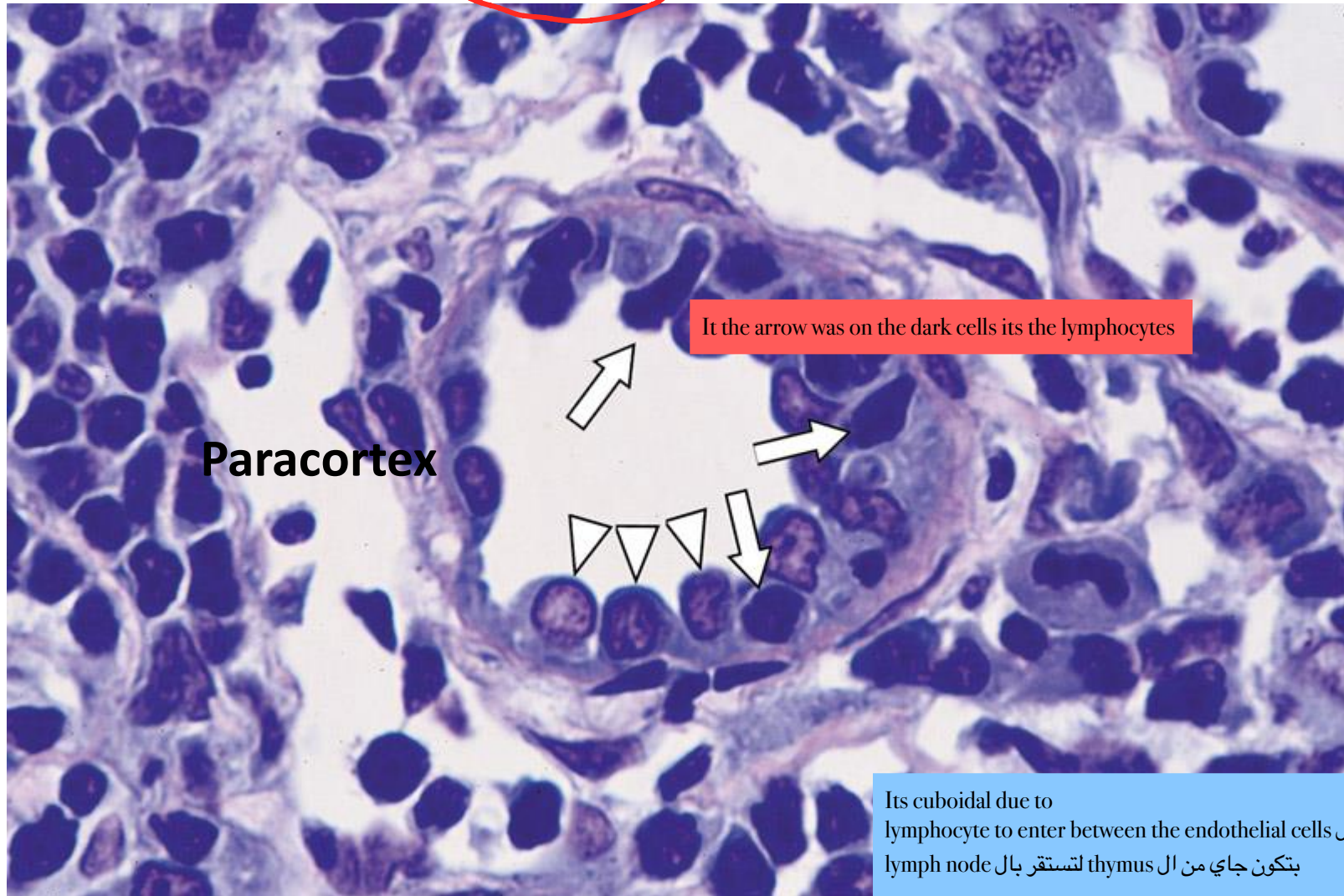
MS --- Medullary Sinus

MC --- Medullary Cords

دائرة
الشكل



The lining epithelium is **cuboidal** rather than the usual flat squamous



High endothelial venule in a lymph node.
High endothelial cells (arrowheads).
The venule is crossed by lymphocytes (arrows).

Palatine tonsil

من فوق يتكون نفس ال
epithelium of the
mouth cavity

On the wall of oropharynx

ببتميز انه

Not complete band? It has crypts

**Non- K stratified
squamous
epithelium**

Lumen of oral
cavity

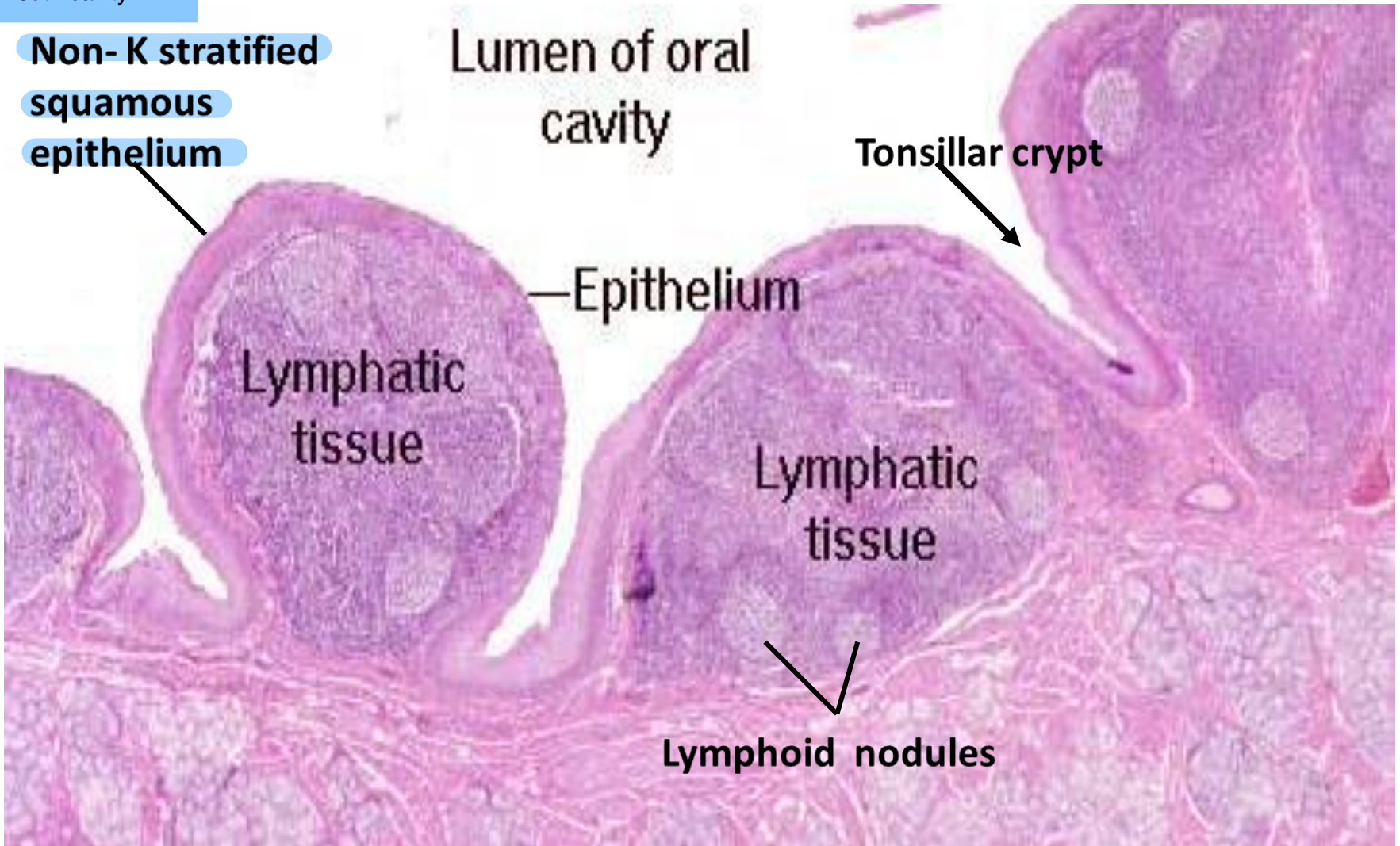
Tonsillar crypt

—Epithelium

Lymphatic
tissue

Lymphatic
tissue

Lymphoid nodules



Thymus gland

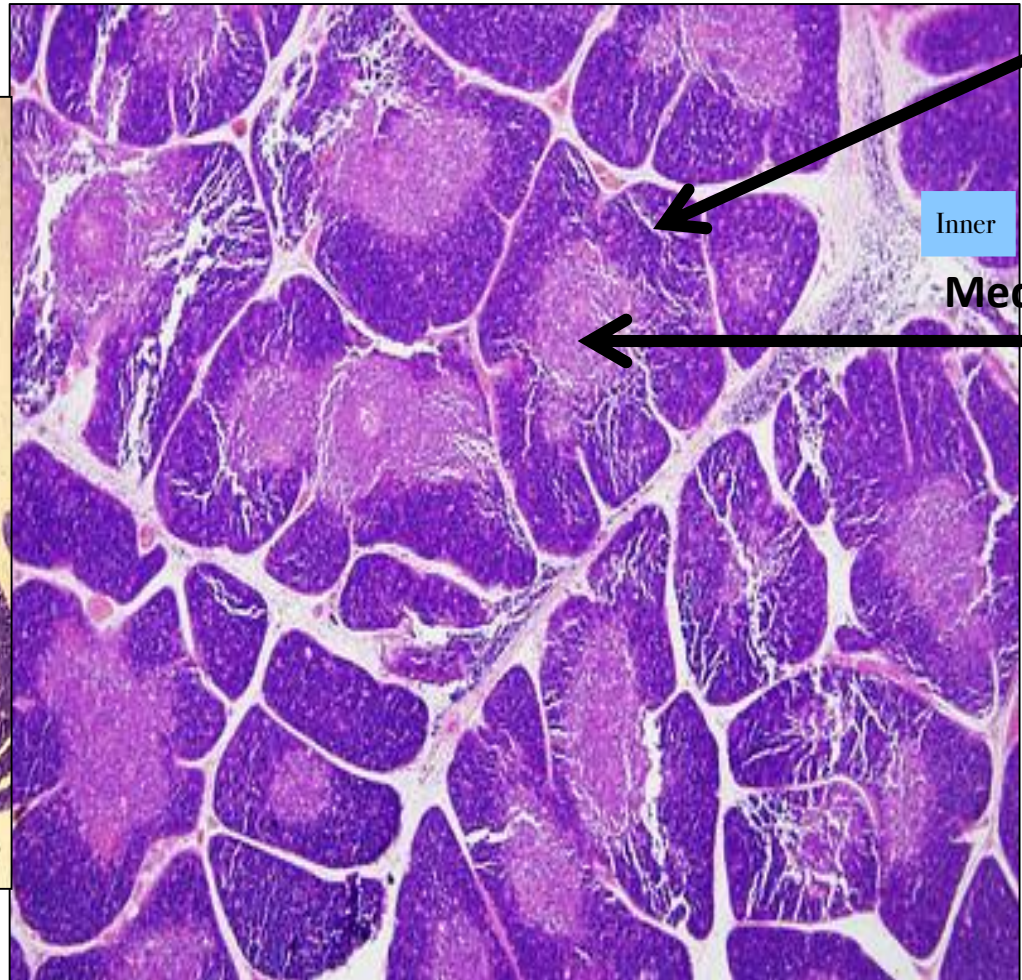
Group of lobules

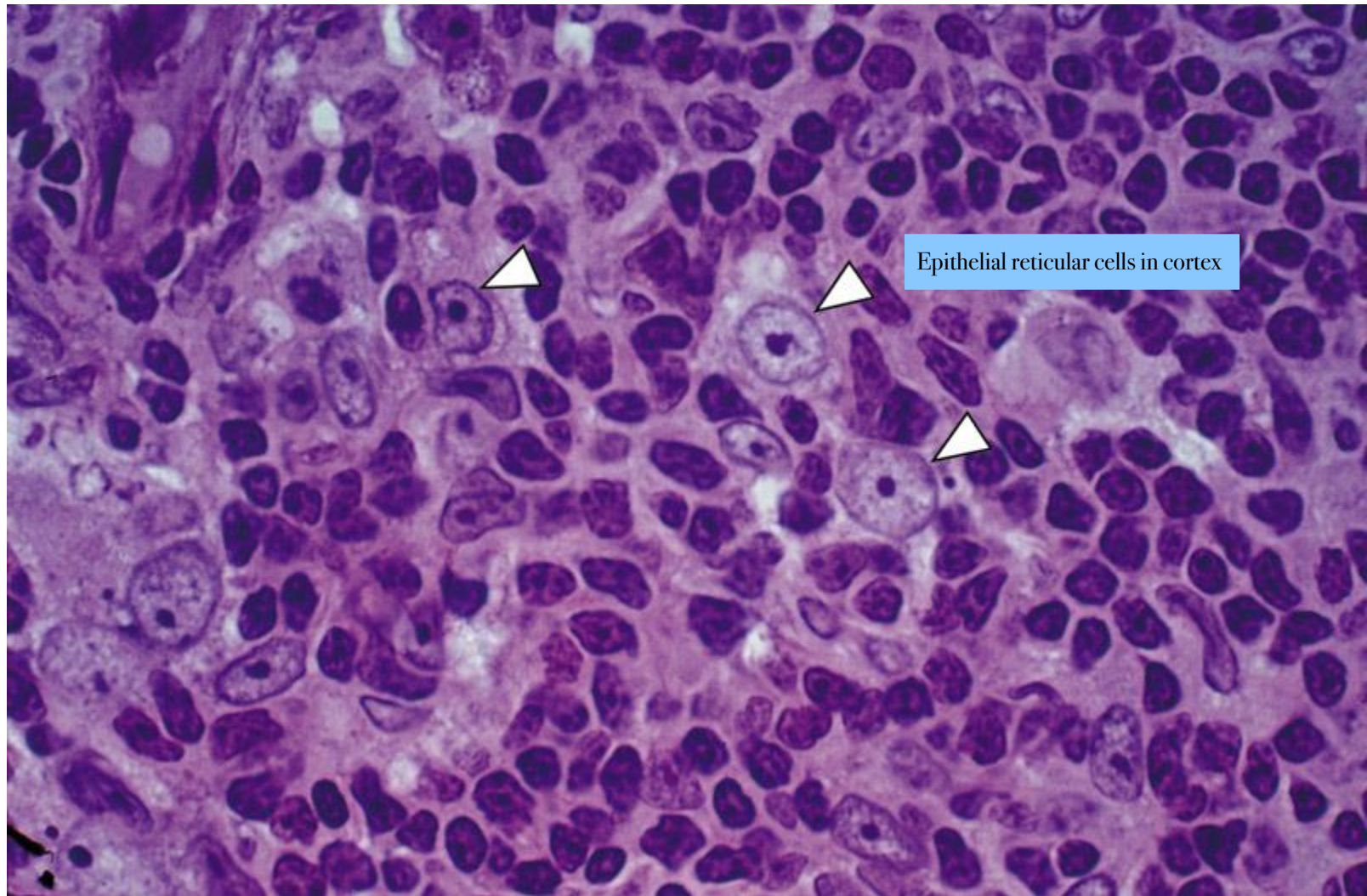
Outer

Cortex

Inner

Medulla





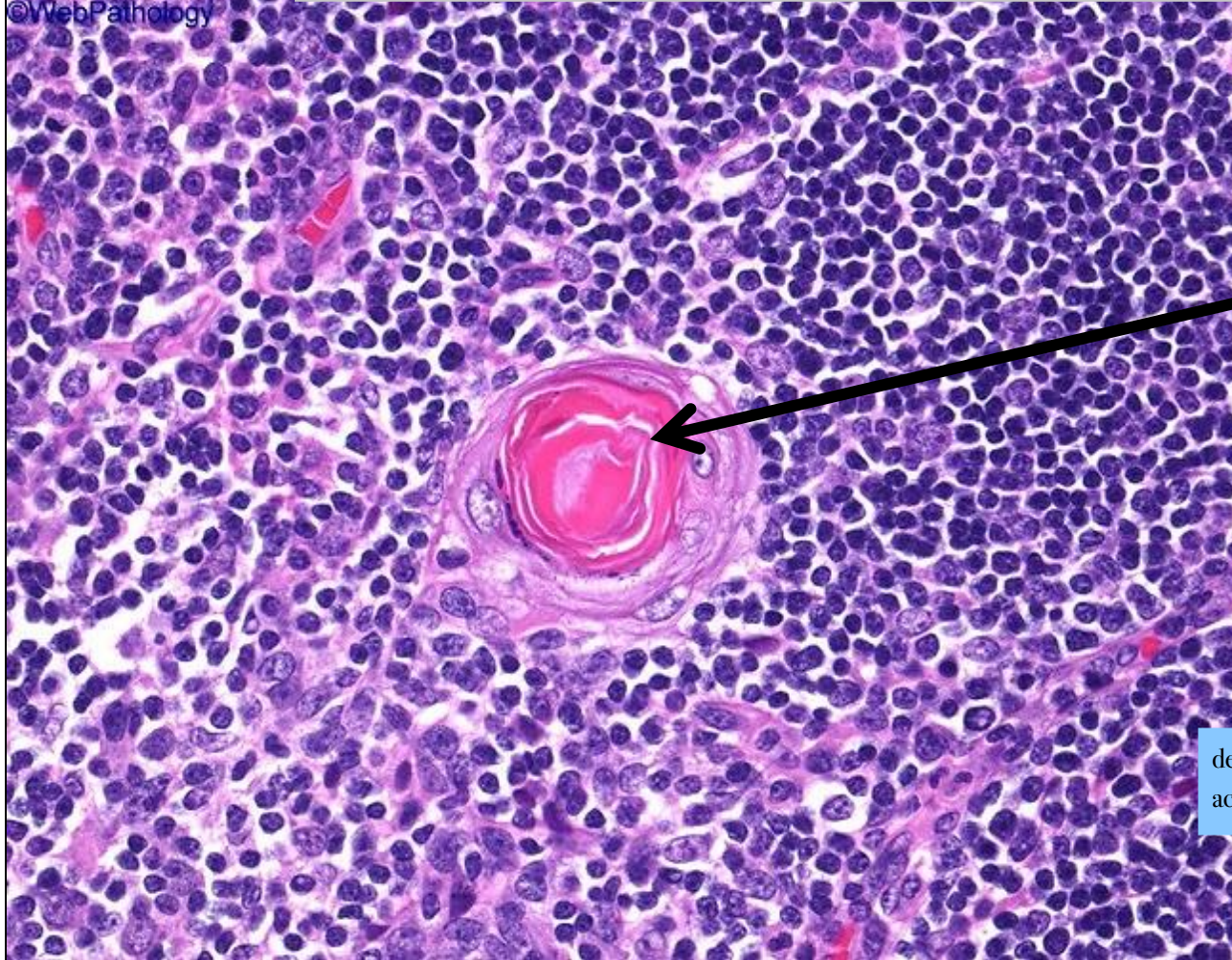
Cortex: Epithelial reticular cells (arrowheads) surrounded by dark-stained T lymphocytes.

Small T lymphocytes

Thymus/ Hassall's corpuscle

Medulla lighter than cortex even the lymphocyte became large and T lymphocyte became smaller in number

©WebPathology

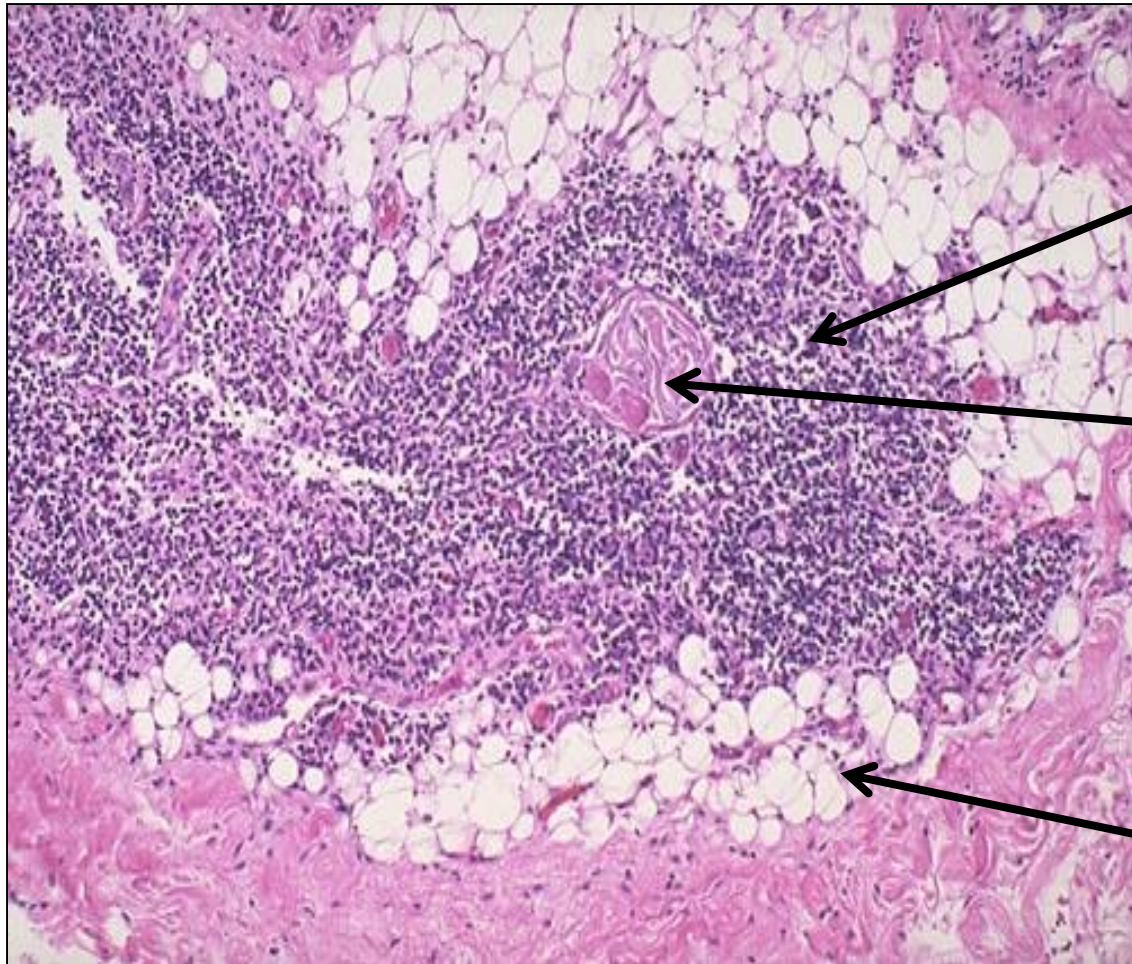


Acidophilic mass of
degenerated reticular
cells ,
surrounded
طبقات دائرية
By concentric layers of
epithelial reticular
cells

هاي الطبقات الدائرية اجت بنص وصارلها degeneration
فصارت ال degenerated عبارة عن acidophilic material

Adult thymus (involuting)

Atrophy



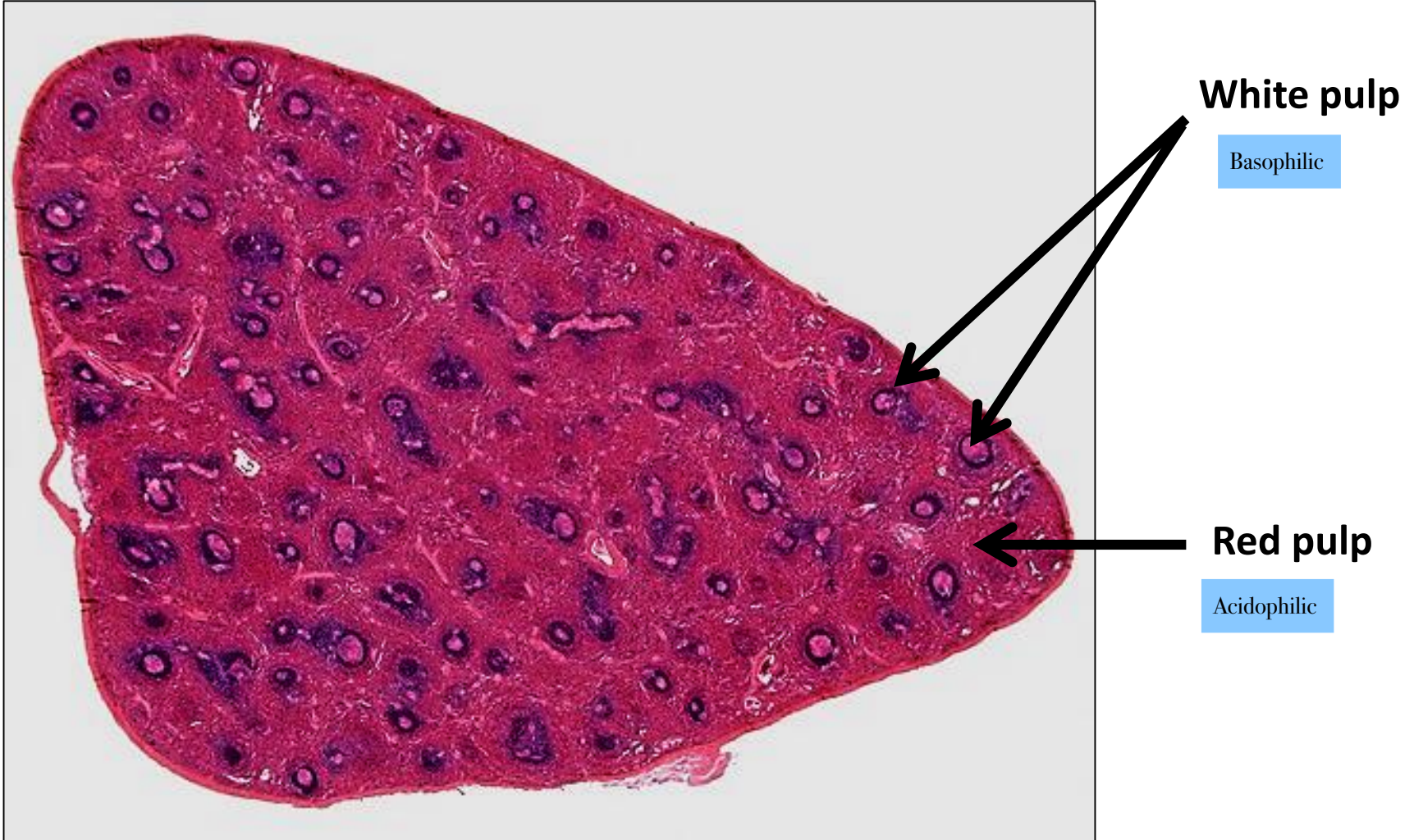
Remnant of thymic
tissue

Hassall's corpuscles

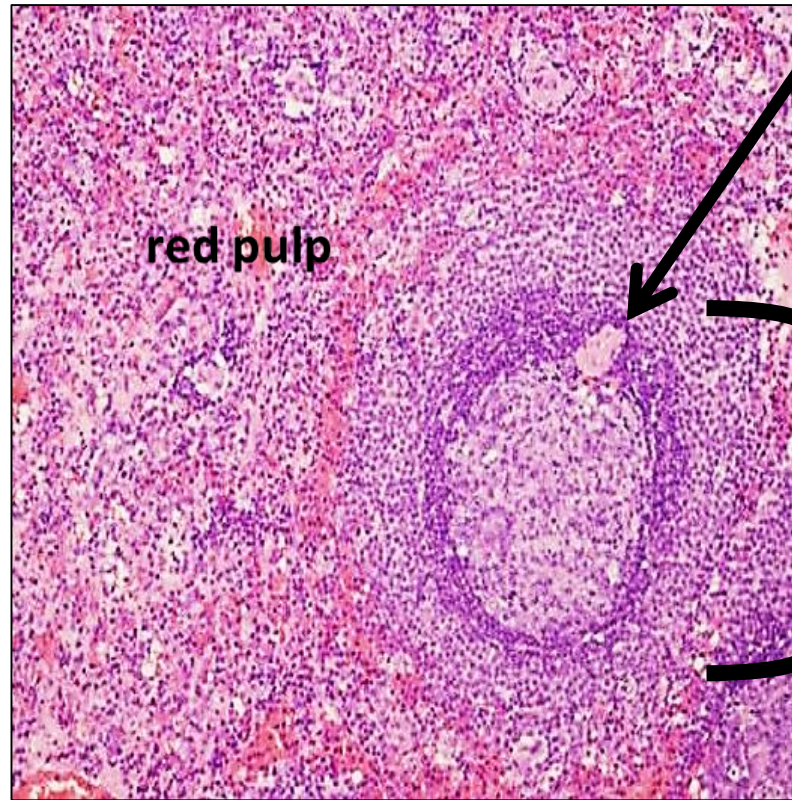
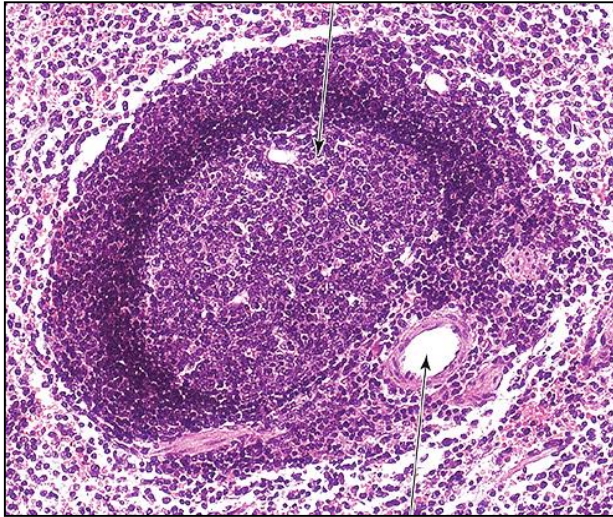
Will increase the fat tissues

Fatty tissue

Spleen showing white & red pulps



Splenic nodule



Central arteriole

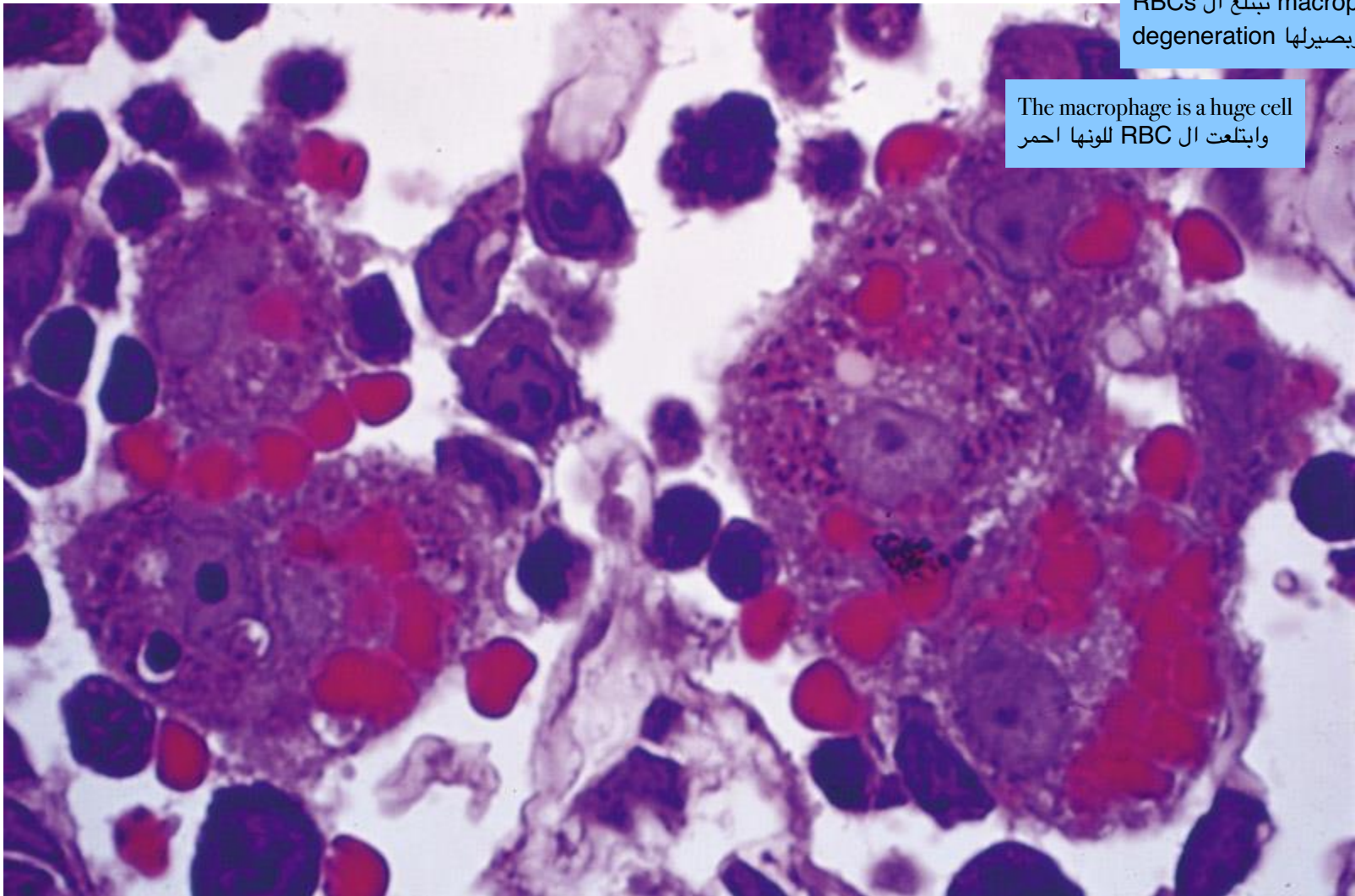
Eccentric location

موقع طرفي

**White pulp
composed of
lymphoid
aggregates
surrounded with
red pulp**

ال macrophage تبتلع ال RBCs
القديمة وبصيرلها degeneration

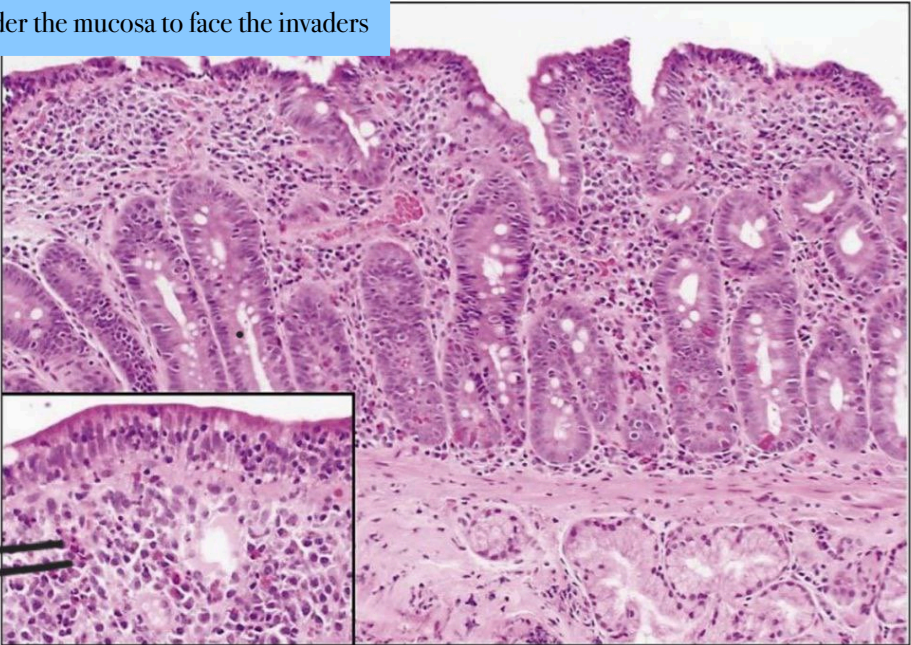
The macrophage is a huge cell
وابتلعت ال RBC للونها احمر



5 spleen macrophages in active phagocytosis of erythrocytes
in different stages of degradation.

Gut associated lymphoid tissue/ GALT/ diffuse lymphoid tissue

Under the mucosa to face the invaders



Basophilic

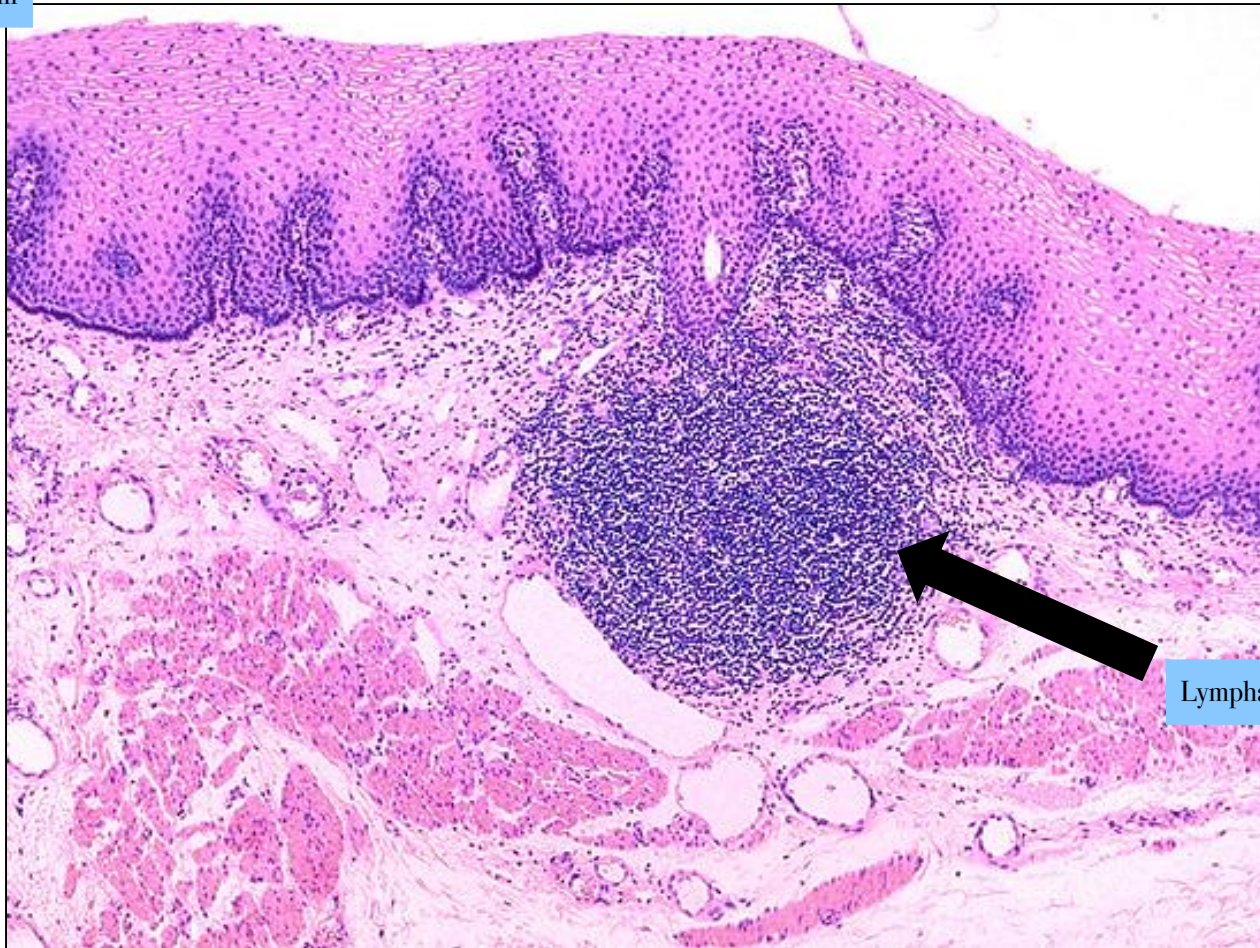
Nuclei
of

lymphatic
tissue

Esophagus / 1ry lymphatic nodule/ no germinal center

Stratified squamous epithelium

No gland no villi



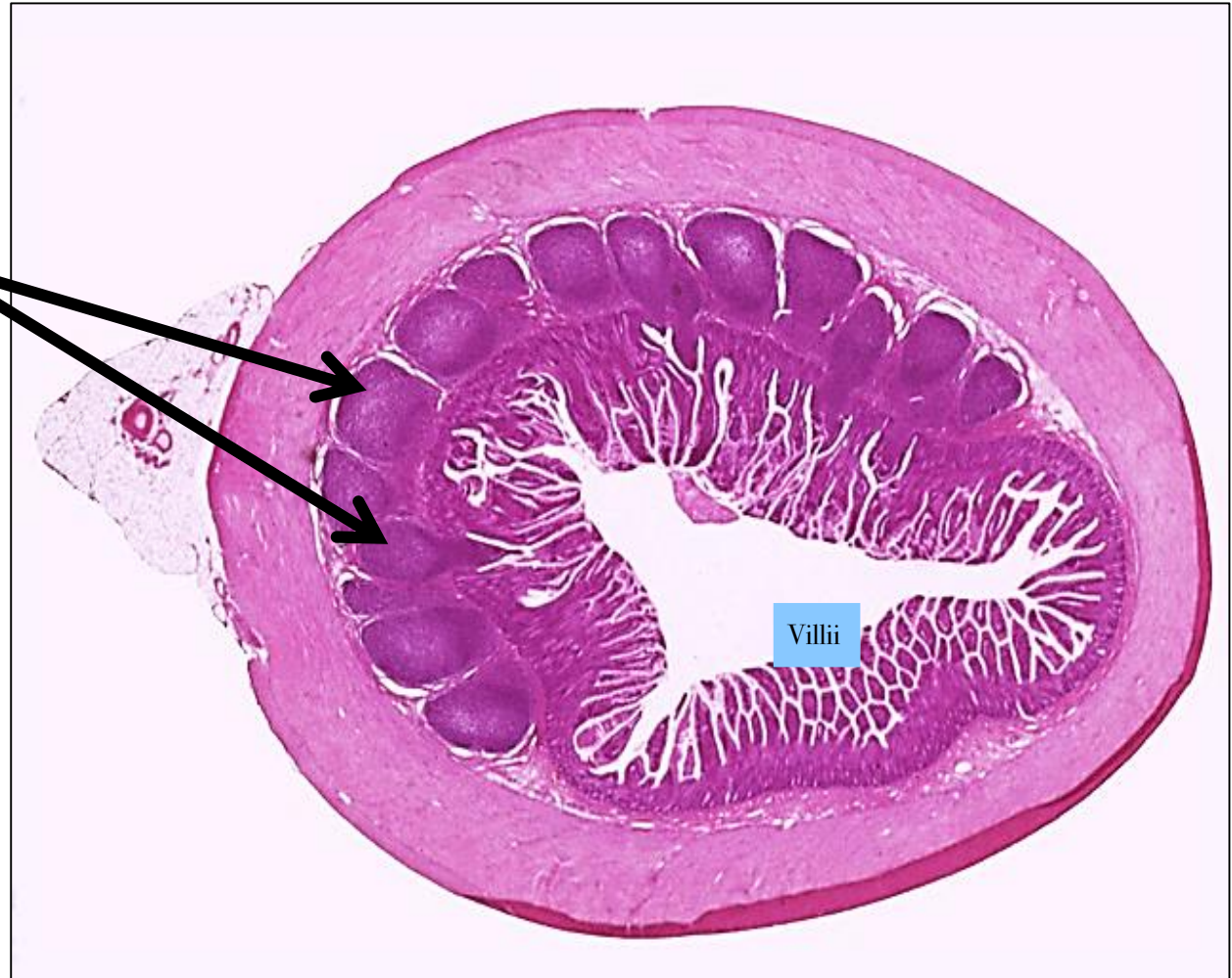
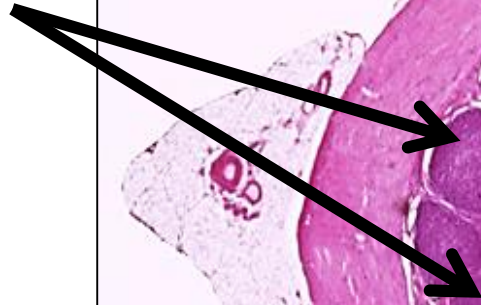
Lymphatic follicle "tissue"

MALT/ mucosa associated lymphoid tissue/ ileum

Only on one side

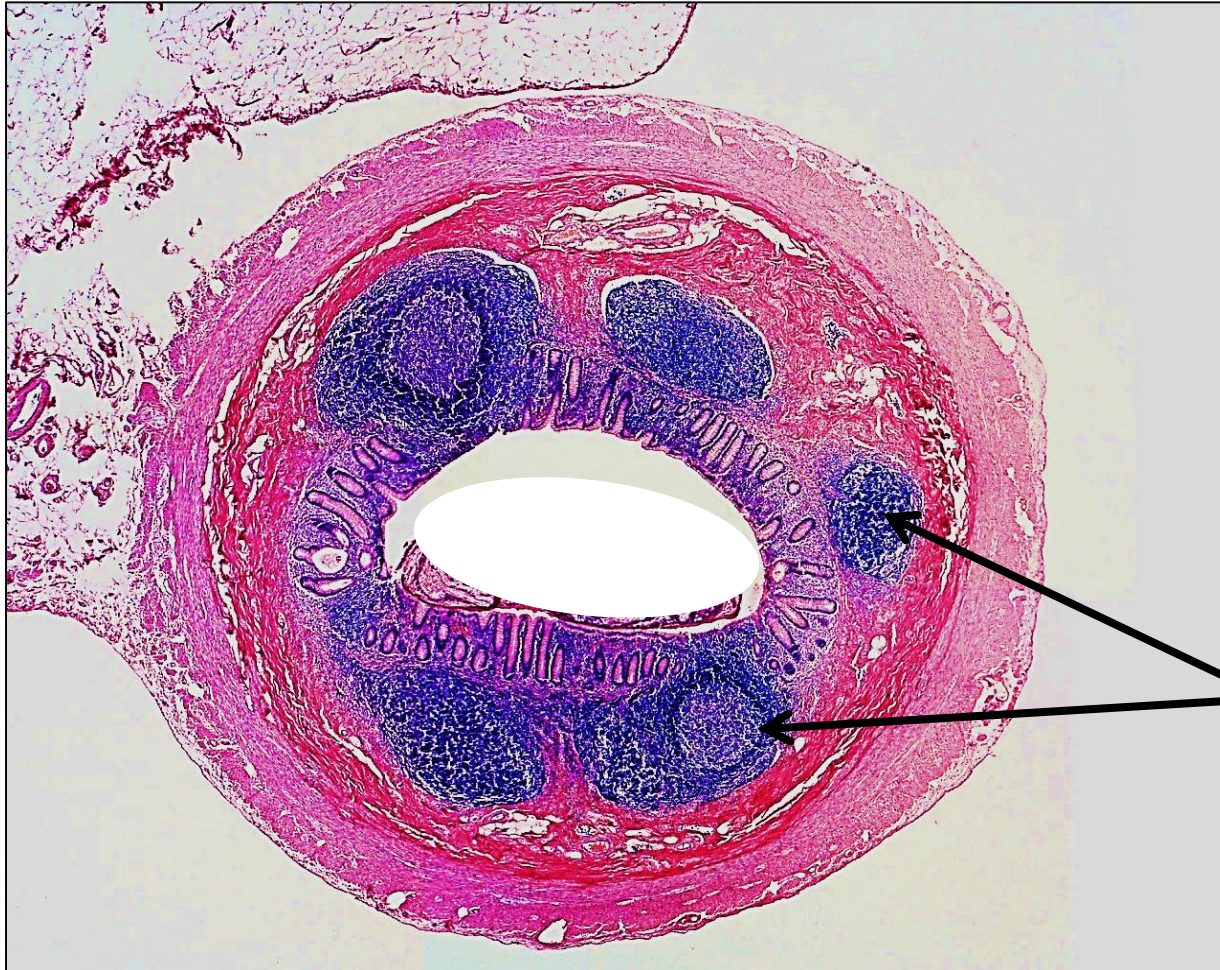


Peyer's patches



Villi

MALT/ Appendix



Lymphoid follicles

دکتر
Peyers
Patch