

3/4/25 online

BLOOD 2

الأرقام بهذه الصورة
By أسوان

Heba Hassan Abd Elgawad

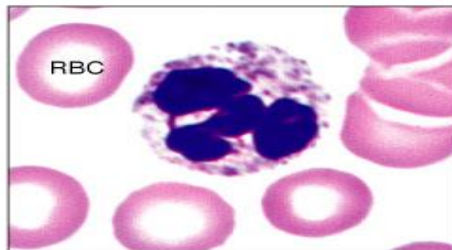
(Size + Life span).

بى تعرف **Ass. Prof of Histology**

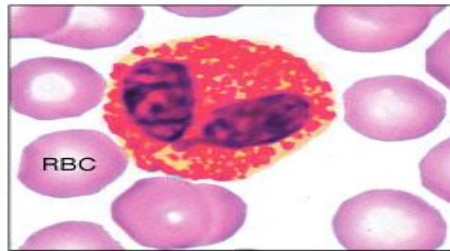
نمل الحجم
(أكبر، أصغر...)

Leukocytes(white blood cells or WBCs)

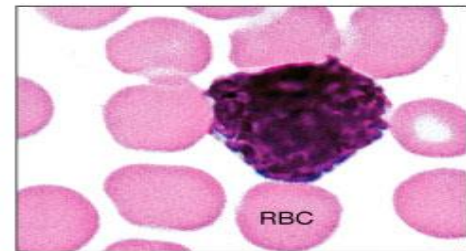
- Leukocytes are true cells with a nucleus and cytoplasm. They leave the blood and migrate to the tissues where they become functional and perform various activities related to immunity.
 - Total leukocytic count:**
4,000 – 11,000 / cubic millimeter of blood.
- True cells*
↓
have nucleus.
- Blood film.*



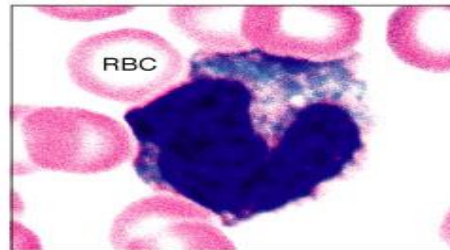
(a) Neutrophil



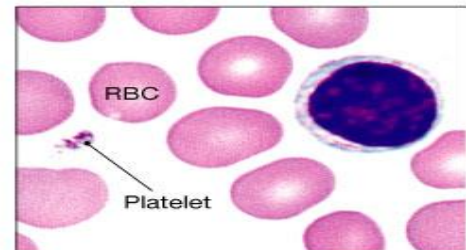
(b) Eosinophil



(c) Basophil



(d) Monocyte



(e) Lymphocyte

Leukocytosis is the increase in number of leukocytes above 11000 / cubic millimeter which is either:

Physiological: as during pregnancy, lactation, after muscular exercise and after cold baths.

Pathological: as in acute pyogenic infections (abscess, acute follicular tonsillitis and acute appendicitis).

Bacterial infection.

↑
بكتيري

بالتلويح
بالبكتيريا

Leucopenia is the decrease in the number of WBCs below 4000/ cubic millimeter, it occurs in:

- ① Influenza and typhoid fever.
- ② Exposure to irradiation & X-ray.

→ By Salmonella
By infected food

According to the type of cytoplasmic granules

Classification

Granular Leukocytes

*depend on
staining of granules*

Neutrophils
60-70%

*↑ Highest
number*

Eosinophils
1-4%

Basophils
0.5%

Differential
leucocytic count: *percentage of
each type of cell
to the total leucocytic count.*

Non Granular Leukocytes

"Agranular"

Lymphocytes
20-25%

Monocytes
3-8%

Blood vessel

Endothelial cell

Neutrophils

Diapedesis

Chemotaxis

Phagocytosis

Bacteria

shutterstock

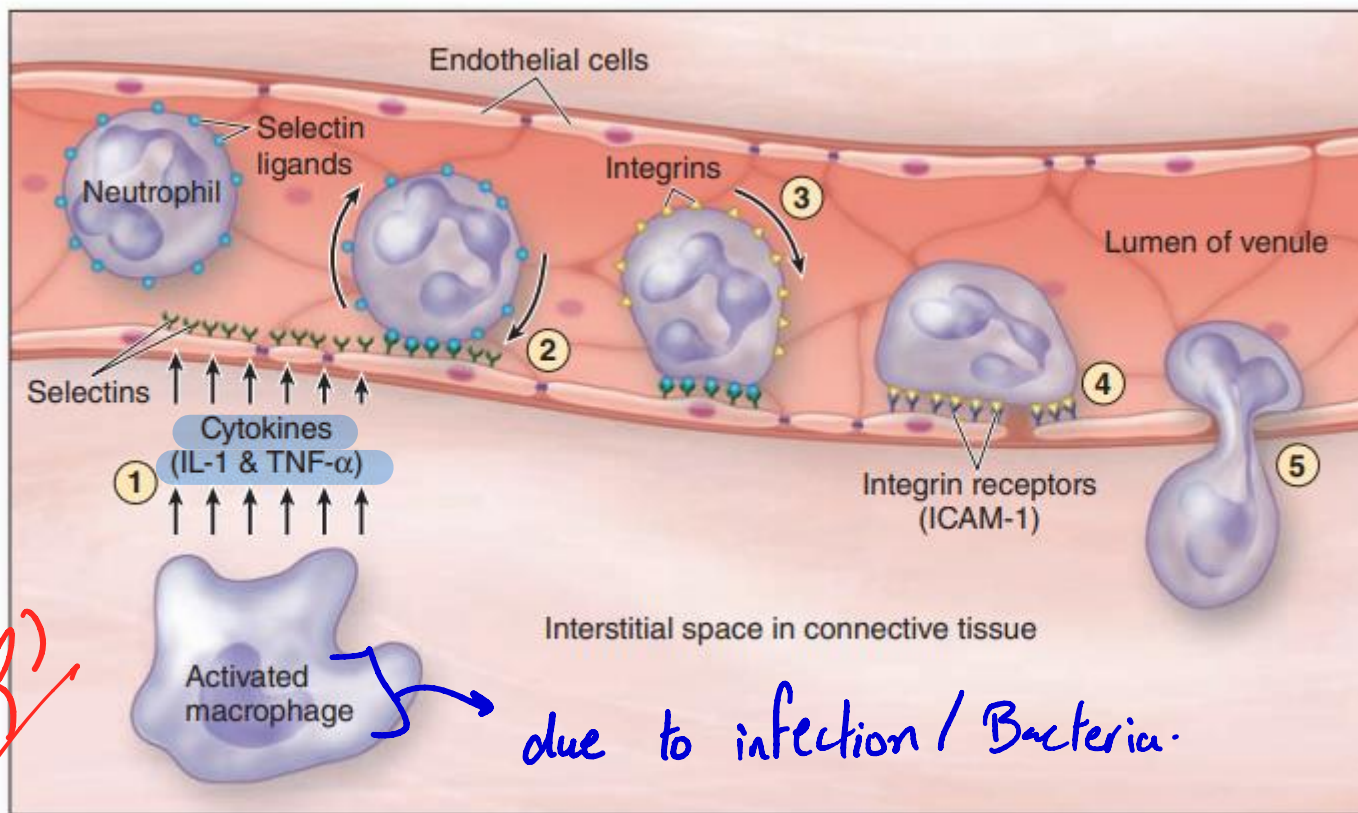
IMAGE ID: 1949104354
www.shutterstock.com

برای الوداء الدموي
عبر الجدران
extension

Diapedesis: the leukocytes send extensions through the openings between the endothelial cells, migrate out of the venules into the surrounding tissue space to the site of injury or invasion.

Chemotaxis (movement in response to chemicals): The attraction of leucocytes by chemical mediators which causes leukocytes to rapidly accumulate where their defensive actions are needed.





due to infection / Bacteria.

neutrophil has ligand for the selectin protein / receptor.

- At such sites, factors termed **cytokines** are released from various sources and these trigger loosening of intercellular junctions in the endothelial cells. Simultaneously, the cell adhesion protein P-selectin appears on these cells' luminal surfaces produced by exocytosis of Weibel-Palade bodies. Neutrophils and other leukocytes have on their surfaces ligands for P-selectin, and their interactions cause cells flowing through the venules to slow down. Other cytokines stimulate slowly rolling leukocytes to express integrins that produce firm attachment to the endothelium → **Diapedesis** → So it can go to site of infection.

I- Granulocytes:

- EM: Their cytoplasm is rich in fine granules. There are two types of granules:

- 1- The specific granules that bind neutral, basophilic or acidophilic components of the dye mixture.

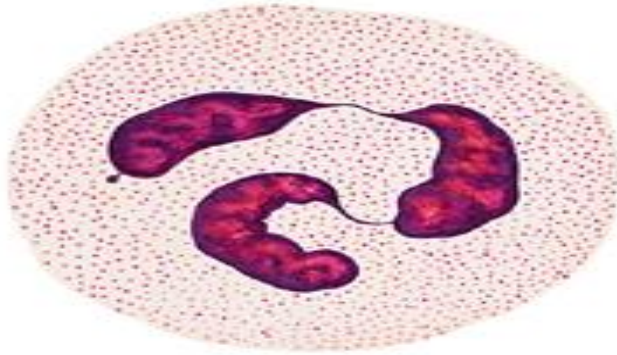
- 2- The non-specific (^{Blue}azurophilic) granules: (lysosomes).

- Granulocytes have nuclei with 2 or more lobes. Life span is few days and dies ^{تفتاز به انوية فير lobes} by ^{macrophage}apoptosis (programmed cell death) in the connective tissues.

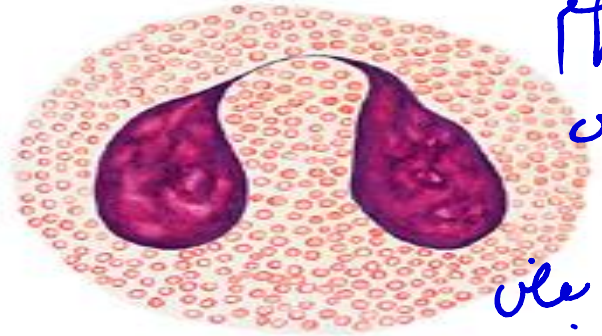
II-Agranulocytes do not have specific granules, but they contain azurophilic granules (lysosomes).

❖ Both types are ^{دائريه}spherical while suspended in blood plasma, but they become amoeboid and motile after leaving the blood vessels and invading the tissues

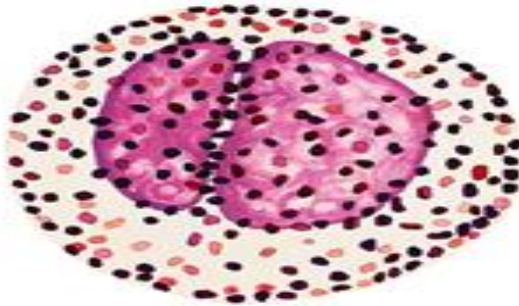
خلاصہ الہم
انویاتے بس
اشکالہم
مختلفہ عن بعض



Neutrophilic granulocyte



Eosinophilic granulocyte



Basophilic granulocyte



Lymphocyte



Monocyte



Monocyte

السواة، إلها أشكال مختلفة Neutrophils (Polymorphs, polymorphnuclear leukocyte)

Round cells → inside blood.

- **Shape:** They are rounded cells
- **Surface:** Pseudopodia → outside blood.
- **Size :** 10-12 microns.
- **Life Span:** 3-5 days

-**Neutrophilia** means increase in the percentage of neutrophils above normal (as in acute pyogenic infections).

-**Neutropenia** means decrease in the percentage of neutrophils below normal (as in viral infections).



Neutrophils

- Structure:

- The nucleus:

- single,
 - segmented into many lobes (usually 3) connected to each other by chromatin threads
 - In females, the inactive X chromosome may appear as a drumstick-like appendage on one of the lobes of the nucleus

كُتْلٌ من الكروماتين chromatin

XX → زوج 22 sex-chromosome

واحد منهم يحمل صفات
والآخر غير نشيط ← Barr Bodies.
من نواة neutrophil جنب lobes النواة.



Cytoplasm: contains two types of granules:

- a. Specific granules which are small & numerous stained faint pink
neutral.
and cannot be seen with LM.
- EM: These granules are membranous vesicles containing alkaline phosphatase and bactericidal enzymes.
 - various *extra cellular Matrix.* ECM-degrading enzymes such as collagenases.
 - *~chemotaxis* chemokines that attract other leukocytes and cytokines that direct activities of other cells
 - Important lipid mediators of inflammation are also released from neutrophils.

Cytoplasm:

b. **Non-specific (Azurophilic)** granules are large, less numerous, stained purple and can be seen with LM.
↳ deep-red-blue

- EM: These granules are primary lysosomes containing hydrolytic enzymes.
- **Myeloperoxidase (MPO)**, which generates hypochlorite and other agents toxic to bacteria
- **Lysozyme**, which degrades components of bacterial cell walls
- **Defensins**, small cysteine-rich proteins that bind and disrupt the cell membranes of many types of bacteria and other microorganisms.

- E.M: The cytoplasm also contains glycogen, small Golgi body, few mitochondria and little endoplasmic reticulum.

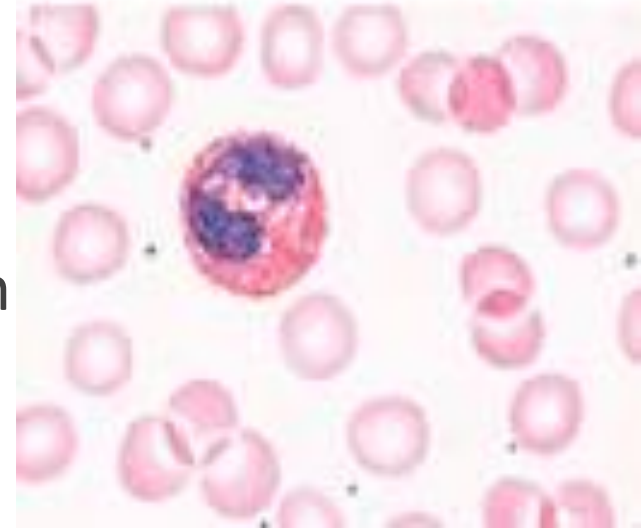
- **Function:** *لا ينس ما يتسعد عليهم* - neutrophils

- 1- Phagocytosis & digestion of micro-organisms especially bacteria by the specific and non specific (azurophilic) granules.
- 2- Release of macrophage chemotactic factor that stimulate attraction of macrophages at the site of inflammation.
- 3- Release of fibroblast chemotactic factor to stimulate fibroblasts to form new collagen leading to healing.
- 4- Dead neutrophils, bacteria, semidigested material and tissue fluid form a viscous usually yellow collection of fluid called pus

ينتج عن الحرب بين الخلايا
PUS

Eosinophils

- **Shape:** They are rounded cells
- **Size :** with diameter ranging from 10-12 m
- **Life Span:** 8-12 days
- **Structure:**



The nucleus: Single, bilobed connected by thin chromatin thread (horse-shoe shaped). + eosinophilic granules. [1]

Abnormal count:

Eosinophilia: in allergic and parasitic diseases. [2]

Eosinopenia: after cortisone treatment.

Cytoplasm: - Cytoplasm contains:

الخلايا بكل عام ينقسم في
النواة. ← specific granules ← Function.

a- Specific granules: Large elongated specific granules with central crystalline dense core formed of protein called **major basic protein (MBP)**. This core is surrounded by less dense material consists of some enzymes e.g. arylsulfatase and histaminase. ← Peripheral ↗

b- Nonspecific granules are lysosomes containing hydrolytic enzymes.

c- Glycogen, and poorly developed endoplasmic reticulum, mitochondria and Golgi body are present.



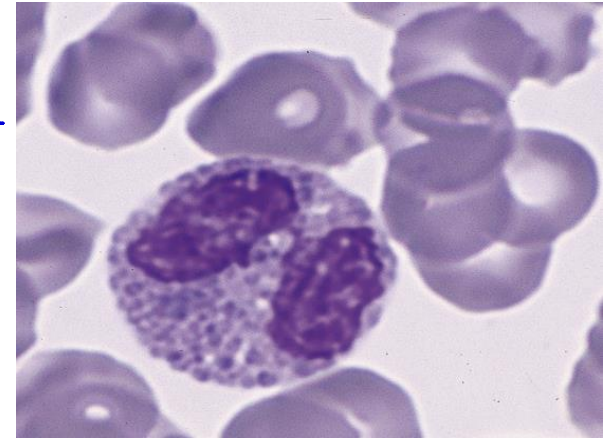
Eosinophils

Function:

- They phagocytose antigen- antibody complexes.
- They are attracted to the sites of allergic reactions by eosinophil chemotactic factor which is released by mast cells to reduce their effects by releasing antihistamine (histaminase).
 - Mast cells release histamine.
 - eosinophils break the accumulated histamine.
- Play a role in killing parasitic worms by major basic protein

Basophils

- **Shape:** They are rounded cells. *Mast cells* *بل عظمى*
- **Size :** with diameter ranging from 10-12 m
- **Life Span:** 12-15 days
- **Structure:**
- **Nucleus:** The nucleus is large and is often bent into a U or S shaped. *Not specific.*
- **Cytoplasm :**
 - a. Specific granules: they are large, basophilic and obscure the nucleus. They are metachromatically stained by toluidine blue and contain heparin & histamine, like mast cells.
 - b. Nonspecific granules: they are lysosomes



بسی آنت علیها
blue

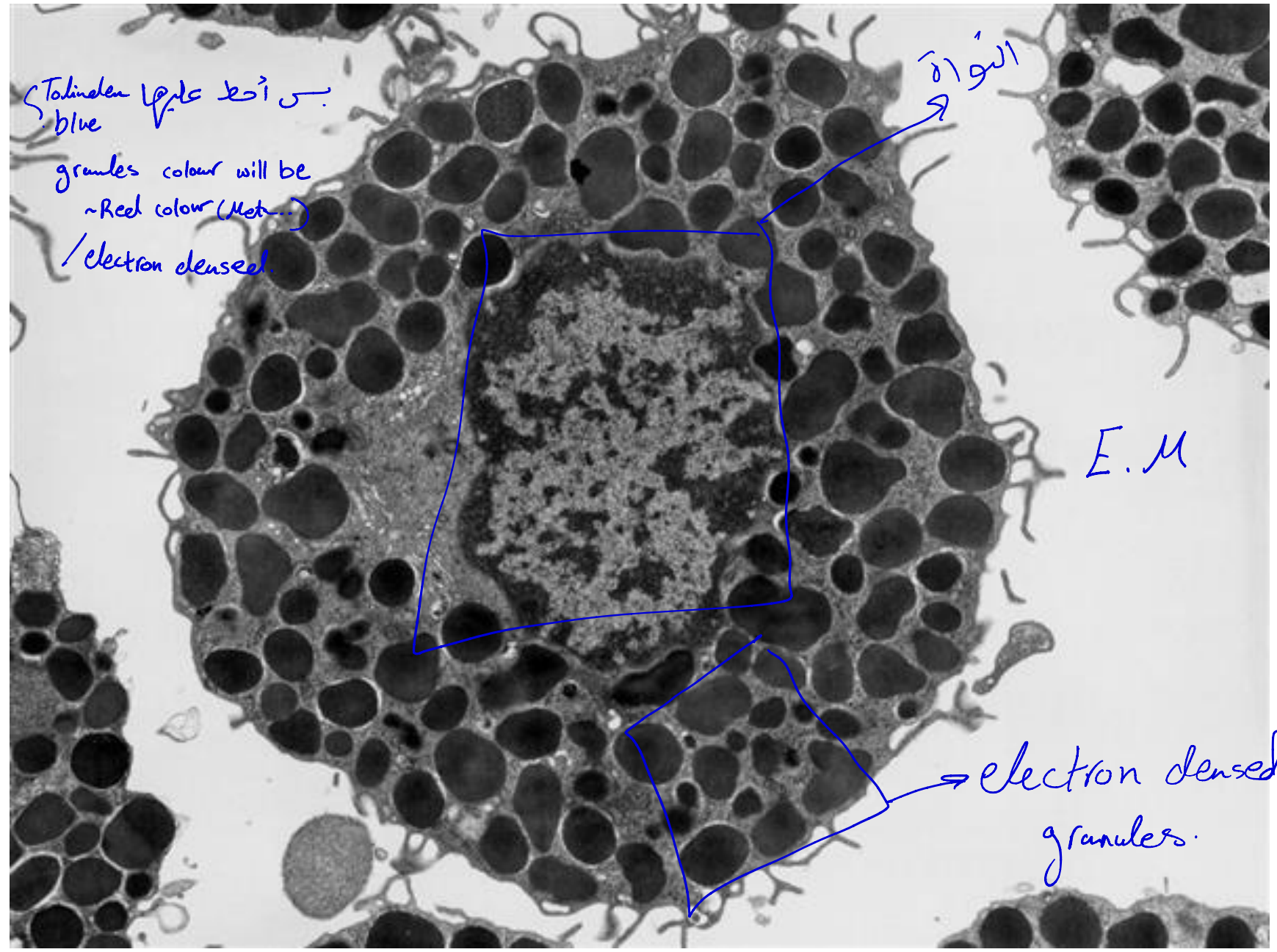
granules colour will be
~Red colour (Meth...)

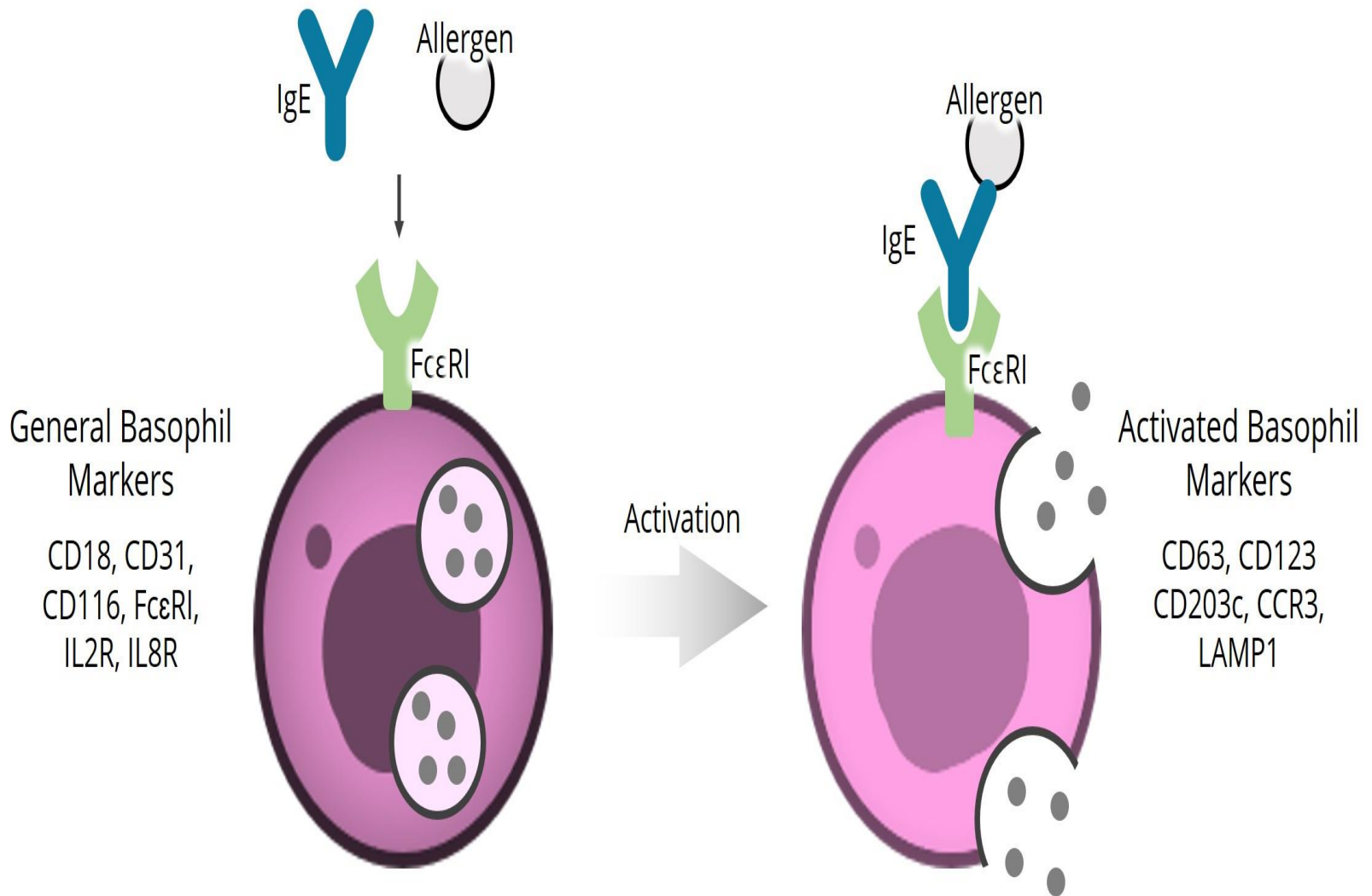
/electron densest.

الغواصة

E.M

electron dense
granules.





c- Varying amounts of glycogen, small Golgi apparatus, a few mitochondria and poorly – developed endoplasmic reticulum.

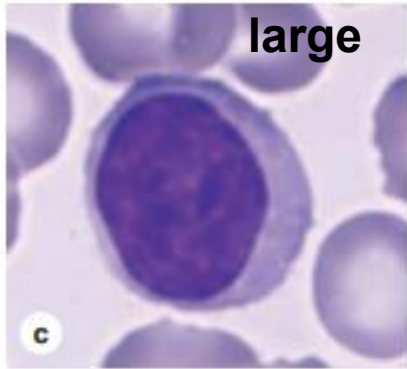
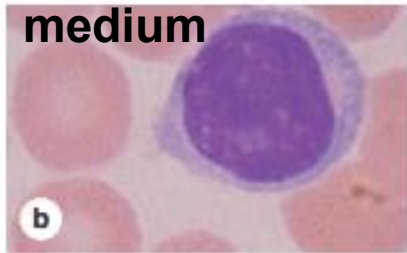
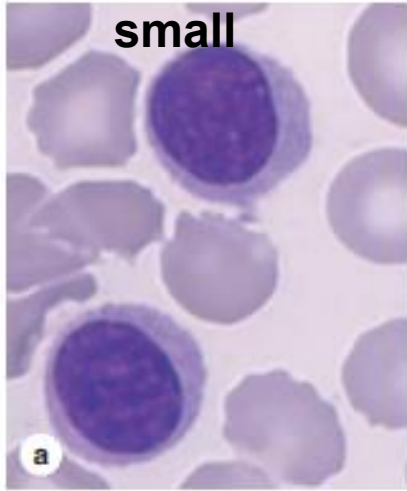
The cell surface has receptors for the plasma IgE, which when come in contact with the antigen (in the blood); they form antigen-antibody complex resulting in degranulation of the basophils and release of its mediators.

■ Functions:

- Secretion of eosinophil chemotactic factor.
- Secretion of heparin (anticoagulant) and histamine (initiates allergic reactions).
بیاضی کی سیولاسیون
- enzyme phospholipase A that catalyzes an initial step in producing lipid-derived proinflammatory factors called leukotrienes.
- by migrating into connective tissues, basophils appear to supplement the functions of mast cells,
- Basophilia means increase of basophils above 1% as in liver cirrhosis.

Lymphocytes

Agranulocyte.



Lymphocytes

- There are different types of lymphocytes; large, medium and small lymphocytes. They are present in the C.T., lymph nodes, spleen, thymus, tonsils and tissue fluids.
- Lymphocytes are the only type of leukocytes that return back from the tissue to the blood.

Large lymphocytes: They are believed to be small lymphocytes activated by the specific antigens.

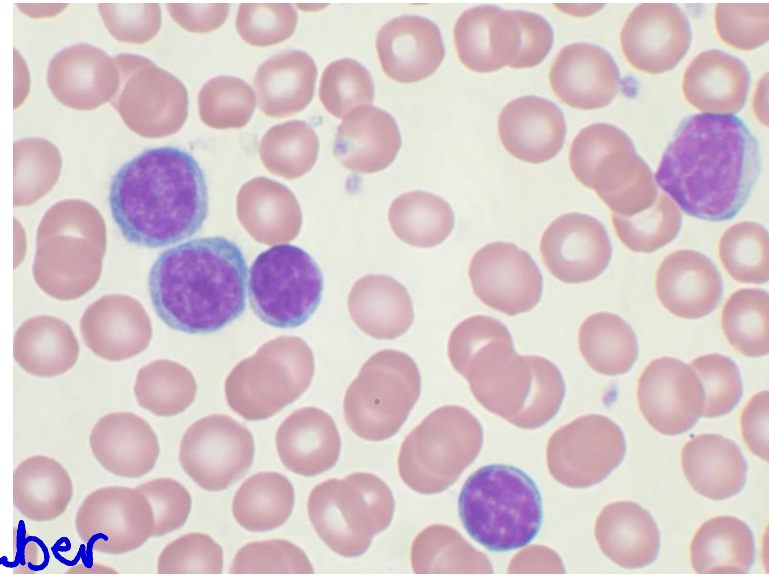
- Diameter: 12-15 μm
- Percentage: 5-10% of circulating WBCs.
- Structure:

-Nucleus: is large & lightly stained (active chromatin) with apparent nucleolus.

-Cytoplasm: is abundant, more basophilic (containing ribosomes) & non-granular. It also contains a few azurophilic granules.

Small lymphocytes: They are the commonest.

- Diameter: 7-9 μm
- Percentage: 15-20 % of circulating WBCs.
- Structure:



- They are spherical in shape.

Small \rightarrow ↑ number

من شرجا انھا small معنات انہ نوات small لازم عظم
lymph

- **Nucleus**: is large, rounded & darkly stained (condensed chromatin) with little indentation at one side. -

↓
inactive

not completely rounded.

منہ سے منہ؟ sides

- **Cytoplasm**: is scanty, and appears as a narrow rim around the nucleus. It is lightly basophilic and non-granular containing a few azurophilic granules, mitochondria, a small Golgi complex and a pair of centrioles and abundant ribosomes.

- There are two types of small lymphocytes:

B-lymphocytes: - They constitute 25 % of circulating small lymphocytes.

- B- ^{Origin}Lymphocytes are produced in bone marrow in man.

↳ Plasma cells → synthesise AB's.

Function: They are responsible for humoral immunity.

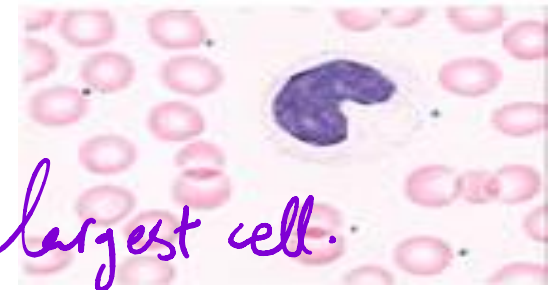
B-lymphocytes when stimulated by specific antigen, some of B-lymphocytes differentiate into plasma cells to produce antibodies. Others generate B-memory cells, which react rapidly to a second exposure to the same antigen

T- lymphocytes:

- They originate in the bone marrow and migrate to the thymus, where they proliferate and carried by the blood to other lymphoid tissue.
- Percentage: 65-75 % of the circulating lymphocytes.
- They are responsible for cellular immunity.

[Cell mediated immunity].

Monocytes



- **Shape:** They are rounded cells
- **Size:** 12-20 microns in diameter. *The most largest cell.*
- **Life Span:** Monocytes circulate in blood about three days after which they leave blood to the connective tissues, where they differentiate into macrophages.

- **Structure:**

The nucleus: oval in shape with deep indentation. Sometimes, it takes the kidney shape. Its chromatin is less condensed than that of lymphocytes

Cytoplasm: The cytoplasm is abundant and pale blue. contains very fine azurophilic granules (lysosomes), well developed Golgi.

- **Function and abnormal count:** In the connective tissue they change to macrophages which are highly phagocytic cells.

They increase in number in malaria, typhoid, and monocytic leukemia.

B

M

L

N

E

N

