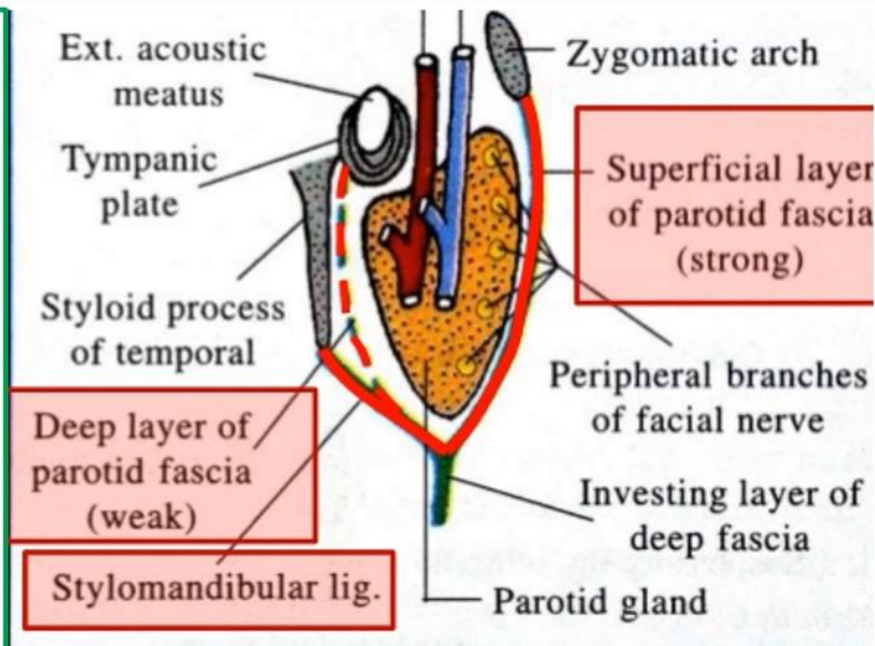


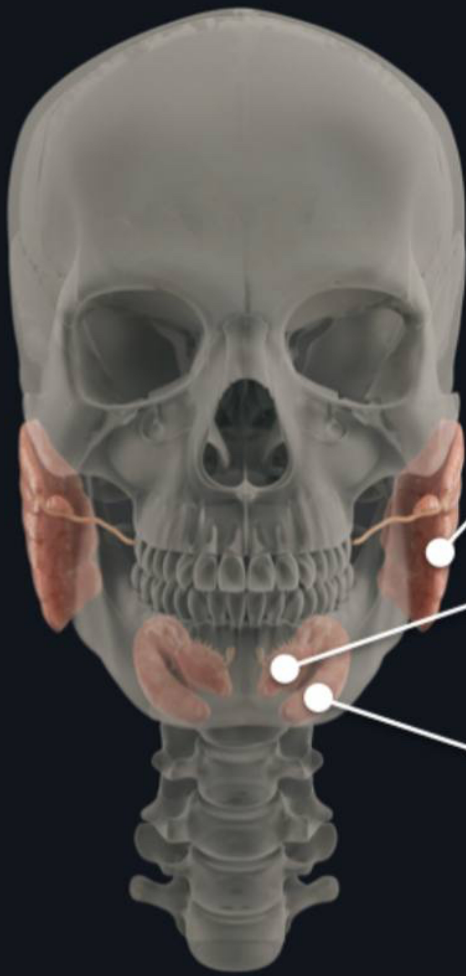
- **Capsule of parotid gland**

1- True (**inner**) capsule is formed of **condensed fibrous tissue**.

2- **False (outer) capsule**; It is derived from **investing layer of deep fascia of neck** which splits at the lower end of the gland into 2 layers;

- **Superficial layer**, covering **outer** surface of gland to zygomatic arch.
- **Deep layer**, covering **inner** surface of the gland. This deep layer forms the **stylomandibular ligament** which separates the parotid gland from the submandibular gland.

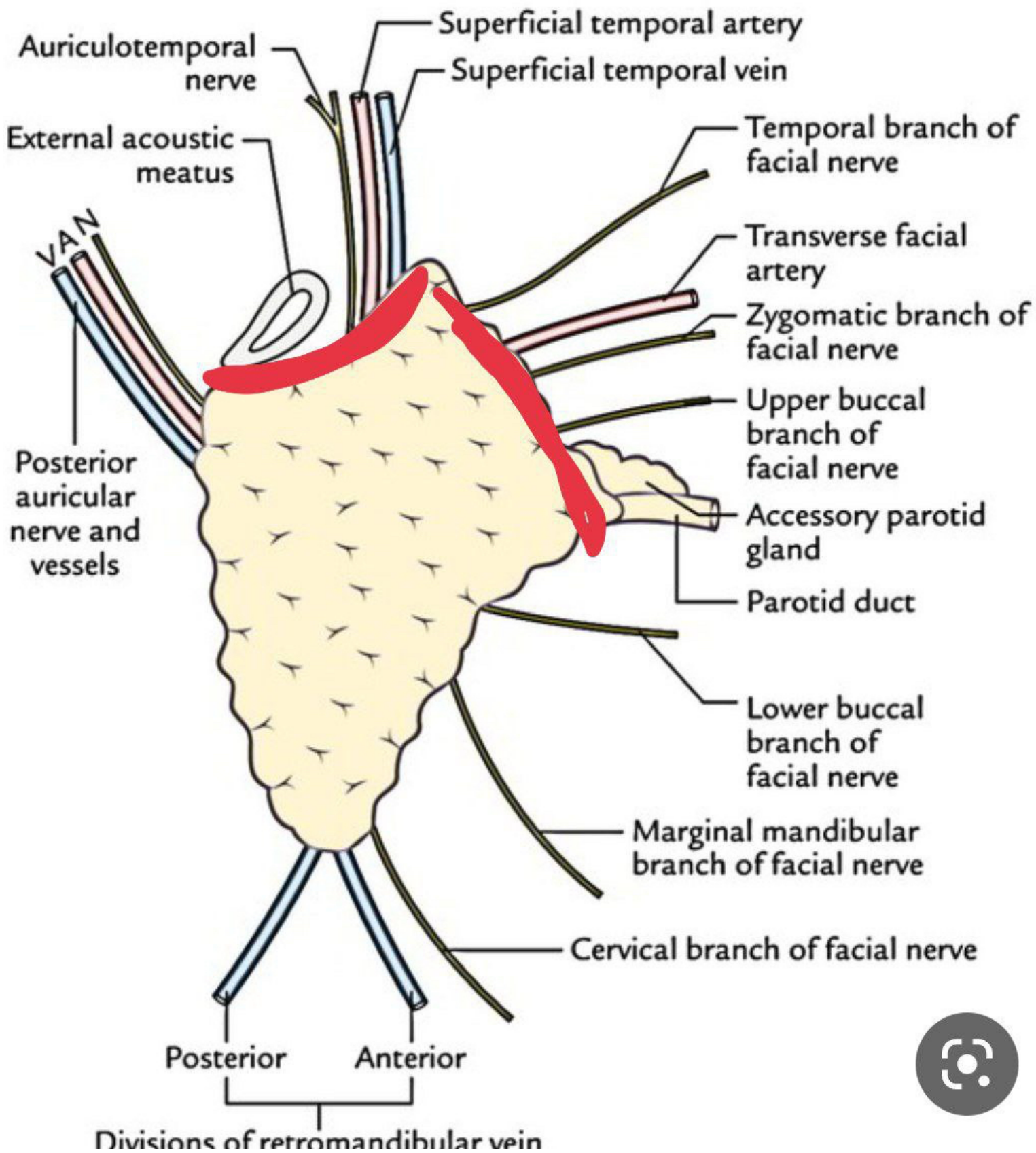




**Parotid gland**

**Sublingual gland**

**Submandibular gland**



## Parotid gland

