

وسهلا



أهلا

يُمنع أخذ السلايدات بدون
إذن المحرر واي اجراء
يخالف ذلك يقع تحت طائلة
المسؤولية القانونية
جميع المعلومات للاستخدام
التعليمي فقط

الأستاذ الدكتور يوسف حسين

رئيس قسم التشريح والأنسجة والأجنة

كلية الطب - جامعة مؤتة - الأردن

دكتورة من جامعة كولونيا المانيا

Prof. Dr. Youssef Hussein Anatomy - YouTube

الواتس 00201224904207

<https://www.youtube.com/@ProfDrYoussefHusseinAnatomy/playlists>

Submandibular gland

Prof. Dr. Youssef Hussein Anatomy - YouTube

اليوتيوب د. يوسف حسين

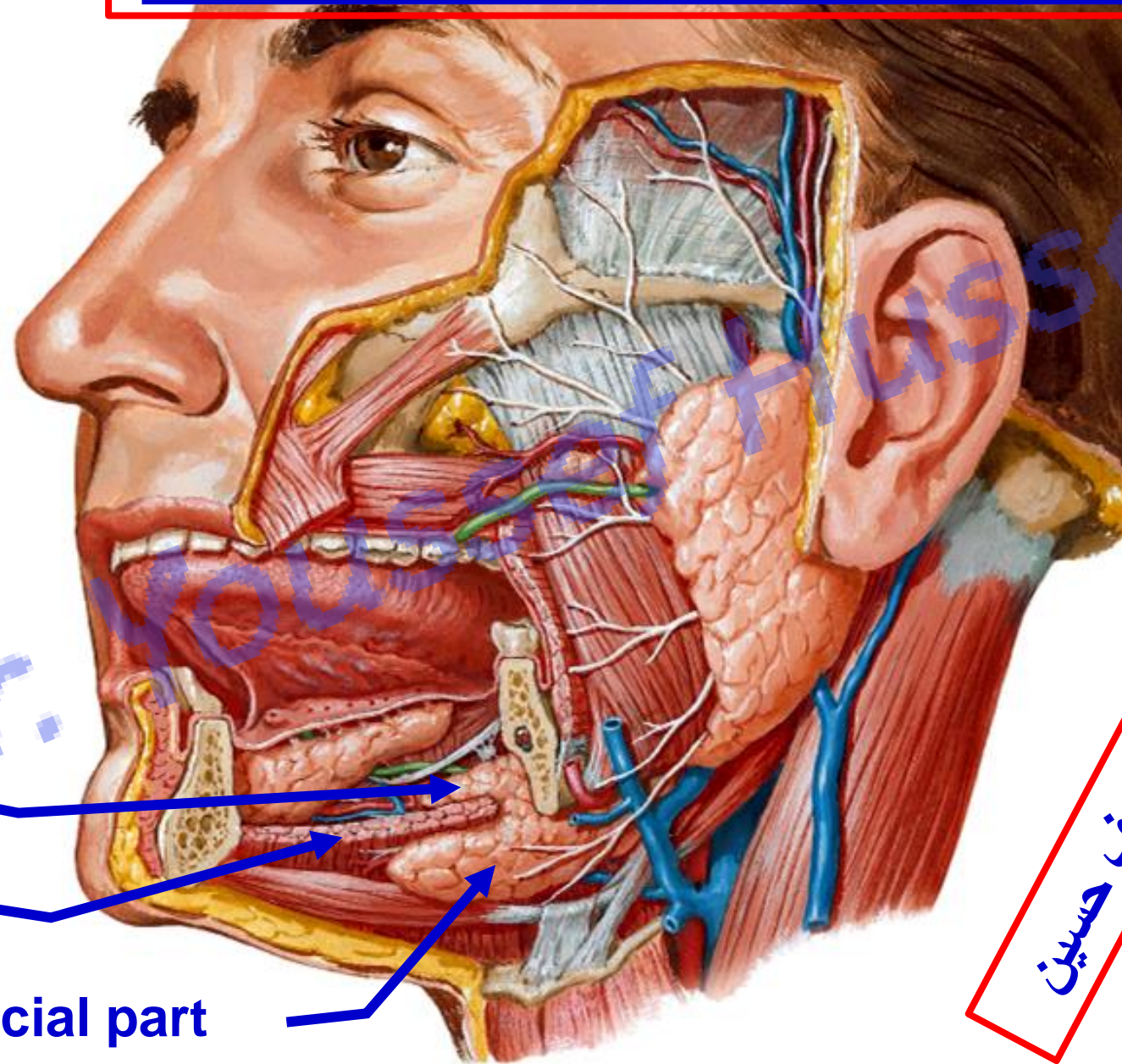
- **Type;** It is a mixed **Salivary** gland (**mucous and serous**).

- **Parts:**

- 1) Large superficial part.

- 2) Small deep part.

- The two parts are continues with each other at the posterior border of the mylohyoid muscle.

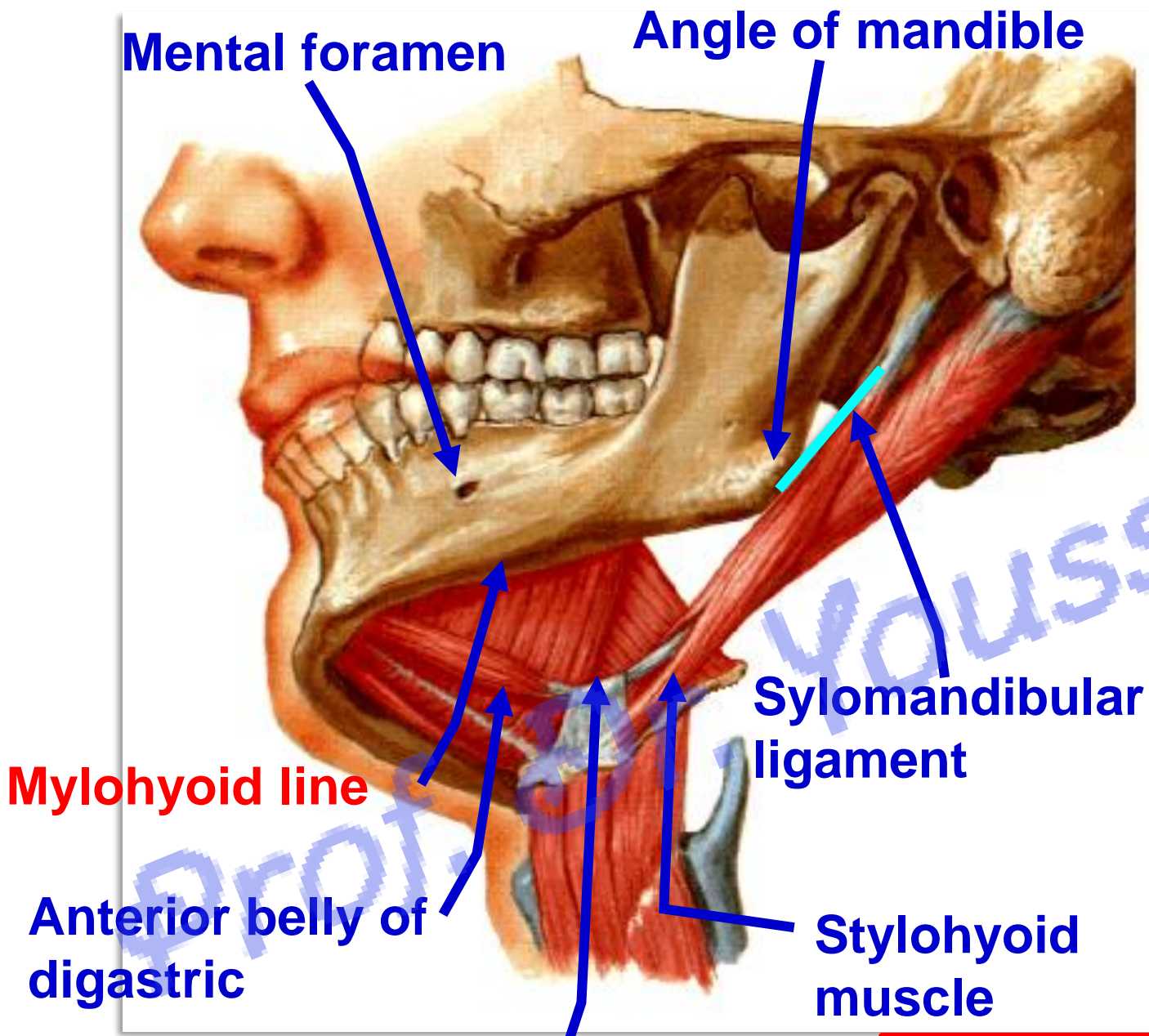


Deep part

Mylohyoid muscle

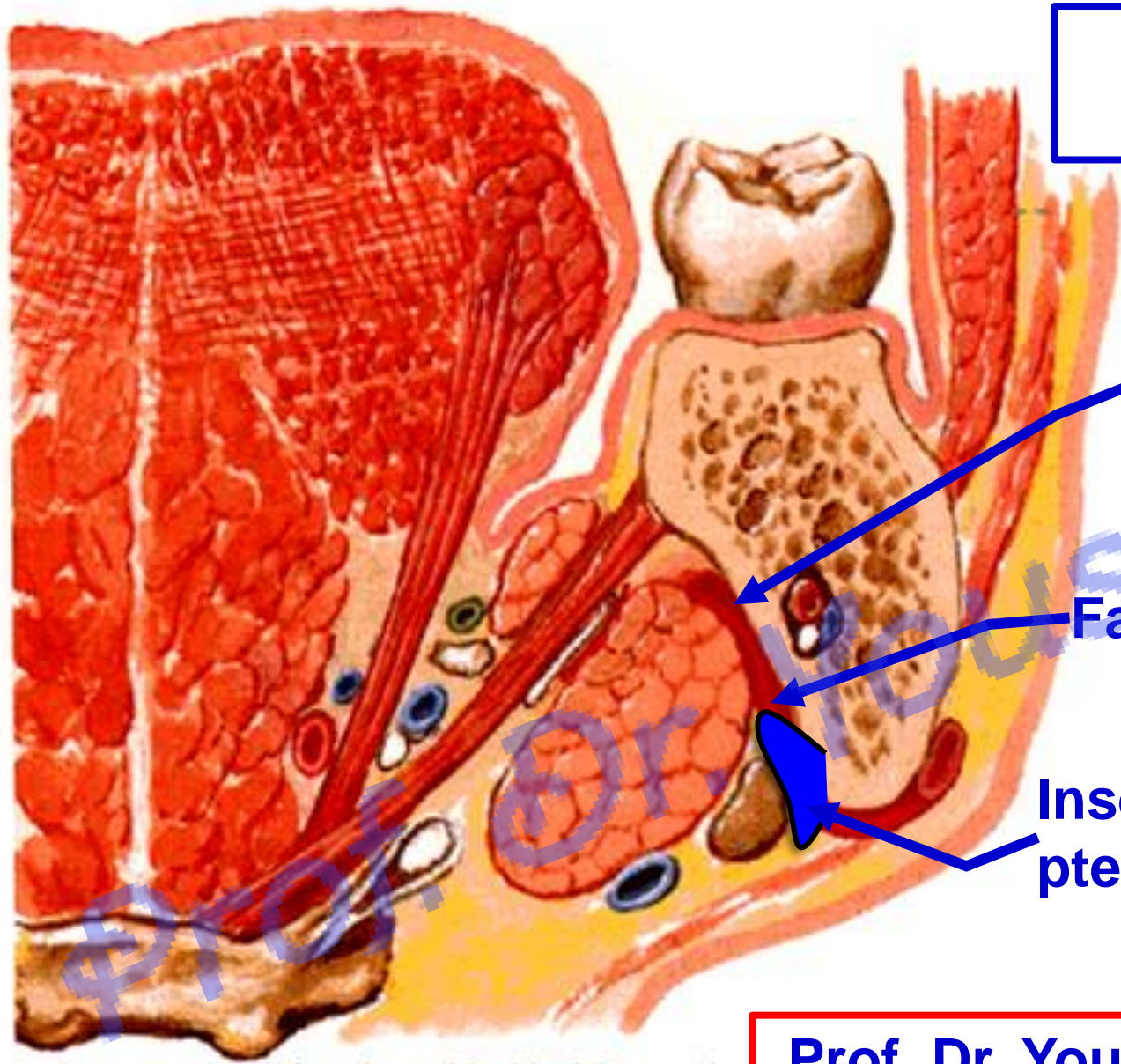
Superficial part

اليوتيوب د. يوسف حسين



- **Extension of the superficial part :**
 - It lies in the submandibular (digastric) triangle extending:
 1. **Anteriorly:** to the mental foramen, it overlaps the anterior belly of digastric muscle.
 2. **Posteriorly:** to the angle of mandible, it is separated from the parotid gland by the stylomandibular ligament.
 3. **Above:** mylohyoid line of mandible.
 4. **Below:** it overlaps the intermediate tendon of digastric.

Intermediate tendon of digastric



- Relations of the lateral surface of superficial part

- Shape: wedge shaped

Submandibular fossa of mandible

Facial artery

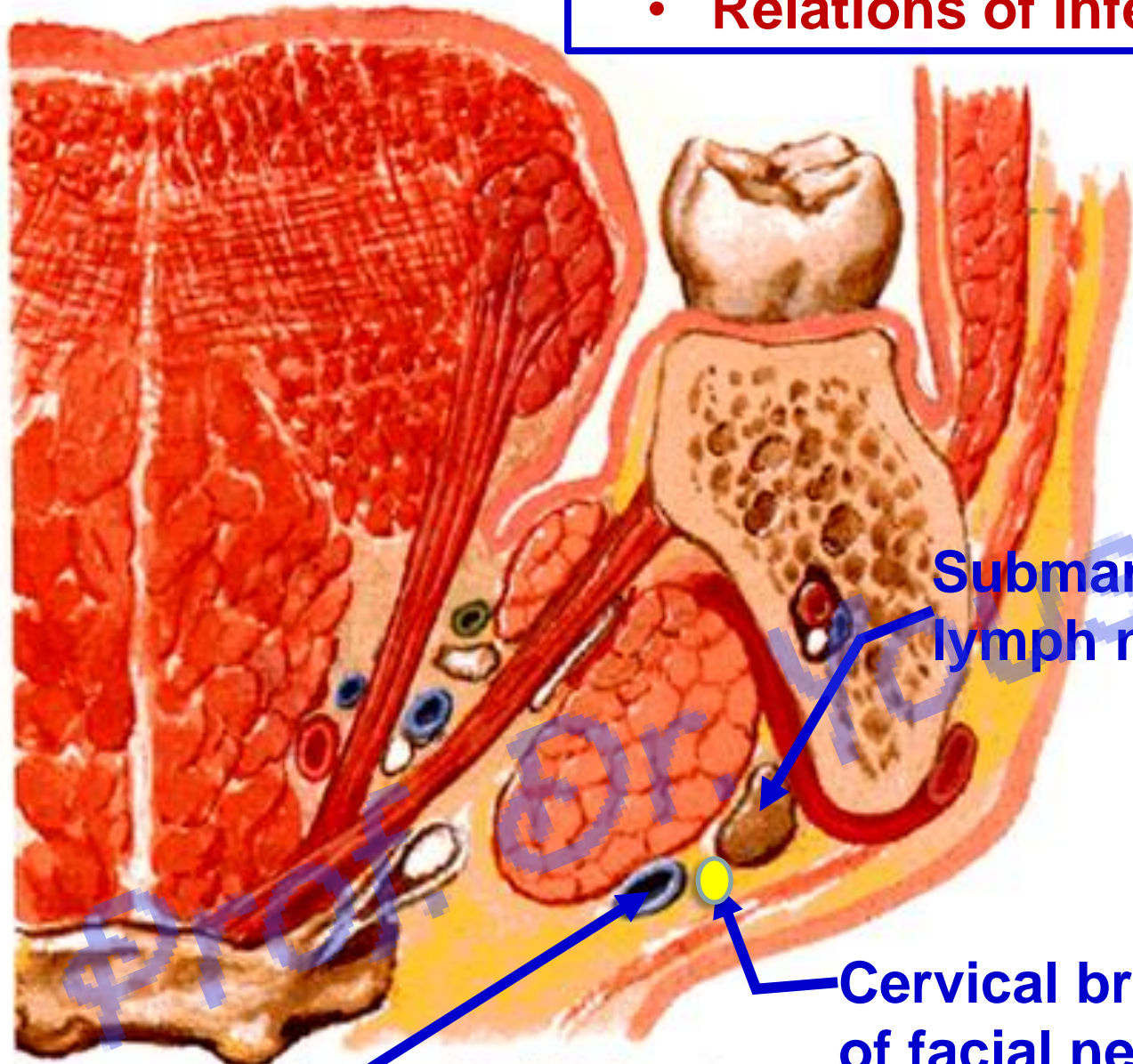
Insertion of medial pterygoid muscle

اليوتيوب د. يوسف حسين

[Prof. Dr. Youssef Hussein Anatomy - YouTube](#)

Coronal section

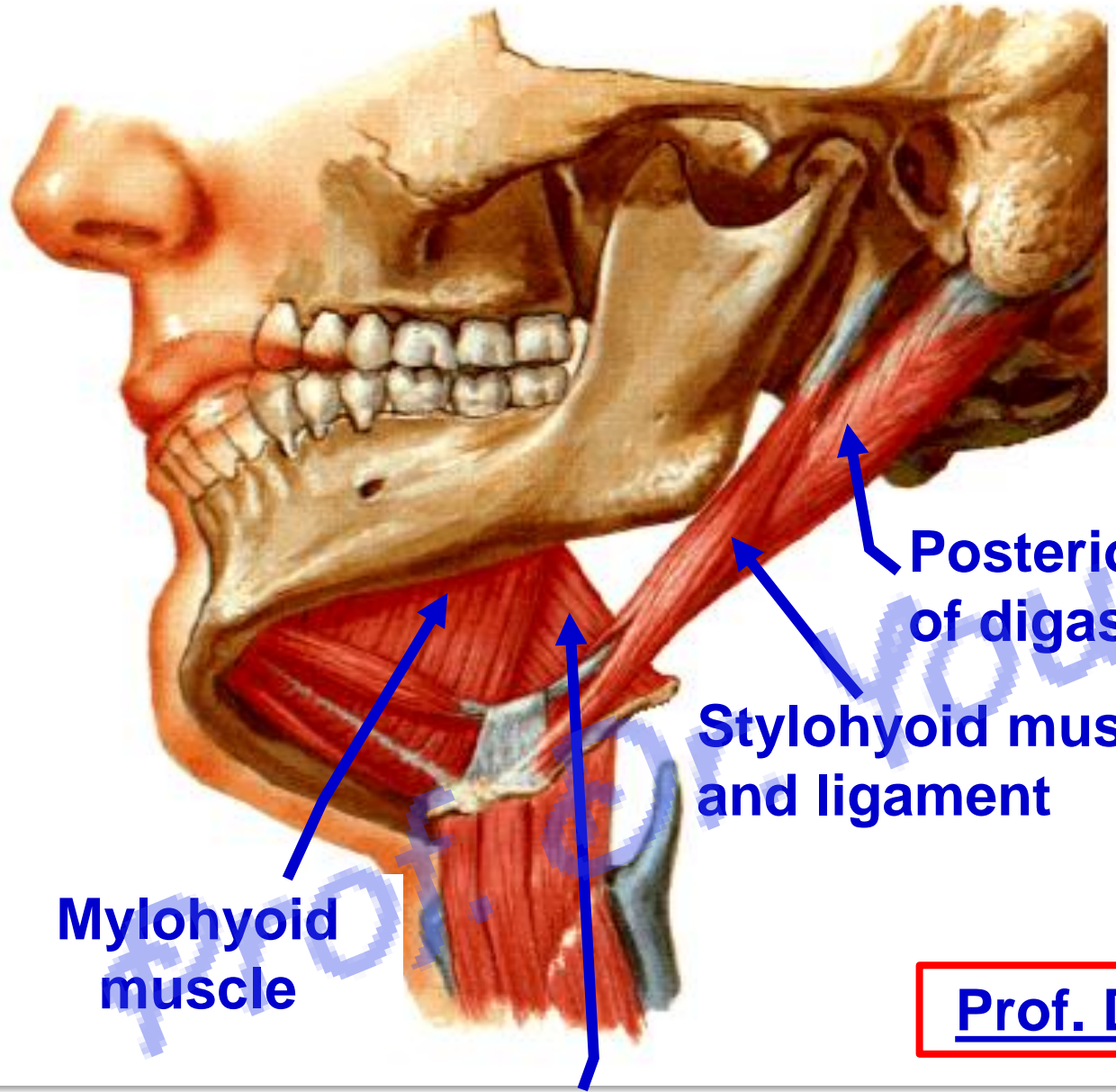
- **Relations of inferolateral surface of superficial part**



- (1) Skin.
- (2) Superficial fascia containing platysma and cervical branch of facial nerve.
- (3) Deep fascia.
- (4) Submandibular lymph nodes.
- (5) Anterior Facial vein.

Facial vein

Prof. Dr. Youssef Hussein Anatomy - YouTube



Mylohyoid muscle

Hyoglossus muscle

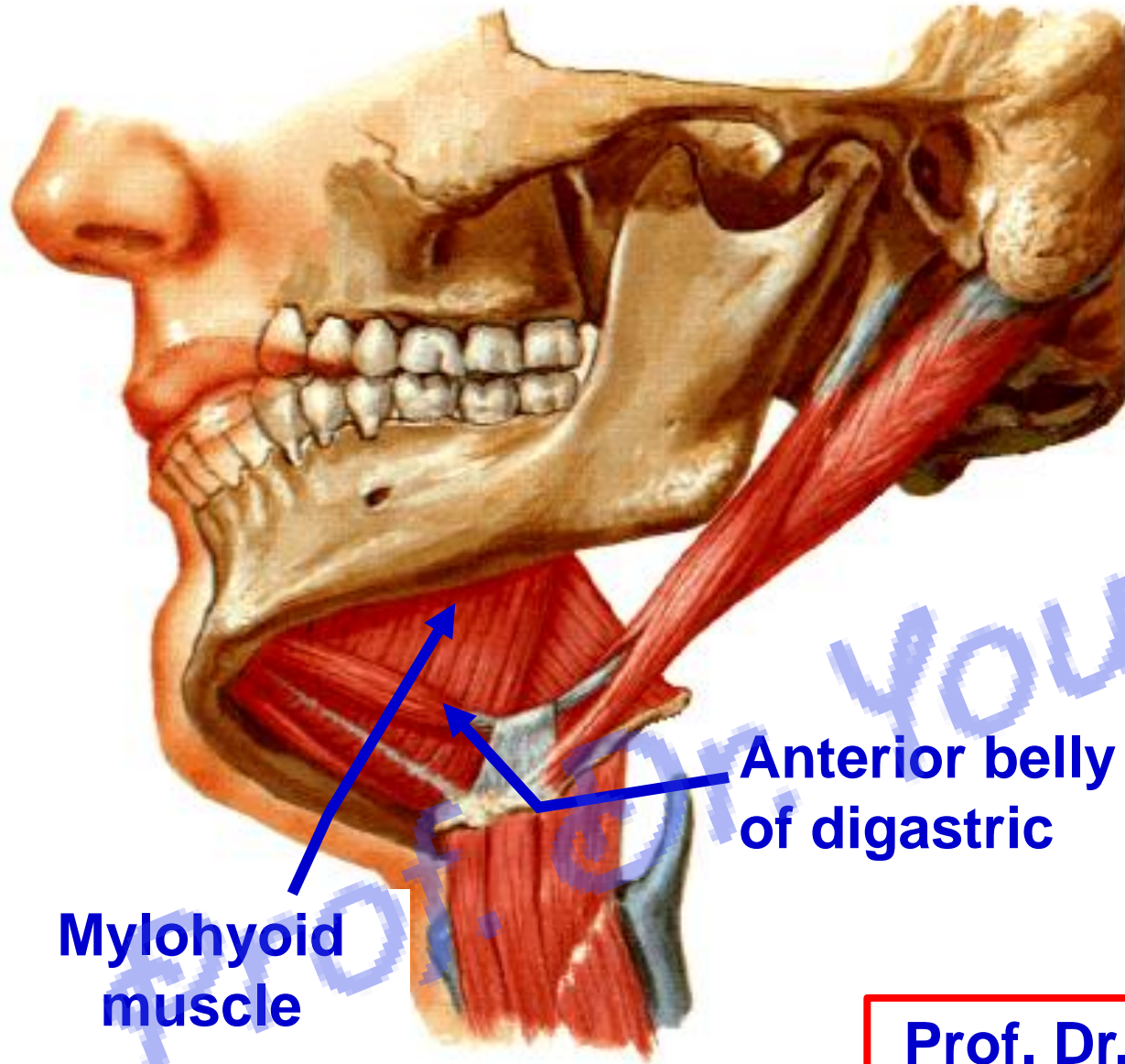
Stylohyoid muscle and ligament

Posterior belly of digastric

- **Relations of the medial surface of superficial part**

- Its **anterior part** is related to mylohyoid muscle
- Its **middle part** is related to hyoglossus muscle
- Its **posterior Part** is related to
 - (a) Posterior belly of digastric.
 - (b) Stylohyoid muscle and stylohyoid ligament.

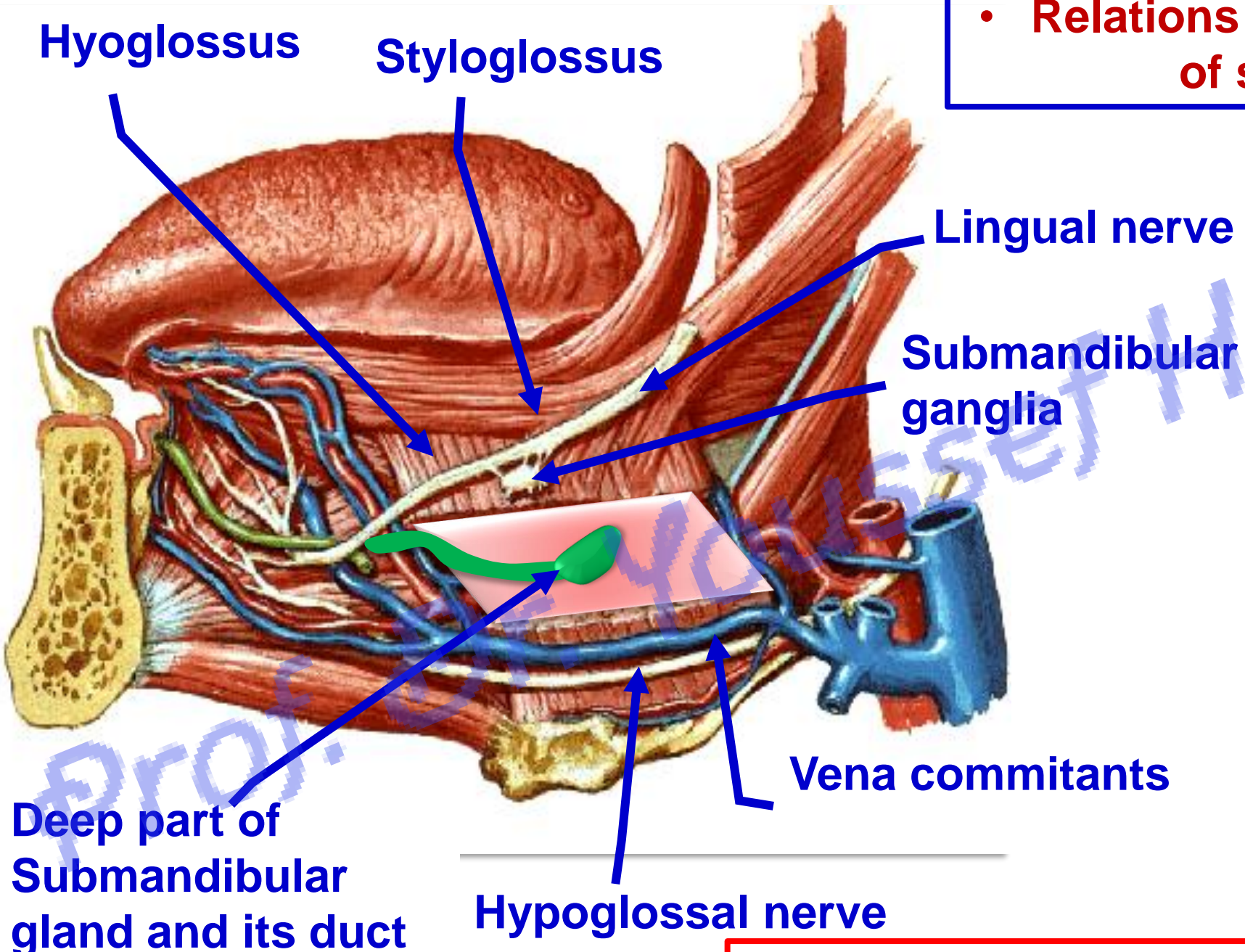
[Prof. Dr. Youssef Hussein Anatomy - YouTube](#)



- **Relations of the medial surface of superficial part**

- Its **anterior part** is related to mylohyoid muscle separated from it by
 - a) Mylohyoid nerve and vessels
 - b) Anterior belly of digastric muscle
 - c) Submental vessels.

• Relations of the medial surface of superficial part

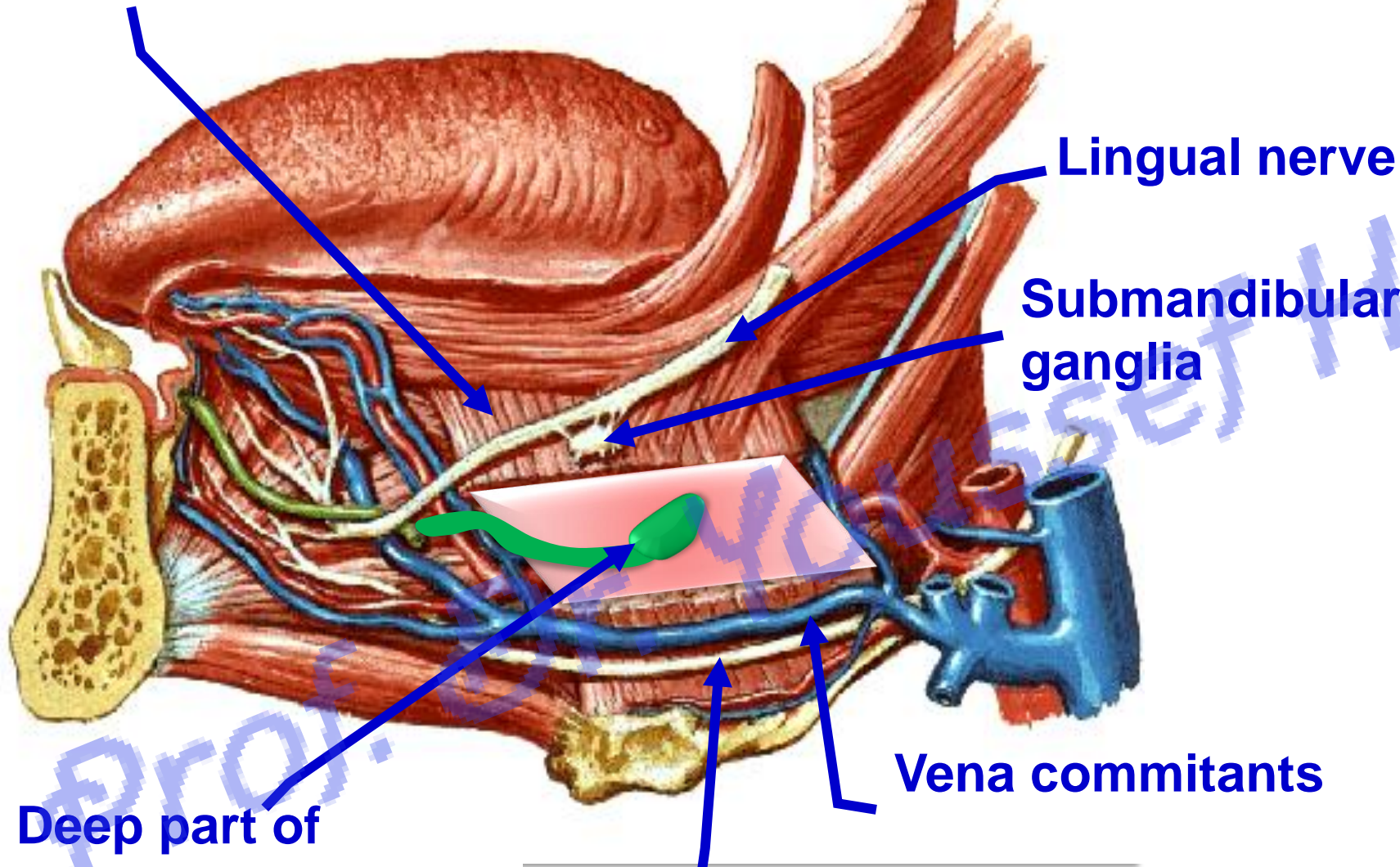


- Its **middle part** is related to hyoglossus muscle separated from it by from above downward:

Hyoglossus

• **Relations of the deep part and duct**

- Lingual nerve (**above**).
- Hypoglossal nerve and vena comitantes (**below**).
- Hyoglossus muscle (**Medially**).
- Mylohyoid muscle (**Laterally**).



Lingual nerve

Submandibular ganglia

Vena comitantes

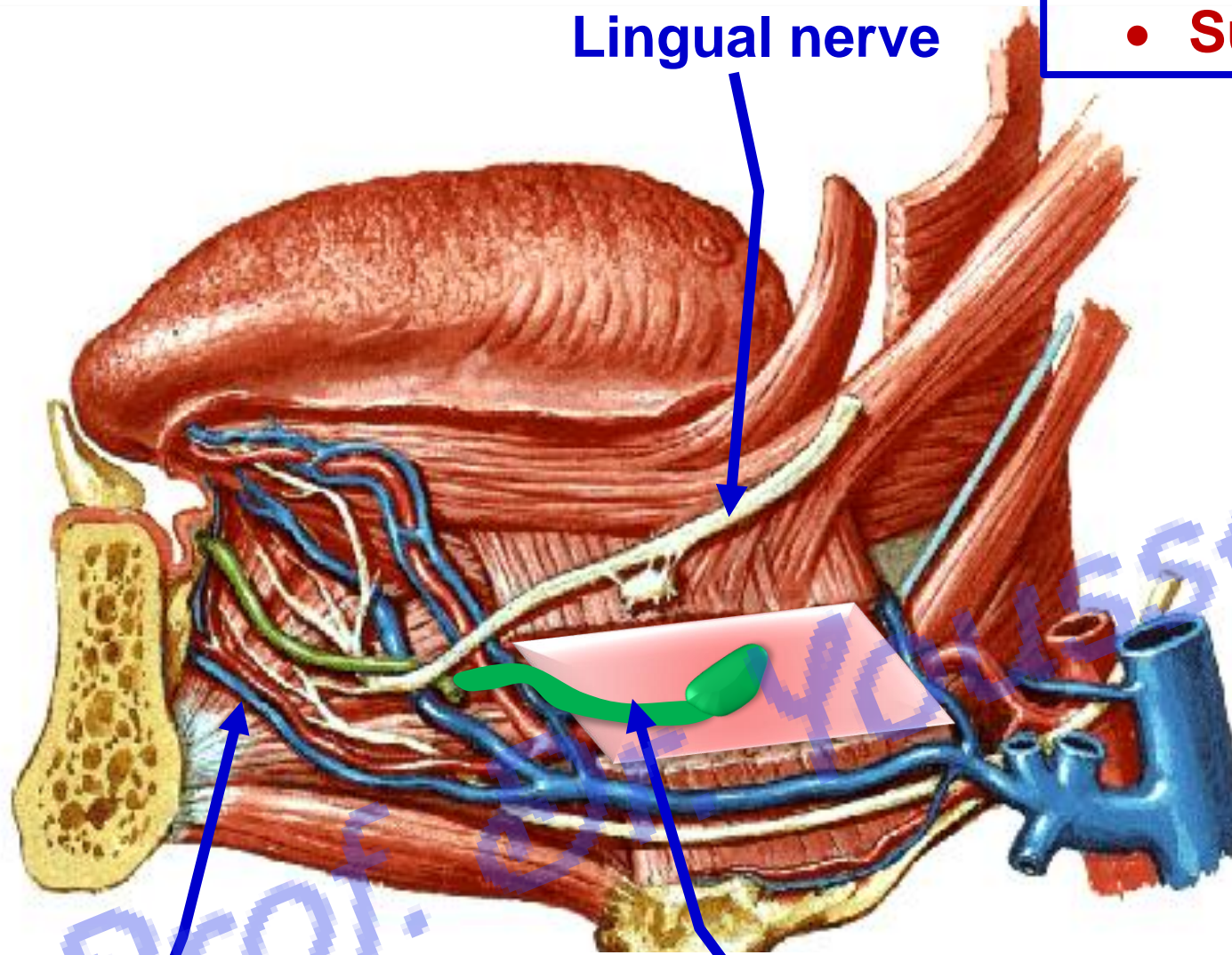
Deep part of Submandibular gland and its duct

Hypoglossal nerve

Lingual nerve

• Submandibular (Wharton's) duct

- **Length:** 5 cm long.
- It passes between genioglossus (medially) and sublingual gland (laterally).
- **Lingual nerve** has triple relations with duct: **lateral, below, medial.**
- **Ends;** opens into sublingual papilla in floor of mouth close to frenulum of tongue.



Genioglossus

Deep part of
Submandibular
gland and its duct

Prof. Dr. Youssef Hussein Anatomy - YouTube

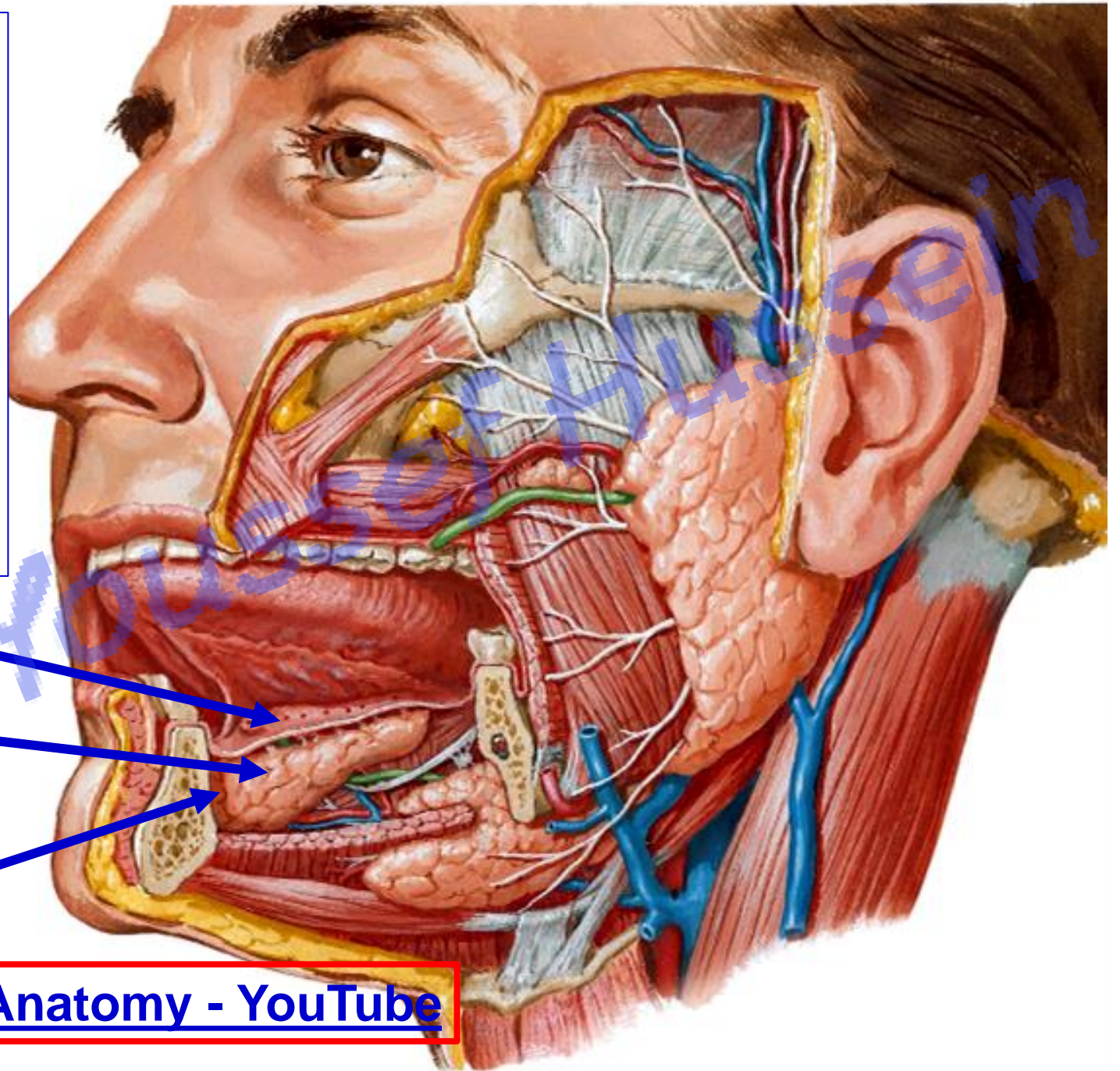
<https://www.youtube.com/@ProfDrYoussefHusseinAnatomy/playlists>

Sublingual gland

Prof. Dr. Youssef Hussein Anatomy - YouTube

اليوتيوب د. يوسف حسين

- **Site:** It lies under the mucous membrane of the floor of the mouth forming sublingual fold and occupying the sublingual fossa of the mandible.
- **Size:** it is the smallest of the 3 salivary glands.
- **Shape:** almond shaped.



Mucus membrane

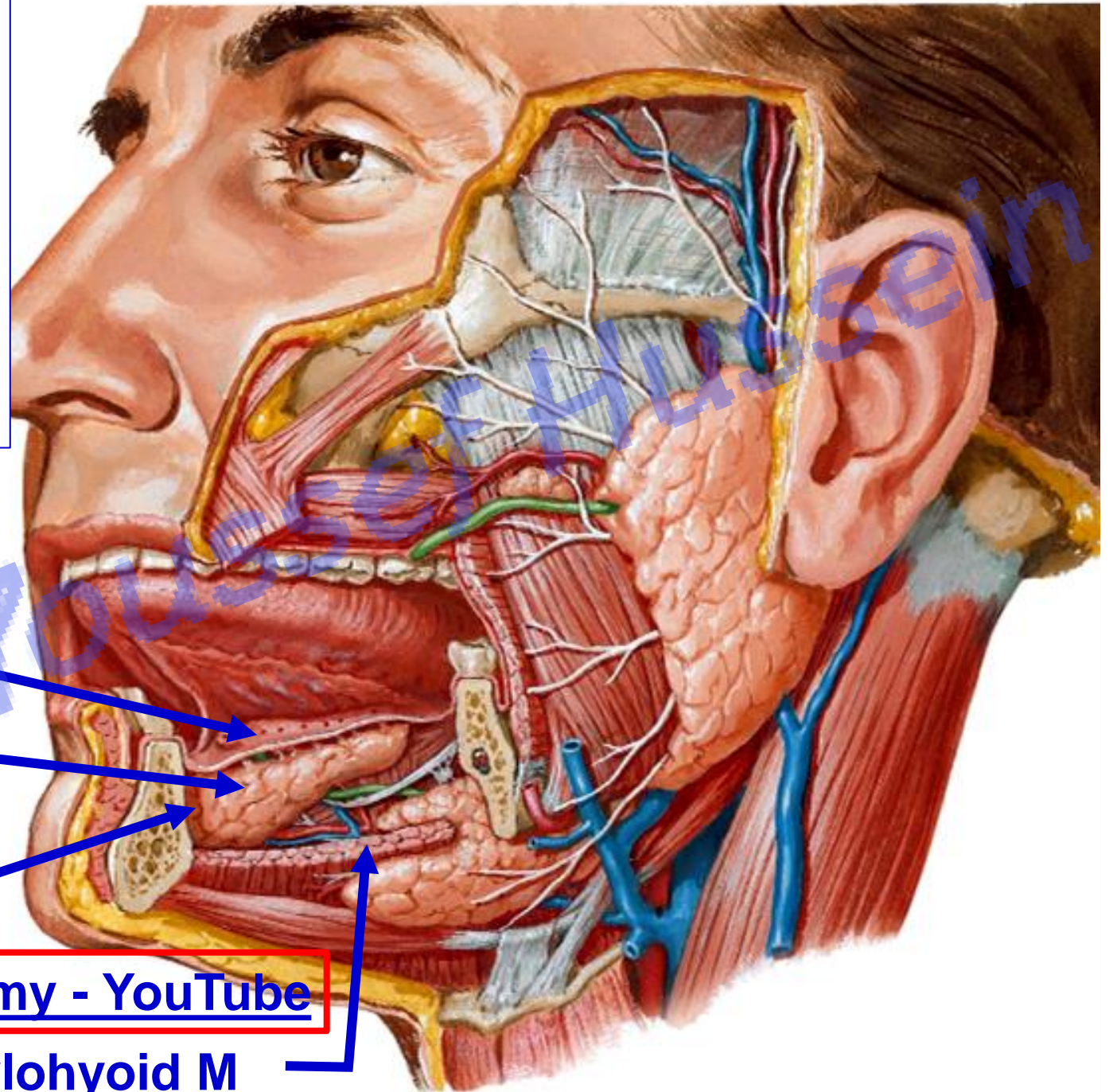
Sublingual gland

Sublingual fossa

Prof. Dr. Youssef Hussein Anatomy - YouTube

- **Relations:**

- **Superiorly:** mucous membrane of the floor of the mouth.
- **Inferiorly:** mylohyoid muscle.
- **Laterally:** sublingual fossa of mandible.



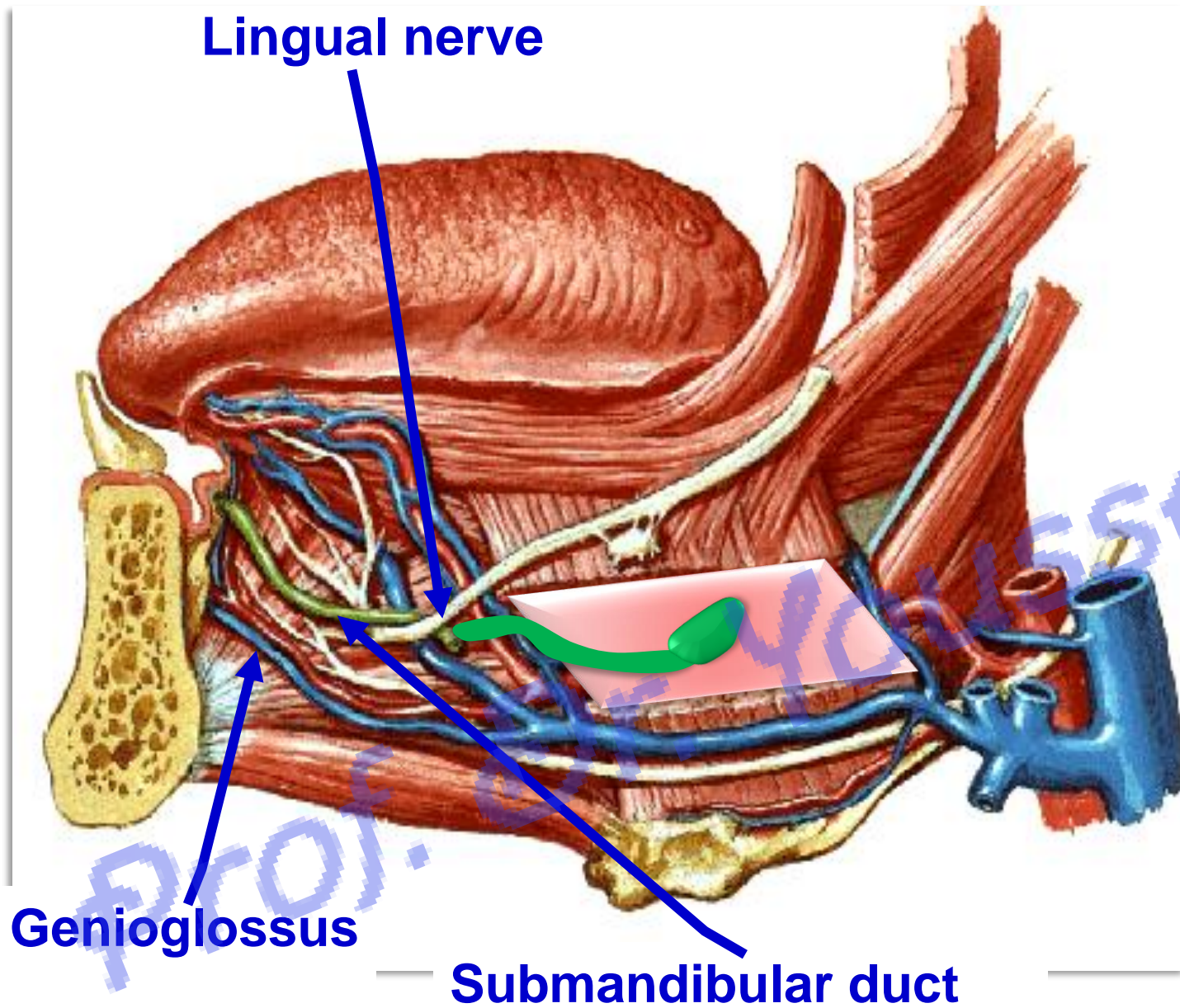
Mucus membrane

Sublingual gland

Sublingual fossa

[Prof. Dr. Youssef Hussein Anatomy - YouTube](#)

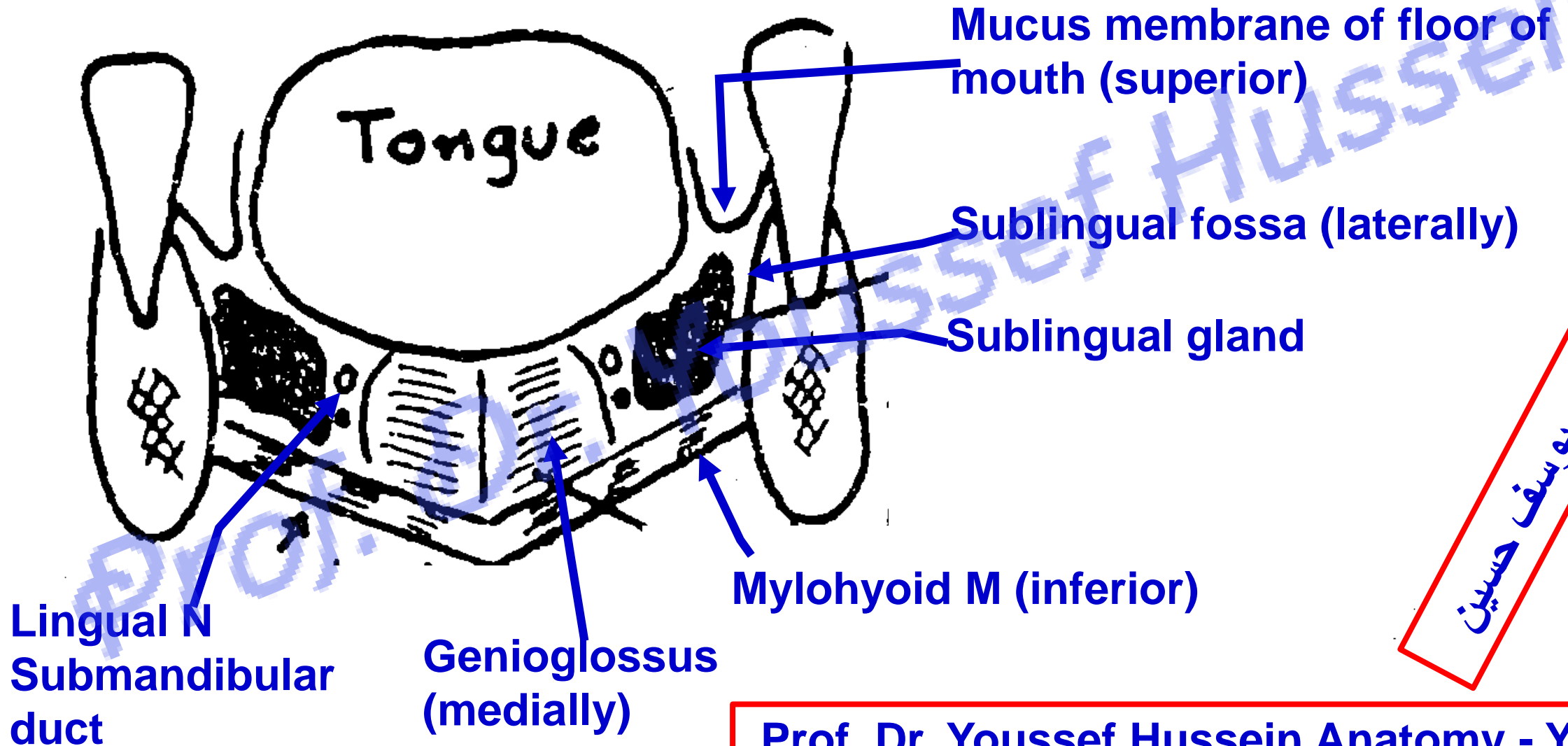
Mylohyoid M



Medial relations of sublingual gland: genioglossus muscle separated from it by the lingual nerve and submandibular duct.

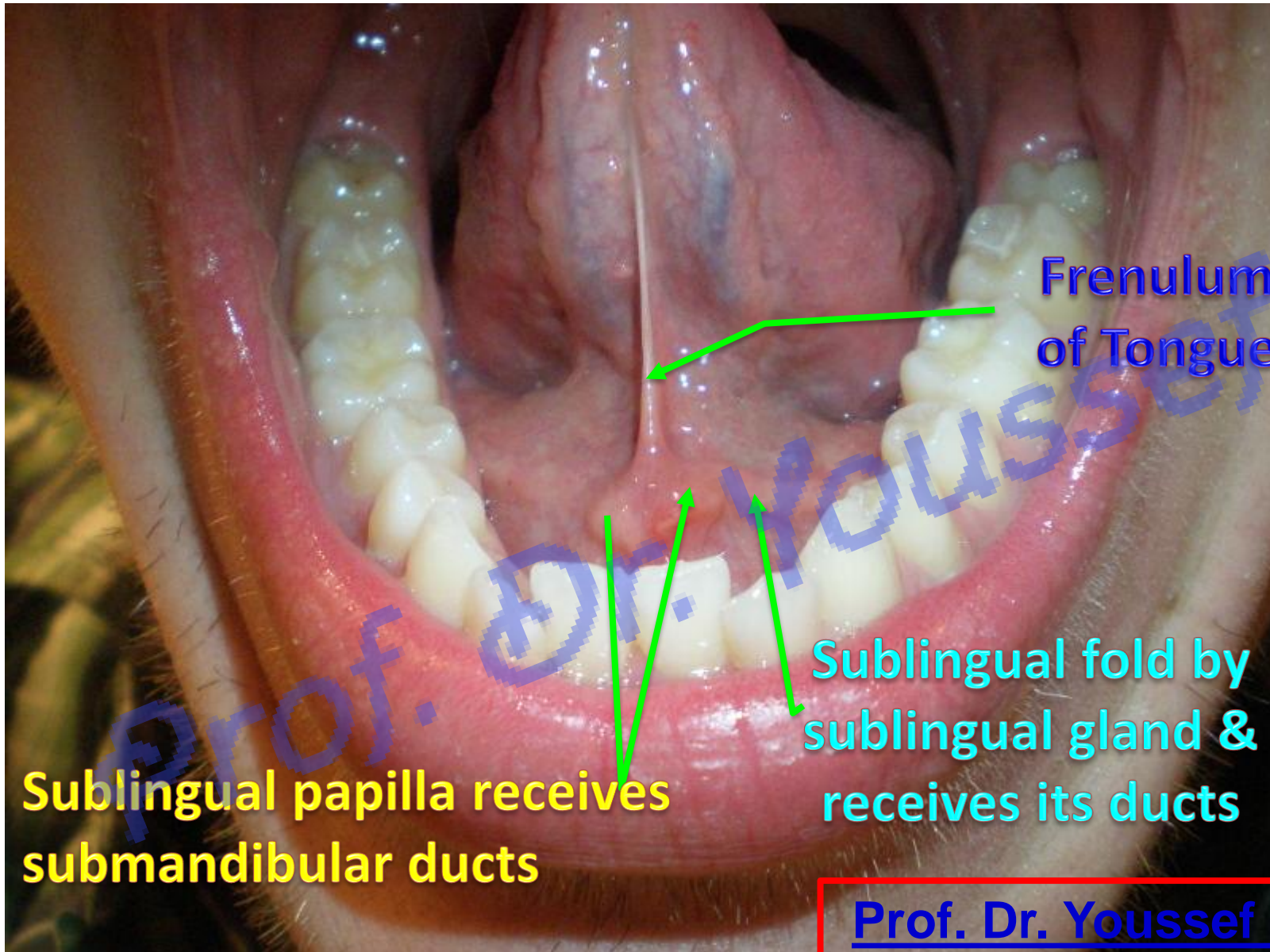
الـيـوسـفـ حـسـيـن
د . يـوسـفـ حـسـيـن

- **Relations of sublingual gland**
 - **Coronal section**



الـيـوتـيـوبـ دـ.ـ يـوسـفـ حـسـيـن

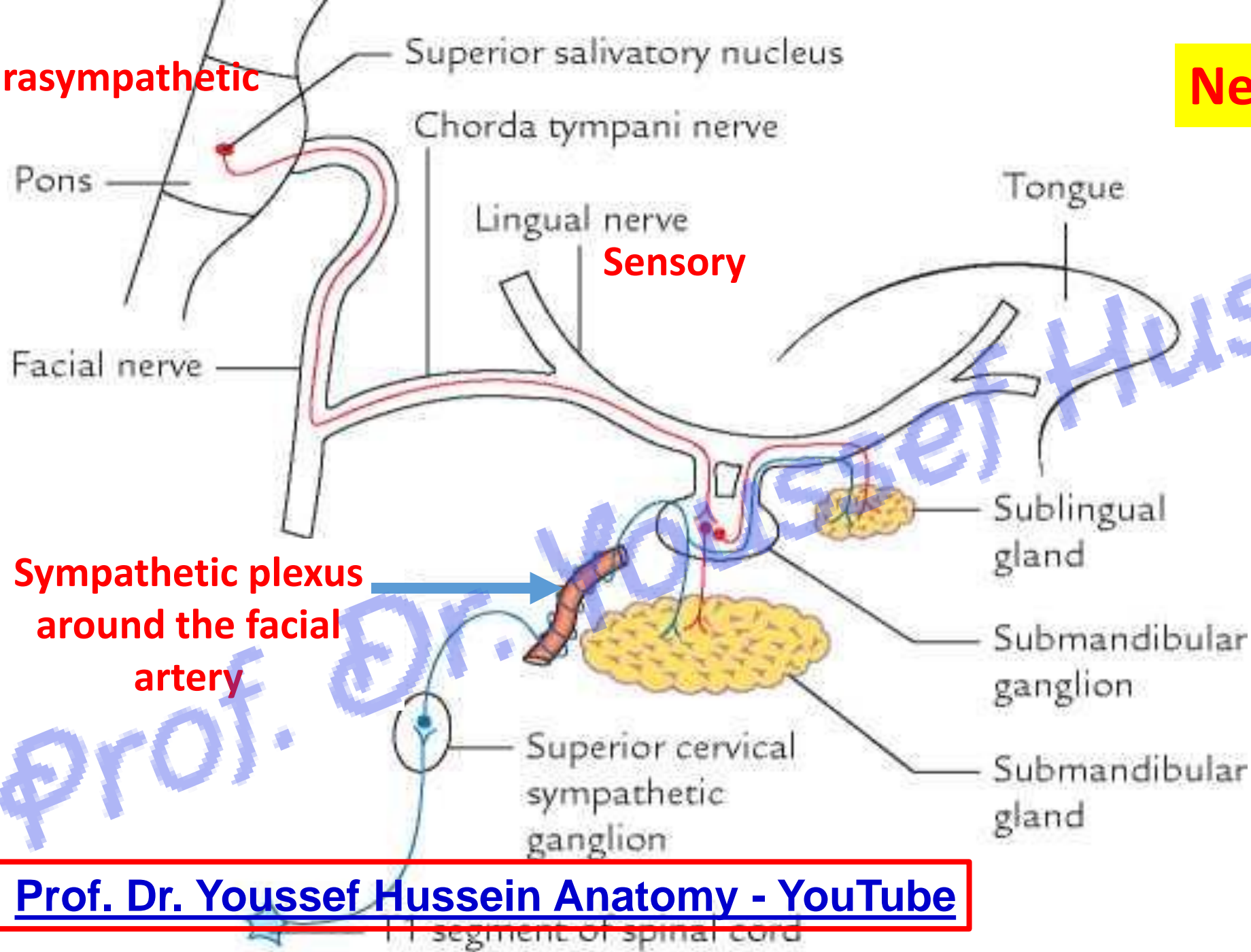
Floor of mouth cavity



- **Submandibular duct** opens into **sublingual papilla** in floor of mouth close to frenulum of tongue.
- **Sublingual gland** gives about 10-20 ducts which open into **sublingual fold** in floor of mouth.

Parasympathetic

Nerve supply



Prof. Dr. Youssef Hussein Anatomy - YouTube

اليوتيوب د. يوسف حسين

- The **stones** affect the **submandibular duct**
- **Causes:** Dehydration, medications such as diuretics and anticholinergic drugs, Trauma to the inside of the mouth or Smoking
- **The main symptoms** are pain and swelling in the gland and under the tongue. Pain becomes worse during and after eating.



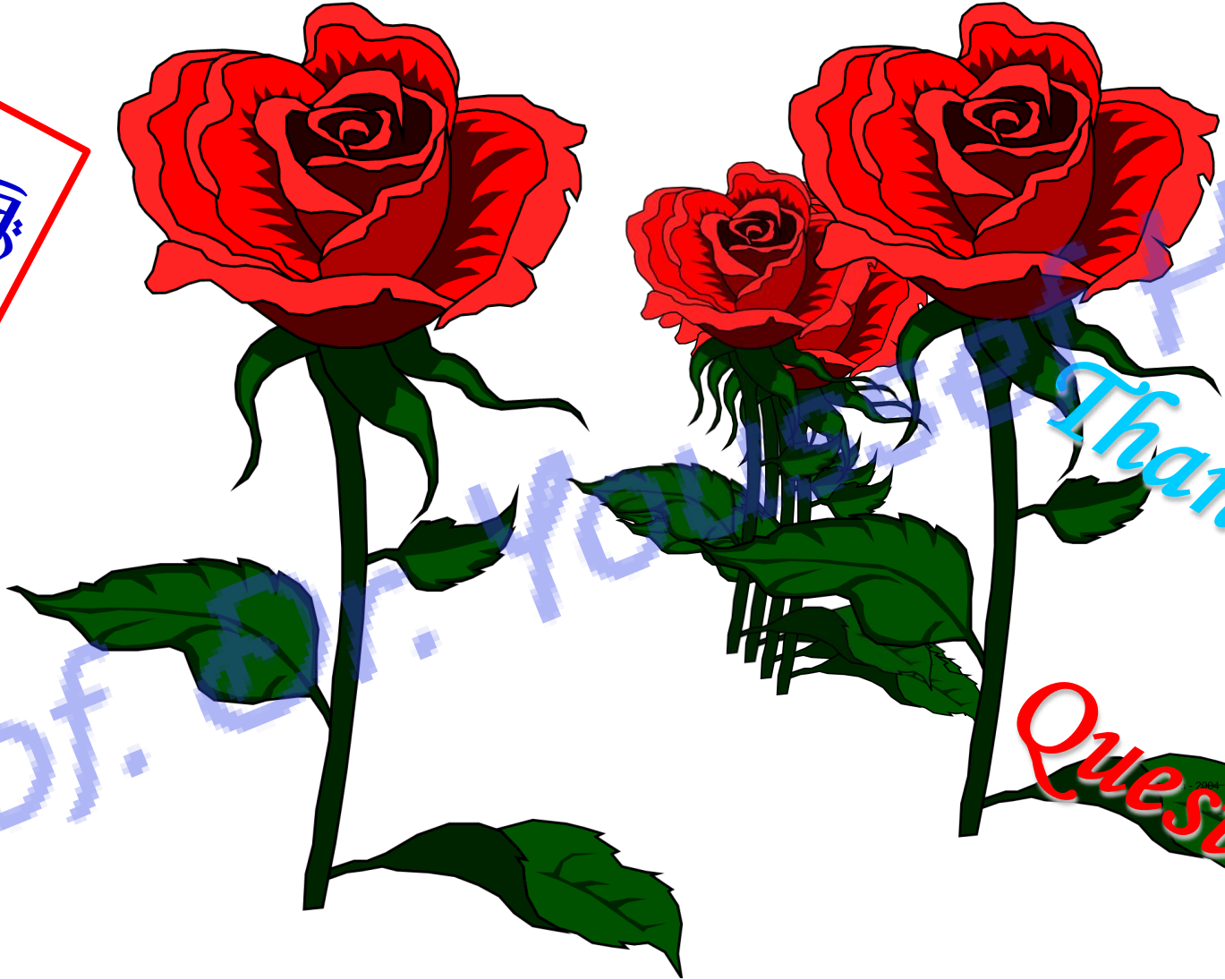
[Prof. Dr. Youssef Hussein Anatomy - YouTube](https://www.youtube.com/@ProfDrYoussefHusseinAnatomy/playlists)

<https://www.youtube.com/@ProfDrYoussefHusseinAnatomy/playlists>

https://www.youtube.com/channel/UCVSNqbibj9UWYaJdd_cn0PQ

يُمنع أخذ السلايدات بدون
إذن المحرر و اي اجراء
يخالف ذلك يقع تحت طائلة
المسؤولية القانونية
جميع المعلومات للاستخدام
التعليمي فقط

اليوتيوب د. يوسف حسين



Thank You
Questions

<https://www.youtube.com/@ProfDrYoussefHusseinAnatomy/playlists>