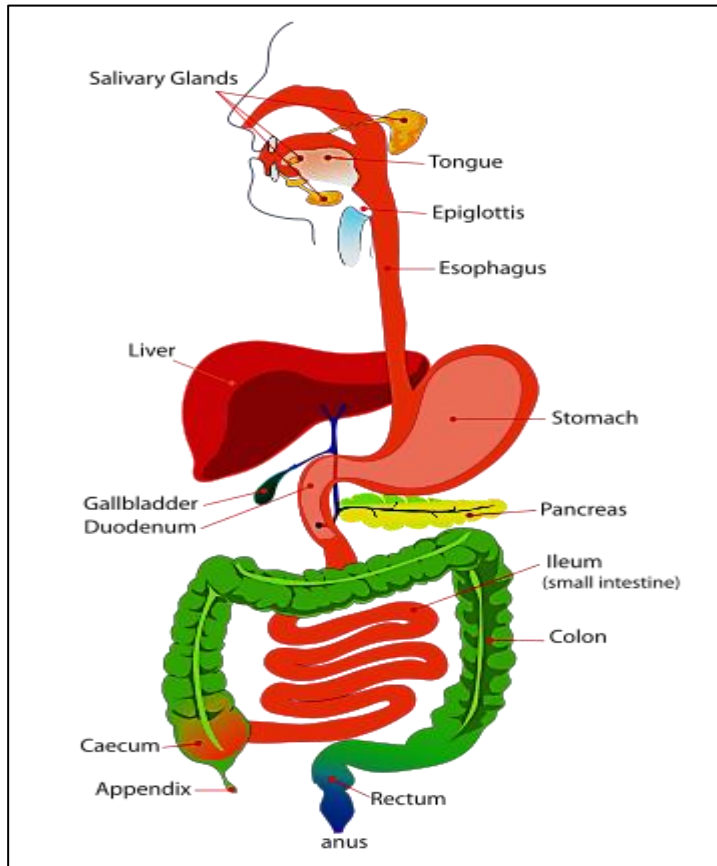


The digestive system



Histo lab 1

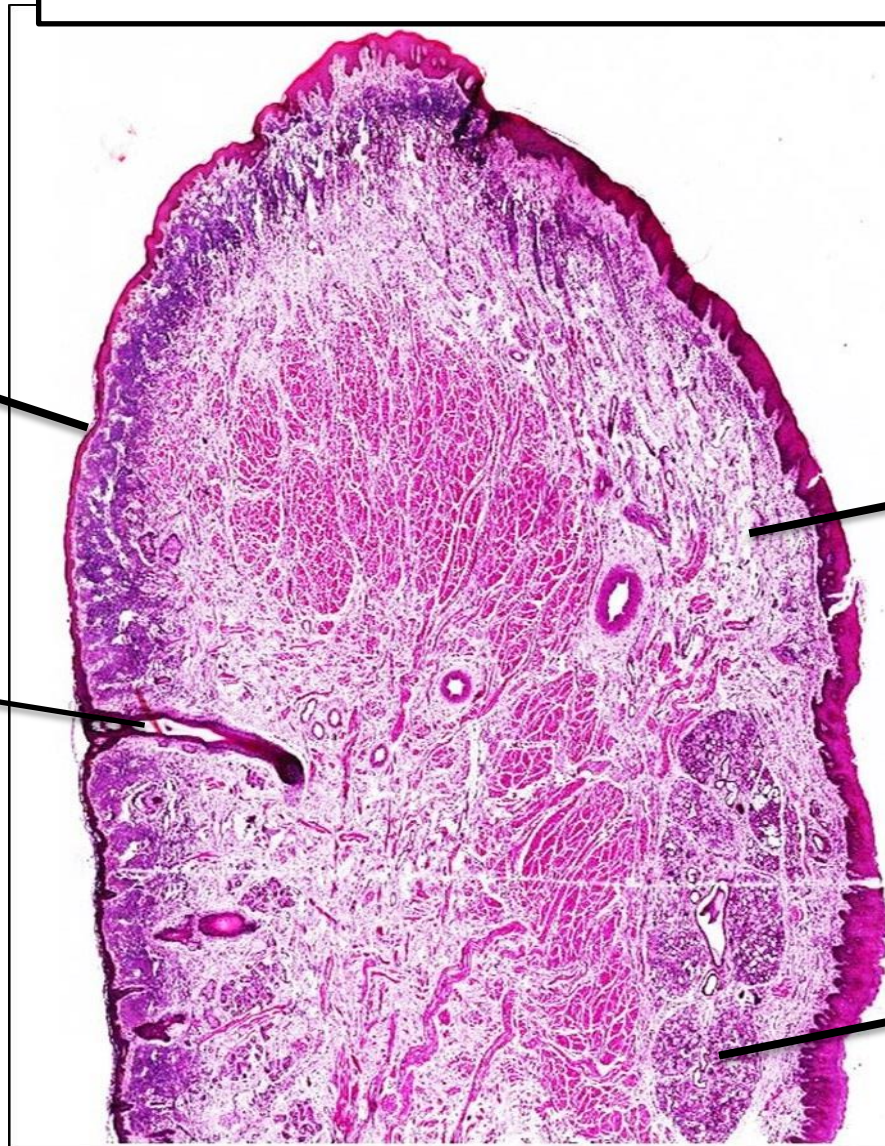
lip

External wall
(skin)

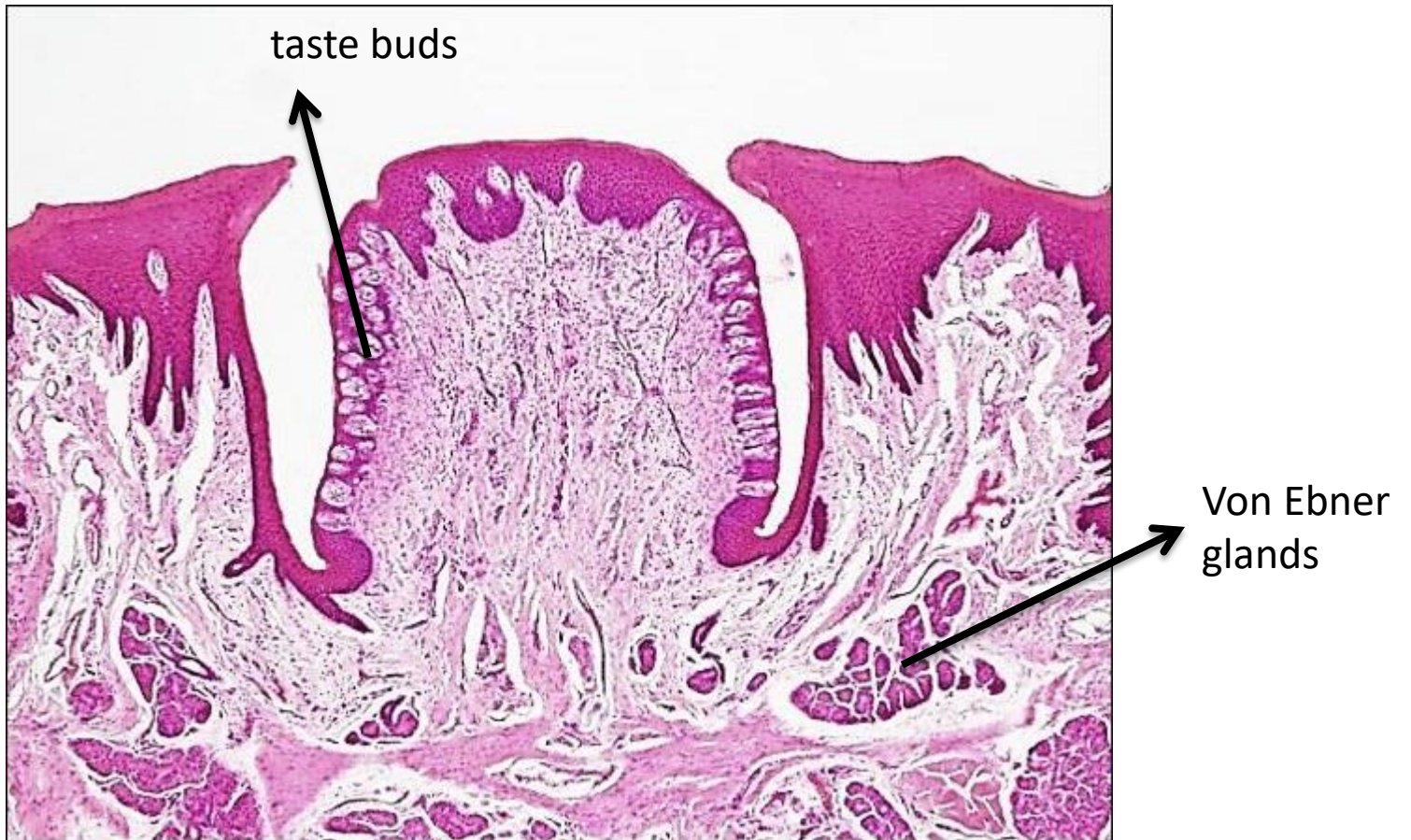
Hair
follicle

Internal surface
M.M

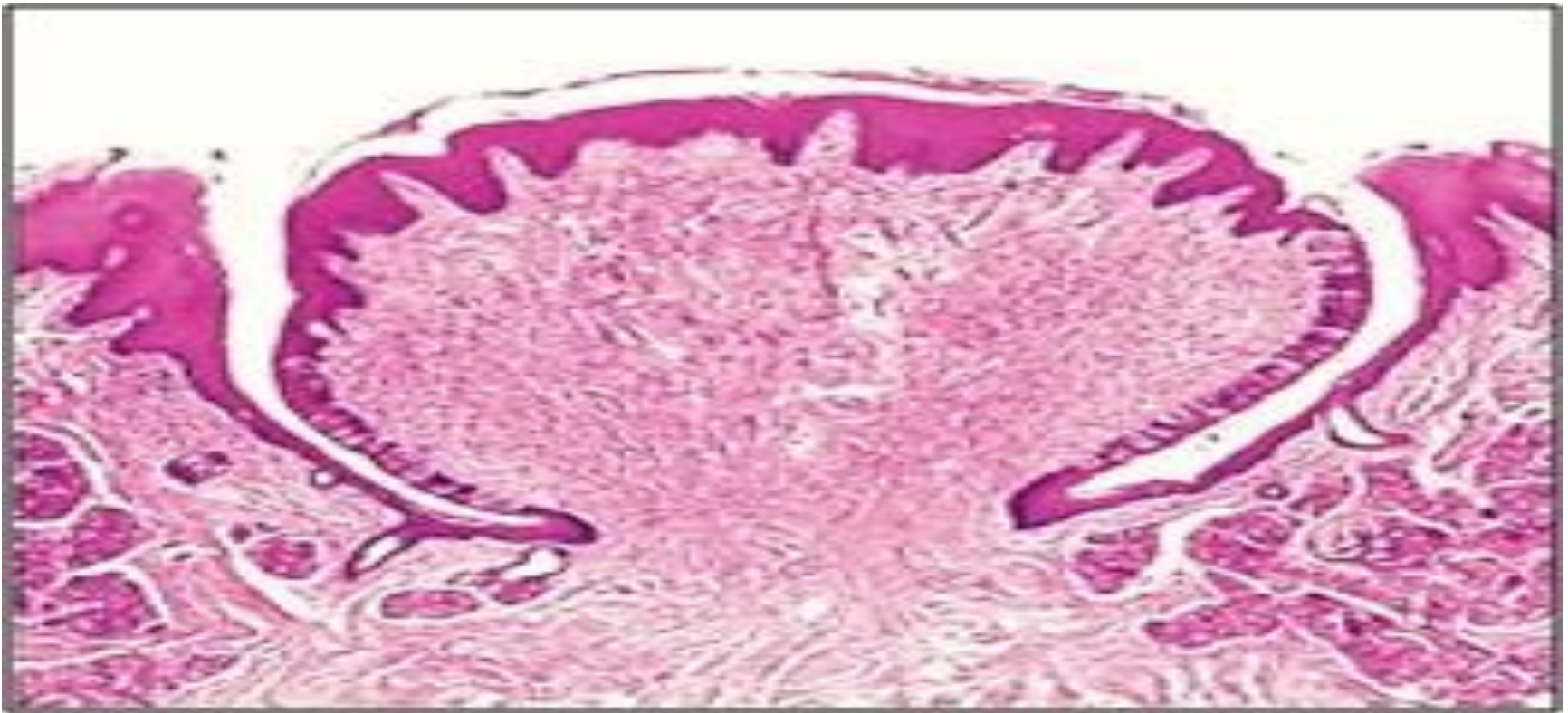
Libial gland



Circumvallate papillae



Circumvallate papillae

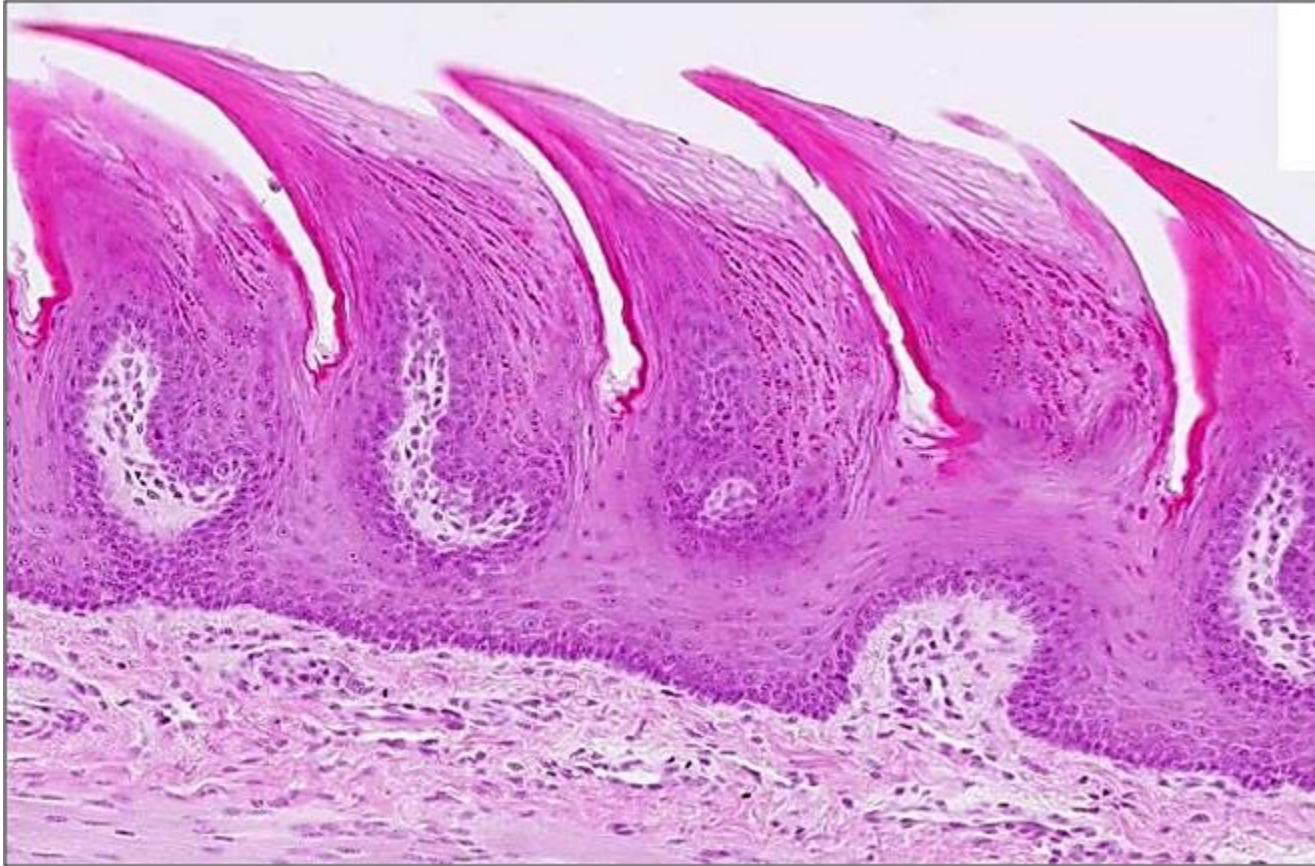


Foliate papillae:

Von Ebner
glands

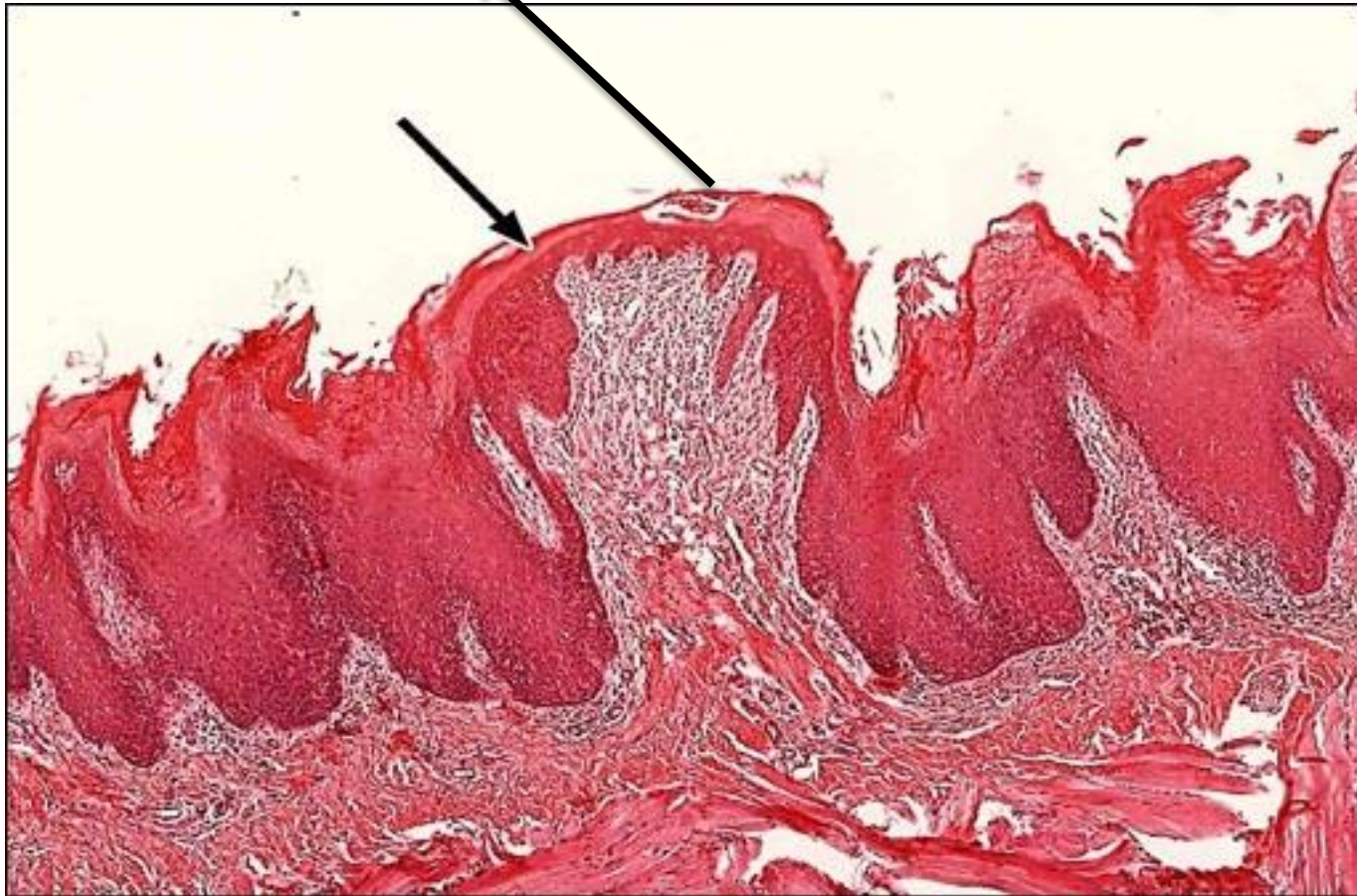


Filiform papillae:

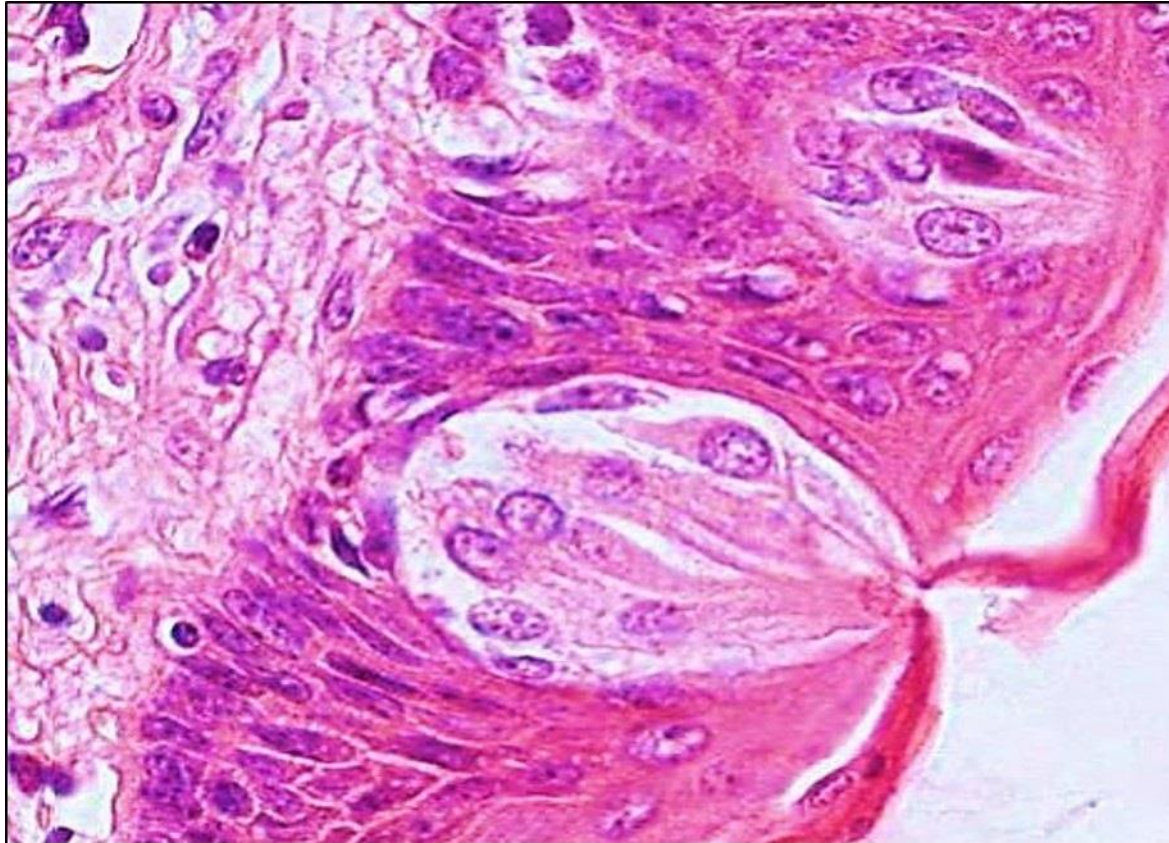


Fungiform papillae

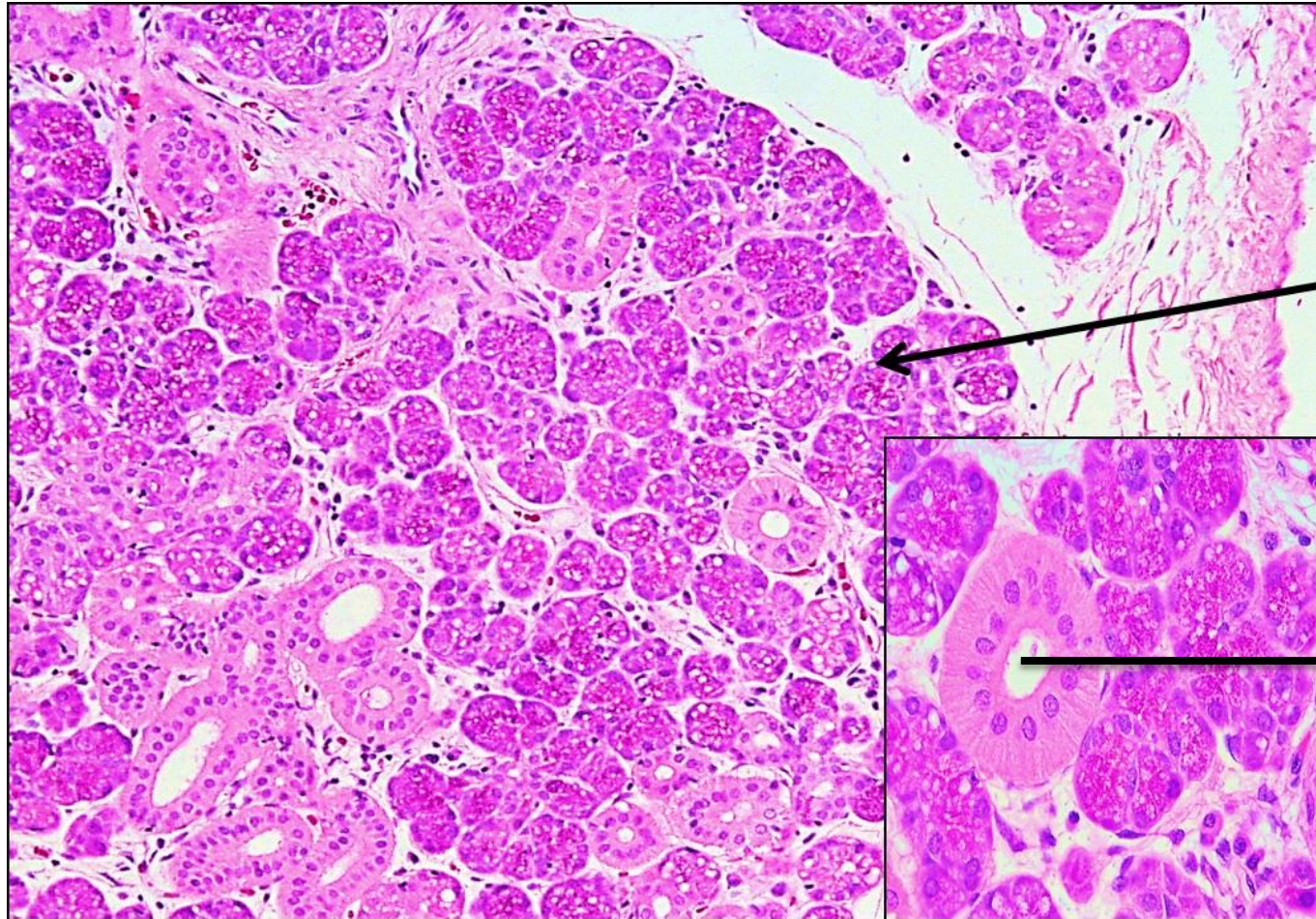
Test buds



Test buds



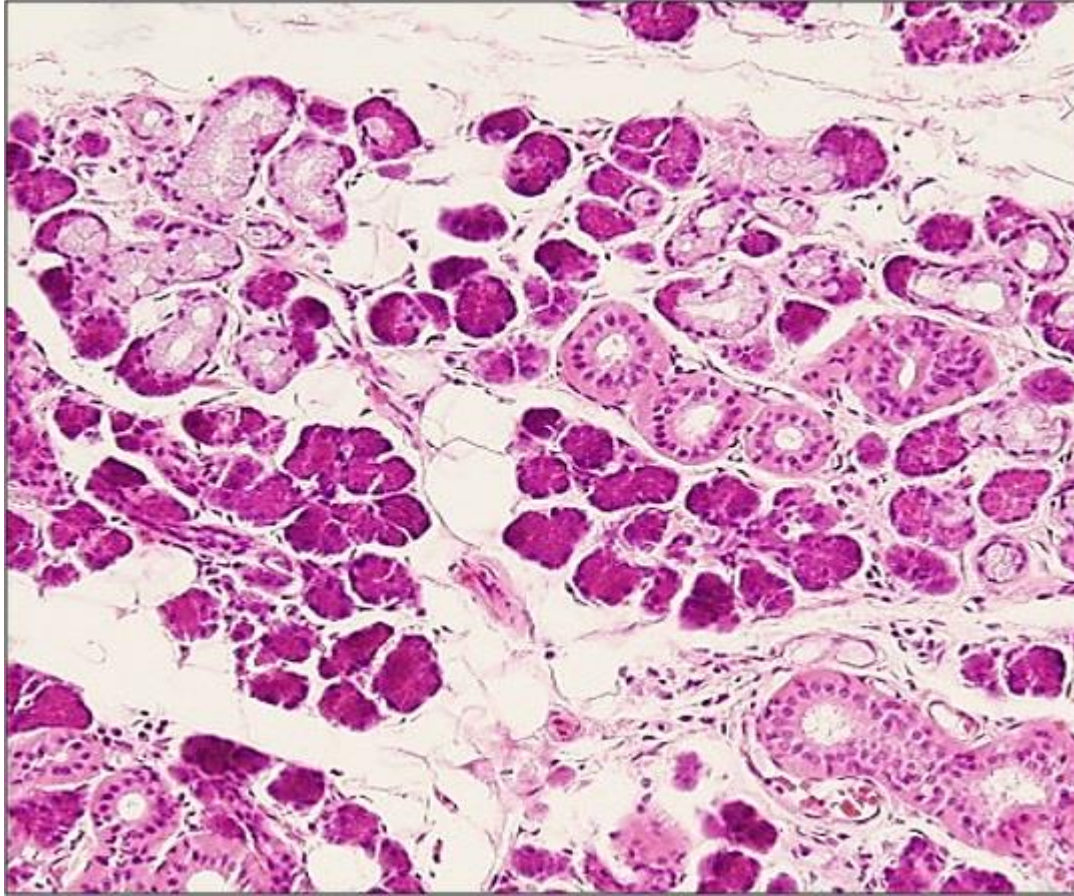
Parotid gland



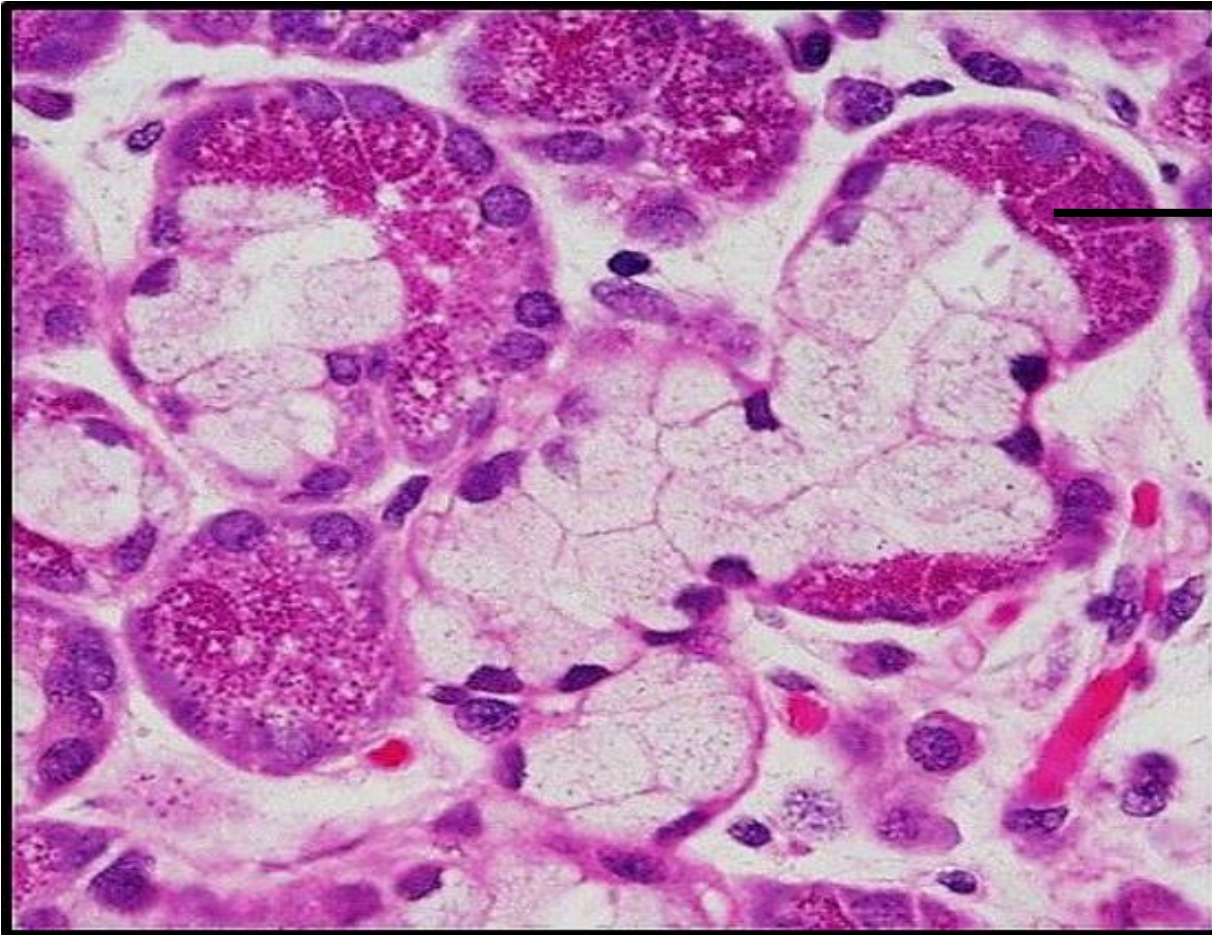
serous

Striated
(secretory)
ducts

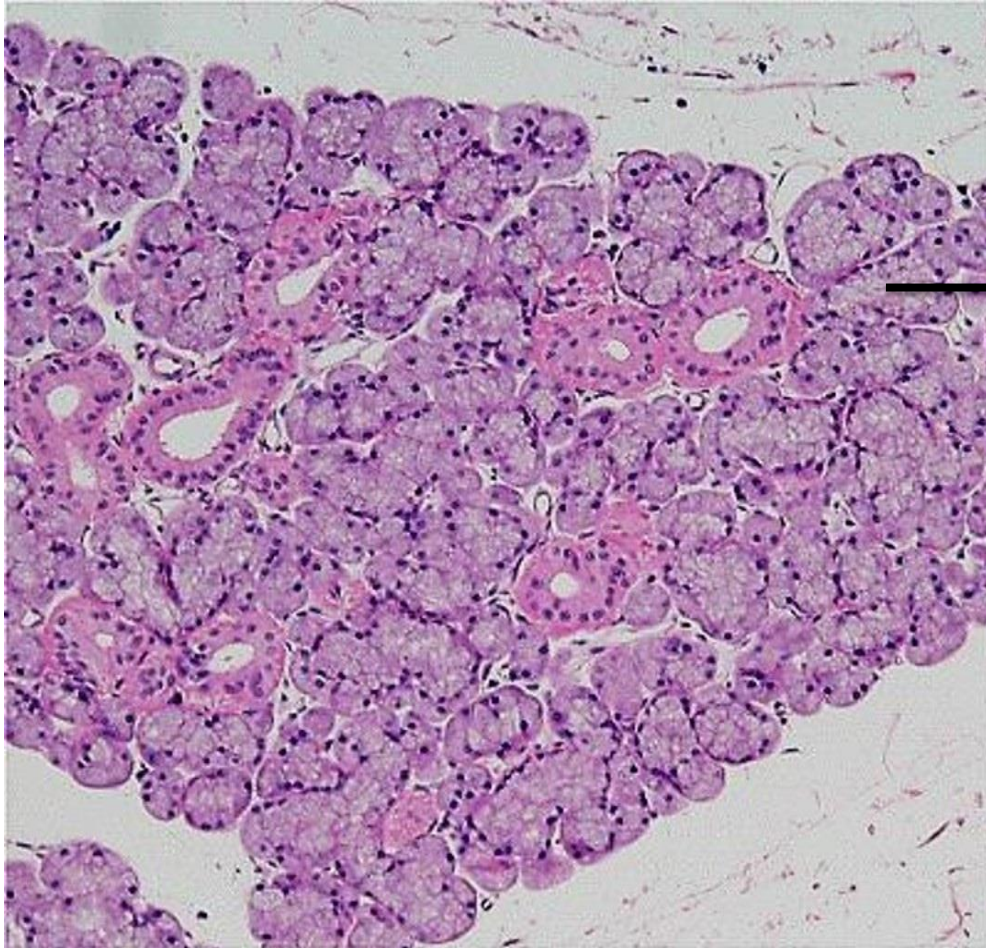
Submandibular gland



Sublingual gland



serous
demilunes



Sublingual(mainly mucous)

mucous acinus

