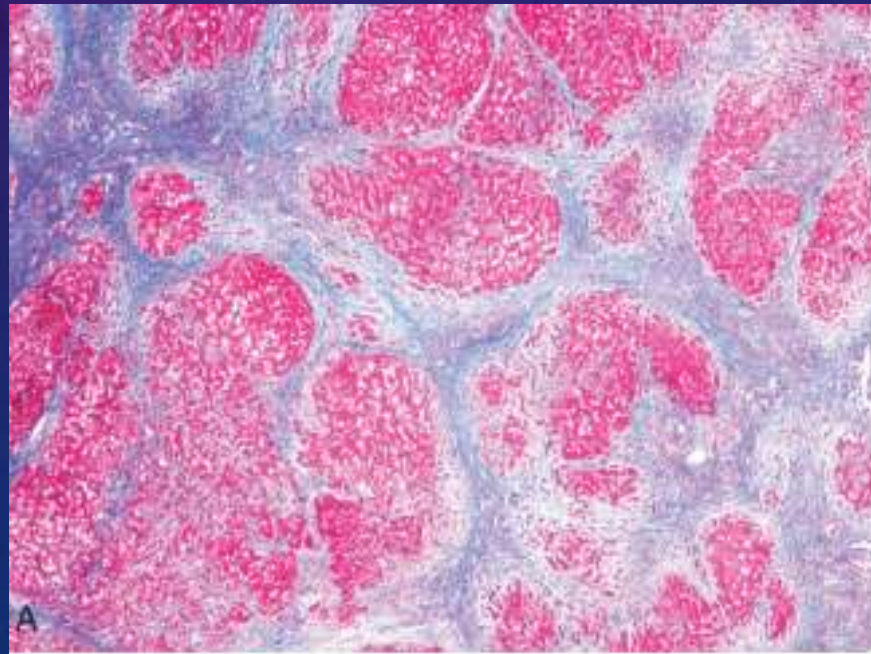
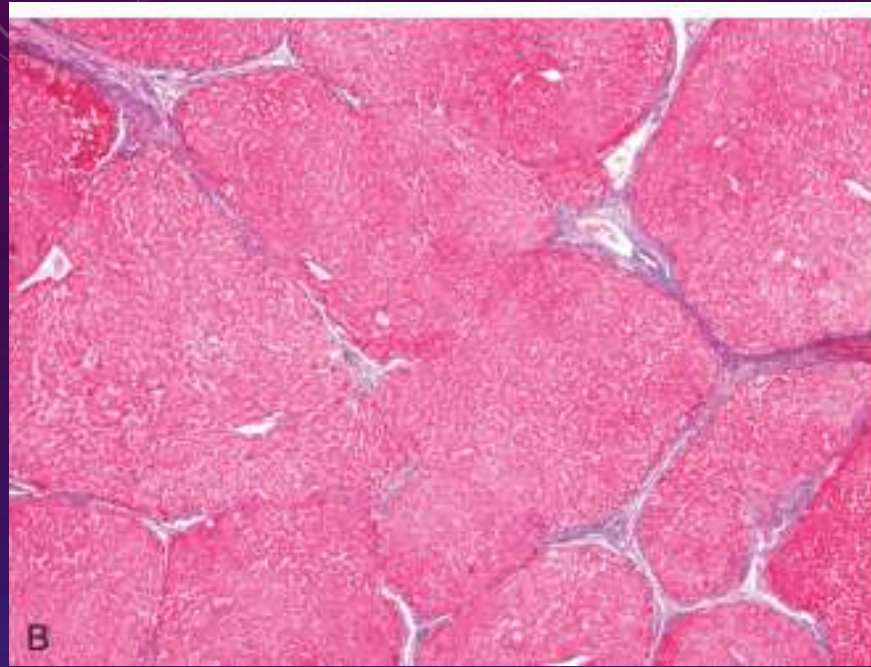


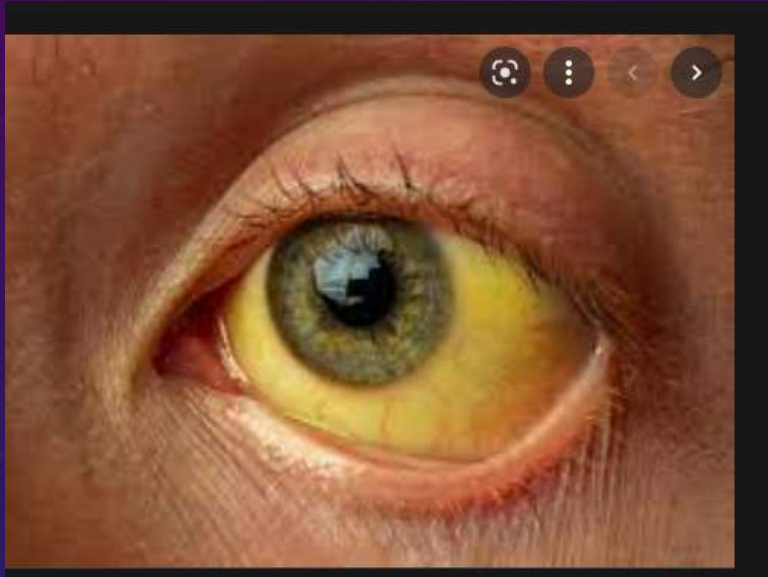


# GIT LAB-4





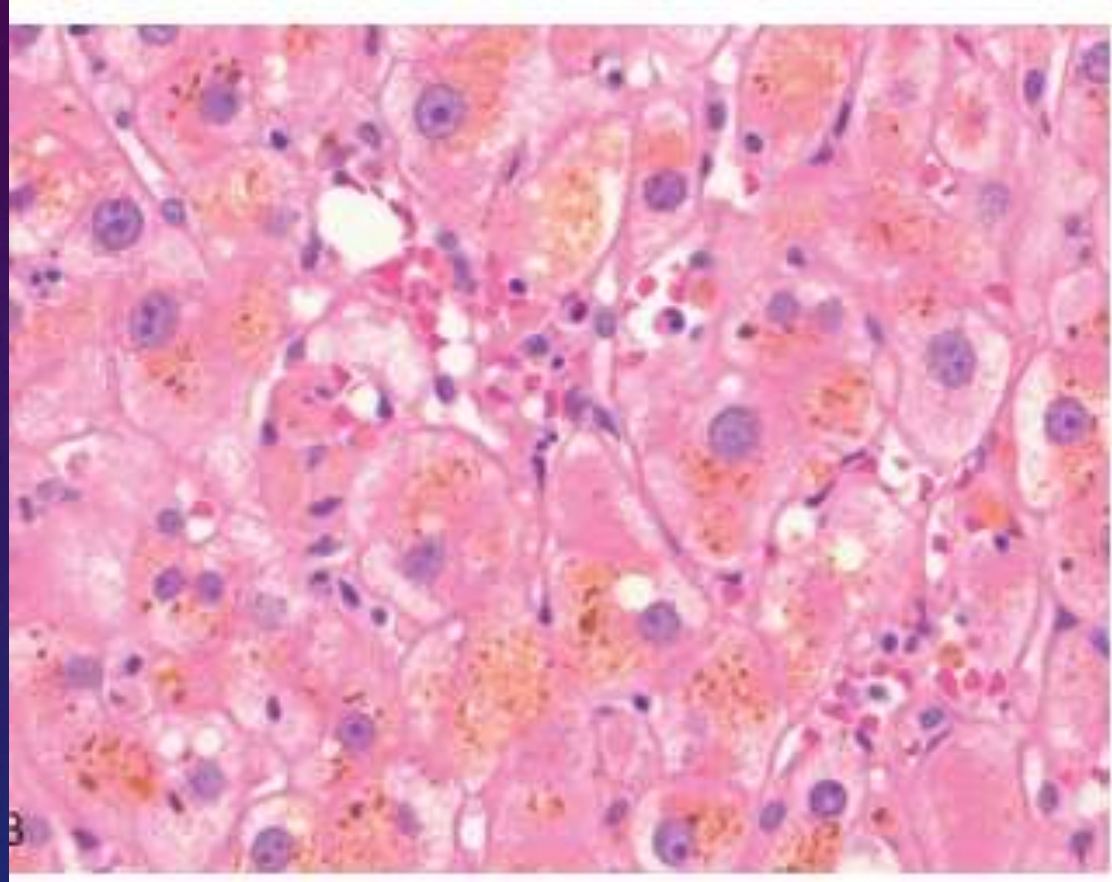




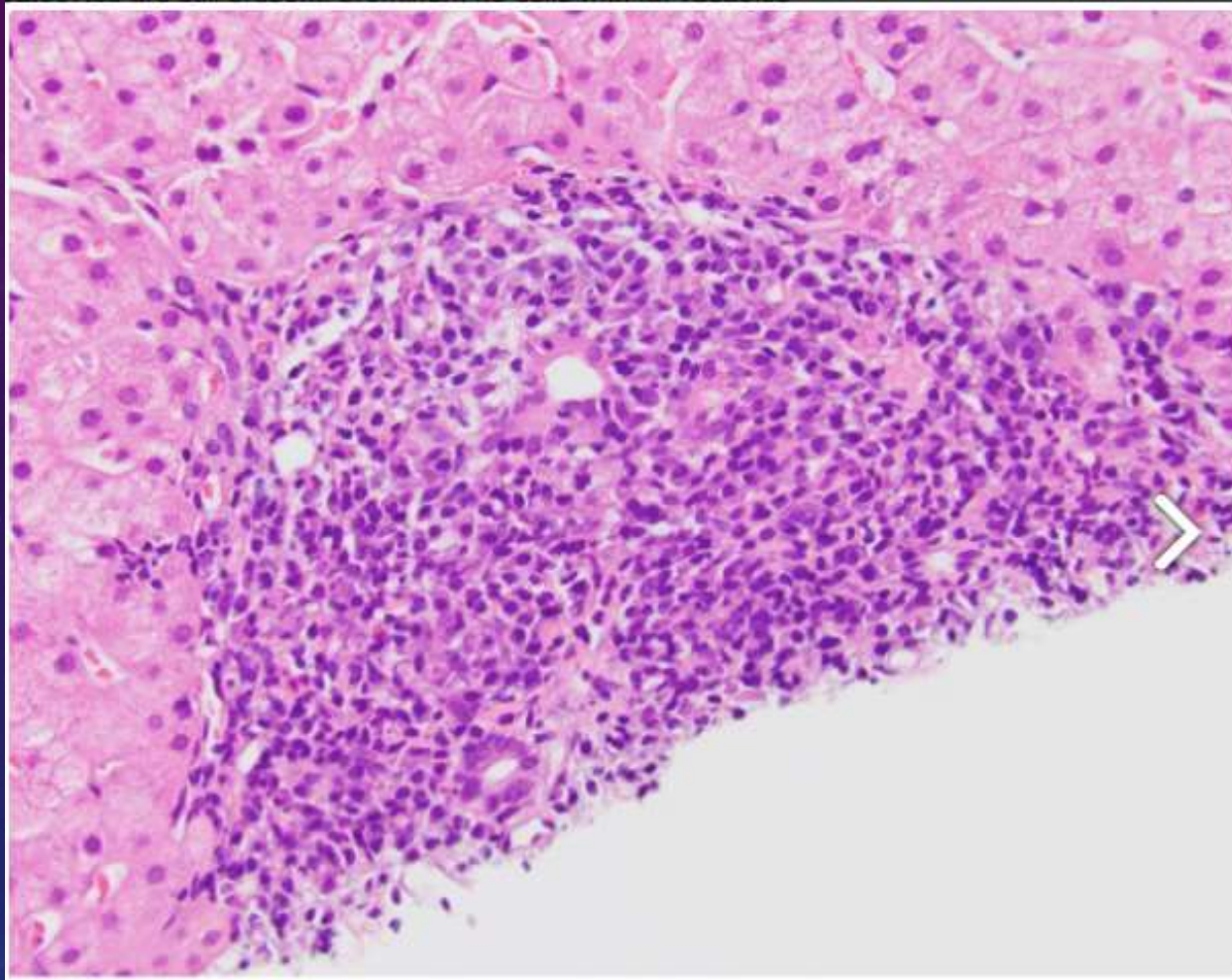




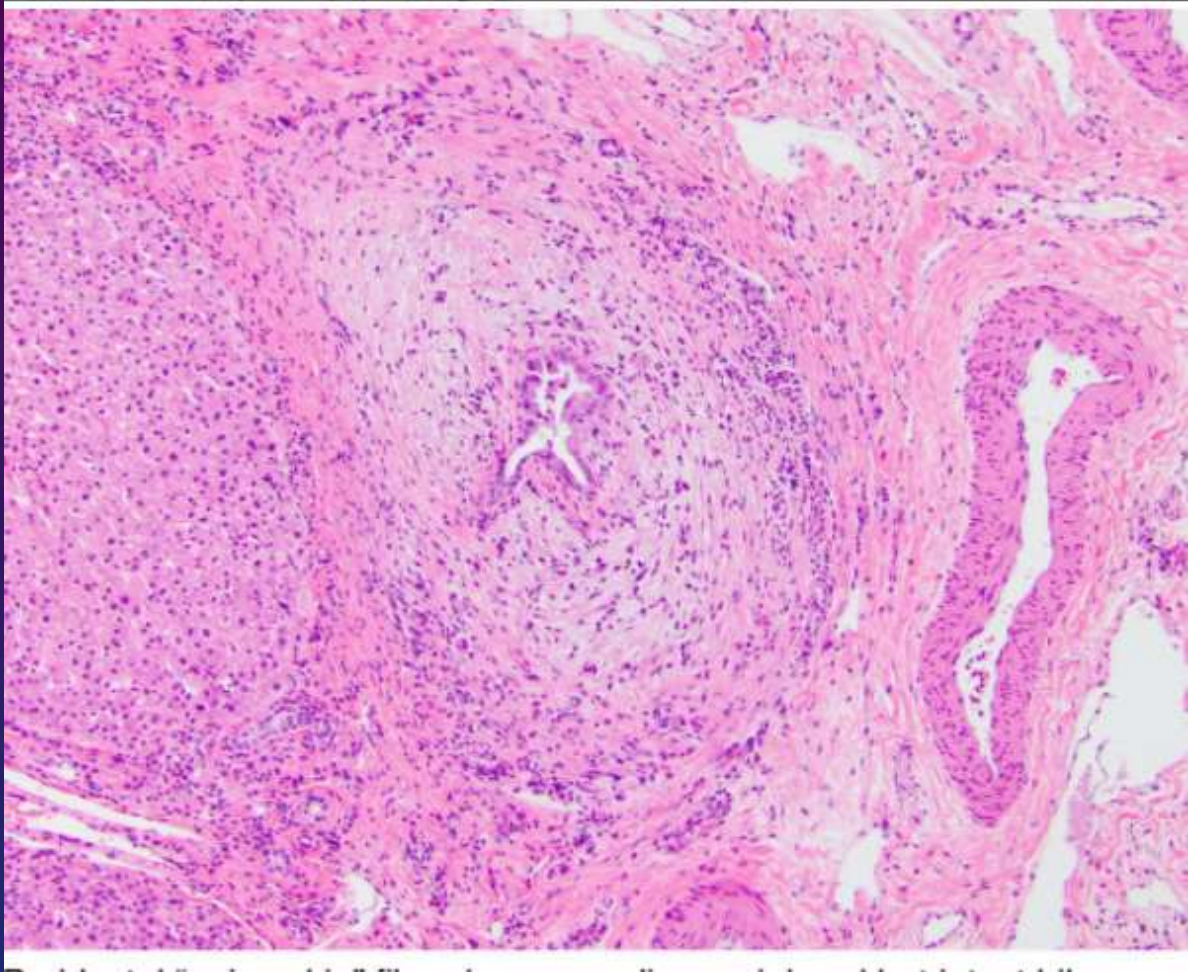




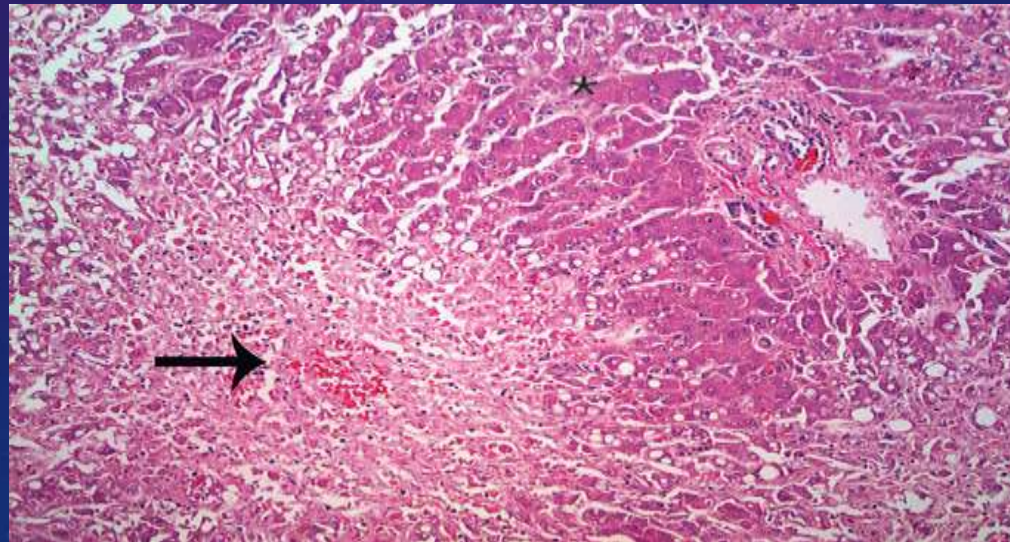
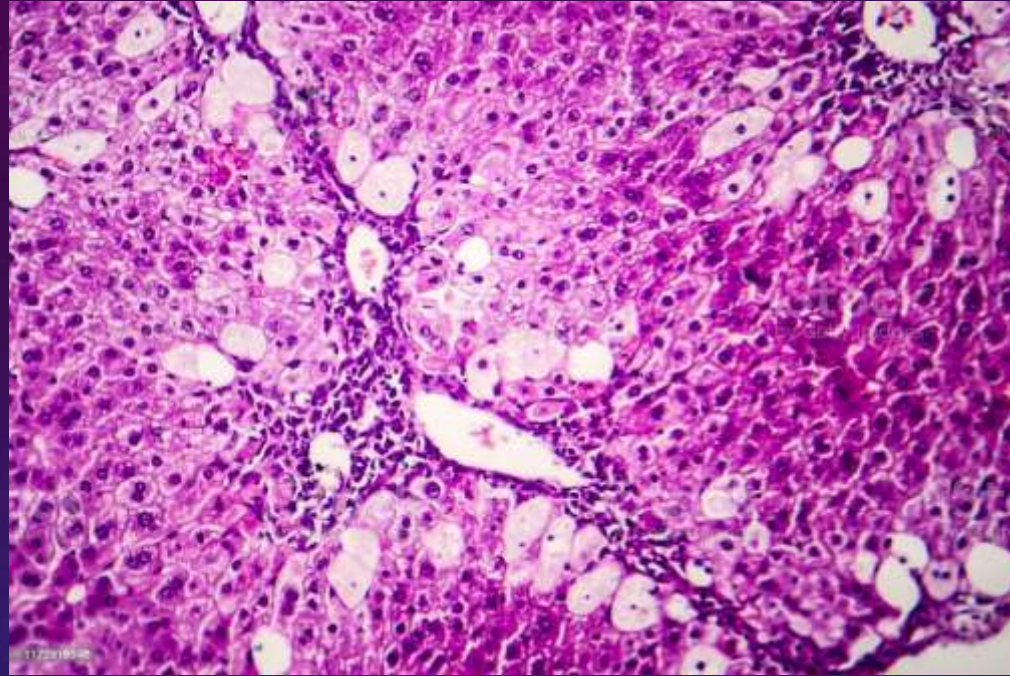




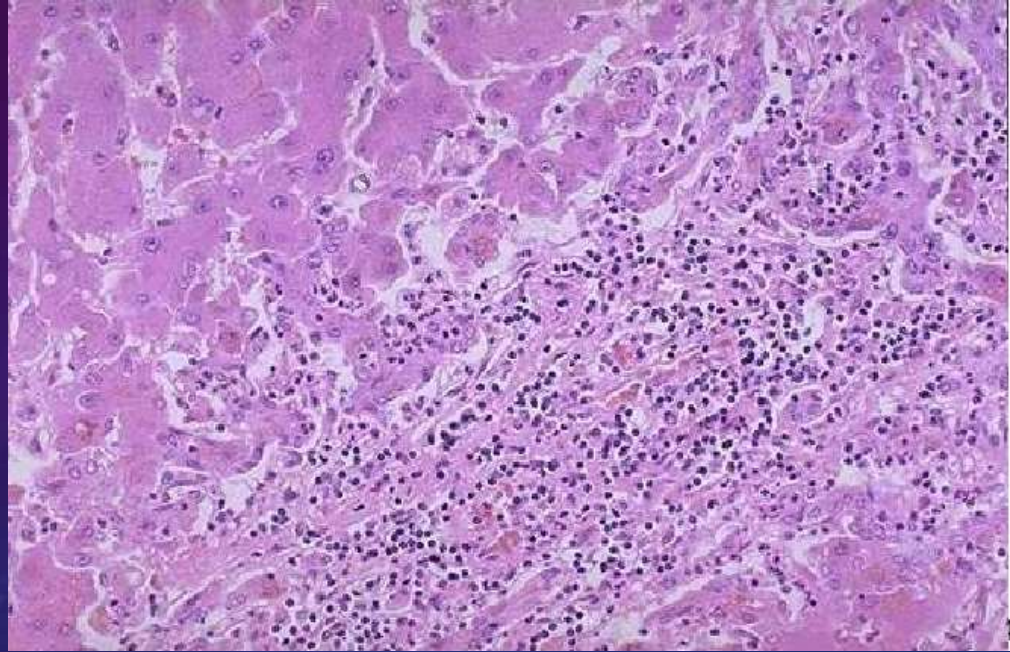


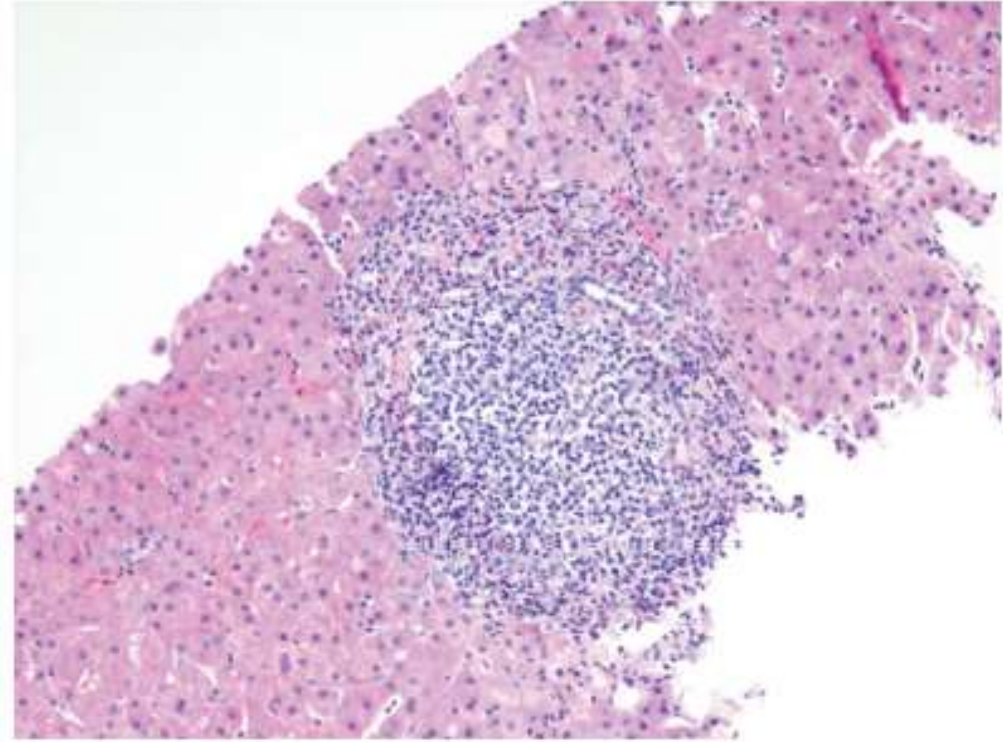




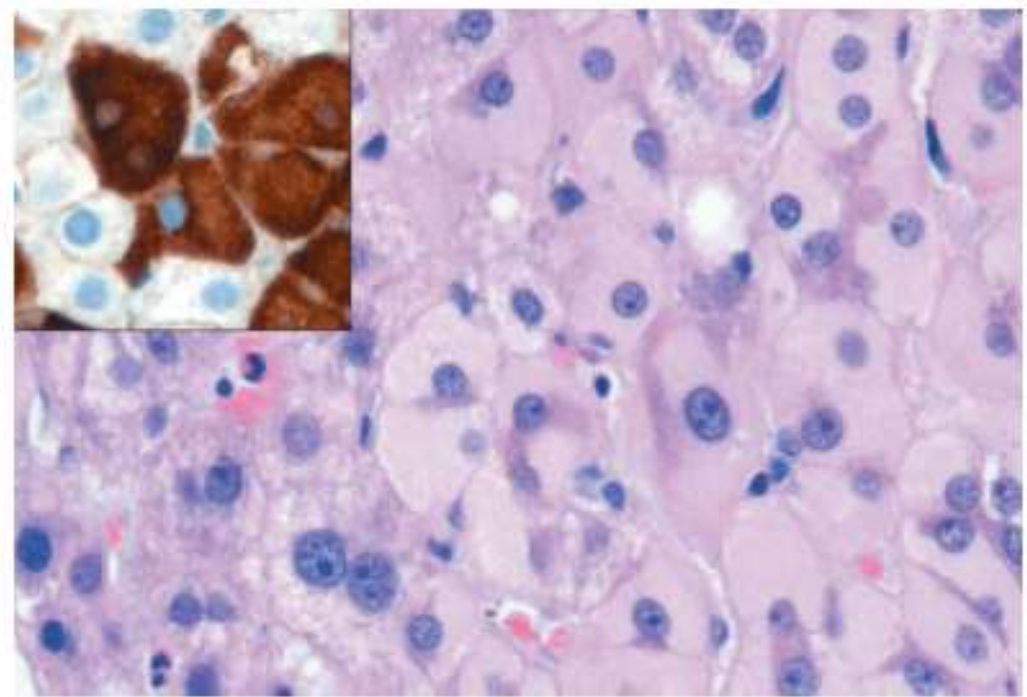








**Fig. 16.15** Chronic viral hepatitis due to HCV, showing characteristic portal tract expansion by a dense lymphoid infiltrate.



**Fig. 16.14** Ground-glass hepatocytes in chronic hepatitis B, caused by accumulation of hepatitis B surface antigen. Hematoxylin-eosin staining shows the presence of abundant, finely granular pink cytoplasmic inclusions; immunostaining (*inset*) with a specific antibody confirms the presence of surface antigen (*brown*).



