

[dr\\_youssefhussein@yahoo.com](mailto:dr_youssefhussein@yahoo.com)

# Trachea

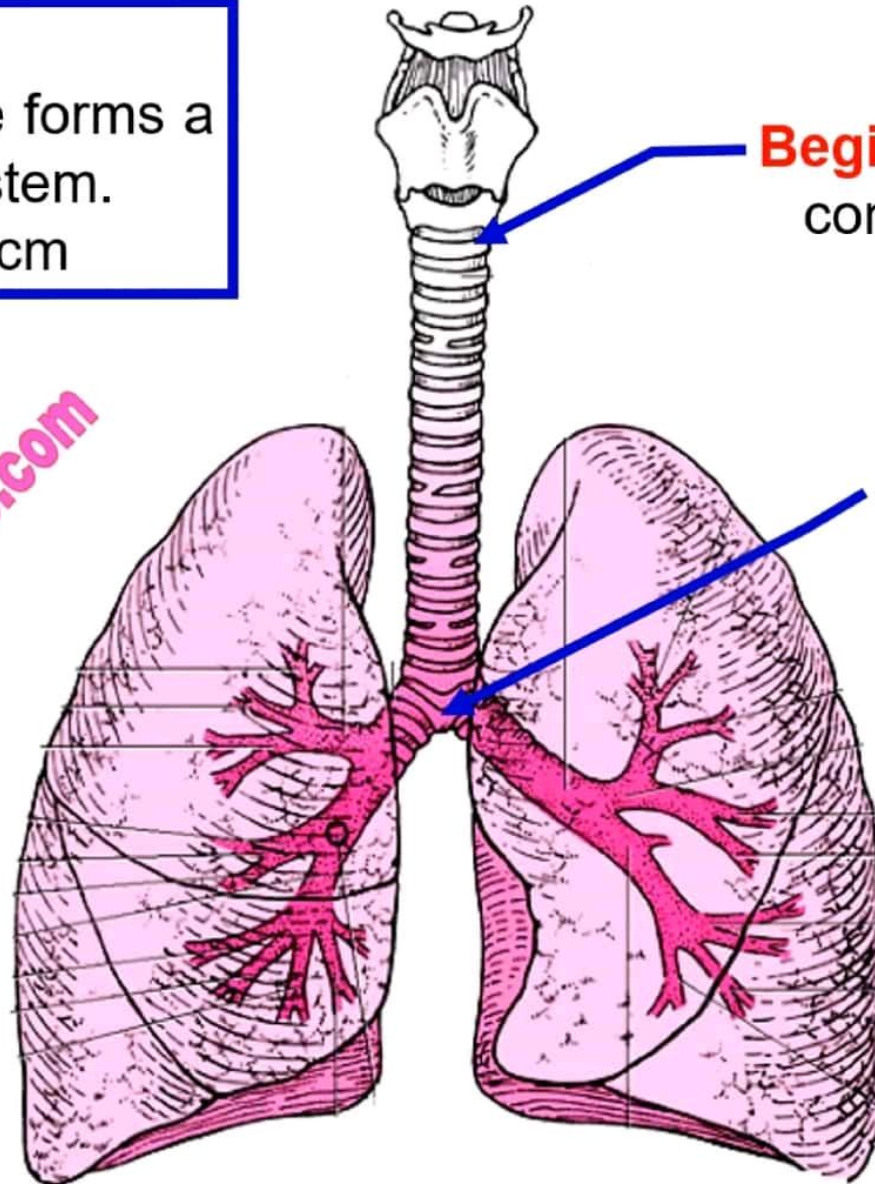
[dr\\_youssefhussein@yahoo.com](mailto:dr_youssefhussein@yahoo.com)

## Trachea

- It is a cartilaginous tube forms a part of the respiratory system.

\*\* **Length; 10 to 15 cm**

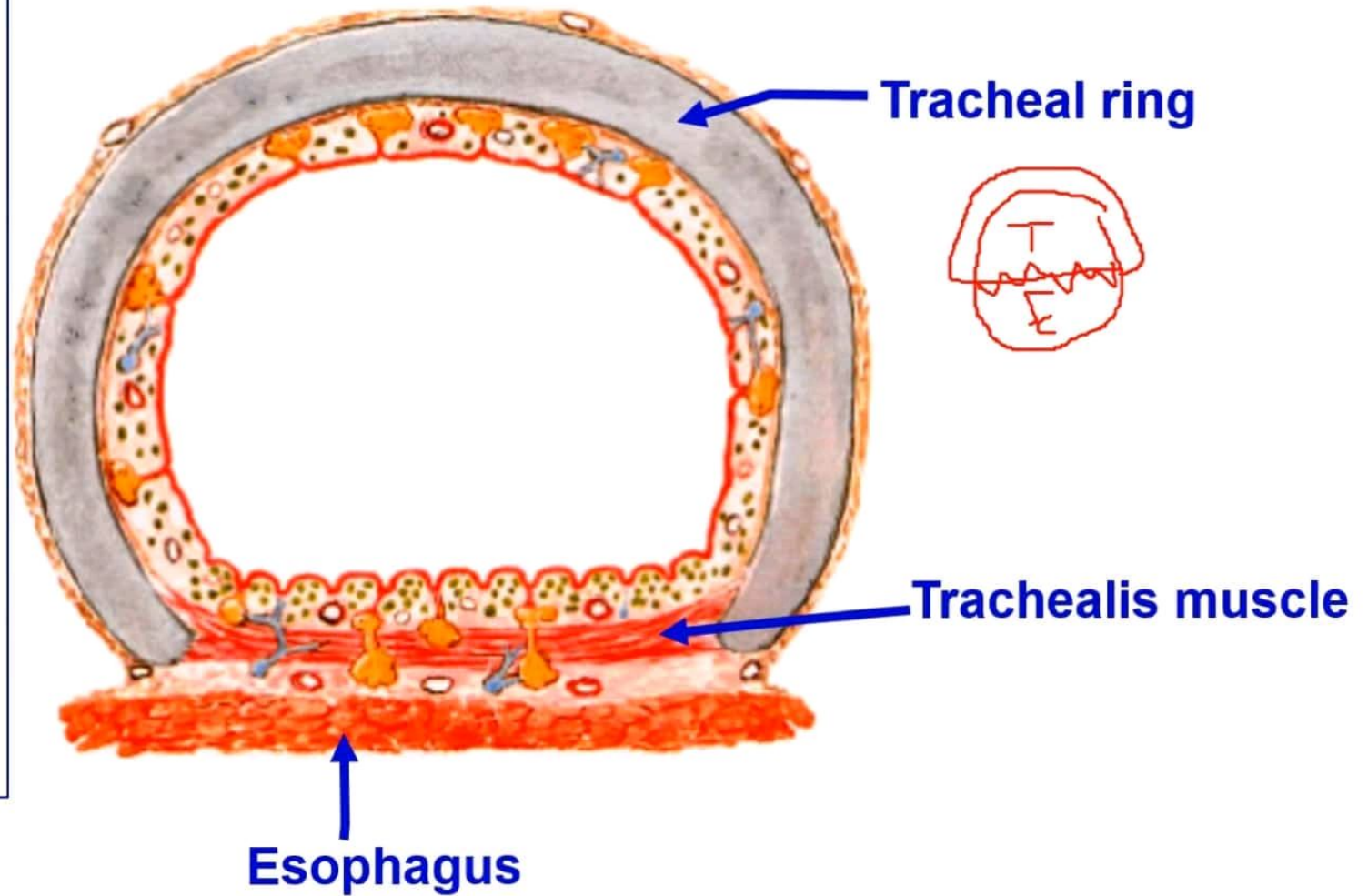
[dr\\_youssefhussein@yahoo.com](mailto:dr_youssefhussein@yahoo.com)



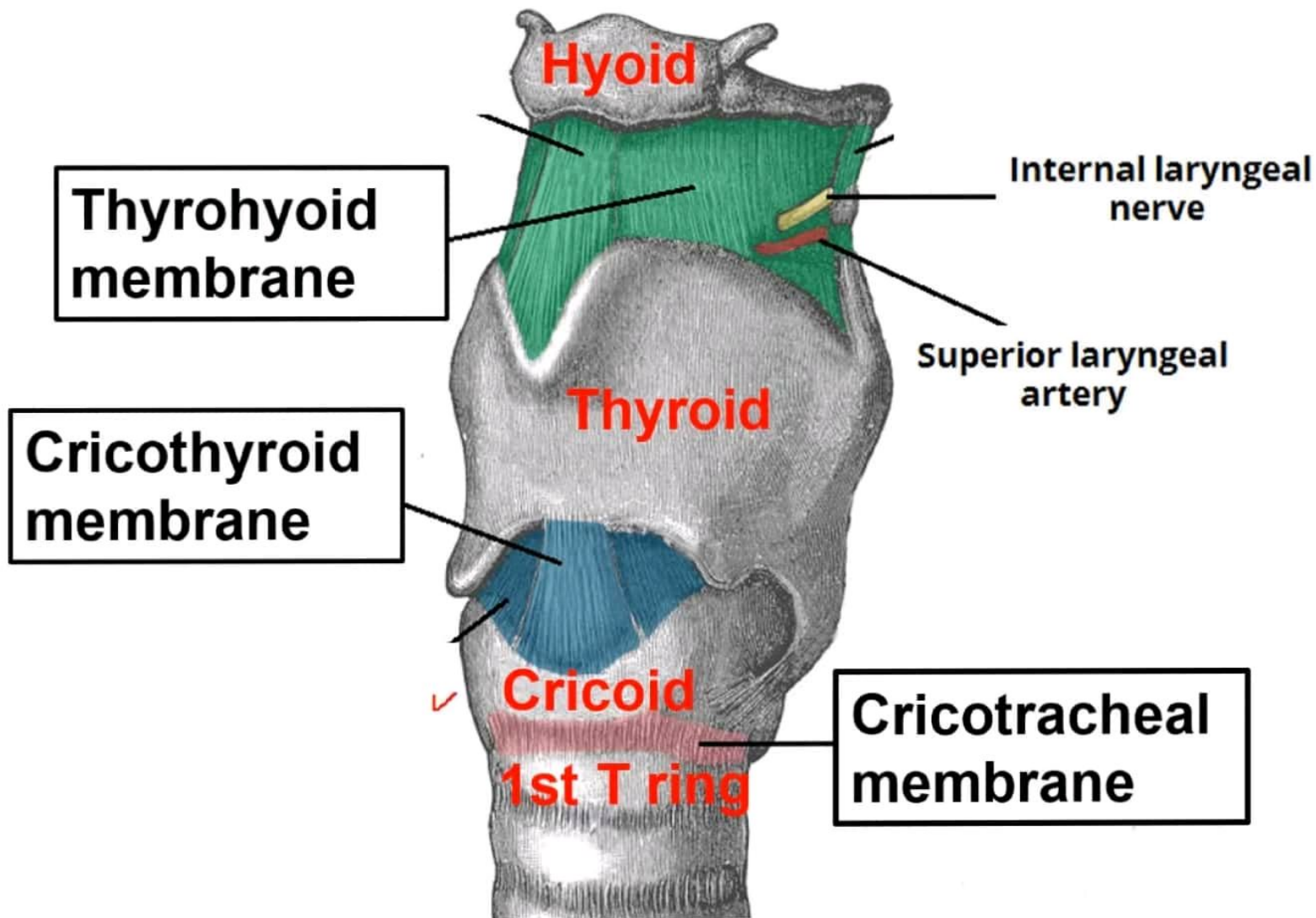
**Begin** at the level of C6 as a continuation of the larynx

**End** in thorax slightly to the **right of the median plane** at level of sternal angle (lower border of T4) by dividing into right and left bronchi

- It is formed of **18-20 C-shaped** cartilaginous rings.
- The concavity of the ring directed posteriorly and completed by a plain muscle (**trachealis**) and fibro-elastic tissue that allow dilatation of the esophagus during deglutition.

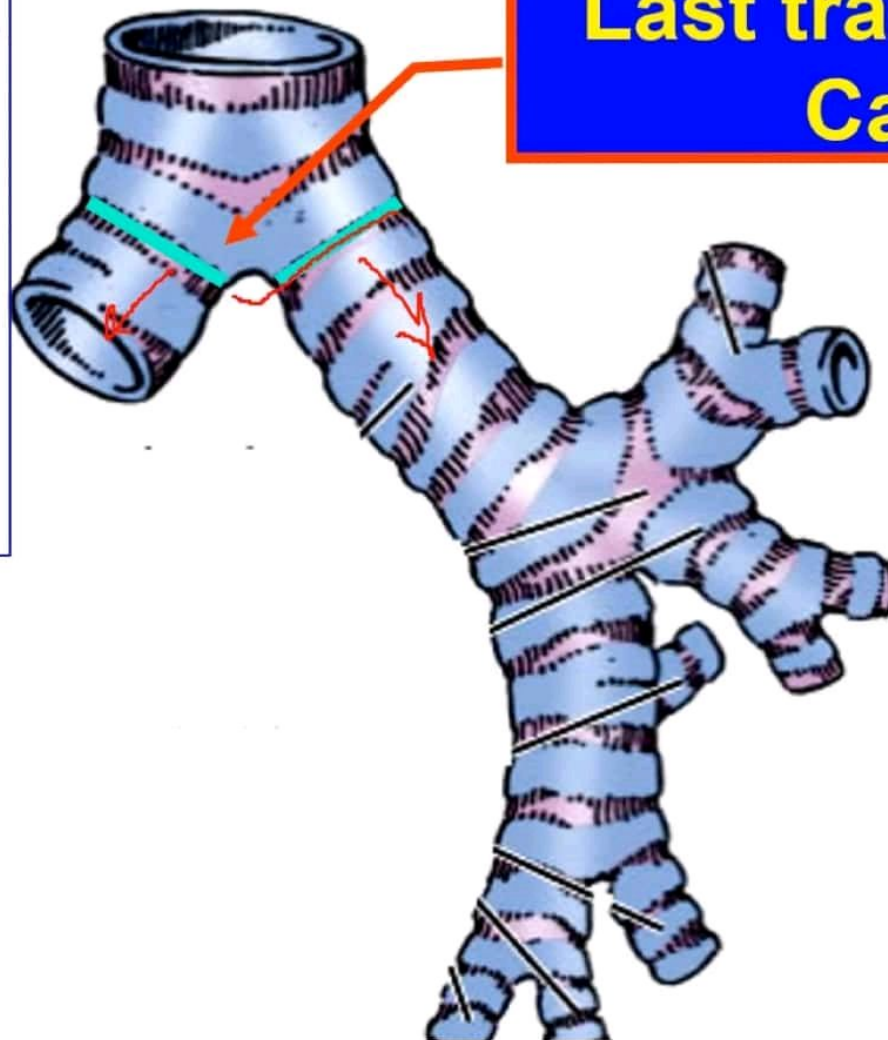


[dr\\_youssefhussein@yahoo.com](mailto:dr_youssefhussein@yahoo.com)



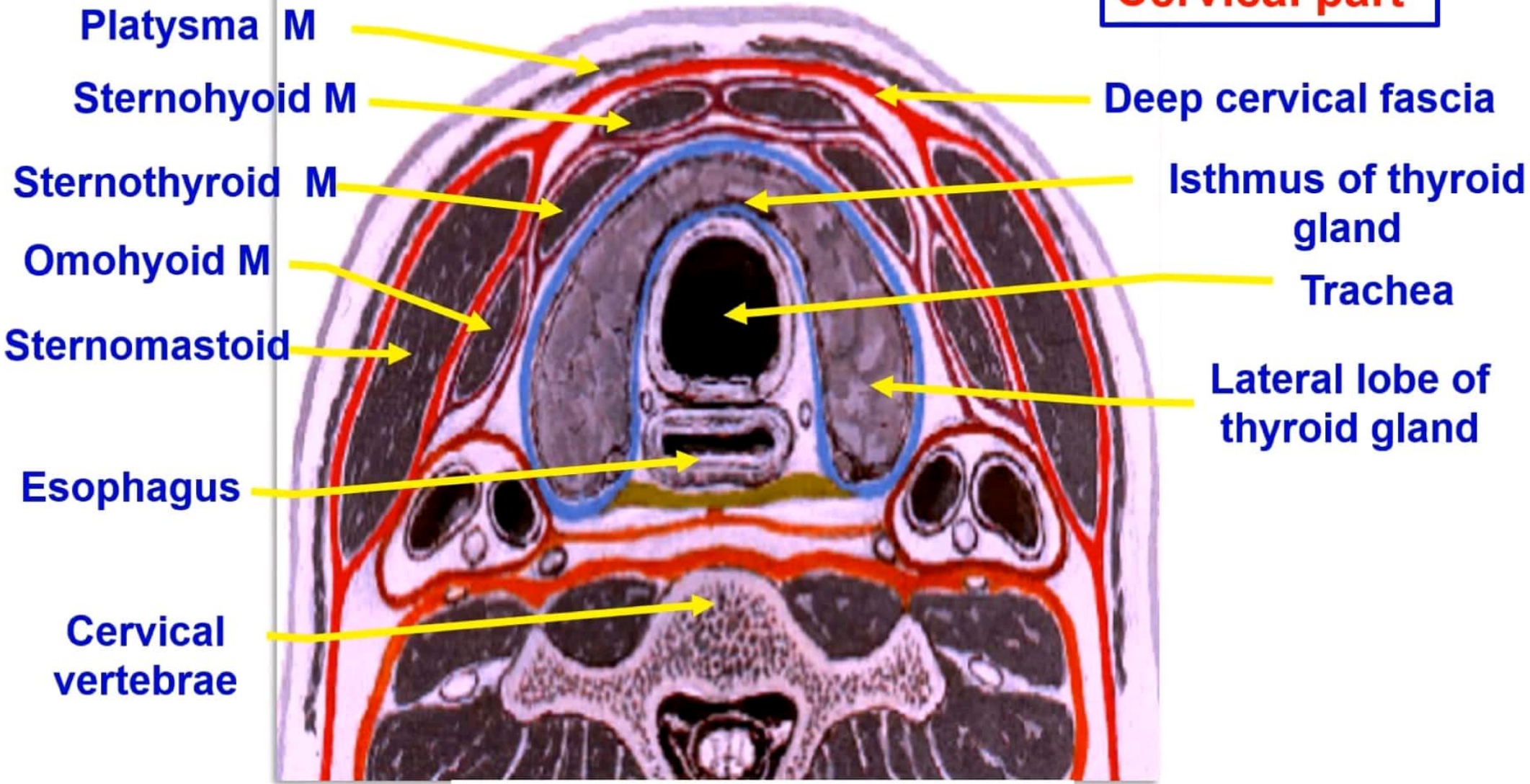
[dr\\_youssefhusseini@yahoo.com](mailto:dr_youssefhusseini@yahoo.com)

- **Trachea** is slightly deviated to the **right of the median** plane
- The **lower tracheal ring** has a keel like extension known as **Carina**.



[dr\\_youssefhusseini@yahoo.com](mailto:dr_youssefhusseini@yahoo.com)

**Cervical part**



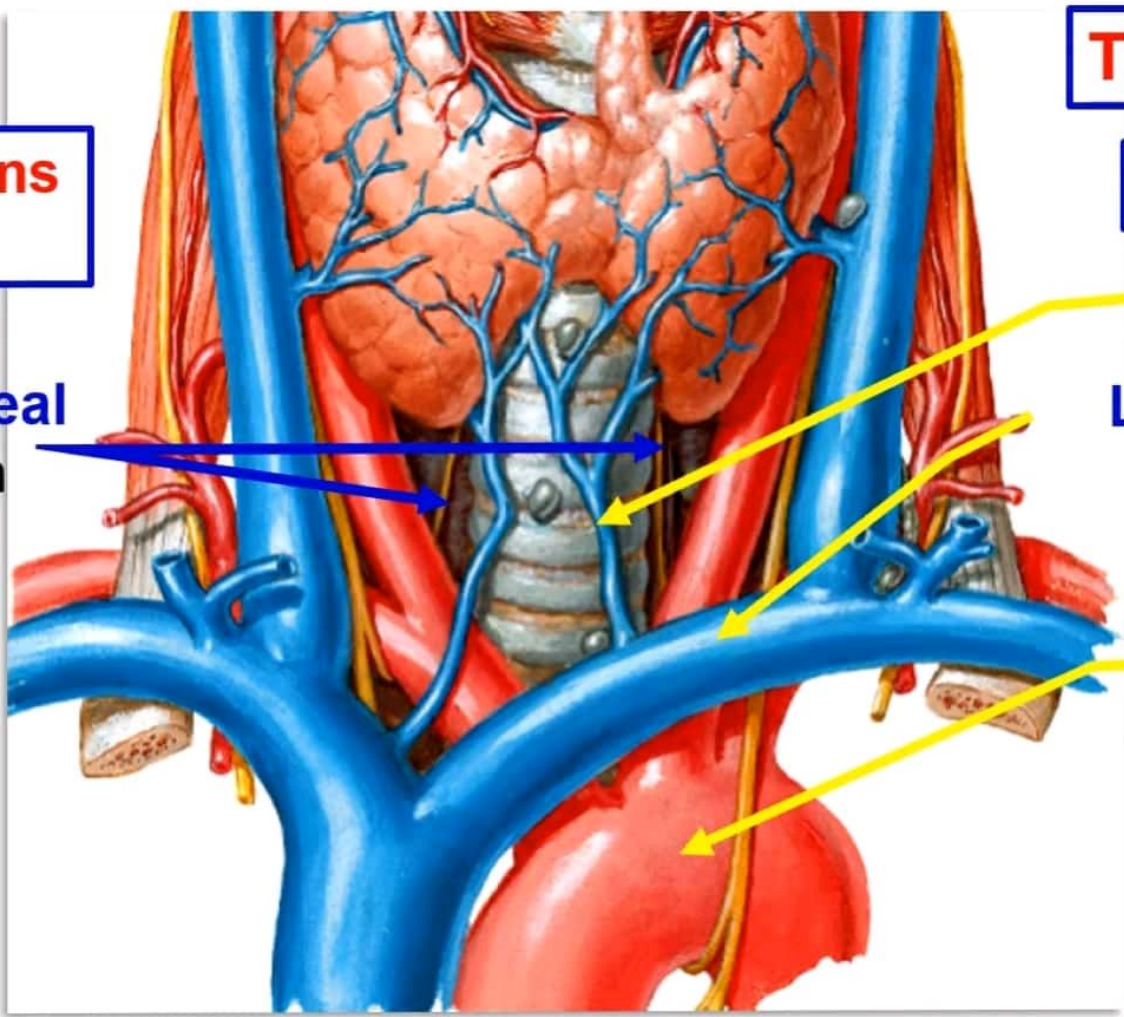
[dr\\_youssefhussein@yahoo.com](mailto:dr_youssefhussein@yahoo.com)

**Posterior relations  
- Esophagus**

**Thoracic part**

**Anterior relations**

**Recurrent laryngeal  
nerves** between  
trachea and  
esophagus



**Inferior thyroid vein**

**Left brachiocephalic  
vein**

**Arch of aorta**

[dr\\_youssefhussein@yahoo.com](mailto:dr_youssefhussein@yahoo.com)

**Right relations**

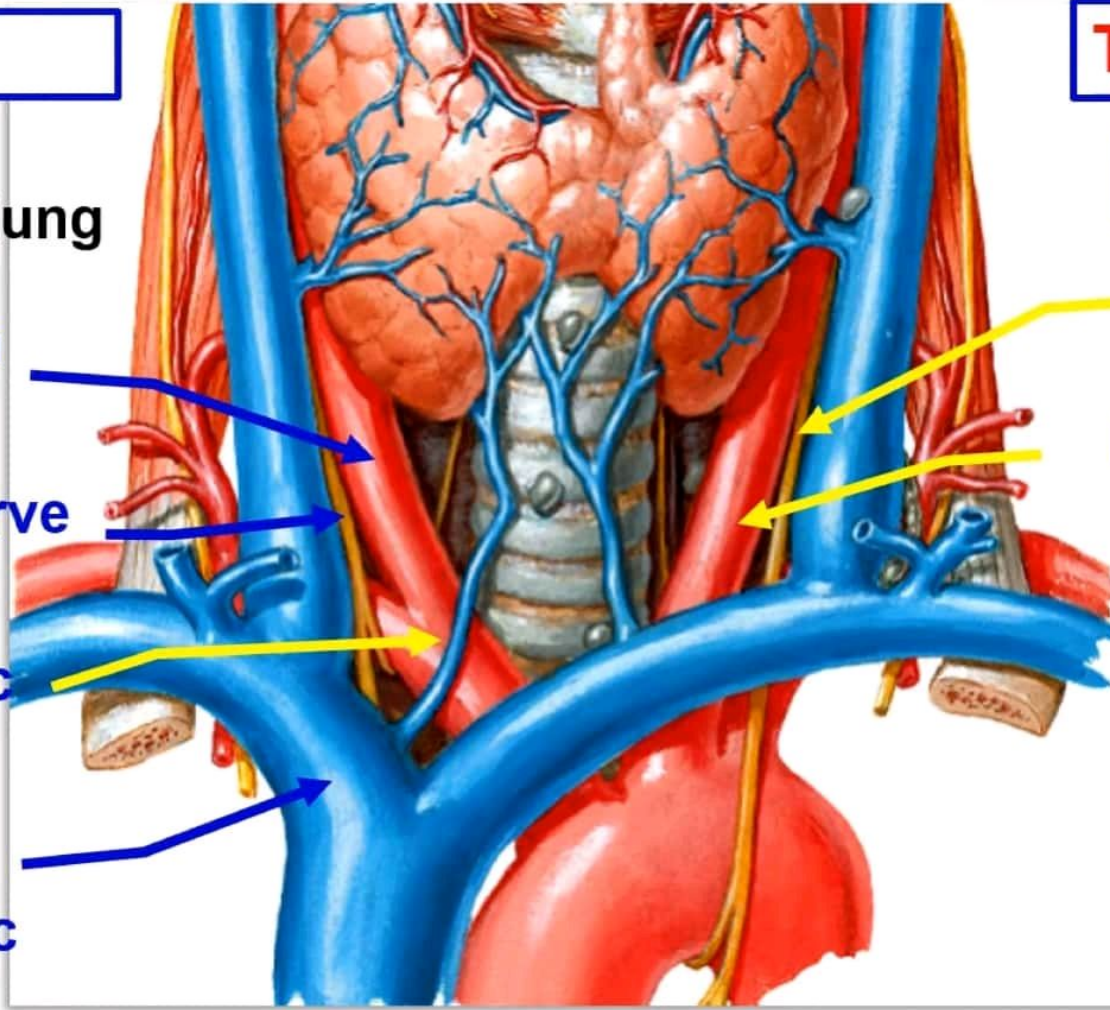
Right pleura and lung

Right common carotid artery

Right vagus nerve

Brachiocephalic trunk

Right Brachiocephalic vein



**Thoracic part**

**Left relations**

Left vagus nerve

Left common carotid artery

Left pleura and lung

[dr\\_youssefhussein@yahoo.com](mailto:dr_youssefhussein@yahoo.com)



**\*\* Blood Supply:-**

a- Cervical part by the inferior thyroid vessels.

b- The thoracic part by the bronchial vessels.

**\*\* Nerve supply,** Autonomic fibers from 2 vagi and 2 sympathetic chains.

**\*\* Lymph drainage:** pretracheal and paratracheal lymph nodes

**Tracheostomy**

- **Tube inserted in the trachea** midway between thyroid cartilage and sternal notch, approximate at the 2<sup>nd</sup> tracheal ring

[dr\\_youssefhusseini@yahoo.com](mailto:dr_youssefhusseini@yahoo.com)

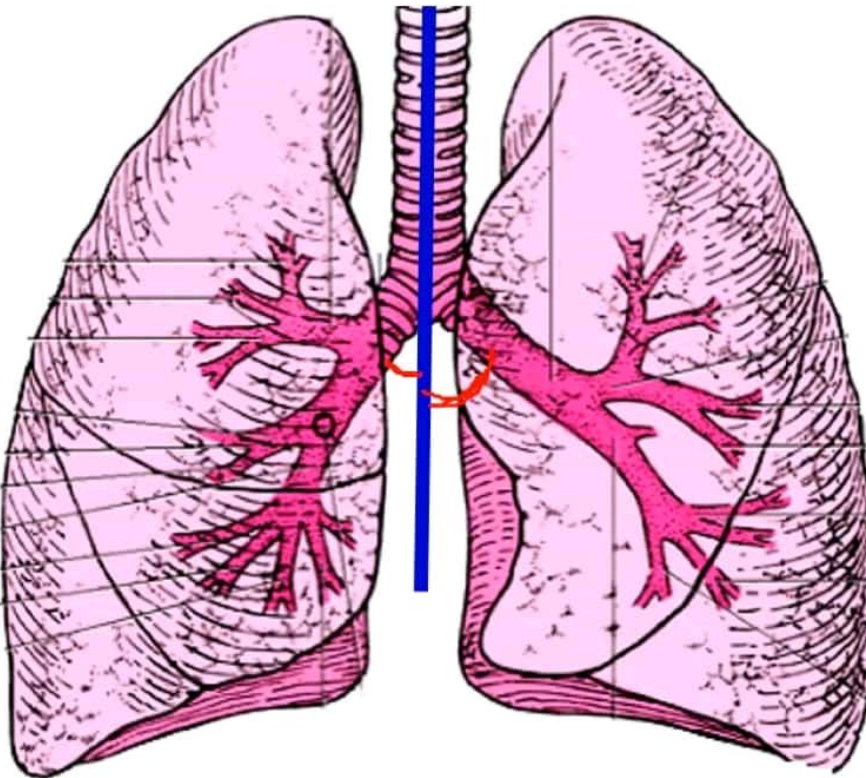
[dr\\_youssefhussein@yahoo.com](mailto:dr_youssefhussein@yahoo.com)



# Bronchi

[dr\\_youssefhussein@yahoo.com](mailto:dr_youssefhussein@yahoo.com)

	<b>Right Bronchus</b>	<b>Left Bronchus</b>
<b>Diameter</b>	Wide & short.	Narrow & long.
<b>Direction</b>	<p>- It is more <b>vertical</b> and form angle about <b>15 degree</b> with the trachea</p> <p>- <b>SO</b>, the foreign bodies and aspirated material pass to the right lung</p>	<p>- more <b>oblique</b> and form angle about <b>45 degree</b> with the trachea.</p>



[dr\\_youssefhussein@yahoo.com](mailto:dr_youssefhussein@yahoo.com)

• Segmental Branches of Right Bronchus

Apical segmental bronchus

Anterior

Posterior

Lateral

Medial

Apical

Lateral basal

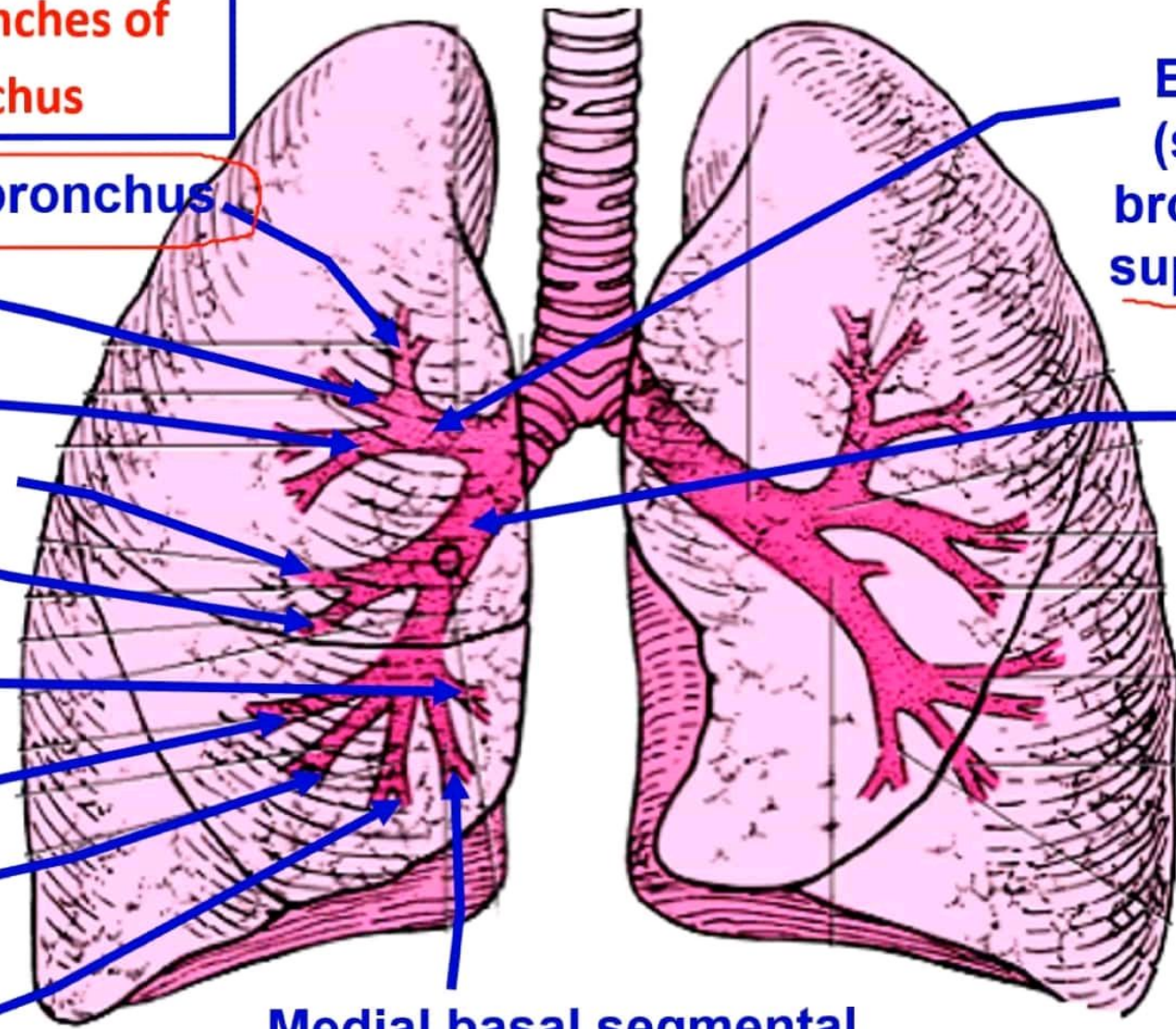
Anterior basal

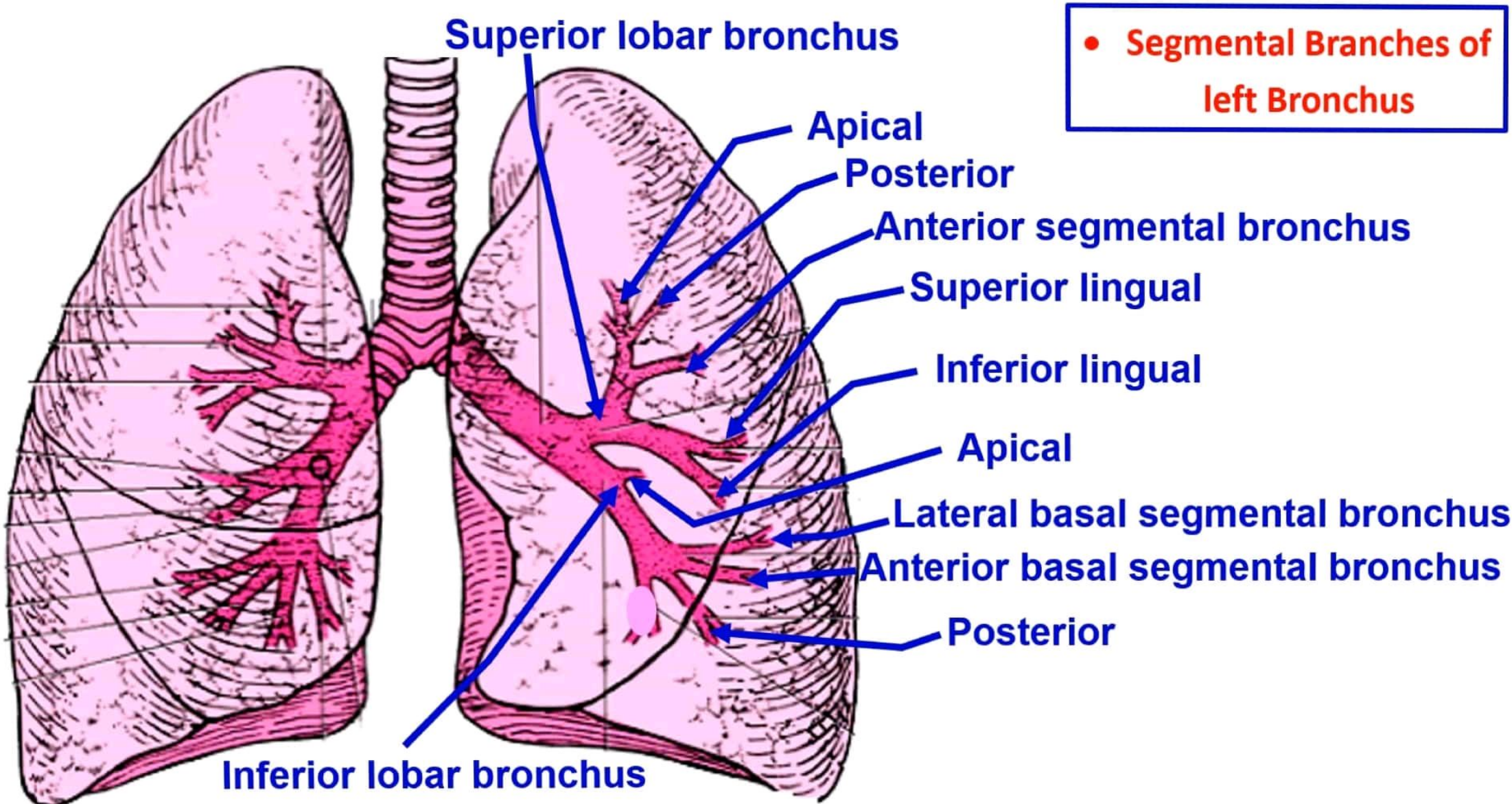
Posterior basal

Medial basal segmental bronchus

Eparterial (superior) bronchus for superior lobe

Hyparterial (inferior) bronchus for middle and inferior lobes





superior lobar bronchus divides into two branches upper and lower (lingual)