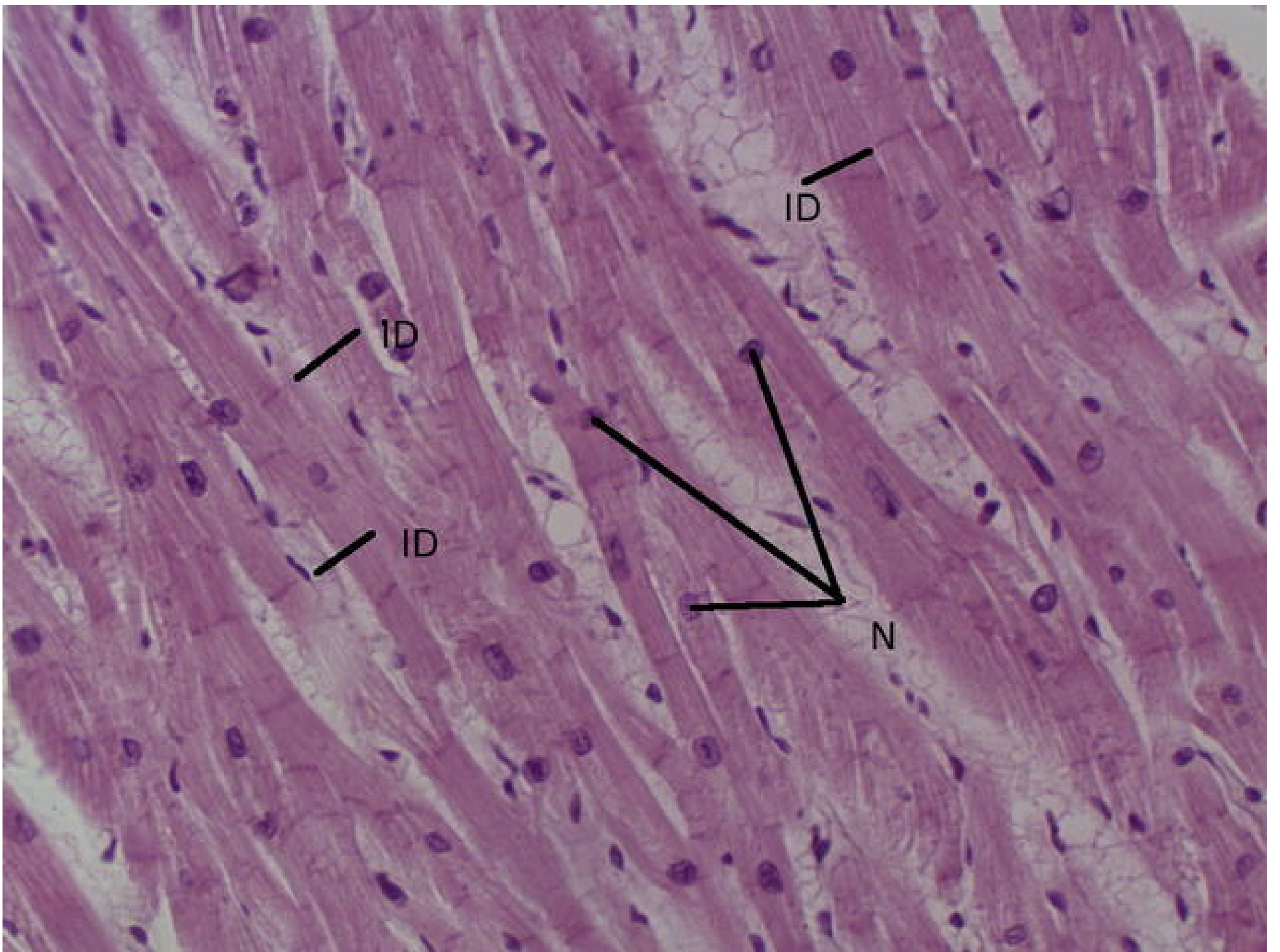


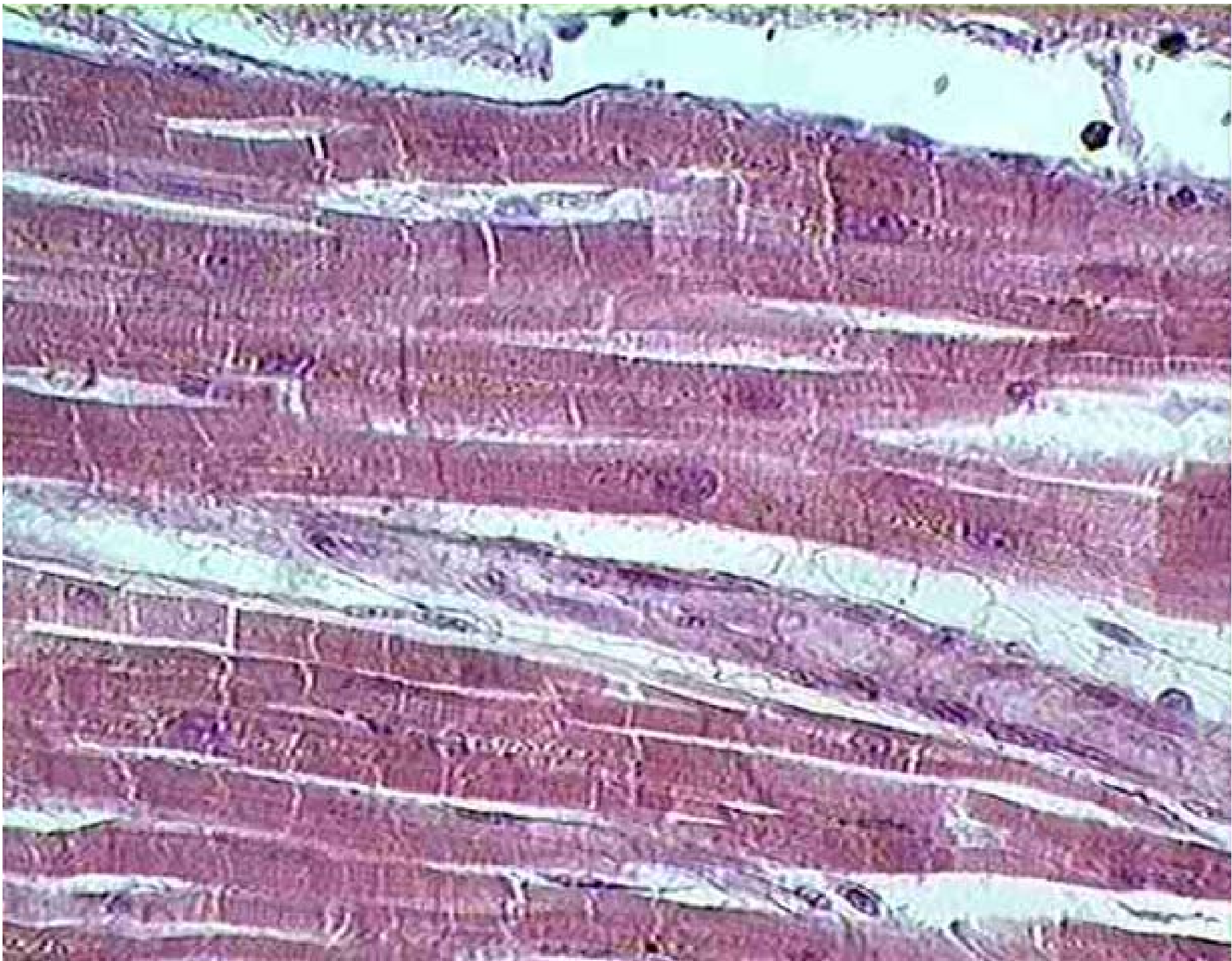
Nucleus

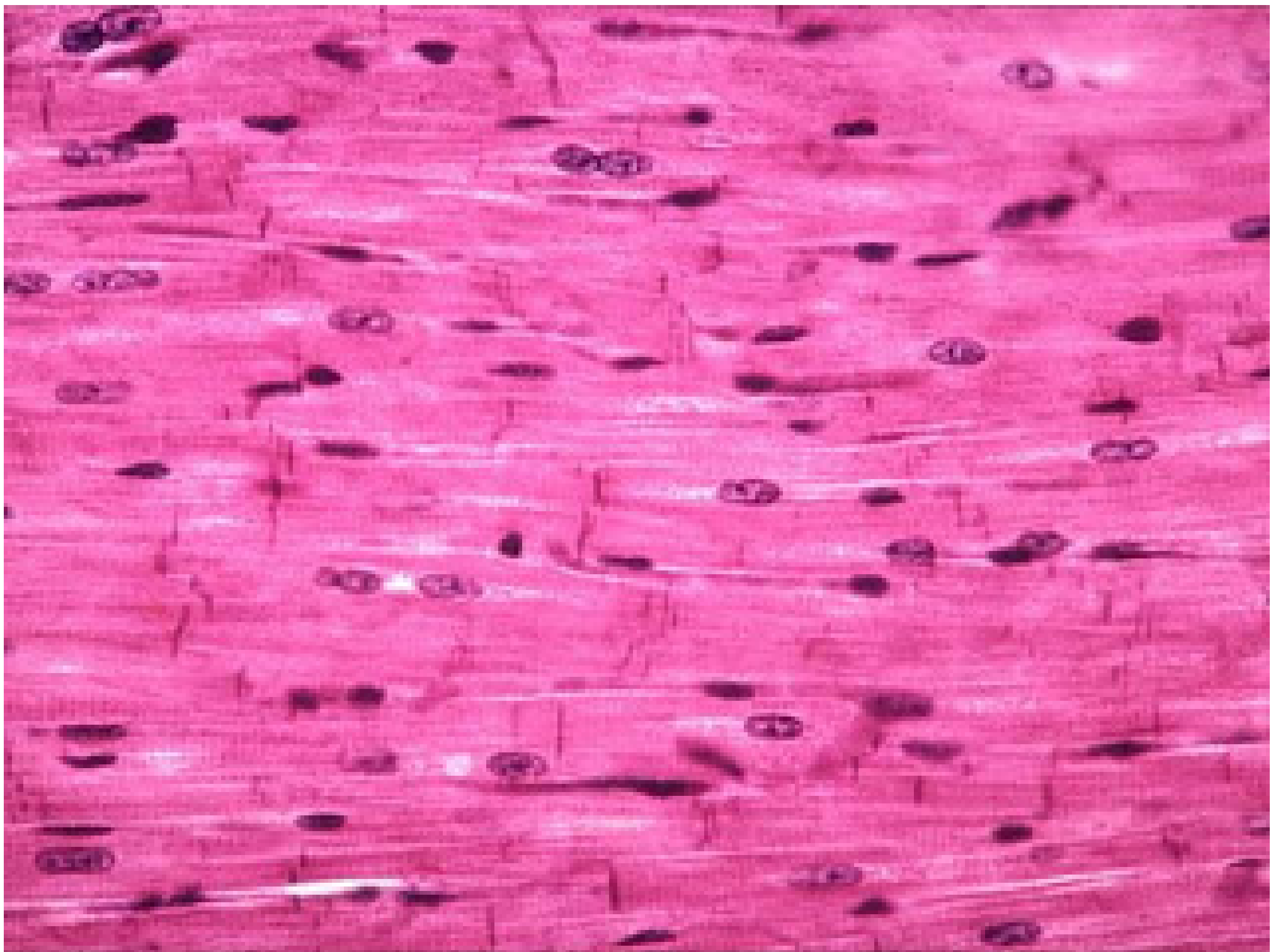


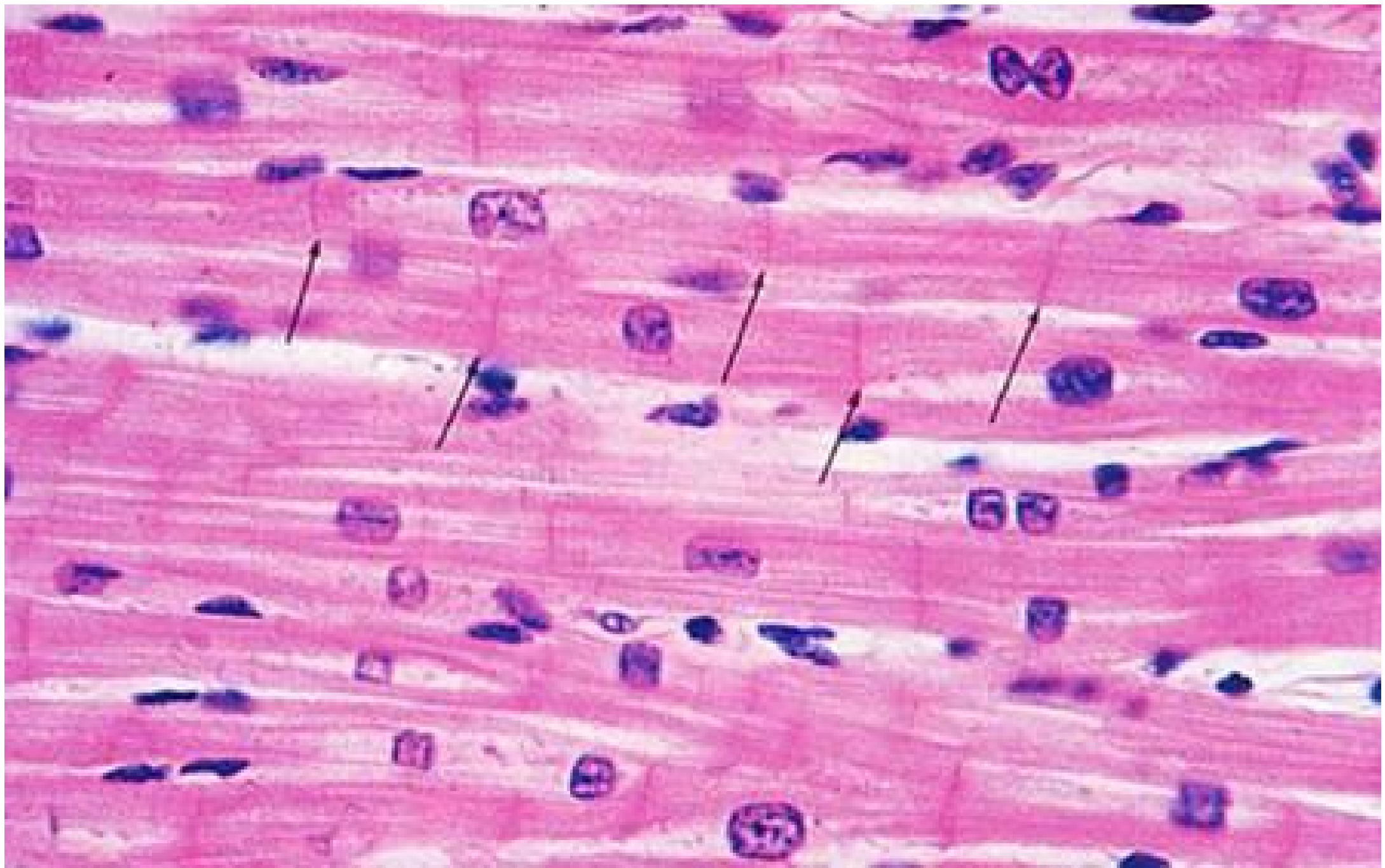
**intercalated
disk**



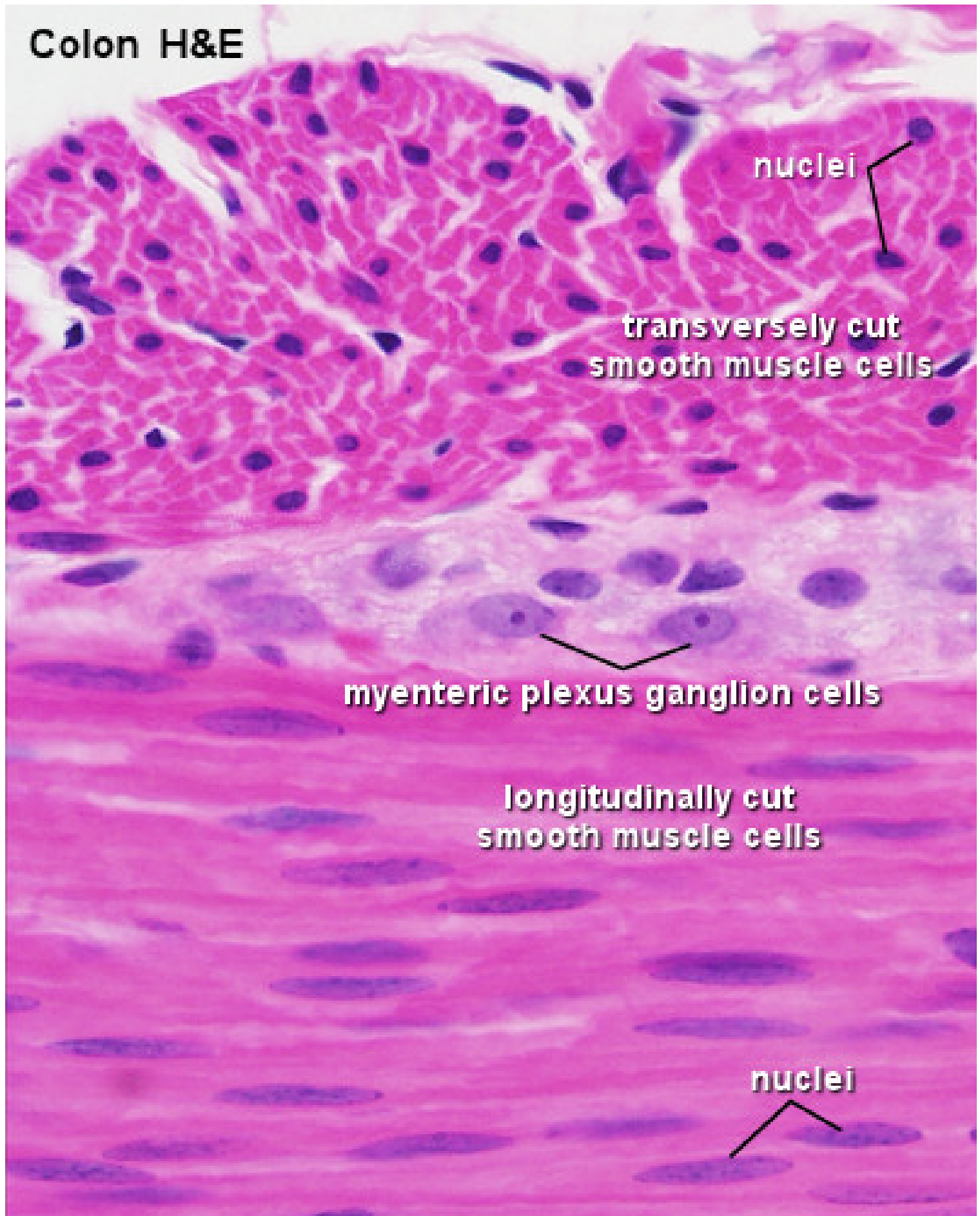








Colon H&E



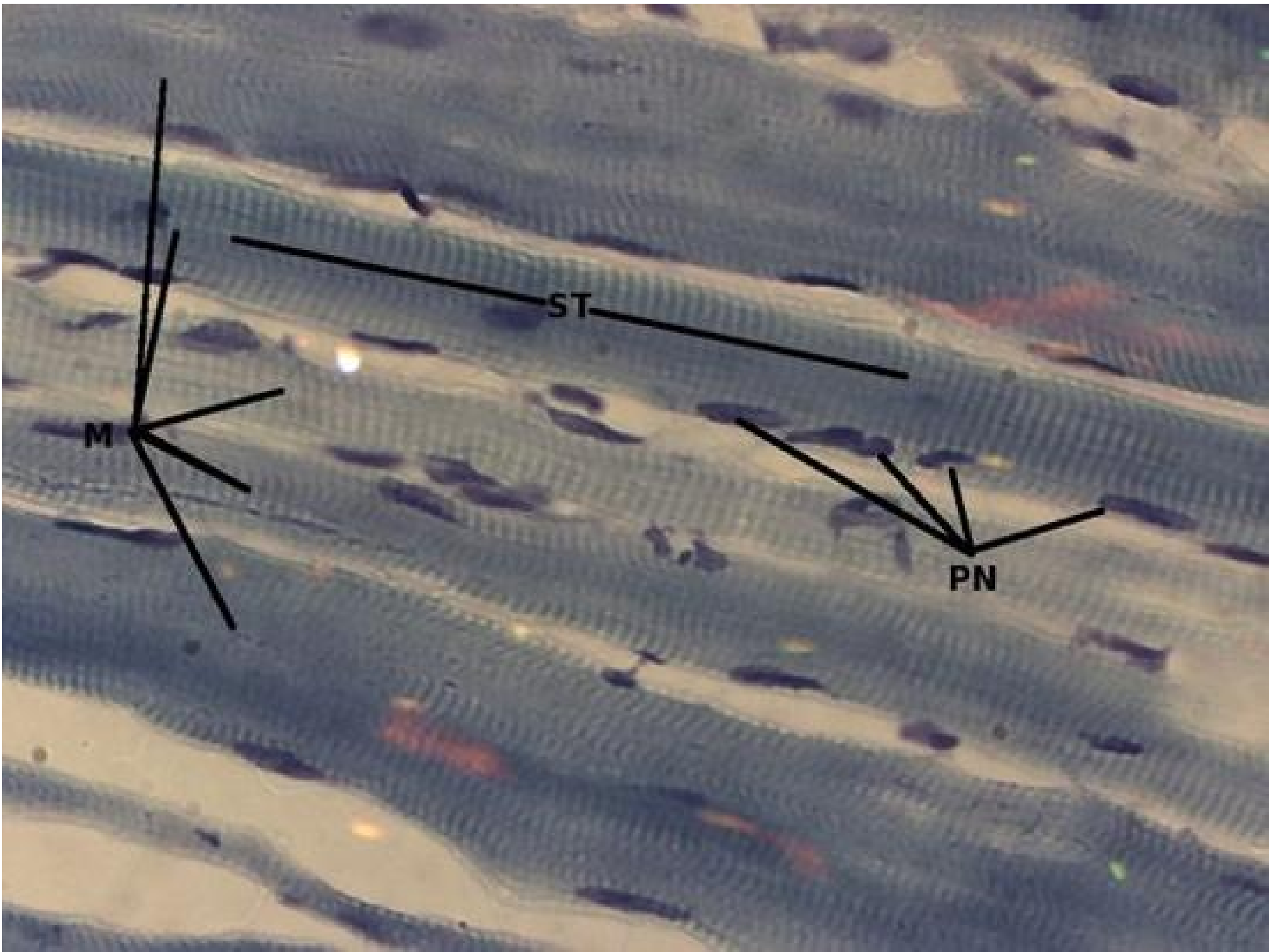
nuclei

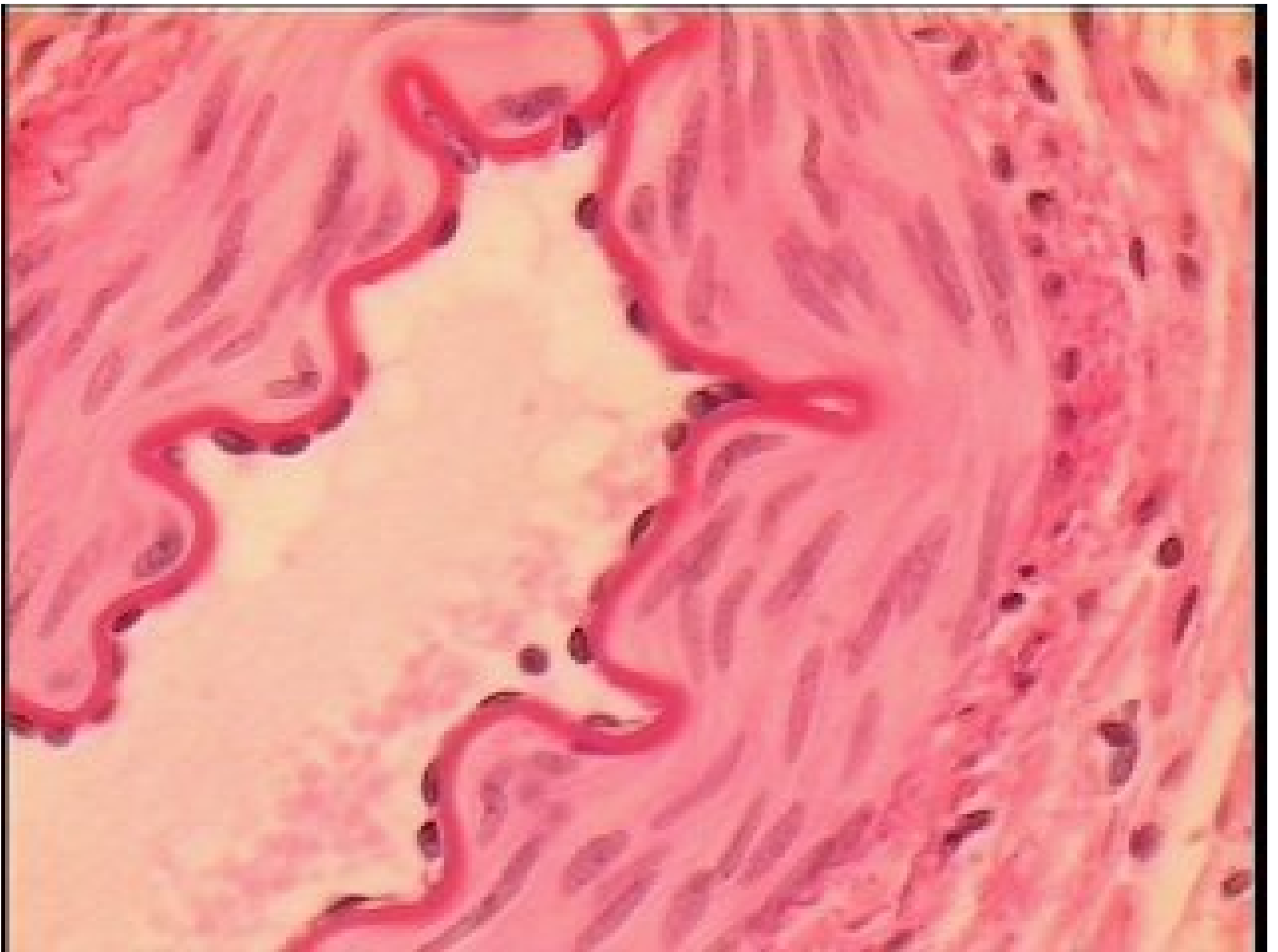
transversely cut
smooth muscle cells

myenteric plexus ganglion cells

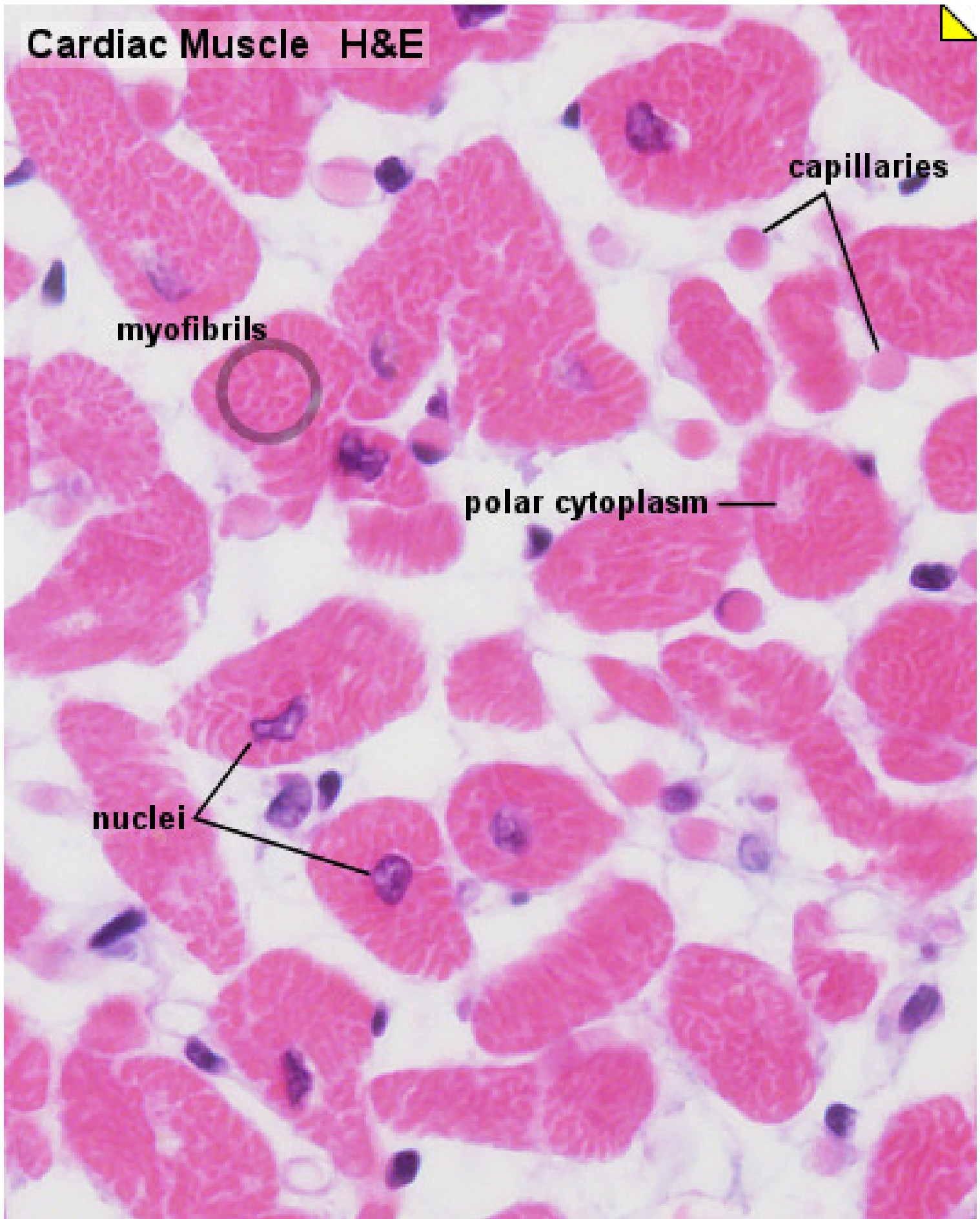
longitudinally cut
smooth muscle cells

nuclei





Cardiac Muscle H&E



myofibrils

capillaries

polar cytoplasm

nuclei

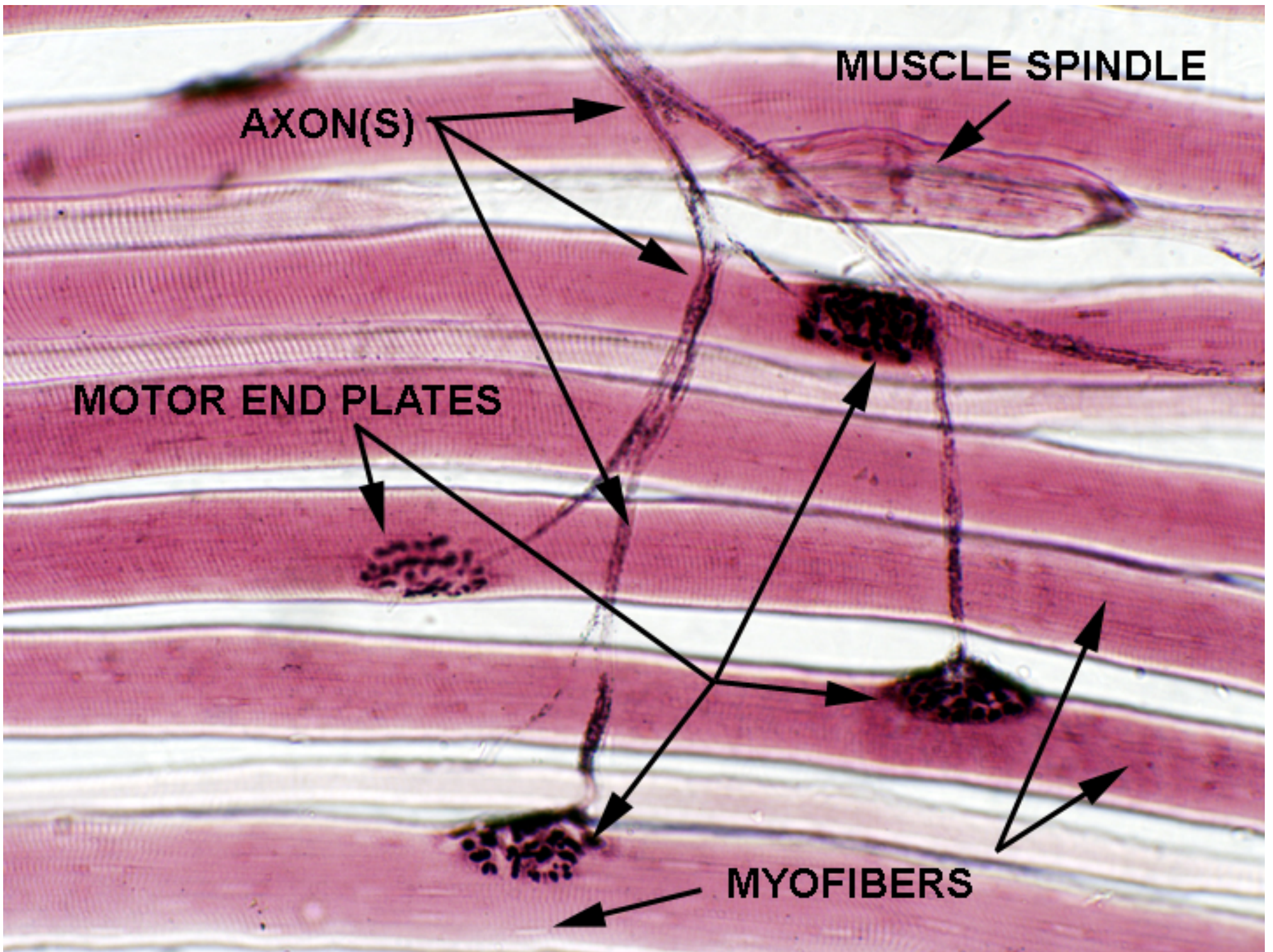
Jejunum H&E

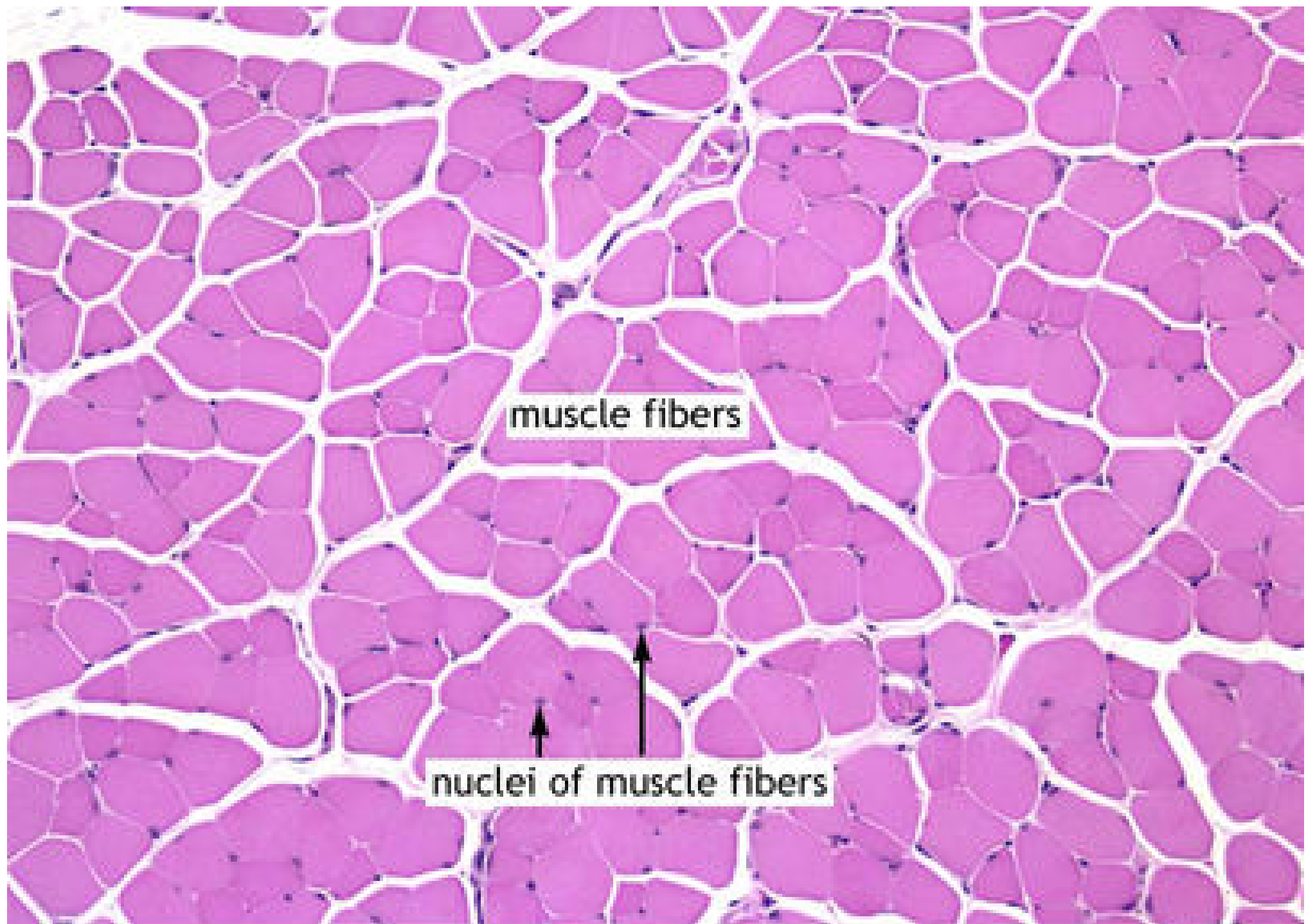
lumen

villi with simple columnar epithelium



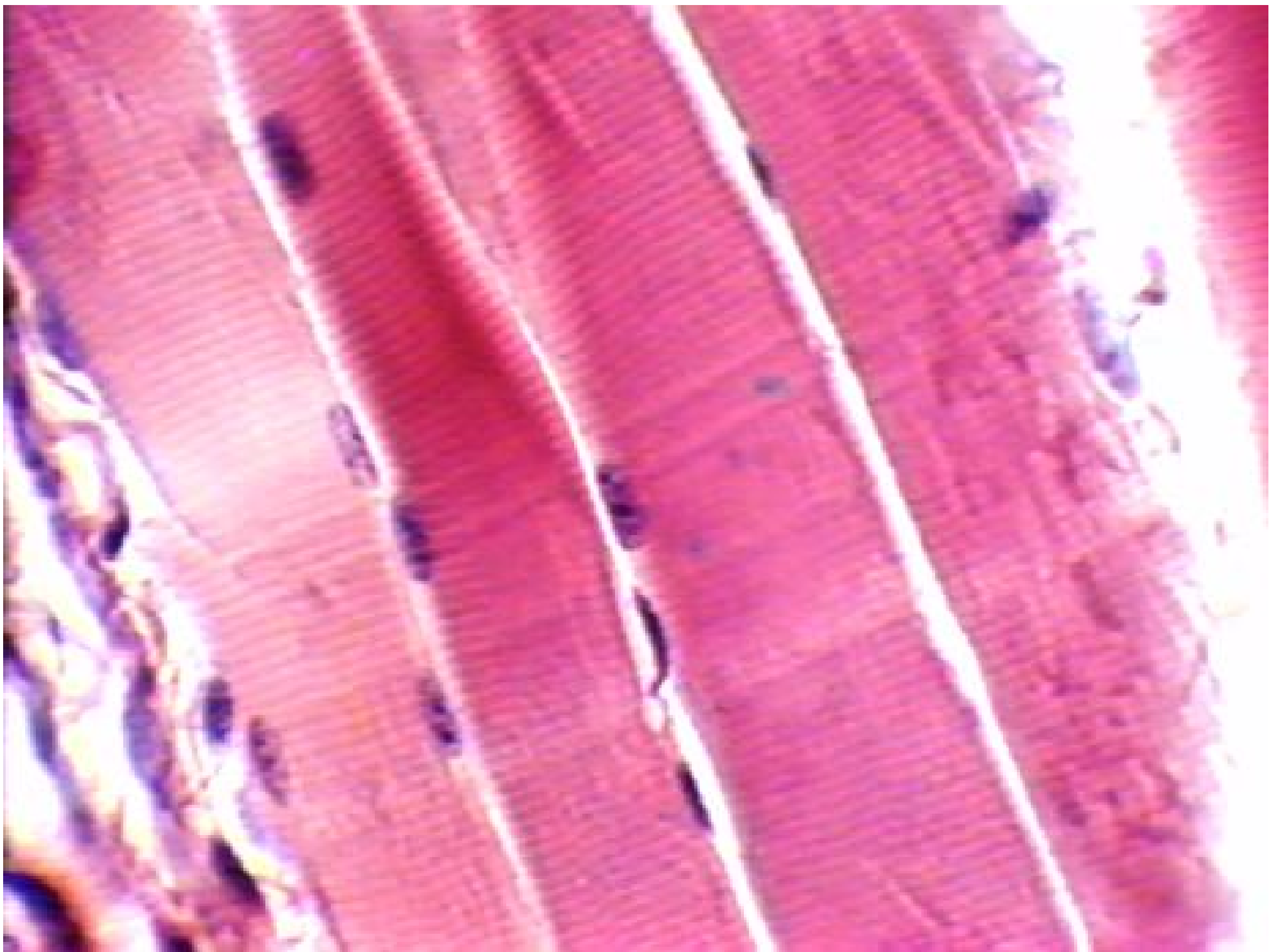
longitudinally and transversely cut smooth muscle cells

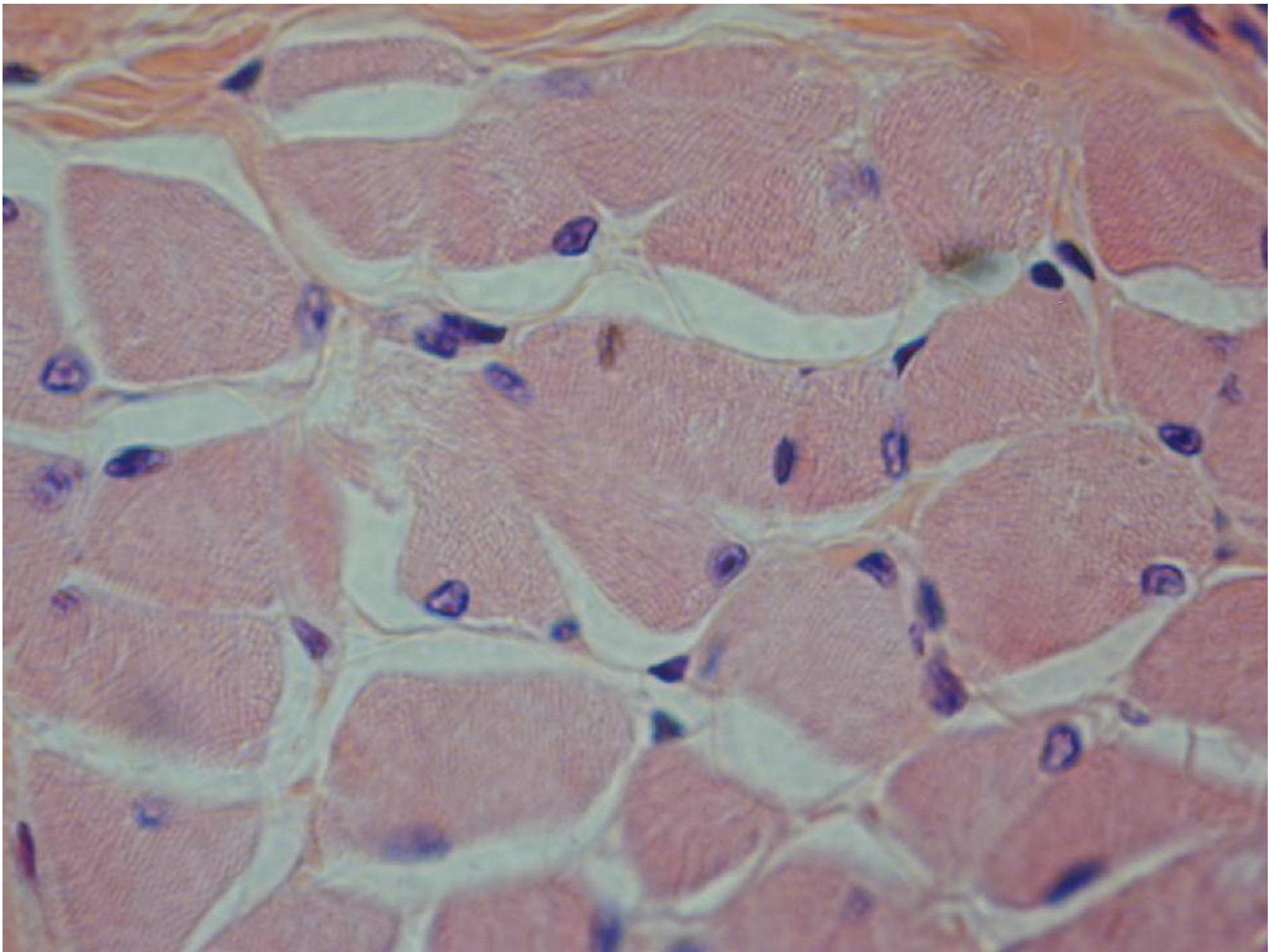


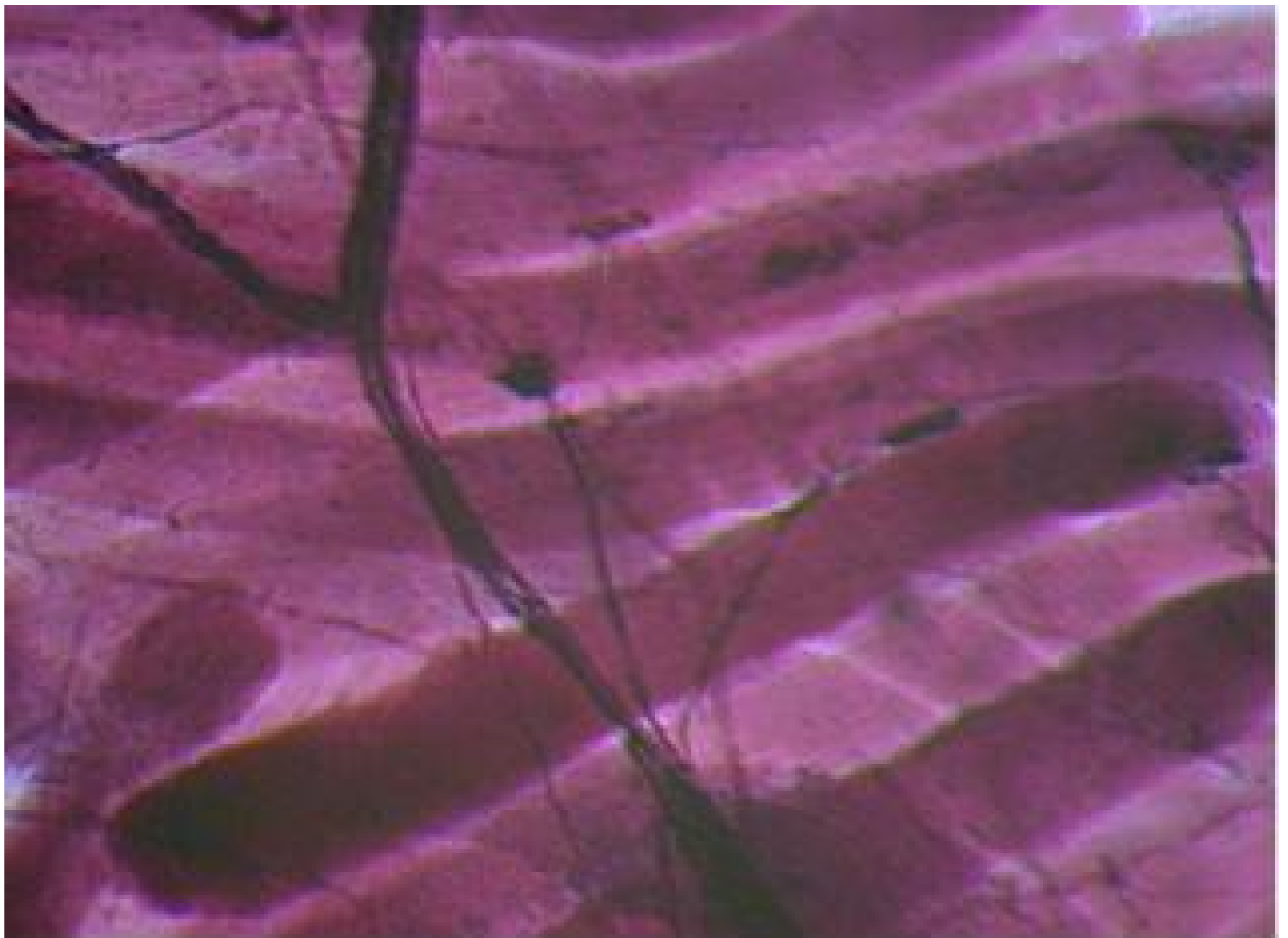


muscle fibers

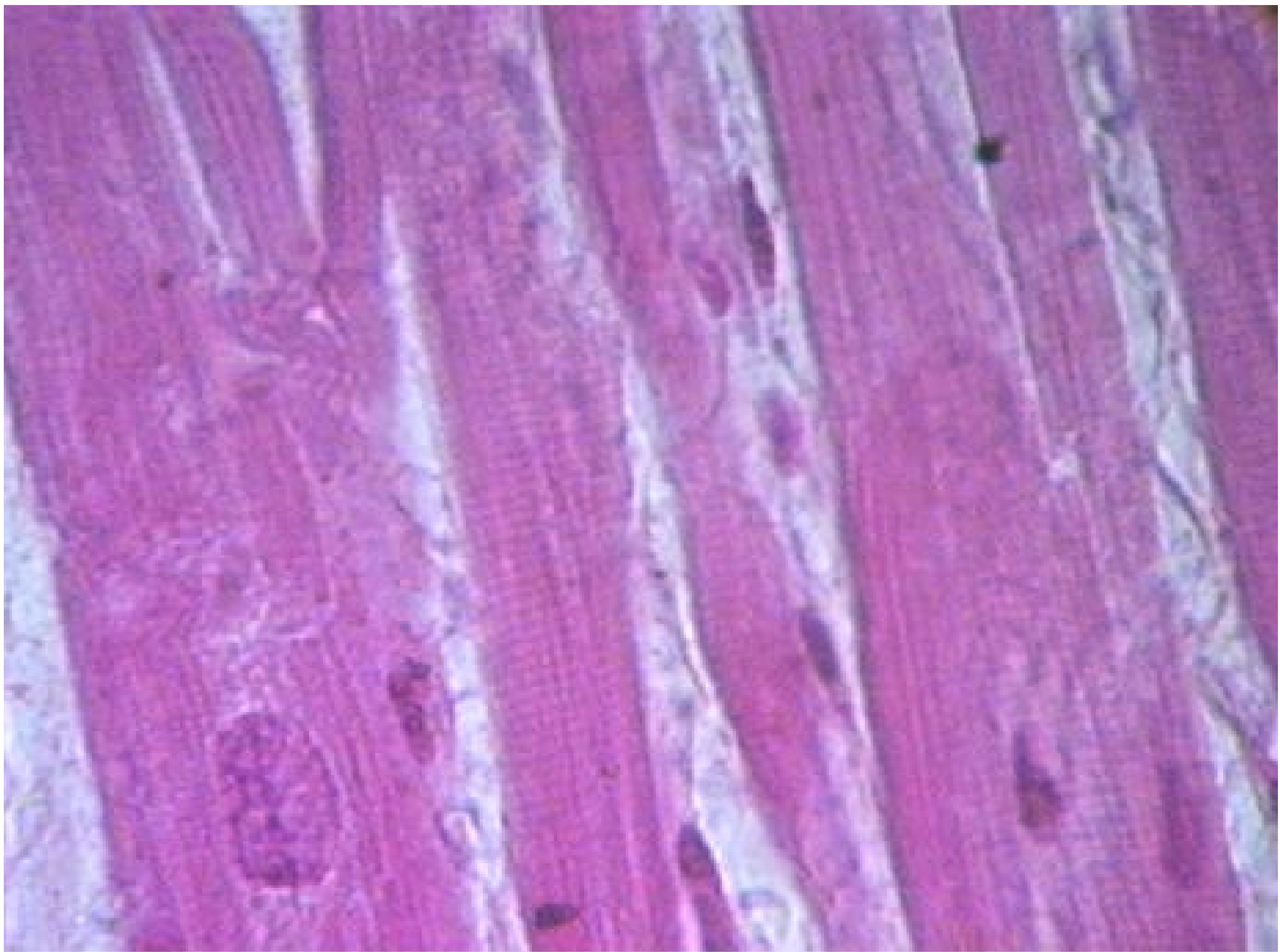
nuclei of muscle fibers









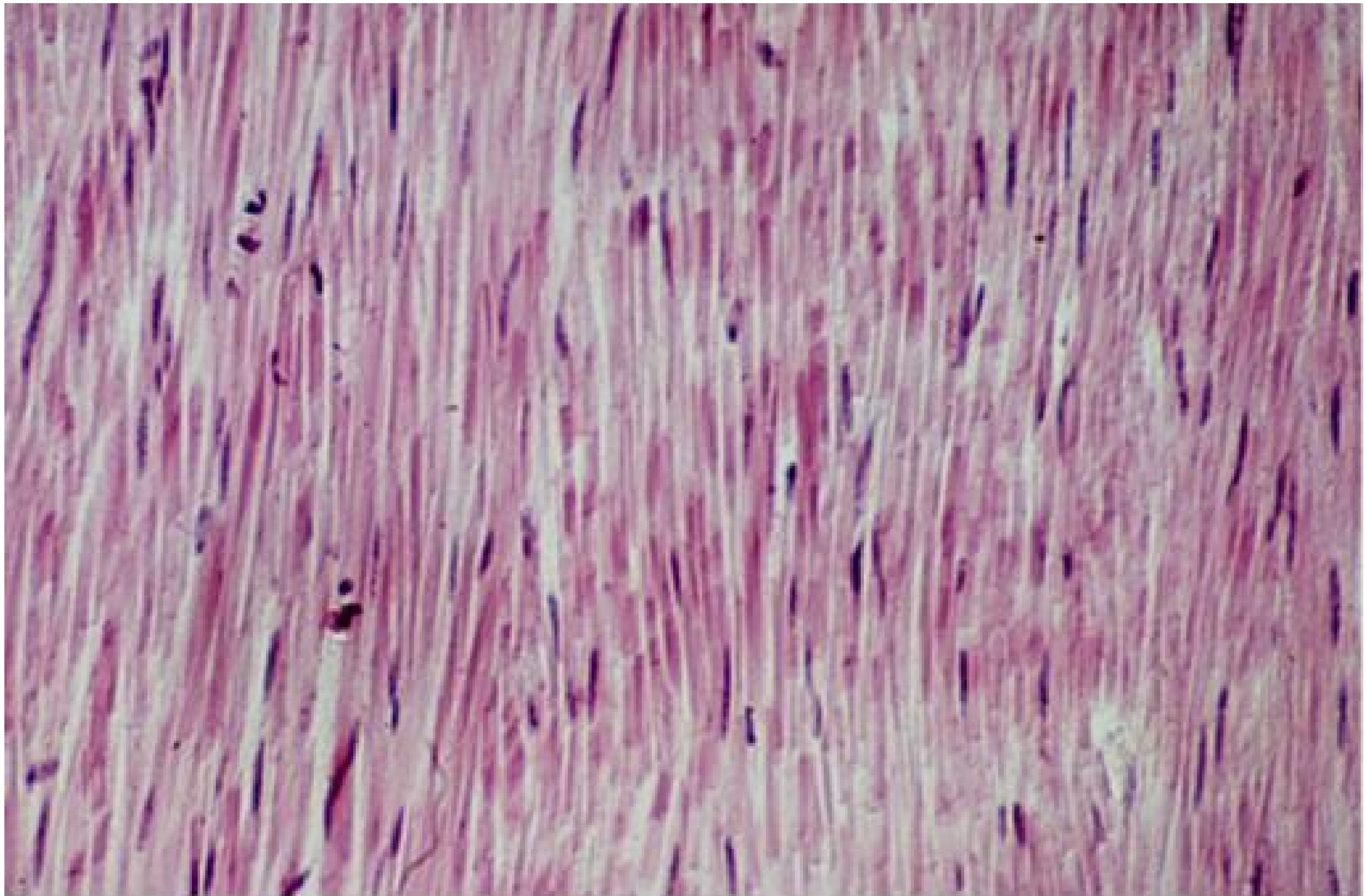


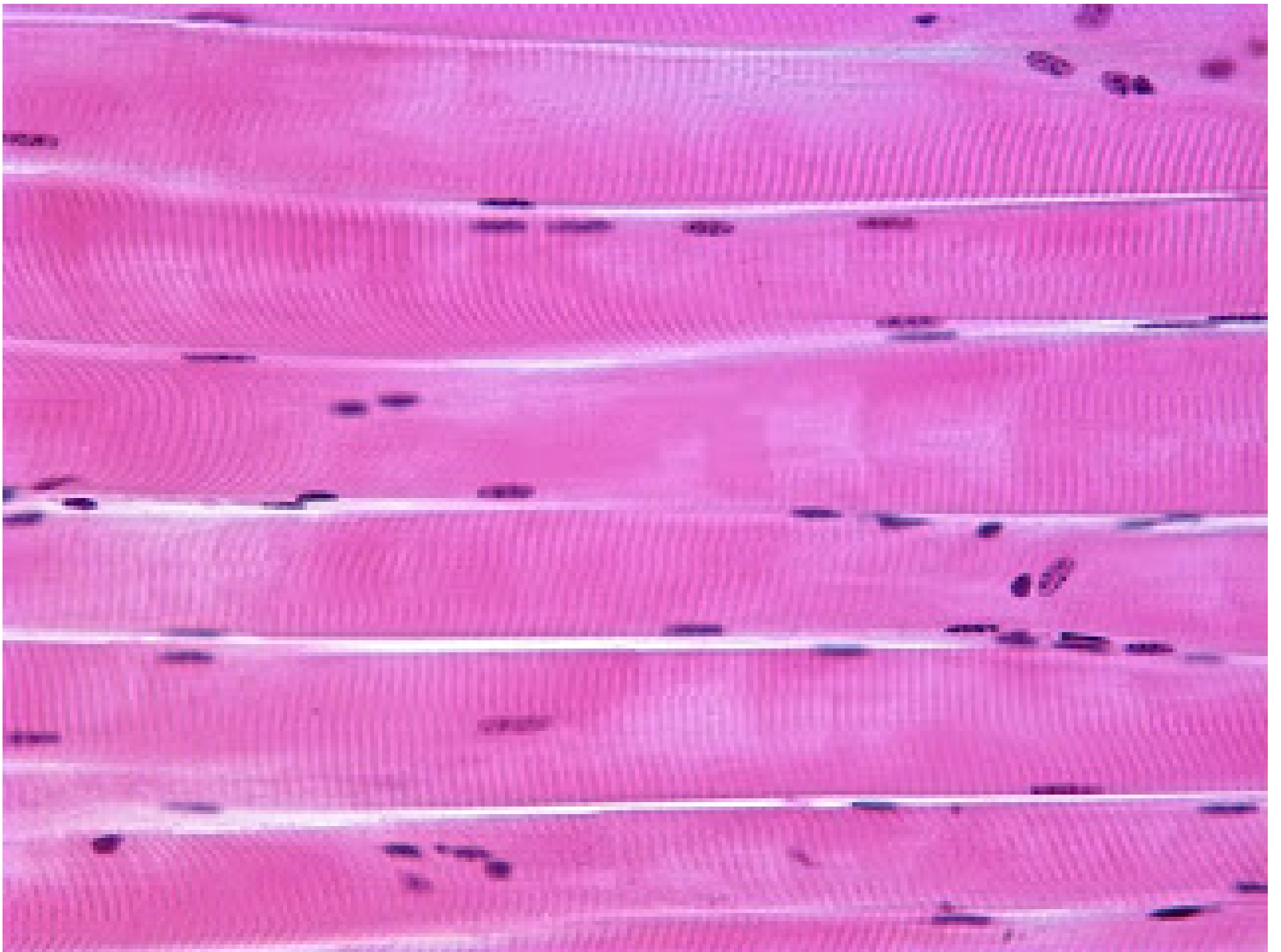


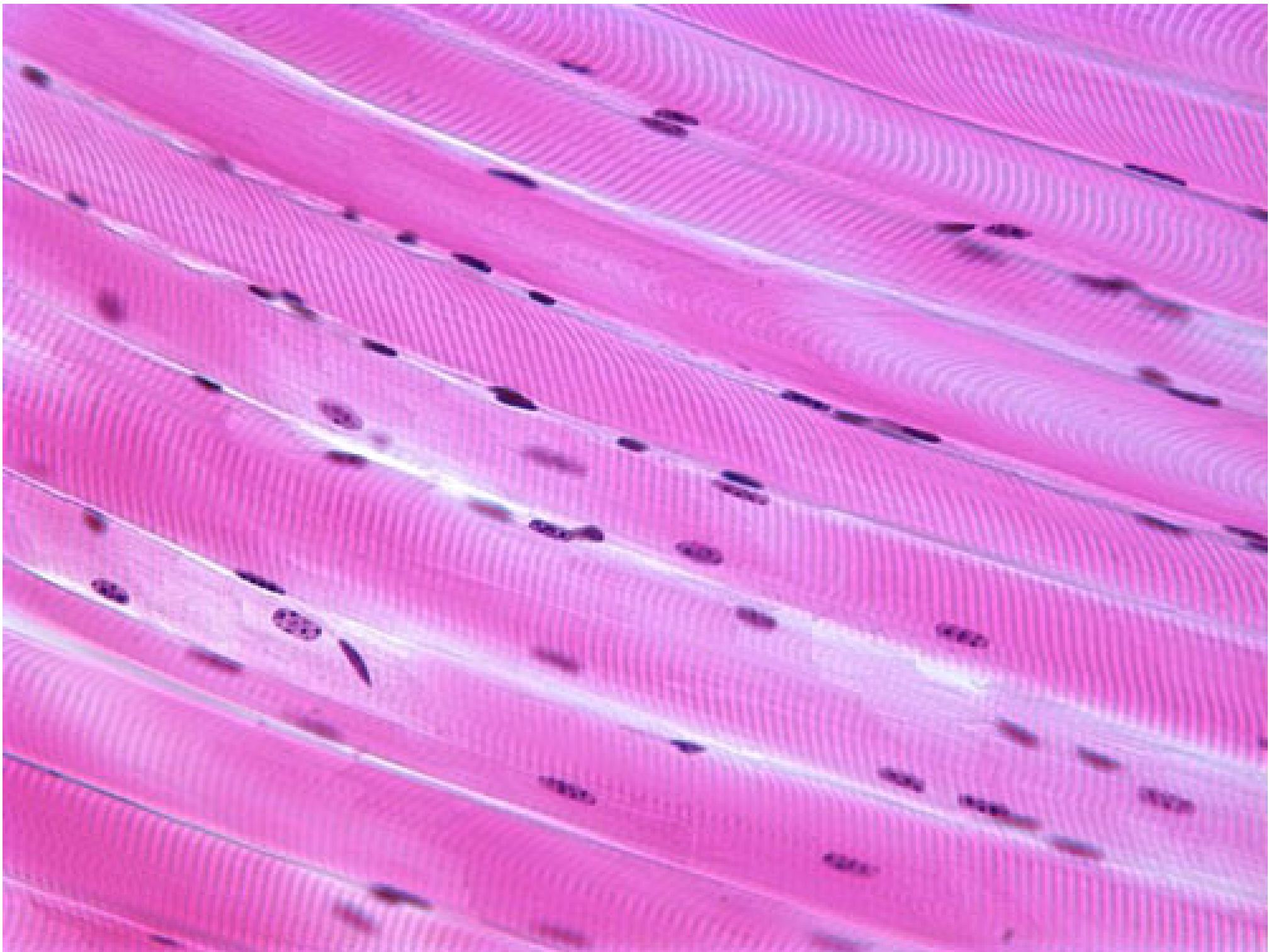
PURKINGE FIBERS

MODERATOR BAND









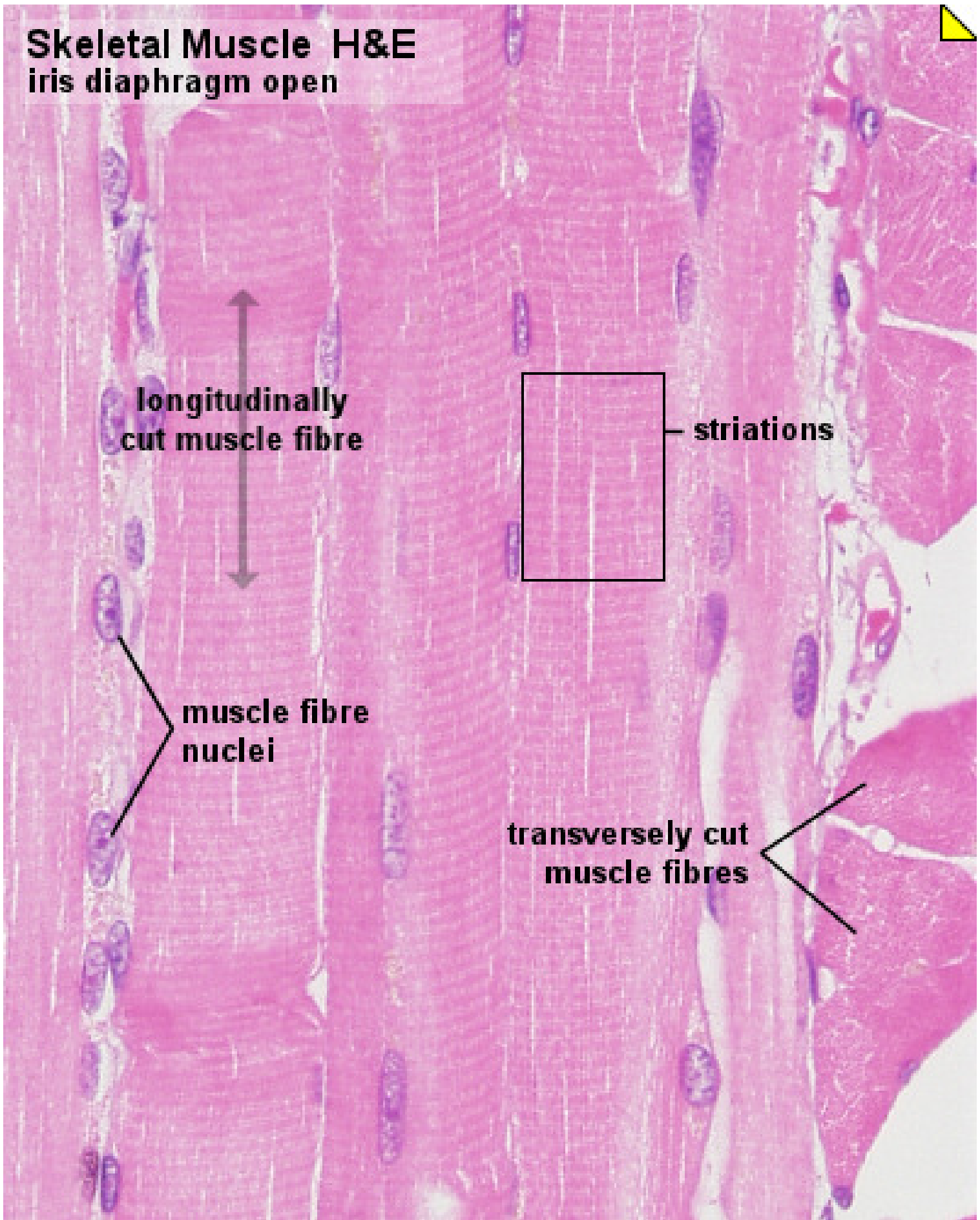
Skeletal Muscle H&E
iris diaphragm open

longitudinally
cut muscle fibre

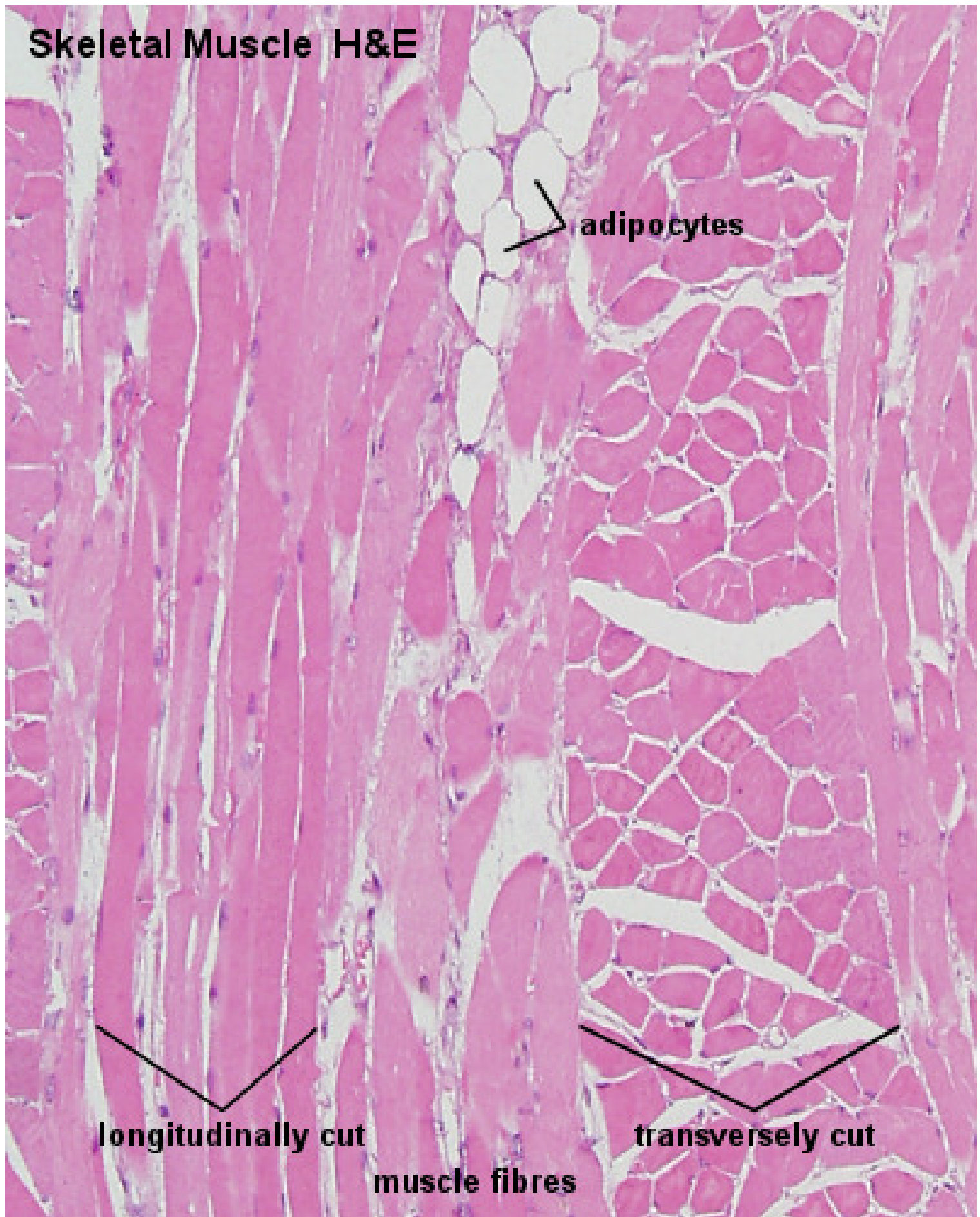
striations

muscle fibre
nuclei

transversely cut
muscle fibres



Skeletal Muscle H&E



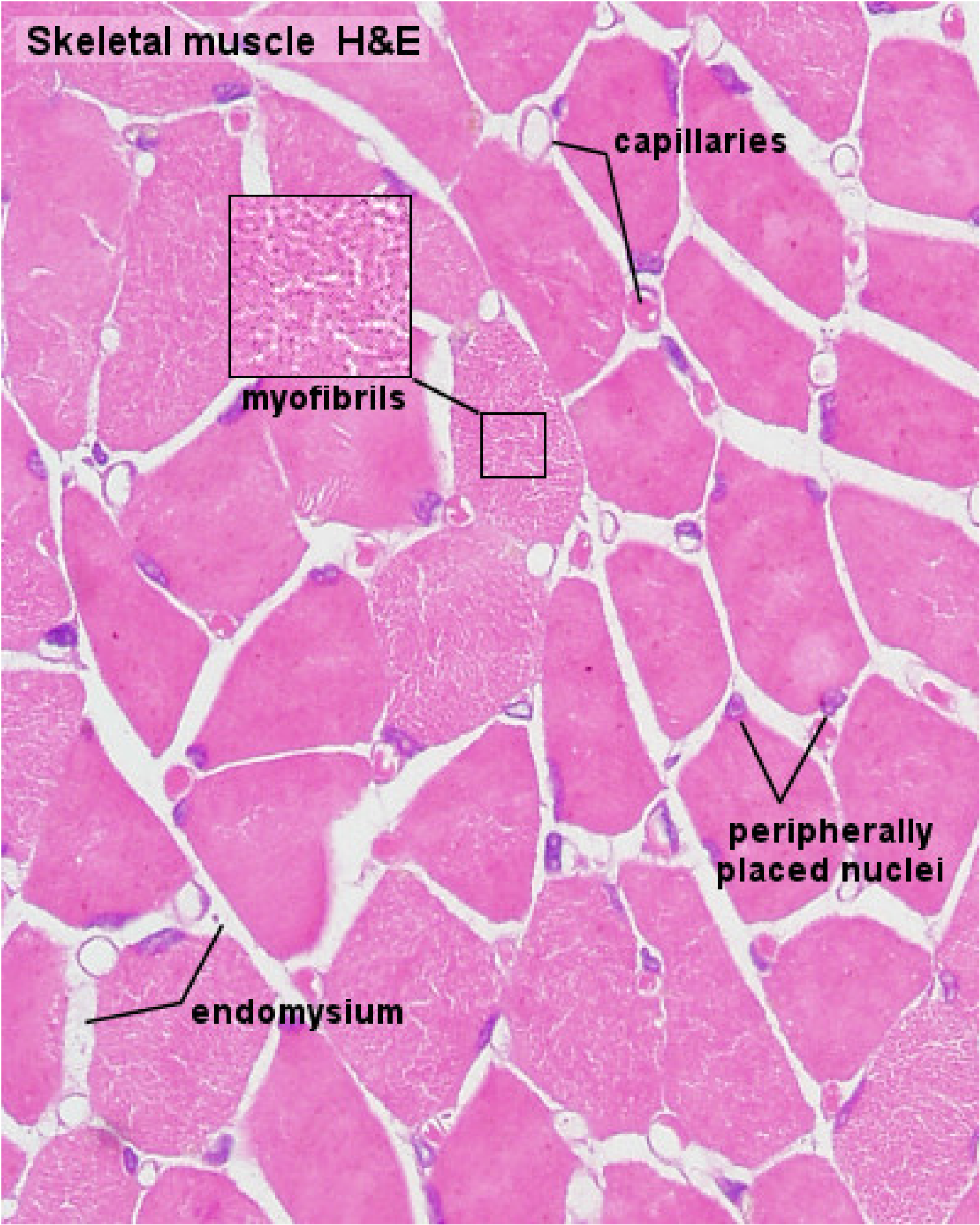
adipocytes

longitudinally cut

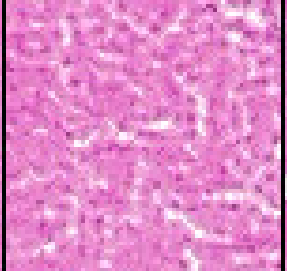
transversely cut

muscle fibres

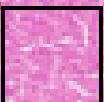
Skeletal muscle H&E



capillaries



myofibrils



peripherally placed nuclei

endomysium

